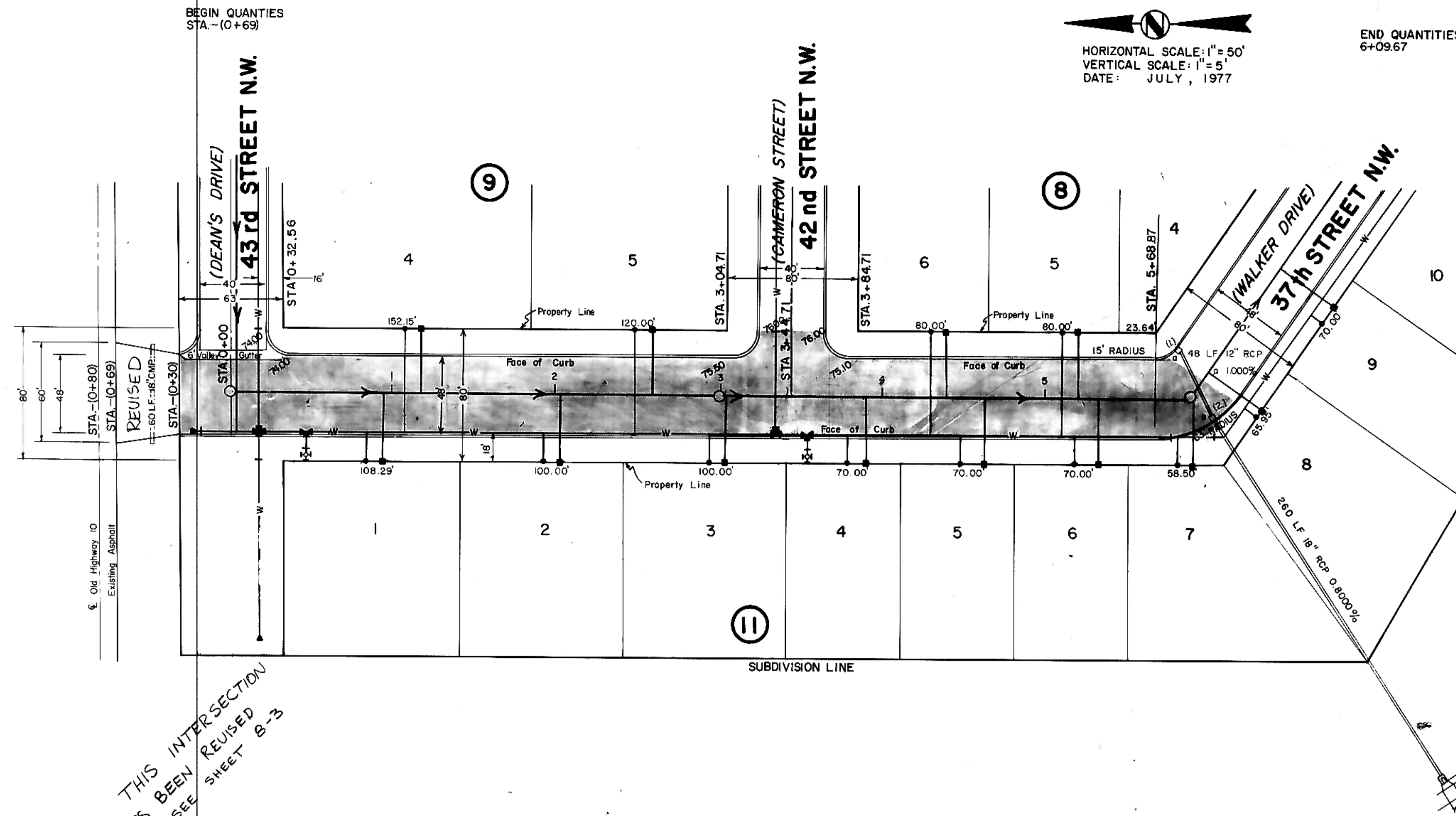


DATE	
BY	
REVISIONS	
NO.	
DATE	
BY	
REVISIONS	
NO.	
DATE	
BY	
REVISIONS	
NO.	

DATE	
BY	
REVISIONS	
NO.	
DATE	
BY	
REVISIONS	
NO.	
DATE	
BY	
REVISIONS	
NO.	



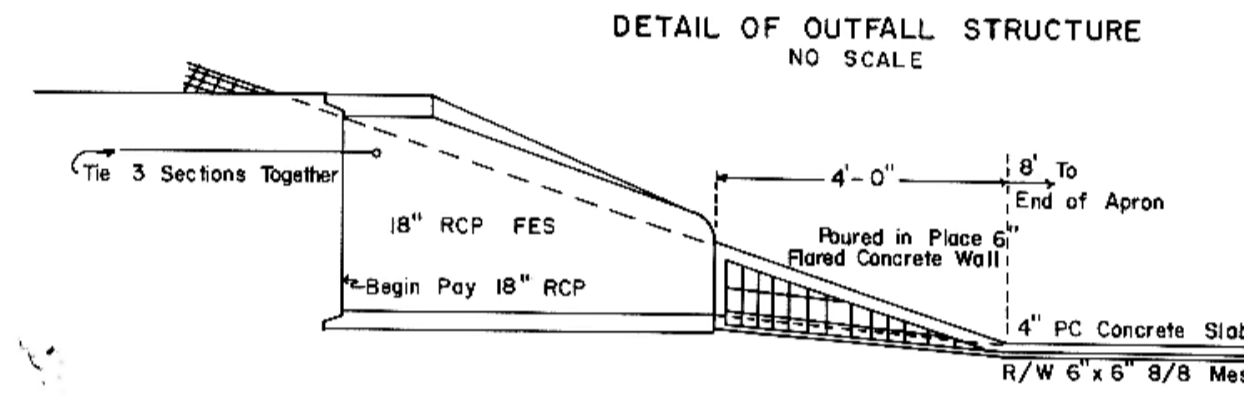
HORIZONTAL SCALE: 1"=50'
 VERTICAL SCALE: 1"=5'
 DATE: JULY, 1977

STORM SEWER INLETS		
INLET NO.	1	2
TYPE	A	B
CURB ELEV.	1963.57	1963.24
GUTTER ELEV.	1962.32	1962.59
TOP OF ROOF	1962.38	1962.05
INVERT (A)	1958.70	1958.22
INVERT (B)		1958.08
LENGTH FC. SEC.	3 - 8'	

STORM SEWER	
INLET LOCATION	
NO. 1	STA. 0+14.81 LT=2055 24 LT (Sheet 2-8)
NO. 2	STA. 0+36.29 RT

- NOTES:**
- Sewer and Water Improvements as shown on plans are existing as per date of street improvement plans. Existing Sewer and Water as per "Consolidated Water and Sewer Improvement District No. 24."
 - All curb and gutter radii are 15 feet at face of curb unless otherwise stated.
 - Proposed grades are to top of curb unless otherwise stated.
 - City Engineer shall confirm location of variable curb and gutter.
 - Embankment quantities shown include an assumed 25% shrinkage factor.
 - Stationing for inlets refer to face of curb and center of inlet.
 - Backfill shall be Class "B".
 - Engineer is to verify location of toe of slope and adjust pipe length accordingly.
 - Removal and replacement of topsoil in the 1-94 right-of-way shall be considered incidental to the other bid items. Contractor shall restore 1-94 right-of-way to its original condition or better as specified by North Dakota State Highway Department Standard Specifications.
 - Seeding in State Highway Right-of-Way shall be as specified in Section 890-Seed-North Dakota State Highway Standard Specifications.

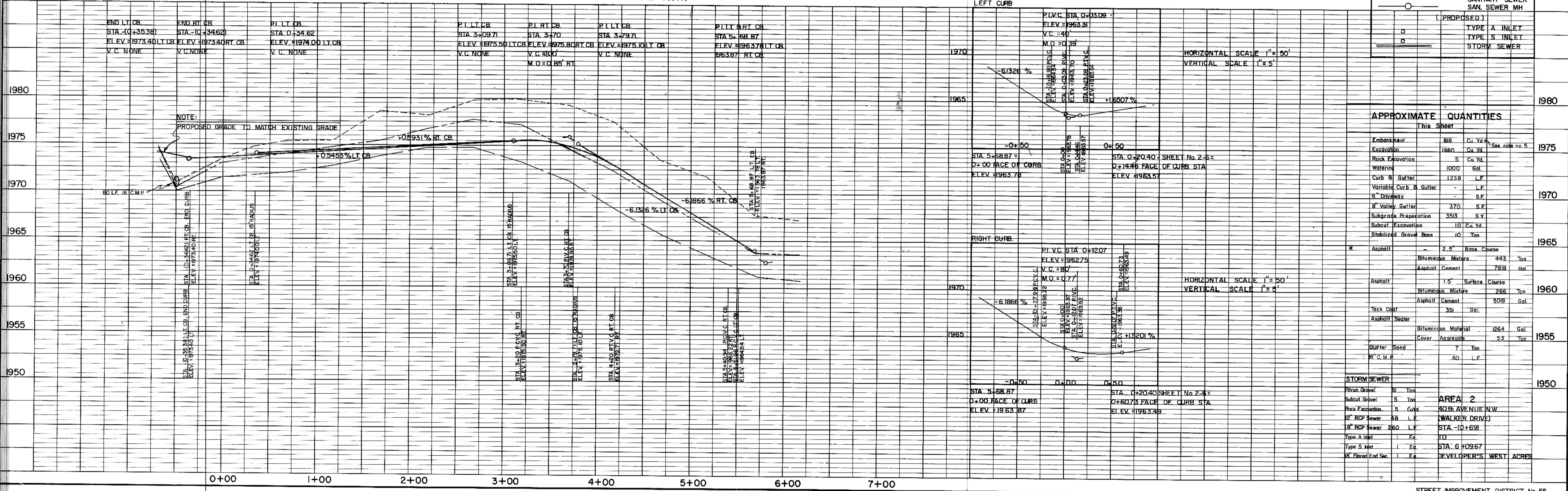
* The Revised Asphalt Quantities Were Computed With The Following Asphalt Mixture:
 Base Course: 144.8 Lb./Cu Ft. With 7% Asphalt Cement
 Surface Course: 144.6 Lb./Cu Ft. With 7 1/2% Asphalt Cement
 Asphalt Cement @ 60°F: 8.54 Lb./Gal.
 Tack Coat: 0.1 Gal./Sq Yd.
 Asphalt Sealer:
 Bituminous Material: 0.36 Gal./Sq. Yd.
 Cover Aggregate: 30 Lb./Sq. Yd.
 Blotter Sand: 4 Lb./Sq. Yd.



LEGEND	
---	(EXISTING) CENTERLINE
---	50' LT.
---	50' RT.
---	(EXISTING) WATERMAINS
---	HYDRANTS
---	GATE VALVES
---	TEES
---	PLUGS
---	SANITARY SEWER
---	SAN. SEWER MH
---	(PROPOSED) TYPE A INLET
---	TYPE S INLET
---	STORM SEWER

THIS INTERSECTION HAS BEEN REVISED SEE SHEET 8-3

(WALKER DRIVE) 40th AVENUE N.W.



APPROXIMATE QUANTITIES		
This Sheet		
Embankment	818	Cu. Yd.
Excavation	1860	Cu. Yd.
Rock Excavation	5	Cu. Yd.
Waterline	1000	Gal.
Curb & Gutter	1238	L.F.
Variable Curb & Gutter		L.F.
8" Driveway		S.F.
8" Valley Gutter	370	S.F.
Subgrade Preparation	3513	S.Y.
Subcut Excavation	10	Cu. Yd.
Stabilized Gravel Base	10	Ton.
Asphalt	2.5	Hose Course
Bituminous Mixture	443	Ton
Asphalt Cement	7818	gal.
Asphalt	1.5	Surface Course
Bituminous Mixture	266	Ton
Asphalt Cement	5099	Gal.
Tack Coat	391	Gal.
Asphalt Sealer		
Bituminous Material	1264	Gal.
Cover Aggregate	53	Ton
Blotter Sand	7	Ton
8" C.M.P.	60	L.F.

STORM SEWER	
From Driveway	81 Ton
Subcut Sewer	5 Ton
Rock Excavation	5 Cords
12" RCP Sewer	88 L.F.
8" RCP Sewer	280 L.F.
Type A Inlet	1 Ea.
Type S Inlet	1 Ea.
8" Driveway End Sec.	1 Ea.

AREA 2
 40th AVENUE N.W.
 (WALKER DRIVE)
 STA. (0+69)
 STA. 6+09.67
 DEVELOPER'S WEST ACRES