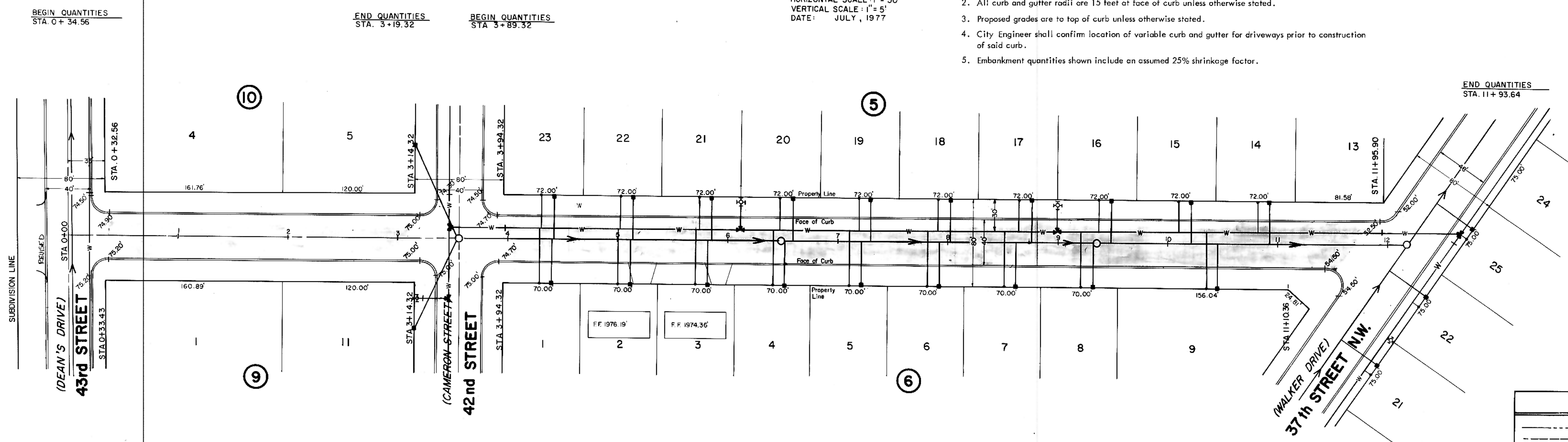


PLAN
 DRAWN BY: KOTTID
 CHECKED BY: [blank]
 DATE: [blank]

PROFILE
 DRAWN BY: [blank]
 CHECKED BY: [blank]
 DATE: [blank]

HORIZONTAL SCALE: 1" = 50'
 VERTICAL SCALE: 1" = 5'
 DATE: JULY, 1977

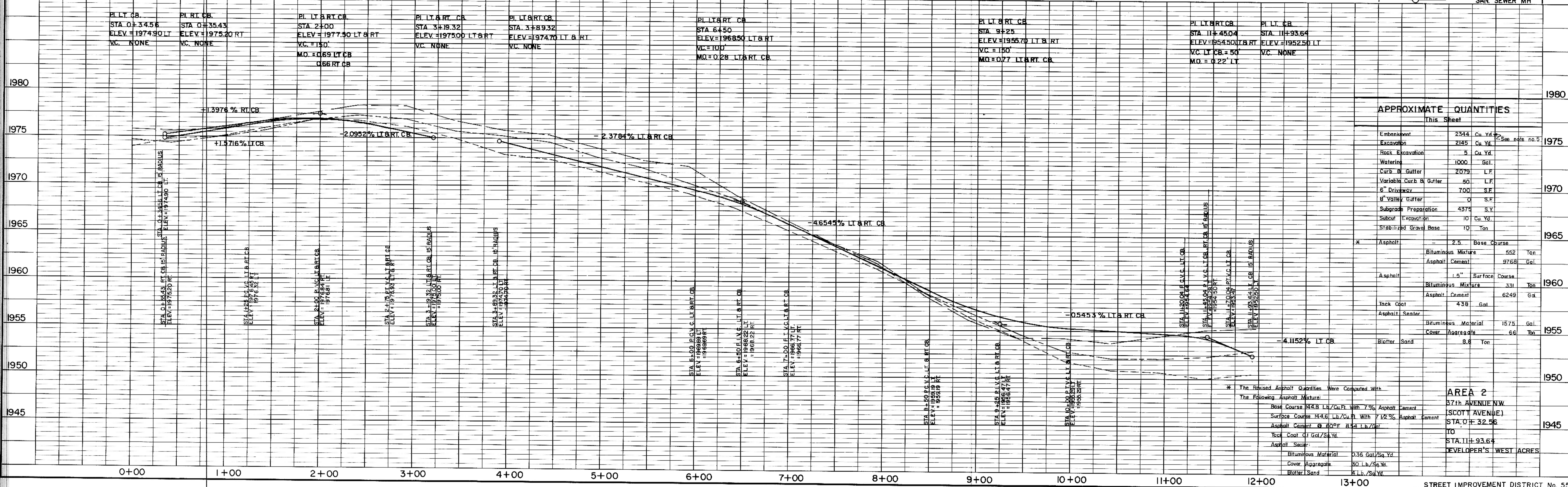
- NOTES:
- Sewer and Water Improvements as shown on plans are existing as per date of street improvement plans. Existing Sewer and Water as per "Consolidated Water and Sewer Improvement District No. 24".
 - All curb and gutter radii are 15 feet at face of curb unless otherwise stated.
 - Proposed grades are to top of curb unless otherwise stated.
 - City Engineer shall confirm location of variable curb and gutter for driveways prior to construction of said curb.
 - Embankment quantities shown include an assumed 25% shrinkage factor.



LEGEND

(---)	(EXISTING) CENTERLINE
(---)	50' LT
(---)	50' RT
(---)	(EXISTING) WATERMAINS
(---)	HYDRANTS
(---)	GATE VALVES
(---)	TEES
(---)	PLUGS
(---)	SANITARY SEWER
(---)	SAN SEWER MH

(SCOTT AVENUE) 37th AVENUE N.W.



APPROXIMATE QUANTITIES

Item	Quantity	Unit
Embankment	2544	Cu. Yd.
Excavation	2145	Cu. Yd.
Rock Excavation	5	Cu. Yd.
Waterline	1000	Gal.
Curb & Gutter	2079	L.F.
Variable Curb & Gutter	50	L.F.
6" Driveway	700	S.F.
8" Valley Gutter	0	S.F.
Subgrade Preparation	4374	S.Y.
Subcut Excavation	10	Cu. Yd.
Stabilized Gravel Base	10	Ton
Asphalt	2.5	Base Course
Bituminous Mixture	552	Ton
Asphalt Cement	9768	Gal.
Asphalt	1.5	Surface Course
Bituminous Mixture	331	Ton
Asphalt Cement	6249	Gal.
Jack Coat	438	Gal.
Asphalt Sealer		
Bituminous Material	1575	Gal.
Cover Aggregate	66	Ton
Blotter Sand	8.8	Ton

* The Revised Asphalt Quantities Were Computed With The Following Asphalt Mixture:
 Base Course 14.8 Lb./Cu. Ft. With 7% Asphalt Cement
 Surface Course 14.6 Lb./Cu. Ft. With 7.2% Asphalt Cement
 Asphalt Cement @ 80°F 8.4 Lb./Sq. Ft.
 Top Coat 0.1 Gal./Sq. Yd.
 Asphalt Sealer:
 Bituminous Material 0.36 Gal./Sq. Yd.
 Cover Aggregate 30 Lb./Sq. Yd.
 Blotter Sand 1 Lb./Sq. Yd.

PLATE 1, PLAN-PROFILE
 KEUFEL & ESSER CO.
 48 7024 MADE IN U.S.A.

STREET IMPROVEMENT DISTRICT No. 55
 MANDAN, NORTH DAKOTA

DATE REVISED - February, 1978
 SHEET No. 2-12