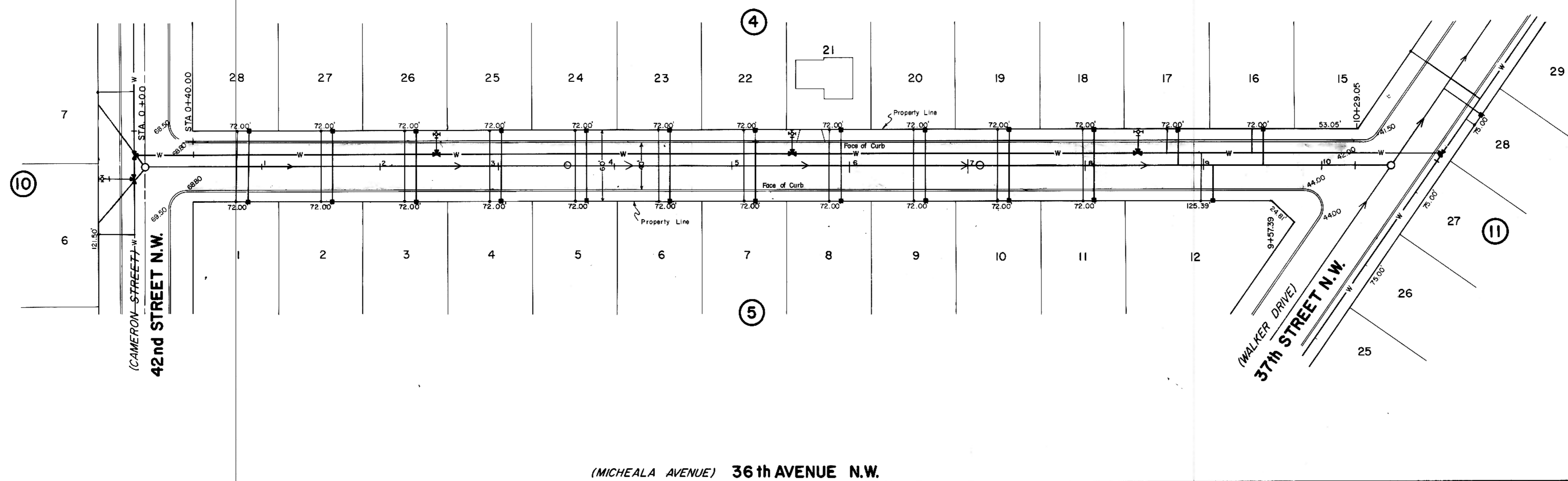


HORIZONTAL SCALE: 1" = 50'  
 VERTICAL SCALE: 1" = 5'  
 DATE: JULY, 1977

BEGIN QUANTITIES  
 STA 0+35

END QUANTITIES  
 STA 10+33.75

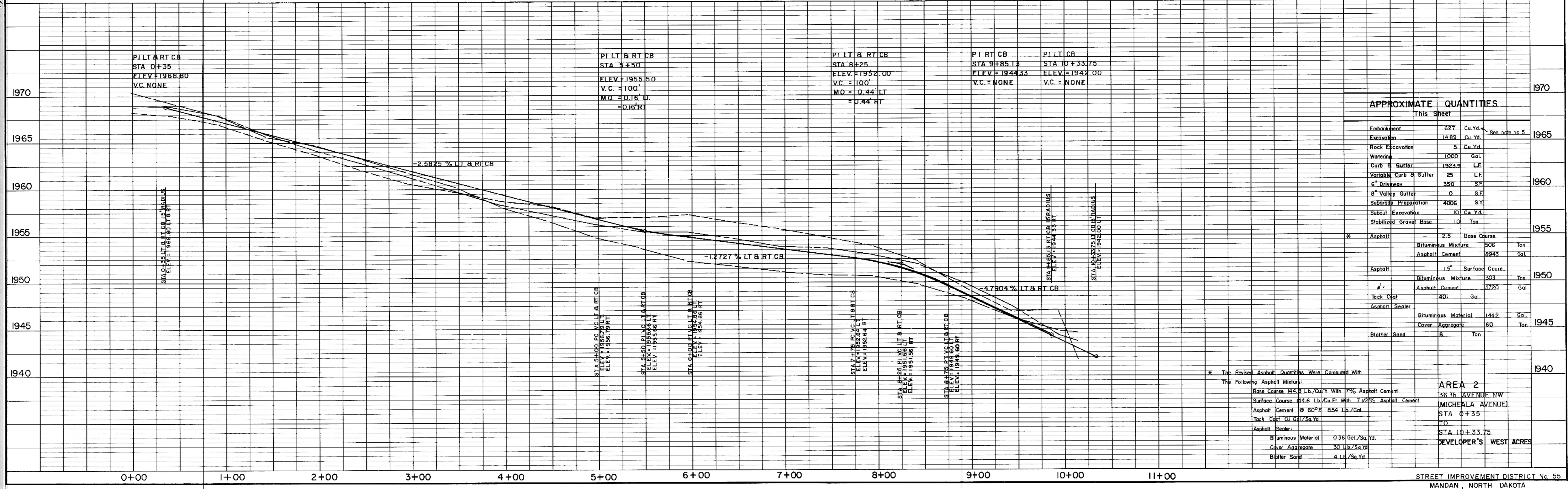


- NOTES:**
1. Sewer and Water Improvements as shown on plans are existing as per date of street improvement plans. Existing Sewer and Water as per "Consolidated Water and Sewer Improvement District No. 24".
  2. All curb and gutter radii are 15 feet at face of curb unless otherwise stated.
  3. Proposed grades are to top of curb unless otherwise stated.
  4. City Engineer shall confirm location of variable curb and gutter for driveways prior to construction of said curb.
  5. Embankment quantities shown include an assumed 25% shrinkage factor.

**LEGEND**

---	EXISTING CENTERLINE
---	50' LT.
---	50' RT.
---	(EXISTING)
W	WATERMAINS
H	HYDRANTS
G	GATE VALVES
T	TEES
P	PLUGS
S	SANITARY SEWER
M	SAN. SEWER MH

(MICHEALA AVENUE) 36th AVENUE N.W.



**APPROXIMATE QUANTITIES**  
 This Sheet

Embankment	627	Cu. Yd.	
Excavation	1489	Cu. Yd.	See note no. 5
Rock Excavation	5	Cu. Yd.	
Watering	1000	Gal.	
Curb & Gutter	1923.9	LF	
Variable Curb & Gutter	25	LF	
6" Driveway	350	SF	
8" Valley Gutter	0	SF	
Subgrade Preparation	4006	S.Y.	
Subcut Excavation	0	Cu. Yd.	
Stabilized Gravel Base	10	Ton	
Asphalt	2.5	Base Course	
Bituminous Mixture	505	Ton	
Asphalt Cement	8943	Gal.	
Asphalt	1.5	Surface Course	
Bituminous Mixture	303	Ton	
Asphalt Cement	5720	Gal.	
Tack Coat	401	Gal.	
Asphalt Sealer			
Bituminous Material	1442	Gal.	
Cover Aggregate	60	Ton	
Blotter Sand	8	Ton	

\* The Revised Asphalt Quantities Were Computed With The Following Asphalt Mixture:  
 Base Course M4.8 Lb./Cu.Ft. With 7% Asphalt Cement  
 Surface Course M4.6 Lb./Cu.Ft. With 7.12% Asphalt Cement  
 Asphalt Cement @ 60°F 8.54 Lb./Gal.  
 Tack Coat @ 60°F 7.50 Lb./Sq.Yd.  
 Asphalt Sealer:  
 Bituminous Material 0.36 Gal./Sq.Yd.  
 Cover Aggregate 30 Lb./Sq.Yd.  
 Blotter Sand 4 Lb./Sq.Yd.

**AREA 2**  
 36th AVENUE NW  
 (MICHEALA AVENUE)  
 STA 0+35  
 STA 10+33.75  
 DEVELOPER'S WEST ACRES

**PLAN**  
 NO. 1  
 DATE: \_\_\_\_\_  
 BY: \_\_\_\_\_  
 CHECKED: \_\_\_\_\_  
 APPROVED: \_\_\_\_\_

**PROFILE**  
 NO. 1  
 DATE: \_\_\_\_\_  
 BY: \_\_\_\_\_  
 CHECKED: \_\_\_\_\_  
 APPROVED: \_\_\_\_\_