

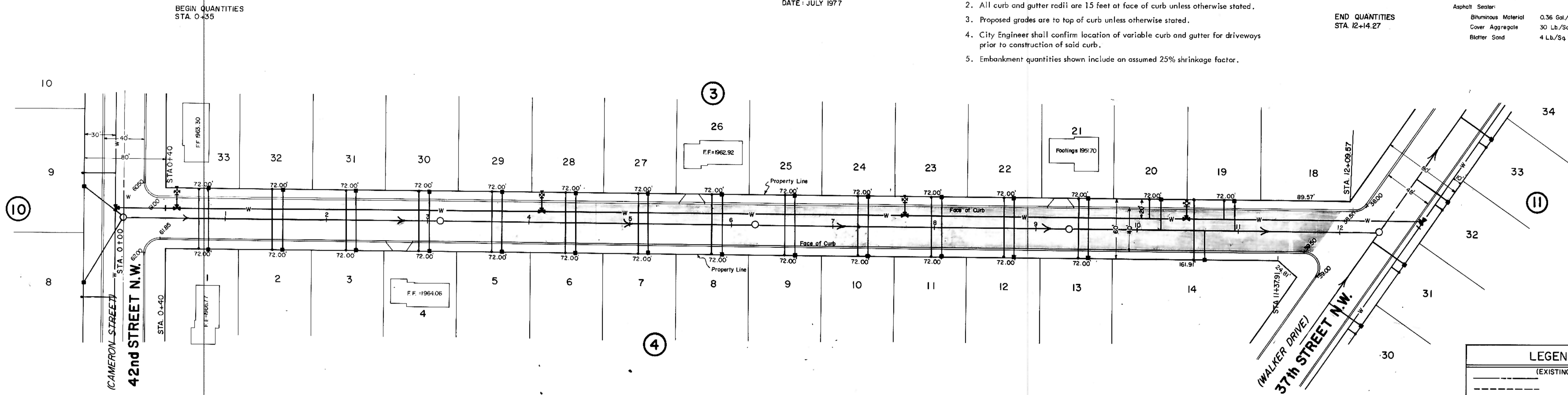
PLAN
 SURVEYED, PLOTTED, ALIGNED, CHECKED, REVISIONS
 NOTE BOOK No. _____

PROFILE
 SURVEYED, PLOTTED, ALIGNED, CHECKED, REVISIONS
 NOTE BOOK No. _____

HORIZONTAL SCALE: 1" = 50'
 VERTICAL SCALE: 1" = 5'
 DATE: JULY 1977

- NOTES:
- Sewer and Water Improvements as shown on plans are existing as per date of street improvement plans. Existing Sewer and Water as per "Consolidated Water and Sewer Improvement District No. 24".
 - All curb and gutter radii are 15 feet at face of curb unless otherwise stated.
 - Proposed grades are to top of curb unless otherwise stated.
 - City Engineer shall confirm location of variable curb and gutter for driveways prior to construction of said curb.
 - Embankment quantities shown include an assumed 25% shrinkage factor.

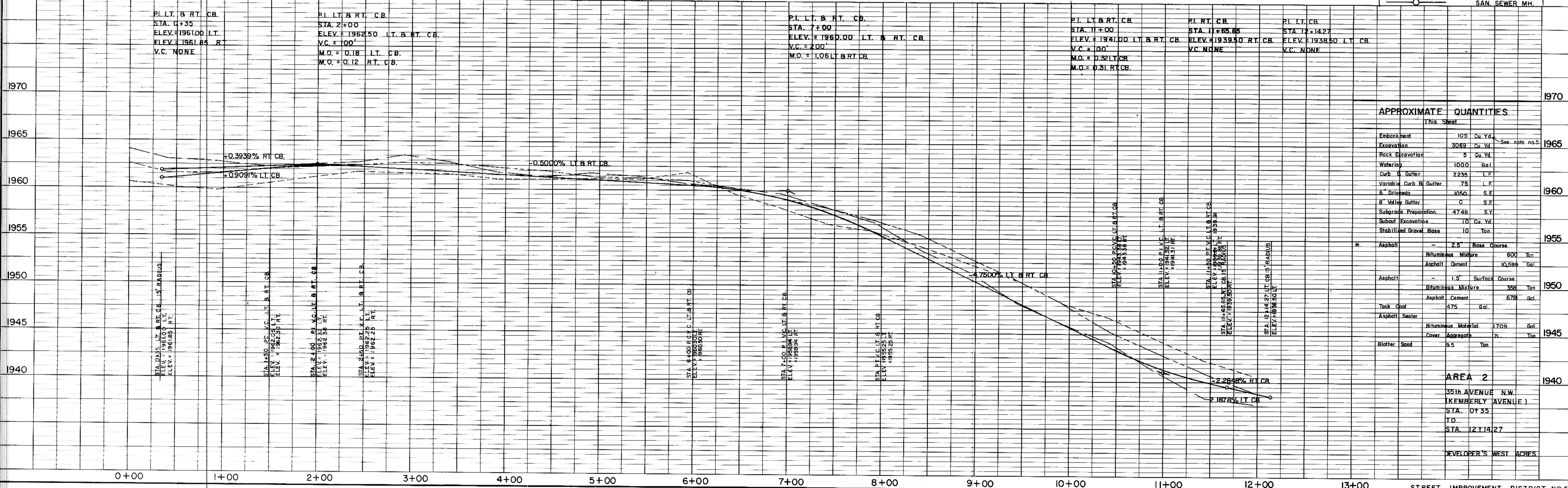
* The Revised Asphalt Quantities Were Computed With The Following Asphalt Mixture:
 Base Course 144.8 Lb./Cu.Ft. With 7% Asphalt Cement
 Surface Course 144.6 Lb./Cu.Ft. With 7 1/2% Asphalt Cement
 Asphalt Cement @ 60°F 8.54 Lb./Gal.
 Tack Coat 0.1 Gal./Sq.Yd.
 Asphalt Sealer:
 Bituminous Material 0.36 Gal./Sq.Yd.
 Cover Aggregate 30 Lb./Sq.Yd.
 Blotter Sand 4 Lb./Sq.Yd.



(KEMBERLY AVENUE) 35th AVENUE N.W.

LEGEND

(EXISTING)	CENTERLINE
(EXISTING)	50' LT.
(EXISTING)	50' RT.
(EXISTING)	WATERMAINS
(EXISTING)	HYDRANTS
(EXISTING)	GATE VALVES
(EXISTING)	TEES
(EXISTING)	PLUGS
(EXISTING)	SANITARY SEWER
(EXISTING)	SAN. SEWER MH.



APPROXIMATE QUANTITIES

Item	Quantity
Embankment	105 Cu. Yd.
Excavation	3069 Cu. Yd.
Rock Excavation	5 Cu. Yd.
Watering	1000 Gal.
Curb & Gutter	2235 L.F.
Variable Curb & Gutter	75 L.F.
8" Driveway	1050 S.F.
8" Valley Gutter	0 S.F.
Subgrade Preparation	4748 S.Y.
Subsoil Excavation	10 Cu. Yd.
Stabilized Gravel Base	10 Ton.
Asphalt	2.5" Base Course
Bituminous Mixture	600 Ton.
Asphalt Cement	10,599 Gal.
Asphalt	1.5" Surface Course
Bituminous Mixture	308 Ton.
Asphalt Cement	678 Gal.
Tack Coat	475 Gal.
Asphalt Sealer	
Bituminous Material	1709 Gal.
Cover Aggregate	71 Ton.
Blotter Sand	9.5 Ton.

AREA 2
 35th AVENUE N.W.
 (KEMBERLY AVENUE)
 STA. 0+35
 TO
 STA. 12+14.27
 DEVELOPER'S WEST ACRES