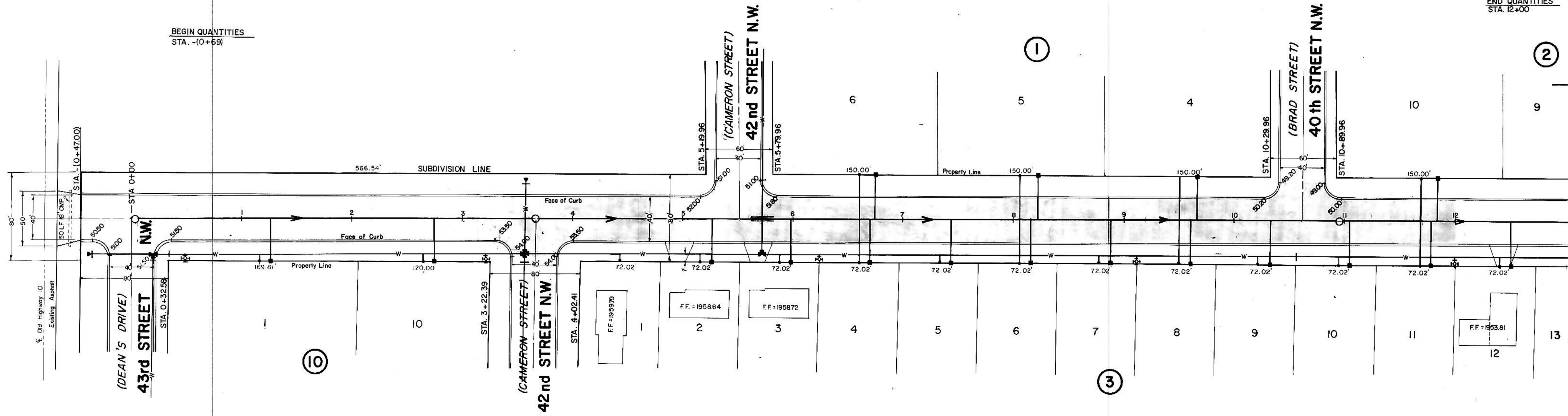


HORIZONTAL SCALE: 1" = 50'  
 VERTICAL SCALE: 1" = 5'  
 DATE: JULY, 1977

BEGIN QUANTITIES  
 STA. -(0+69)

END QUANTITIES  
 STA. 12+00



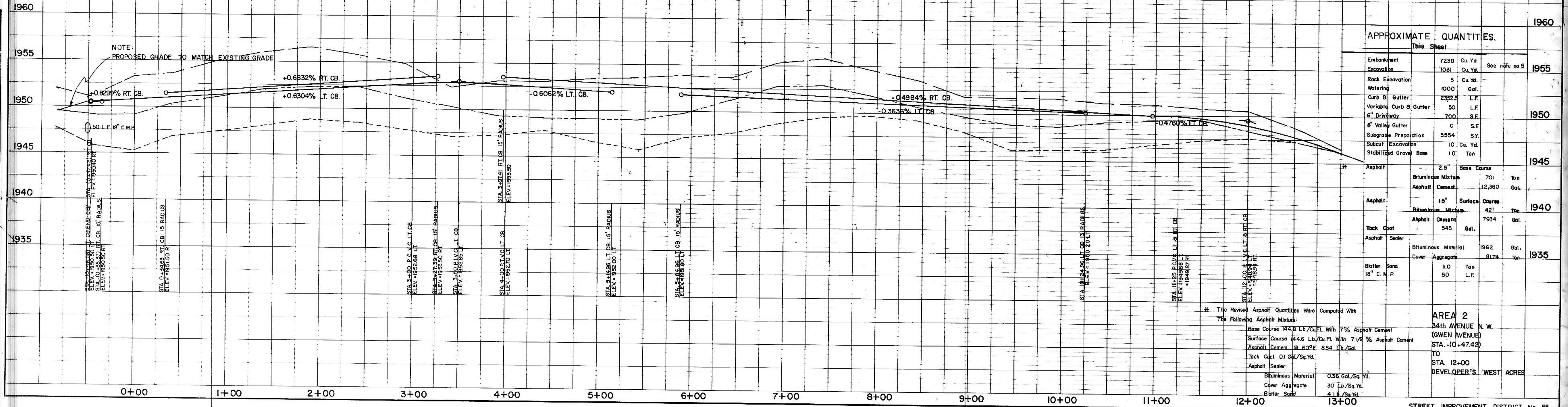
- NOTES:
- Sewer and Water Improvements as shown on plans are existing as per date of street improvement plans. Existing Sewer and Water as per "Consolidated Water and Sewer Improvement District No. 24".
  - All curb and gutter radii are 15 feet at face of curb unless otherwise stated.
  - Proposed grades are to top of curb unless otherwise stated.
  - City Engineer shall confirm location of variable curb and gutter for driveways prior to construction of said curb.
  - Embankment quantities shown include on assumed 25% shrinkage factor.

LEGEND

(EXISTING)	CENTERLINE
(EXISTING)	50' LT.
(EXISTING)	50' RT.
(EXISTING)	WATERMAINS
(EXISTING)	HYDRANTS
(EXISTING)	GATE VALVES
(EXISTING)	TEES
(EXISTING)	PLUGS
(EXISTING)	SANITARY SEWER
(EXISTING)	SAN. SEWER MH

(GWEN AVENUE) 34th AVENUE N.W.

P.I. RT. CB. STA. -(0+47.42) ELEV. = 1950.40 RT. CB. ELEV. = 1950.50 LT. CB. ELEV. = 1951.50 RT. CB. V.C. NONE	P.I. LT. CB. STA. -(0+46.58) ELEV. = 1950.50 LT. CB. ELEV. = 1951.50 RT. CB. V.C. NONE	P.I. RT. CB. STA. -(0+35.37) ELEV. = 1951.50 RT. CB. V.C. NONE	P.I. RT. CB. STA. 0+34.63 ELEV. = 1951.50 RT. CB. V.C. NONE	P.I. RT. CB. STA. 3+27.39 ELEV. = 1953.50 RT. CB. ELEV. = 1953.00 LT. CB. V.C. NONE M.O. = 0.15 LT. CB.	P.I. LT. CB. STA. 3+50 ELEV. = 1953.00 LT. CB. V.C. NONE M.O. = 0.15 LT. CB.	P.I. RT. CB. STA. 3+97.41 ELEV. = 1953.50 RT. CB. ELEV. = 1952.00 LT. CB. V.C. NONE	P.I. LT. CB. STA. 5+14.96 ELEV. = 1952.00 LT. CB. ELEV. = 1951.80 LT. V.C. NONE	P.I. LT. CB. STA. 10+24.96 ELEV. = 1950.20 LT. CB. ELEV. = 1950.00 LT. CB. V.C. NONE	P.I. LT. CB. STA. 10+34.96 ELEV. = 1950.00 LT. CB. V.C. NONE	P.I. LT. & RT. CB. STA. 12+00 ELEV. = 1949.50 LT. & RT. CB. V.C. = 150' M.O. = 0.56 LT. & RT. CB.
---	---	---	--	---	--	--	--	---	---	---



APPROXIMATE QUANTITIES.

Item	Quantity	Unit	Year
Embankment	7250	Cu. Yd.	1955
Excavation	1031	Cu. Yd.	1955
Rock Excavation	5	Cu. Yd.	1955
Watering	1000	Gal.	1955
Curb & Gutter	2352.5	L.F.	1955
Variable Curb & Gutter	50	L.F.	1955
6" Driveway	700	S.F.	1955
8" Valley Gutter	0	S.F.	1955
Subgrade Preparation	5554	S.Y.	1955
Subcut Excavation	10	Cu. Yd.	1955
Stabilized Gravel Base	10	Ton	1955
Asphalt	2.5	Base Course	1945
Bituminous Mixture	701	Ton	1945
Asphalt Cement	12,360	Gal.	1945
Asphalt	15"	Surface Course	1940
Bituminous Mixture	421	Ton	1940
Asphalt Cement	7934	Gal.	1940
Tack Coat	545	Gal.	1940
Asphalt Sealer	1962	Gal.	1940
Bituminous Material	1962	Gal.	1935
Cover Aggregate	8174	Ton	1935
Blotter Sand	11.0	Ton	1935
18" C.M.P.	50	L.F.	1935

\* The Revised Asphalt Quantities Were Computed With The Following Asphalt Mixtures:

Base Course 144.8 Lb./Cu.Ft. With 7% Asphalt Cement  
 Surface Course 144.6 Lb./Cu.Ft. With 7 1/2% Asphalt Cement  
 Asphalt Cement 19.60% 8.54 Lb./Gal.  
 Tack Coat 0.1 Gal./Sq.Yd.  
 Asphalt Sealer  
 Bituminous Material 0.36 Gal./Sq.Yd.  
 Cover Aggregate 30 Lb./Sq.Yd.  
 Blotter Sand 4 Lb./Sq.Yd.

AREA 2  
 34th AVENUE N.W.  
 (GWEN AVENUE)  
 STA. -(0+47.42)  
 TO  
 STA. 12+00  
 DEVELOPER'S WEST ACRES

PLAN  
 SURVEYED BY  
 PLOTTED BY  
 CHECKED BY  
 DATE

PROFILE  
 SURVEYED BY  
 PLOTTED BY  
 CHECKED BY  
 DATE