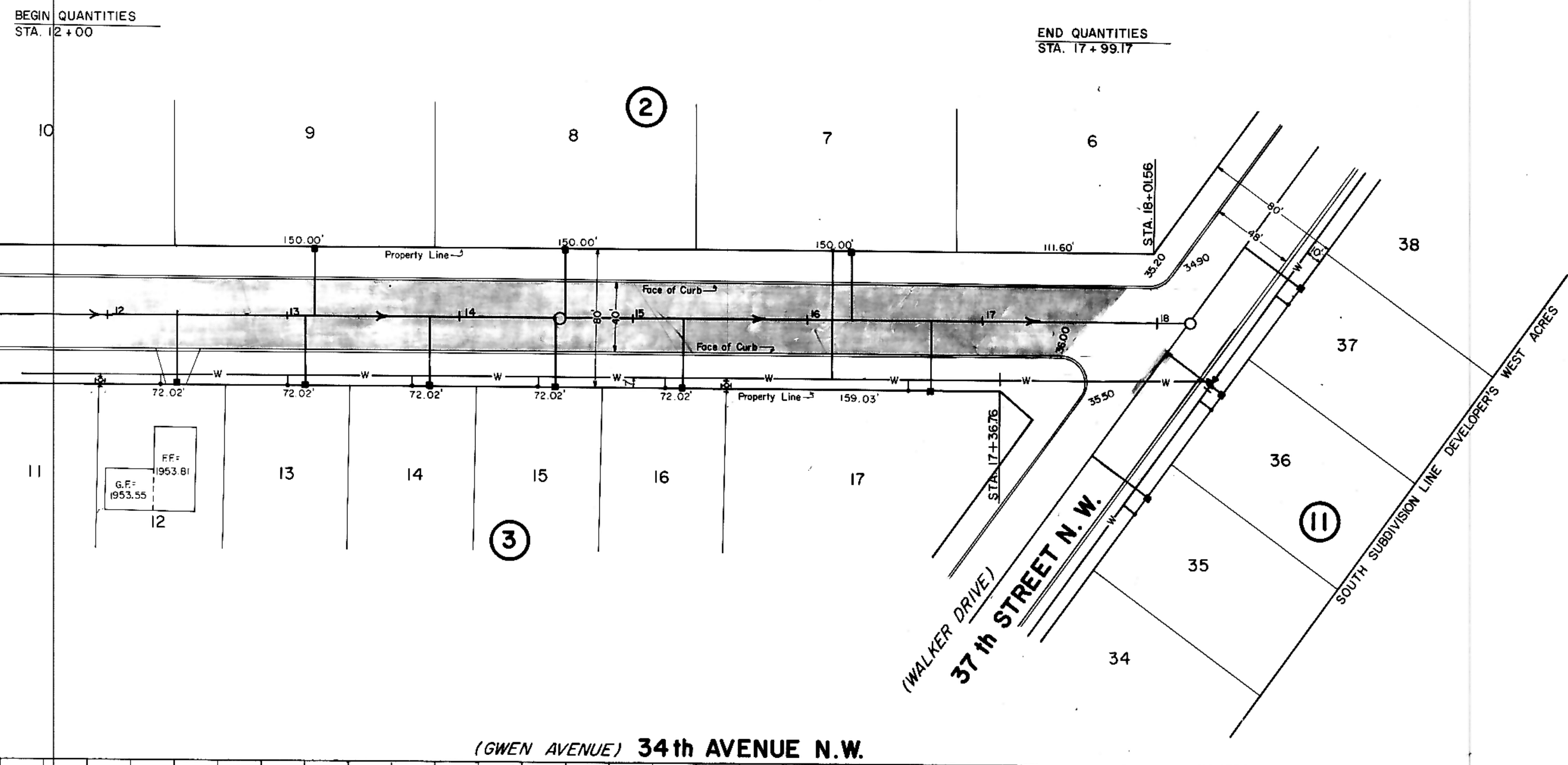


DATE
BY
SURVYD.
P. COTTED
NOTE BOOK
ALGUMIN CHECKED
NO.

DATE
BY
SURVYD.
NOTE BOOK
ALGUMIN CHECKED
NO.

HORIZONTAL SCALE: 1" = 50'
VERTICAL SCALE: 1" = 5'
DATE: JULY 1977

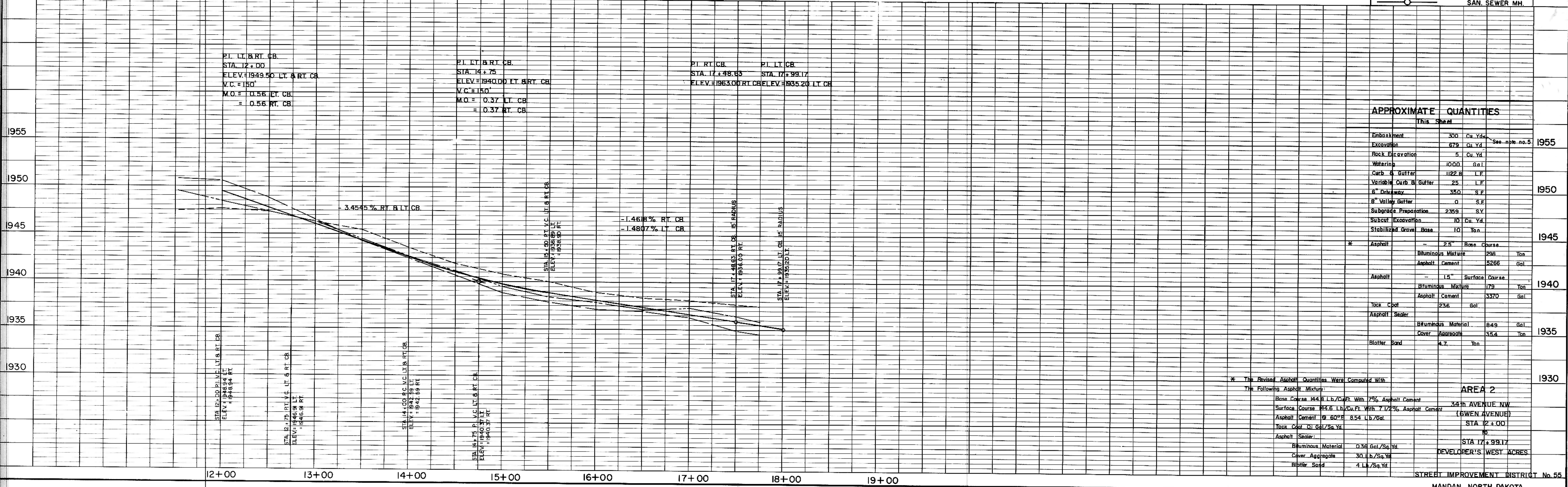
- NOTES:**
- Sewer and Water Improvements as shown on plans are existing as per date of street improvement plans. Existing Sewer and Water as per "Consolidated Water and Sewer Improvement District No. 24".
 - All curb and gutter radii are 15 feet at face of curb unless otherwise stated.
 - Proposed grades are to top of curb unless otherwise stated.
 - City Engineer shall confirm location of variable curb and gutter for driveways prior to construction of said curb.
 - Embankment quantities shown include an assumed 25% shrinkage factor.



(GWEN AVENUE) 34th AVENUE N.W.

LEGEND

(EXISTING)	CENTERLINE
---	50' LT.
---	50' RT.
(EXISTING)	WATER MAINS
W	HYDRANTS
+	GATE VALVES
T	TEES
P	PLUGS
S	SANITARY SEWER
SM	SAN. SEWER MH.



APPROXIMATE QUANTITIES

This Sheet		
Embankment	200 Cu. Yd.	See note no. 5
Excavation	679 Cu. Yd.	
Rock Excavation	5 Cu. Yd.	
Watering	1000 Gal.	
Curb & Gutter	1122 L.F.	
Variable Curb & Gutter	25 L.F.	
6" Driveway	35.0 S.F.	
8" Valley Gutter	0 S.F.	
Subgrade Preparation	2368 S.Y.	
Subcut Excavation	10 Cu. Yd.	
Stabilized Gravel Base	10 Ton	
* Asphalt	2.5" Base Course	
	Bluminous Mixture	296 Ton
	Asphalt Cement	5286 Gal.
Asphalt	1.5" Surface Course	
	Bluminous Mixture	79 Ton
	Asphalt Cement	3370 Gal.
Tack Coat	236 Gal.	
Asphalt Sealer		
	Bluminous Material	849 Gal.
	Cover Aggregate	354 Ton
	Blotter Sand	4.7 Ton

* The Revised Asphalt Quantities Were Computed With The Following Asphalt Mixtures:

Mixture	34th AVENUE NW
Base Course 144.8 Lb./Cu. Ft. With 7% Asphalt Cement	
Surface Course 143.6 Lb./Cu. Ft. With 7.12% Asphalt Cement	
Asphalt Cement @ 60°F 8.54 Lb./Gal.	
Tack Coat @ Gal./Sq. Yd.	
Asphalt Sealer:	
Bluminous Material	0.36 Gal./Sq. Yd.
Cover Aggregate	30 Lb./Sq. Yd.
Blotter Sand	4 Lb./Sq. Yd.

AREA 2
34th AVENUE NW
(GWEN AVENUE)
STA. 12+00
STA. 17+99.17
DEVELOPER'S WEST ACRES

PLATE 1, PLAN PROFILE
KEUFEL & ESSER CO.
48 7024 MADE IN U.S.A.