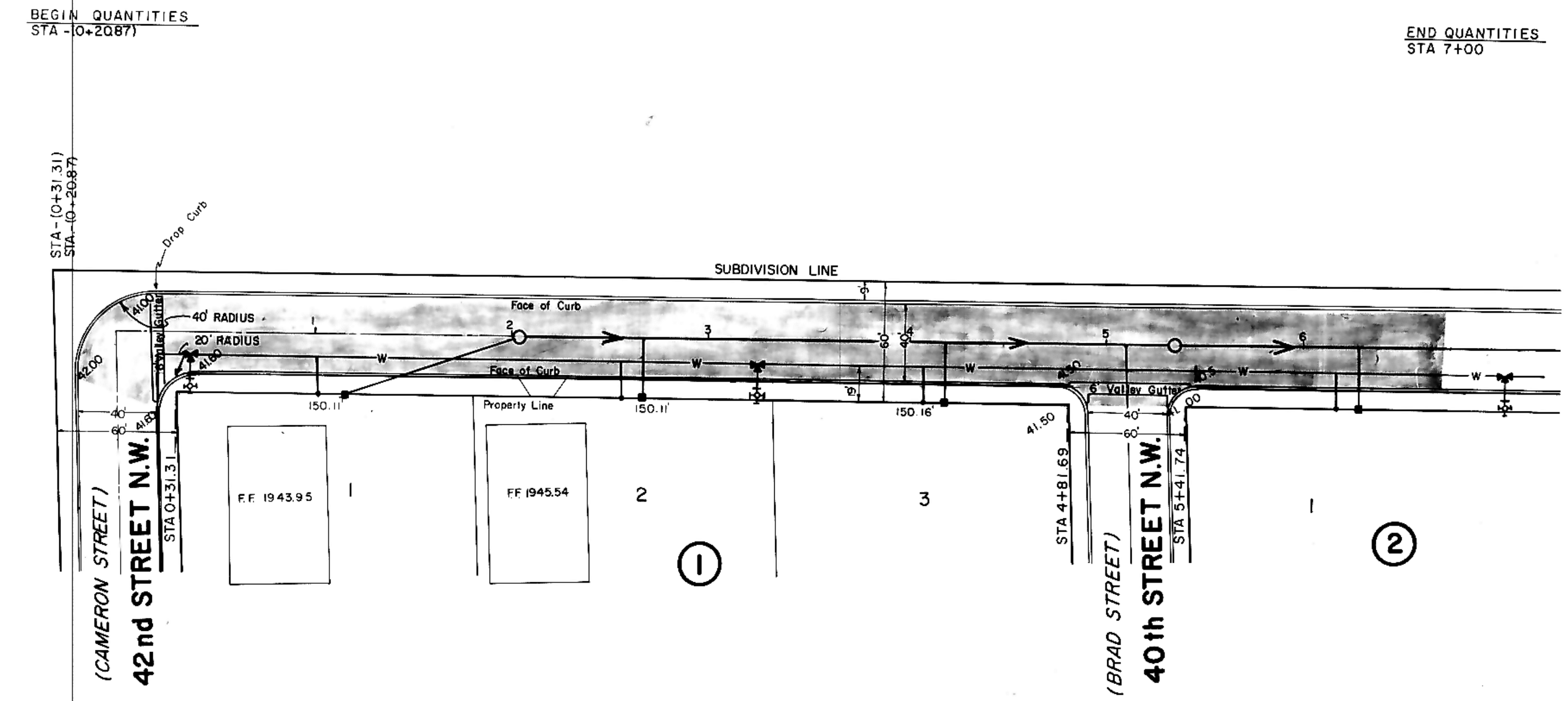


- NOTES:**
- Sewer and Water Improvements as shown on plans are existing as per date of street improvement plans. Existing Sewer and Water as per "Consolidated Water and Sewer Improvement District No. 24".
 - All curb and gutter radii are 15 feet at face of curb unless otherwise stated.
 - Proposed grades are to top of curb unless otherwise stated.
 - City Engineer shall confirm location of variable curb and gutter for driveways prior to construction of said curb.
 - Embankment quantities shown include an assumed 25% shrinkage factor.

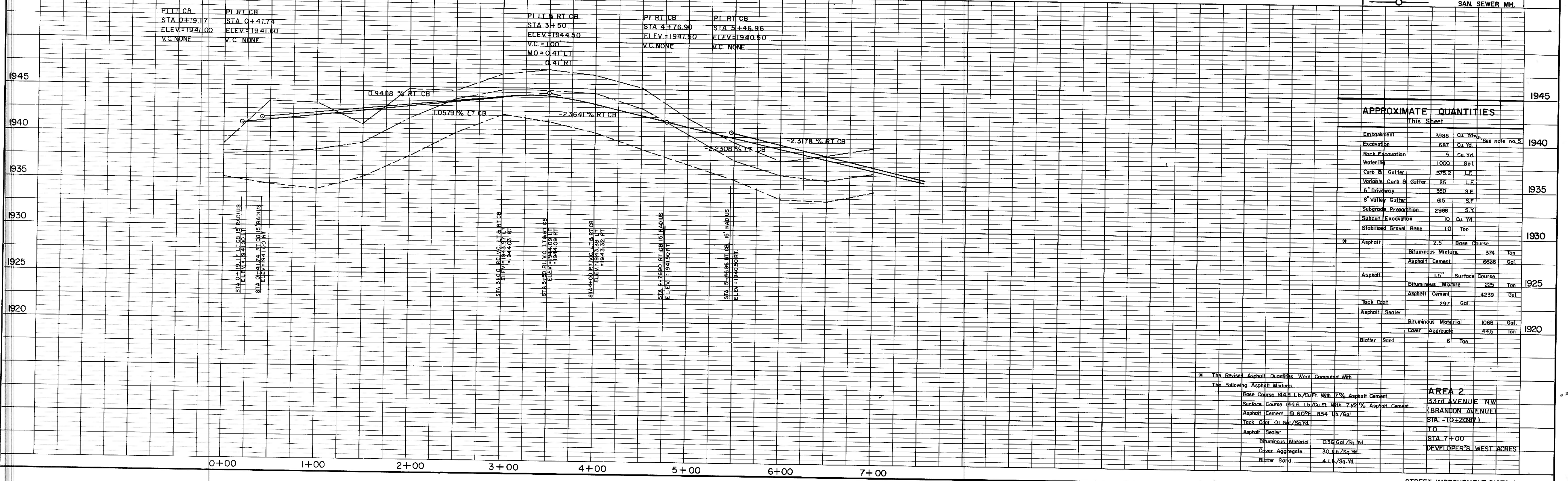
HORIZONTAL SCALE: 1" = 50'
 VERTICAL SCALE: 1" = 5'
 DATE: JULY, 1977



PLAN
 SURVEYED BY: _____
 DATE: _____
 NOTE BOOK NO. _____
 CHECKED BY: _____
 DATE: _____

PROFILE
 SURVEYED BY: _____
 DATE: _____
 NOTE BOOK NO. _____
 CHECKED BY: _____
 DATE: _____

(BRANDON AVENUE) 33rd AVENUE N.W.



LEGEND

- (EXISTING) CENTERLINE
- 50' LT.
- 50' RT.
- (EXISTING) WATERMAINS
- HYDRANTS
- GATE VALVES
- TEES
- PLUGS
- SANITARY SEWER
- SAN SEWER MH.

APPROXIMATE QUANTITIES
 This Sheet

Embankment	3988	Cu. Yd.	
Excavation	687	Cu. Yd.	See note no. 5
Rock Excavation	5	Cu. Yd.	
Watering	1000	Gal.	
Curb & Gutter	1375.2	L.F.	
Variable Curb & Gutter	25	L.F.	
6" Driveway	350	S.F.	
8" Valley Gutter	615	S.F.	
Subgrade Preparation	2968	S.Y.	
Subcut Excavation	10	Cu. Yd.	
Stabilized Gravel Base	10	Ton	
* Asphalt	2.5	Base Course	
Bituminous Mixture	374	Ton	
Asphalt Cement	6826	Gal.	
Asphalt	1.5	Surface Course	
Bituminous Mixture	225	Ton	
Asphalt Cement	4239	Gal.	
Tack Coat	297	Gal.	
Asphalt Spreader			
Bituminous Material	1088	Gal.	
Coar. Aggregate	44.5	Ton	
Blotter Sand	6	Ton	

* The Revised Asphalt Quantities Were Computed With The Following Asphalt Mixture:
 Base Course 14.4 B.L./Cu. Ft. With 7% Asphalt Cement
 Surface Course 14.6 L.H./Cu. Ft. With 7.2% Asphalt Cement
 Asphalt Cement @ 60°F 854 Lb./Gal.
 Tack Coat Oil 6.17/Sq. Yd.
 Asphalt Spreader:
 Bituminous Material 0.36 Gal./Sq. Yd.
 Coar. Aggregate 30 Lb./Sq. Yd.
 Blotter Sand 4 Lb./Sq. Yd.

AREA 2
 33rd AVENUE N.W.
 (BRANDON AVENUE)
 STA. - (0+2087)
 (10)
 STA 7+00
 DEVELOPER'S WEST ACRES