

NOTES:

- Proposed Sewer and Water Improvements on 3rd Avenue NE are shown on plans for "Consolidated Sewer and Water Improvement District No. 25". Said Sewer and Water Improvements shall be installed prior to any street improvements and contractor shall be responsible for the preservation of said Sewer and Water Improvements during construction.
- Depress crown and tip gutter section to allow drainage to flow across intersection as indicated.
- Proposed grades are to top of curb unless otherwise stated.
- All curb and gutter radii are 15 feet at face of curb unless otherwise stated.
- Embankment quantities shown include an assumed 30% shrinkage factor.

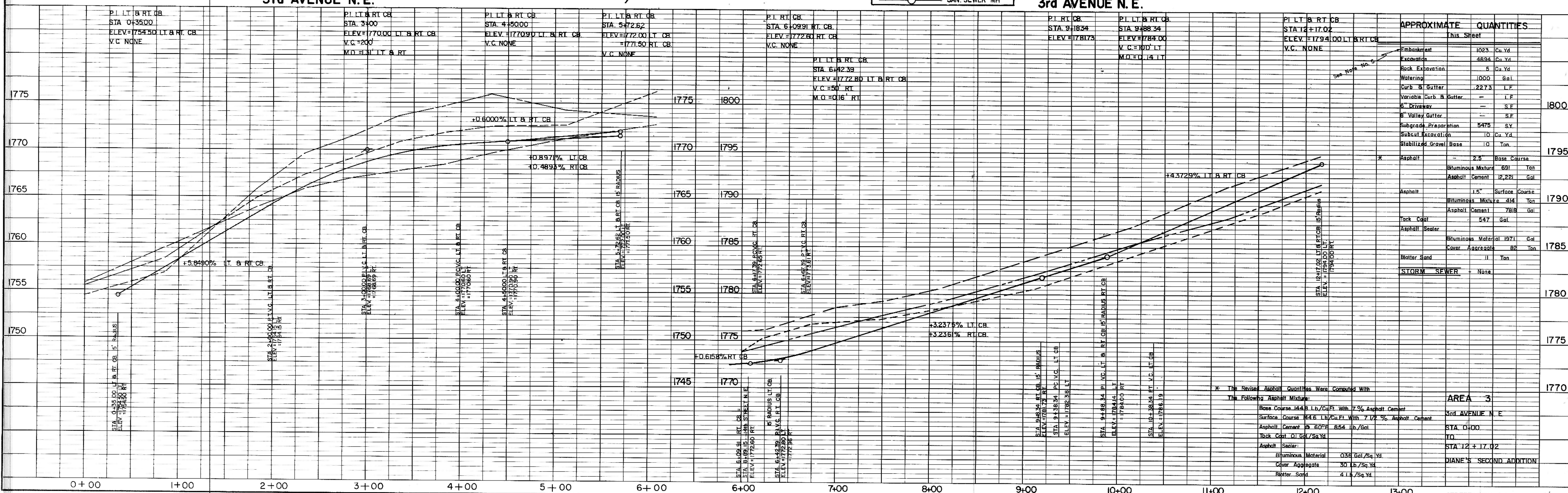
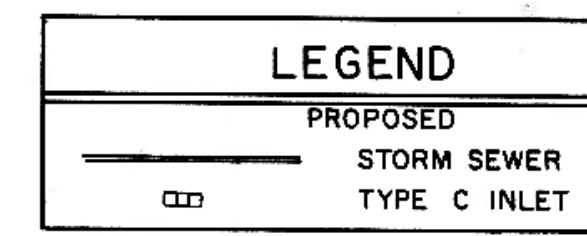
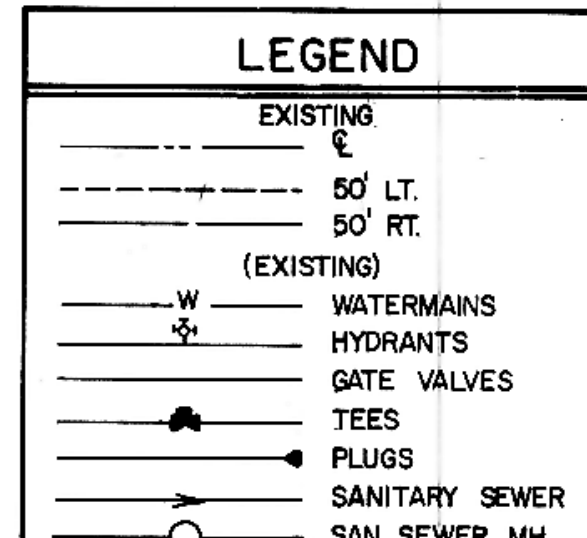
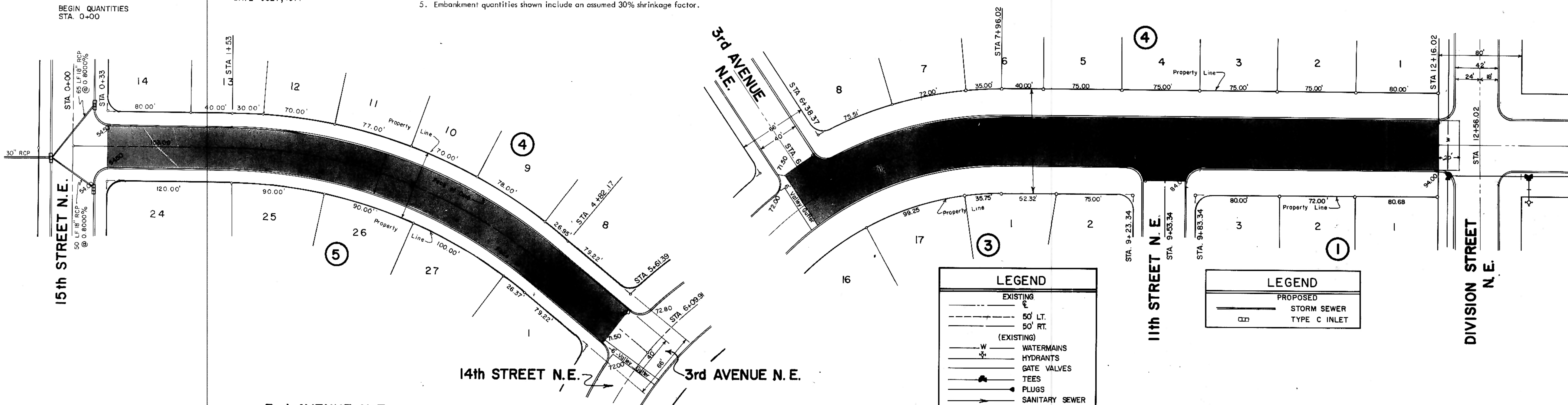
HORIZONTAL SCALE: 1" = 50'
VERTICAL SCALE: 1" = 5'
DATE: JULY, 1977

HORIZONTAL SCALE: 1" = 50'
VERTICAL SCALE: 1" = 5'
DATE: JULY, 1977

END QUANTITIES
STA 12+17.02

PLAN
DATE: _____
BY: _____
CHECKED: _____
NO. _____

PROFILE
DATE: _____
BY: _____
CHECKED: _____
NO. _____



APPROXIMATE QUANTITIES	QUANTITIES
Embankment	1023 Cu Yd
Excavation	4884 Cu Yd
Rock Excavation	5 Cu Yd
Watering	1000 Gal
Curb & Gutter	2273 L.F.
Variable Curb & Gutter	— L.F.
6" Driveway	— S.F.
8" Valley Gutter	— S.F.
Subgrade Preparation	5475 S.Y.
Subsoil Excavation	10 Cu Yd
Stabilized Gravel Base	10 Ton
Asphalt	2.5 Base Course
Bituminous Mixture	691 Ton
Asphalt Cement	12,221 Gal
Asphalt	1.5" Surface Course
Bituminous Mixture	414 Ton
Asphalt Cement	7818 Gal
Tack Coat	547 Gal
Asphalt Sealer	—
Bituminous Material	1971 Gal
Cover Aggregate	82 Ton
Blotter Sand	11 Ton
STORM SEWER	None

* The Revised Approx. Quantities Were Computed With The Following Asphalt Mixture:
 Base Course 144.8 Lb./Cu.Ft. With 7% Asphalt Cement
 Surface Course 144.6 Lb./Cu.Ft. With 7.12% Asphalt Cement
 Asphalt Cement @ 60°F 854 lb./Gal
 Tack Coat 0.1 Gal/Sq.Yd.
 Asphalt Sealer:
 Bituminous Material 0.36 Gal/Sq.Yd.
 Cover Aggregate 30 Lb./Sq.Yd.
 Blotter Sand 4.1 Lb./Sq.Yd.