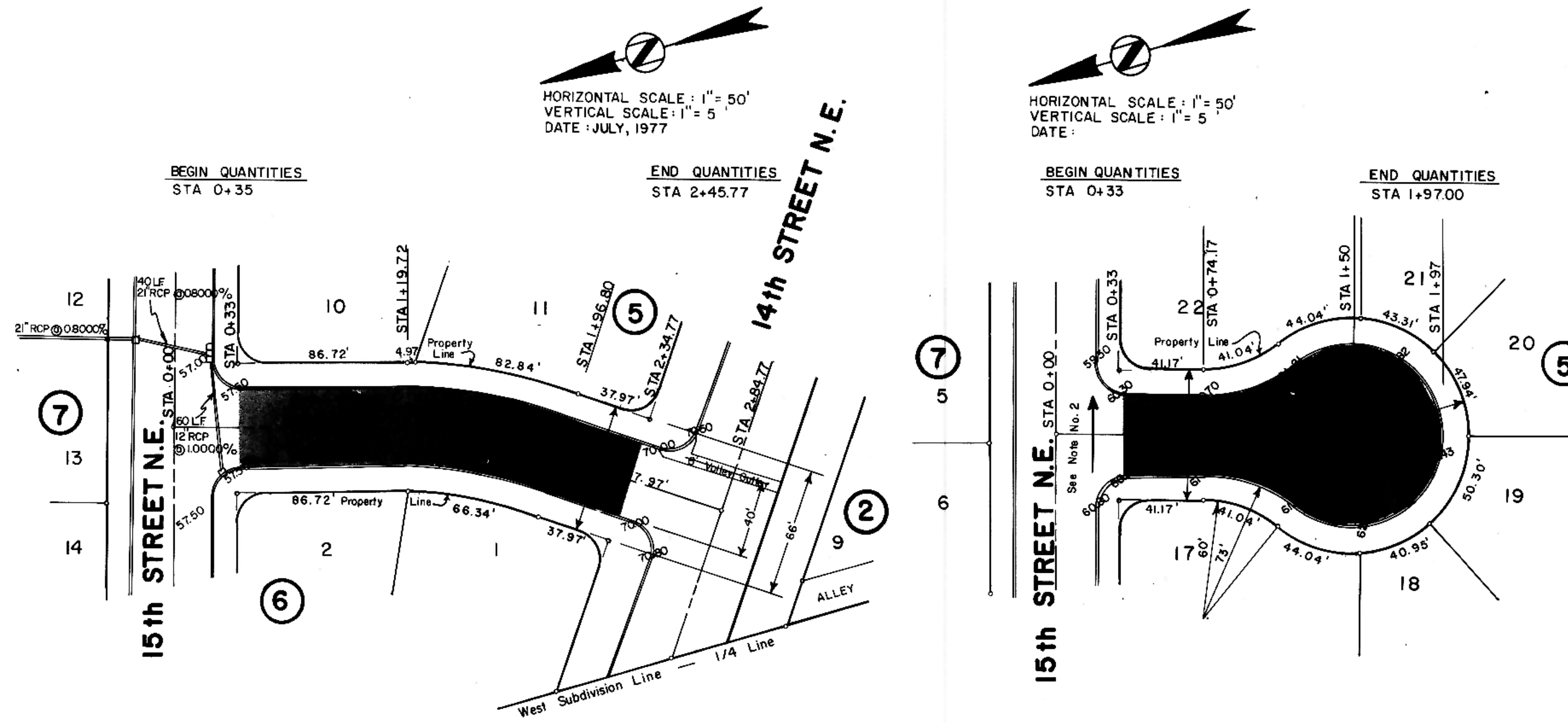


PLAN
NOTE BOOK
NO.

PROFILE
NOTE BOOK
NO.



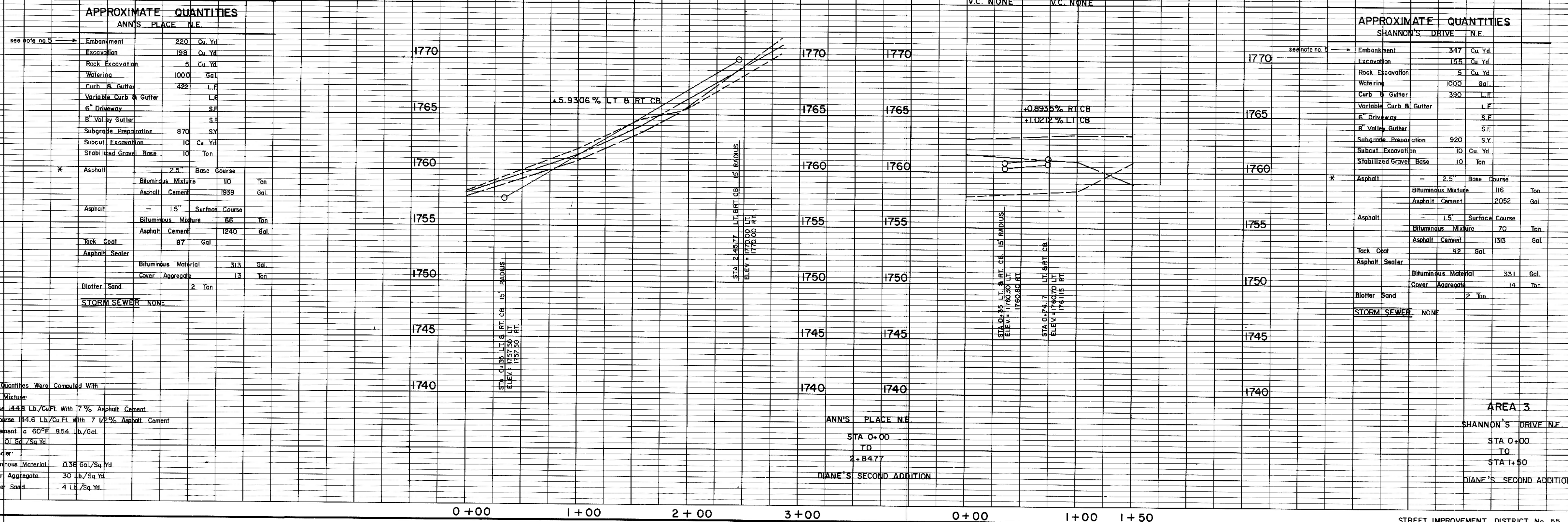
- NOTES:
- Proposed Sewer and Water Improvements on Shannon Drive NE and Ann's Place NE are shown on plans for "Consolidated Sewer and Water Improvement District No. 25". Said Sewer and Water Improvements shall be installed prior to any street improvements and contractor shall be responsible for the preservation of said Sewer and Water Improvements during construction.
 - Depress crown and tip gutter section to allow drainage to flow across intersection as indicated.
 - Proposed grades are to top of curb unless otherwise stated.
 - All curb and gutter radii are 15 feet at face of curb unless otherwise stated.
 - Embankment quantities shown include an assumed 30% shrinkage factor.

LEGEND

---	EXISTING
---	50' L.T.
---	50' R.T.
□	PROPOSED TYPE A INLET
□	TYPE B INLET
□	TYPE C INLET
—	STORM SEWER
—	STORM SEWER MH

ANN'S PLACE N.E.

SHANNON'S DRIVE N.E.



* The Revised Asphalt Quantities Were Computed With The Following Asphalt Mixture:
 Base Course 14.8 Lb./Cu.Ft. With 7% Asphalt Cement
 Surface Course 14.6 Lb./Cu.Ft. With 7 1/2% Asphalt Cement
 Asphalt Cement @ 60°F 8.54 Lb./Gal.
 Tack Coat 0.1 Gal./Sq. Yd.
 Asphalt Sealer:
 Bituminous Material 0.38 Gal./Sq. Yd.
 Cover Aggregate 30 Lb./Sq. Yd.
 Blotter Sand .4 Lb./Sq. Yd.