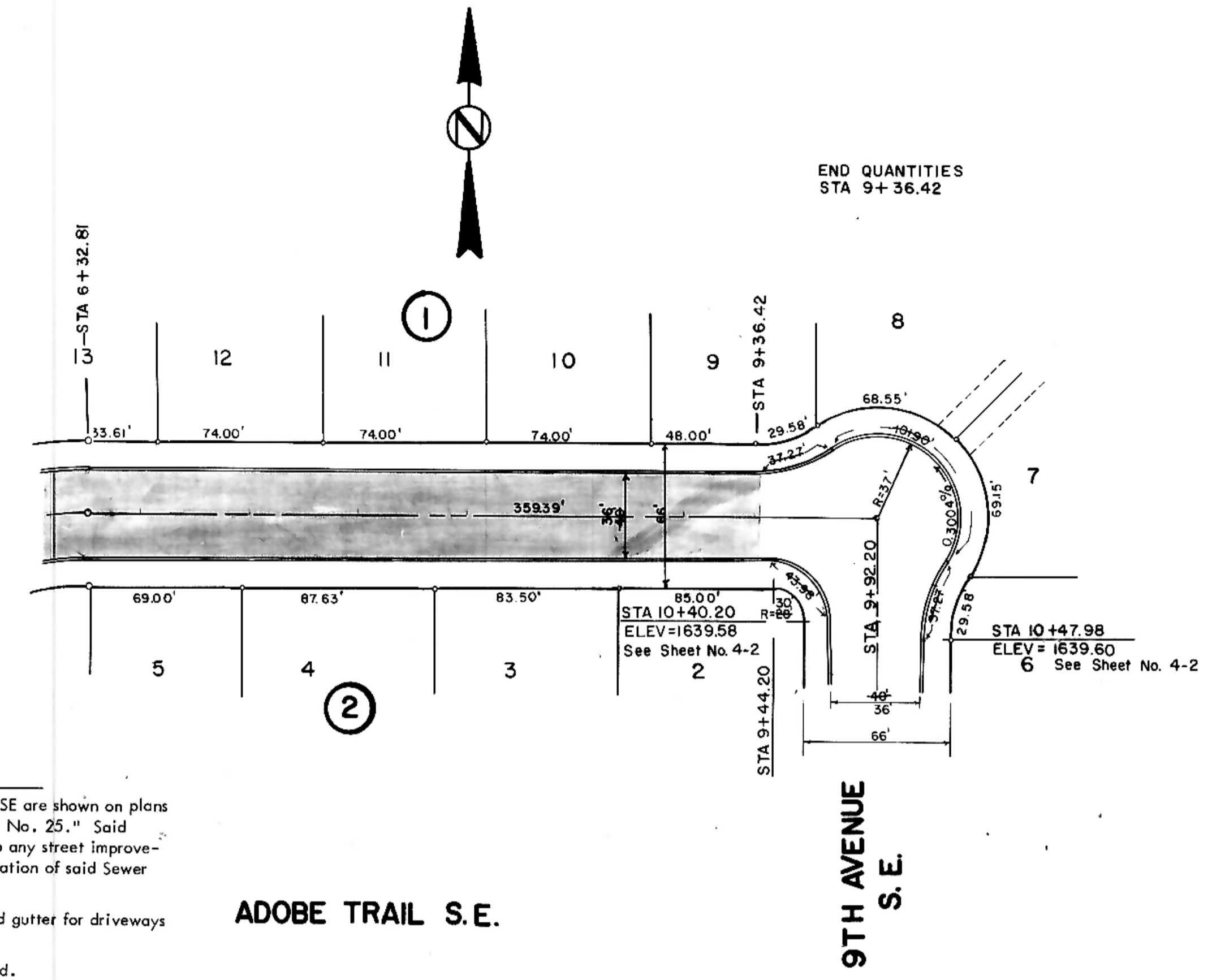
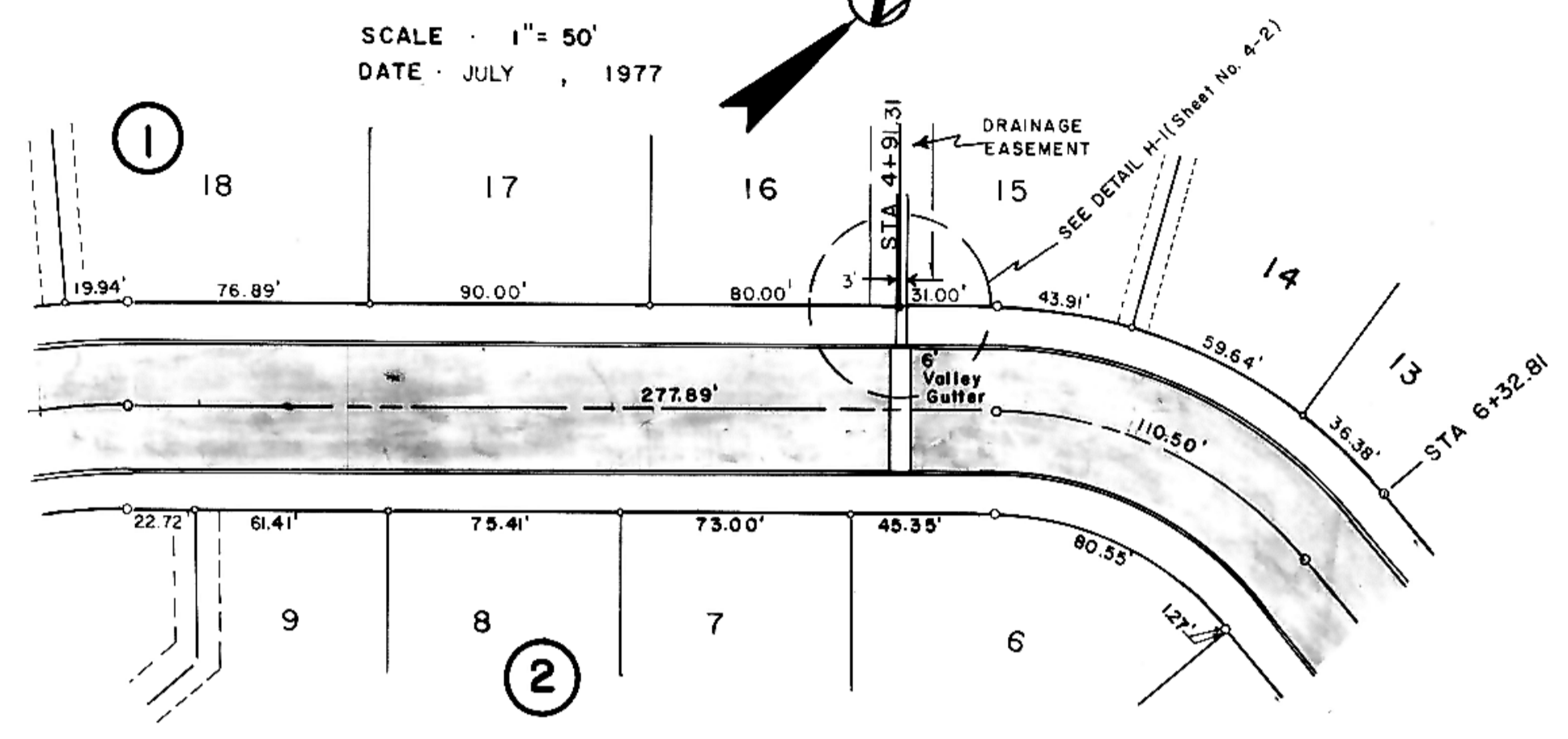
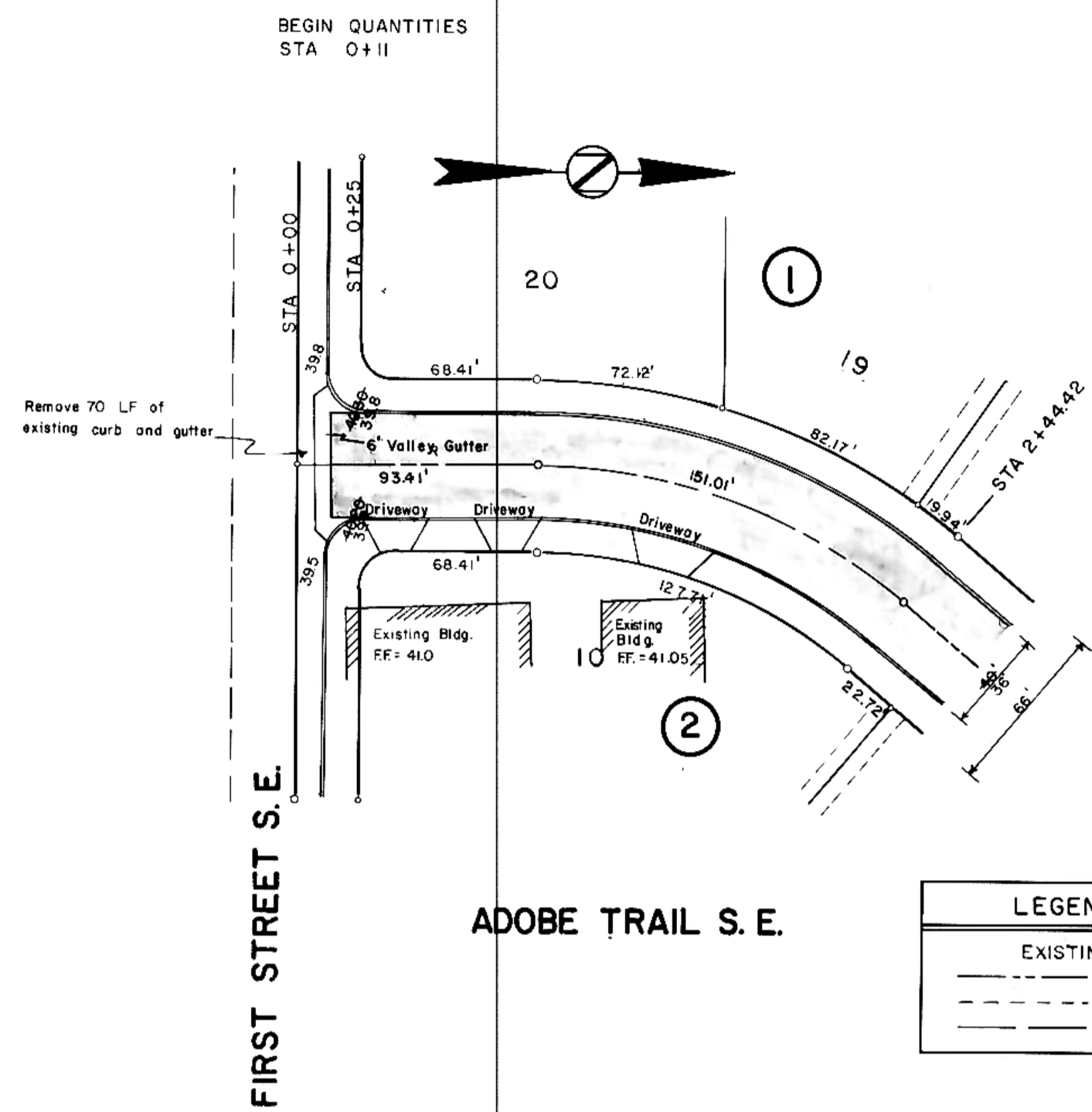


DATE
BY
SURVEYED
NOTED
PLANNED
ALIGNED
CHECKED
NOTE BOOK
No.

DATE
BY
SURVEYED
NOTED
PLANNED
ALIGNED
CHECKED
NOTE BOOK
No.

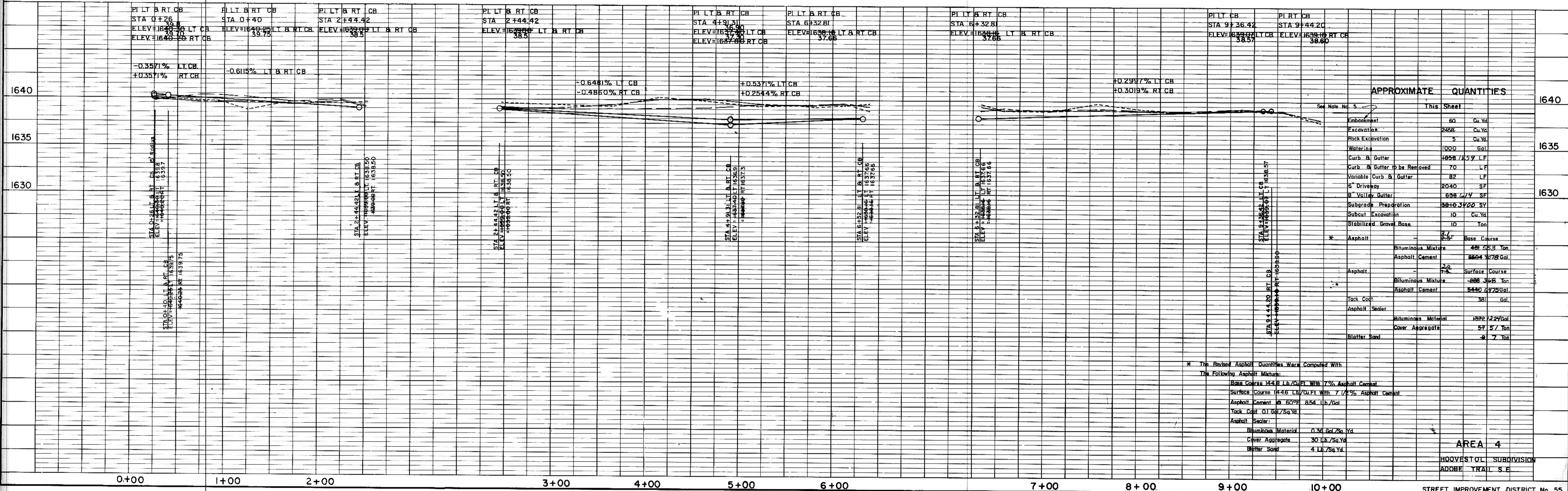


LEGEND

EXISTING	—
50' LT	- - -
50' RT	- - -

- NOTES:**
- Proposed Sewer and Water Improvements on Adobe Trail SE are shown on plans for "Consolidated Sewer and Water Improvement District No. 25." Said Sewer and Water Improvements shall be installed prior to any street improvements and Contractor shall be responsible for the preservation of said Sewer and Water Improvements during construction.
 - City Engineer shall confirm location of variable curb and gutter for driveways prior to construction of said curb.
 - Proposed grades are to top of curb unless otherwise stated.
 - All curb and gutter radii are 15 feet to face of curb unless otherwise stated.
 - Embankment quantities shown include an assumed 25% shrinkage factor.

HORIZONTAL SCALE · 1" = 50'
VERTICAL SCALE · 1" = 5'



APPROXIMATE QUANTITIES

	This Sheet	
Embankment	60	Cu. Yd.
Excavation	2458	Cu. Yd.
Rock Excavation	5	Cu. Yd.
Watering	1000	Gal.
Curb & Gutter	1898	L.F.
Curb & Gutter to be Removed	70	L.F.
Variable Curb & Gutter	82	L.F.
6" Driveway	2040	SF
6" Valley Gutter	638	L.F.
Subgrade Preparation	3816	SF
Subcut Excavation	10	Cu. Yd.
Stabilized Gravel Base	10	Ton
Asphalt	37	Base Course
Bituminous Mixture	481	Sq. Yd.
Asphalt Cement	8864	Gal.
Asphalt	20	Surface Course
Bituminous Mixture	888	Sq. Yd.
Asphalt Cement	5440	Gal.
Tack Coat	38	Gal.
Asphalt Sealer	1392	Gal.
Bituminous Material	30	Sq. Yd.
Cover Aggregate	57	Ton
Blotter Sand	4	Ton

* The Revised Asphalt Quantities Were Computed With The Following Asphalt Mixture:
 Base Course 144 Lb./Cu. Ft. With 7% Asphalt Cement
 Surface Course 1435 Lb./Cu. Ft. With 7 1/2% Asphalt Cement
 Asphalt Cement @ 60°F 854 Lb./Gal.
 Tack Coat 0.1 Gal./Sq. Yd.
 Asphalt Sealer:
 Bituminous Material 0.36 Gal./Sq. Yd.
 Cover Aggregate 30 Lb./Sq. Yd.
 Blotter Sand 4 Lb./Sq. Yd.

AREA 4
 HQQUEST OL SUBDIVISION
 ADOBE TRAIL S.E.
 STREET IMPROVEMENT DISTRICT No. 55
 MANDAN, NORTH DAKOTA
 SHEET No. 4-1
 DATE REVISED - MARCH, 1978