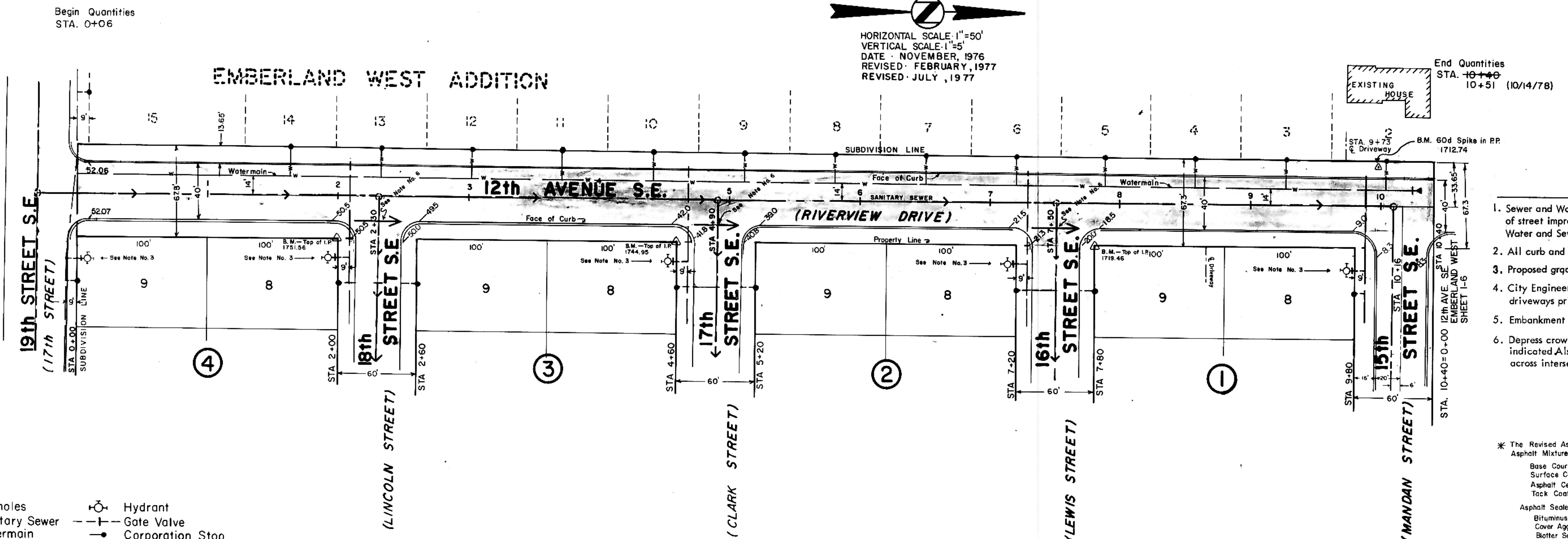


PLAN  
 DATE: \_\_\_\_\_  
 BY: \_\_\_\_\_  
 CHECKED: \_\_\_\_\_  
 SUPERVISOR: \_\_\_\_\_  
 ENGINEER: \_\_\_\_\_  
 NOTE BOOK: \_\_\_\_\_  
 NO. \_\_\_\_\_

PROFILE  
 DATE: \_\_\_\_\_  
 BY: \_\_\_\_\_  
 CHECKED: \_\_\_\_\_  
 SUPERVISOR: \_\_\_\_\_  
 ENGINEER: \_\_\_\_\_  
 NOTE BOOK: \_\_\_\_\_  
 NO. \_\_\_\_\_

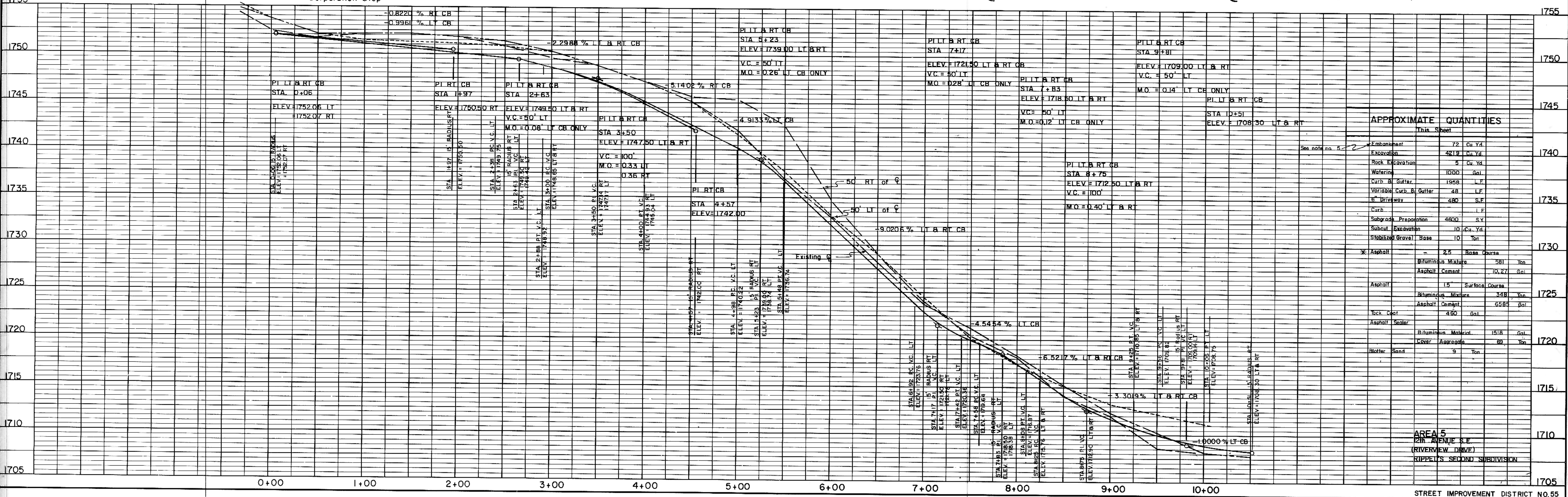
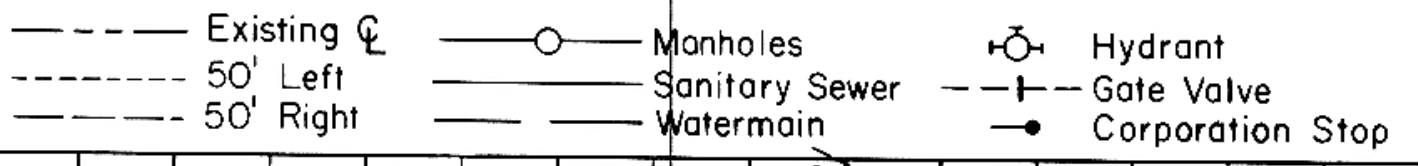


- NOTES
- Sewer and Water Improvements as shown on plans are existing as per date of street improvement plans. Existing Sewer and Water as per Consolidated Water and Sewer Improvement District No. 23.
  - All curb and gutter radii are 15 feet at face of curb unless otherwise stated.
  - Proposed grades are to top of curb.
  - City Engineer shall confirm location of variable curb and gutter for driveways prior to construction of said curb.
  - Embankment quantities include an assumed 25% shrinkage factor.
  - Depress crown to allow drainage to flow across intersection as indicated. Also tip gutter section to allow storm water to flow across intersection.

\* The Revised Asphalt Quantities Were Computed With The Following Asphalt Mixture

Base Course 144.8 Lb/Cu Ft With 7% AC  
 Surface Course 144.6 Lb/Cu Ft With 7 1/2 % AC  
 Asphalt Cement @ 60° F. 8.54 Lb/Gal.  
 Tack Coat 0.1 Gal/Sq Yd

Asphalt Sealer  
 Bituminous Material 0.36 Gal/Sq Yd  
 Cover Aggregate 30 Lb/Sq Yd  
 Botter Sand 4 Lb/Sq Yd



APPROXIMATE QUANTITIES

Item	Quantity	Unit
Embankment	72	Cu Yd
Excavation	4219	Cu Yd
Rock Excavation	5	Cu Yd
Watermain	1000	Gal
Curb & Gutter	1958	L.F.
Variable Curb & Gutter	48	L.F.
6" Driveway	480	S.F.
Curb	1	L.F.
Subgrade Preparation	4600	S.Y.
Subcut Excavation	10	Cu Yd
Stabilized Gravel Base	10	Ton
Asphalt	2.5	Base Course
Bituminous Mixture	581	Ton
Asphalt Cement	10,27	Gal
Asphalt	15	Surface Course
Bituminous Mixture	348	Ton
Asphalt Cement	5585	Gal
Rock Coat	450	Gal
Asphalt Sealer	1518	Gal
Bituminous Material	1518	Gal
Cover Aggregate	89	Ton
Botter Sand	9	Ton