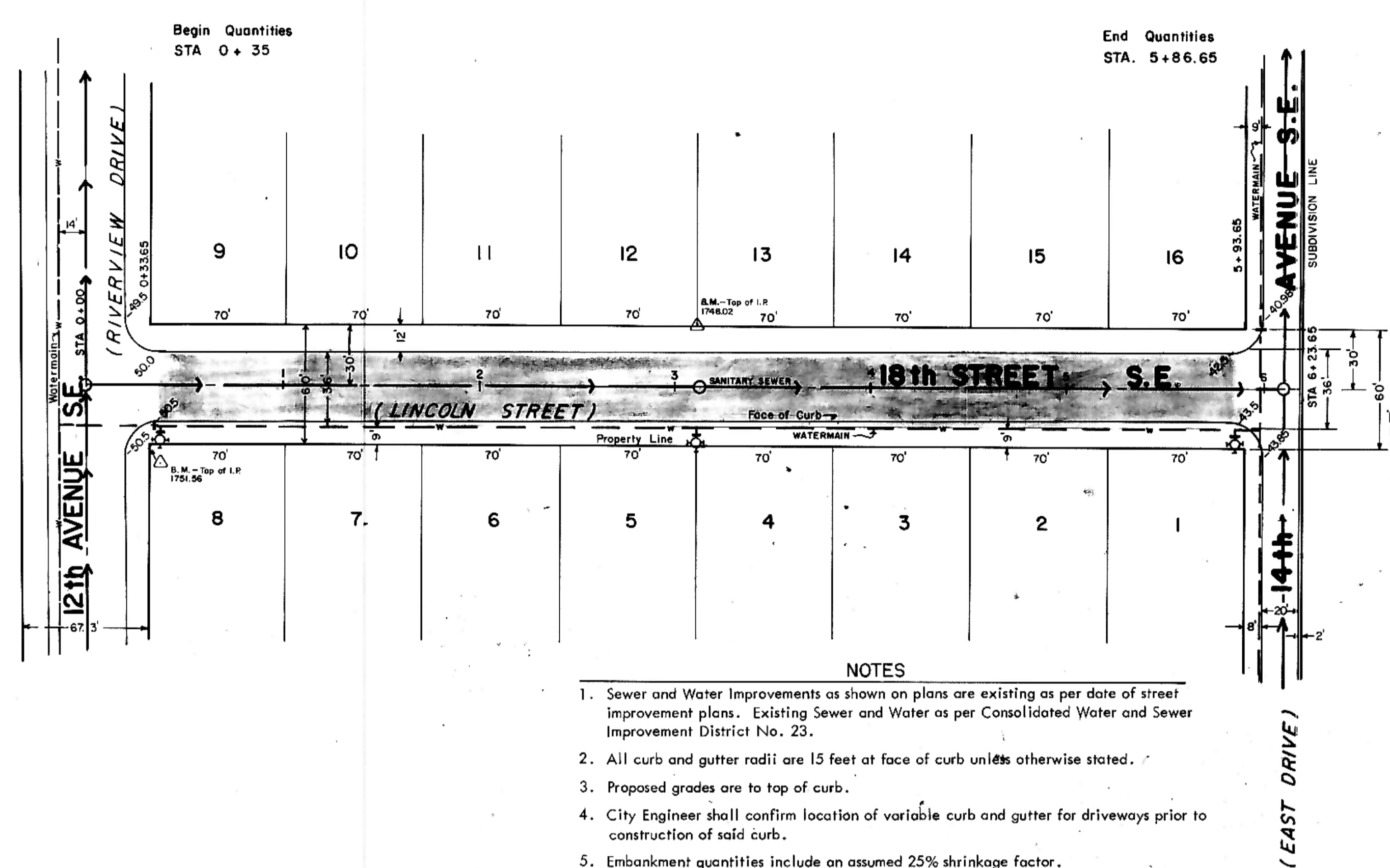
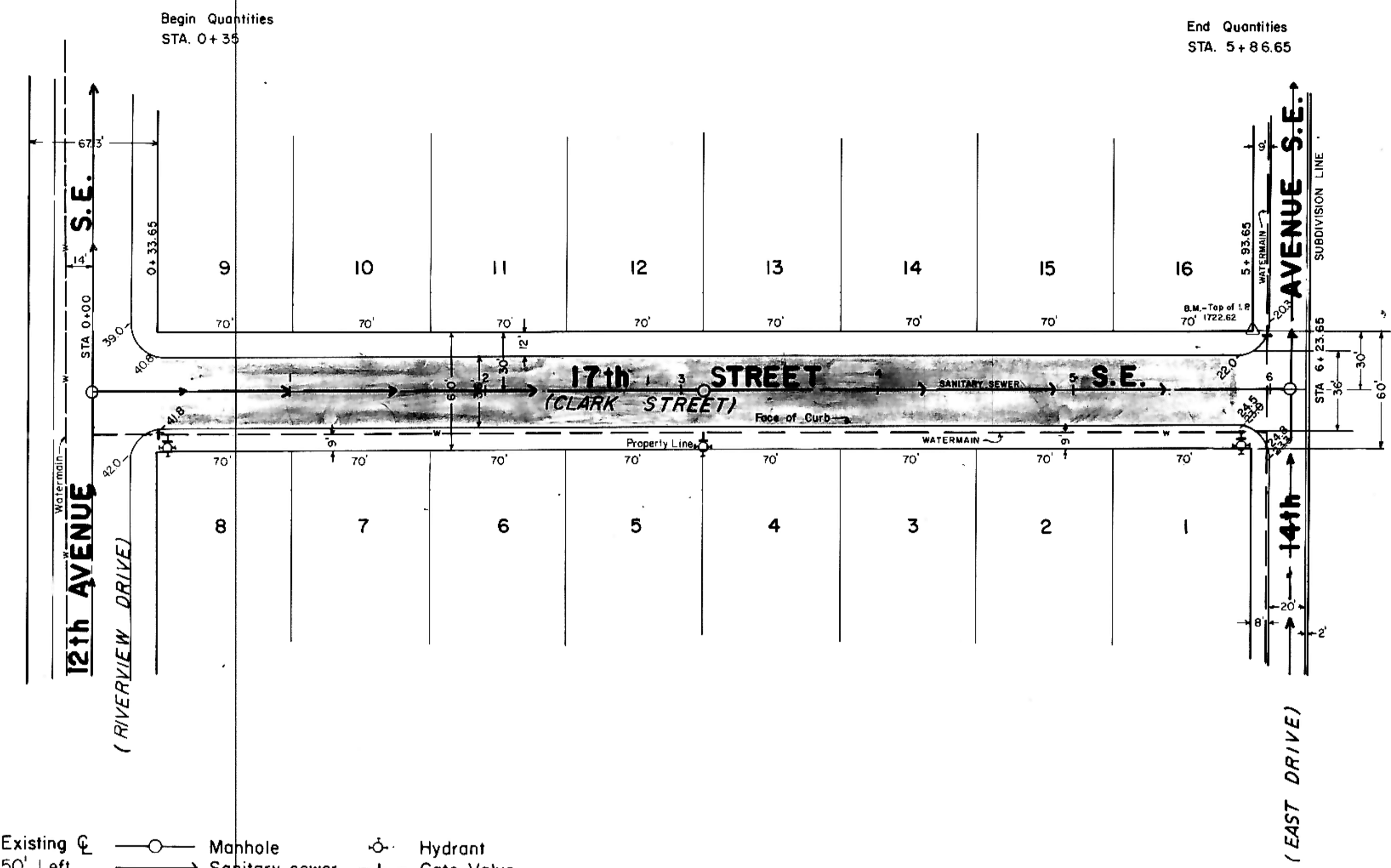
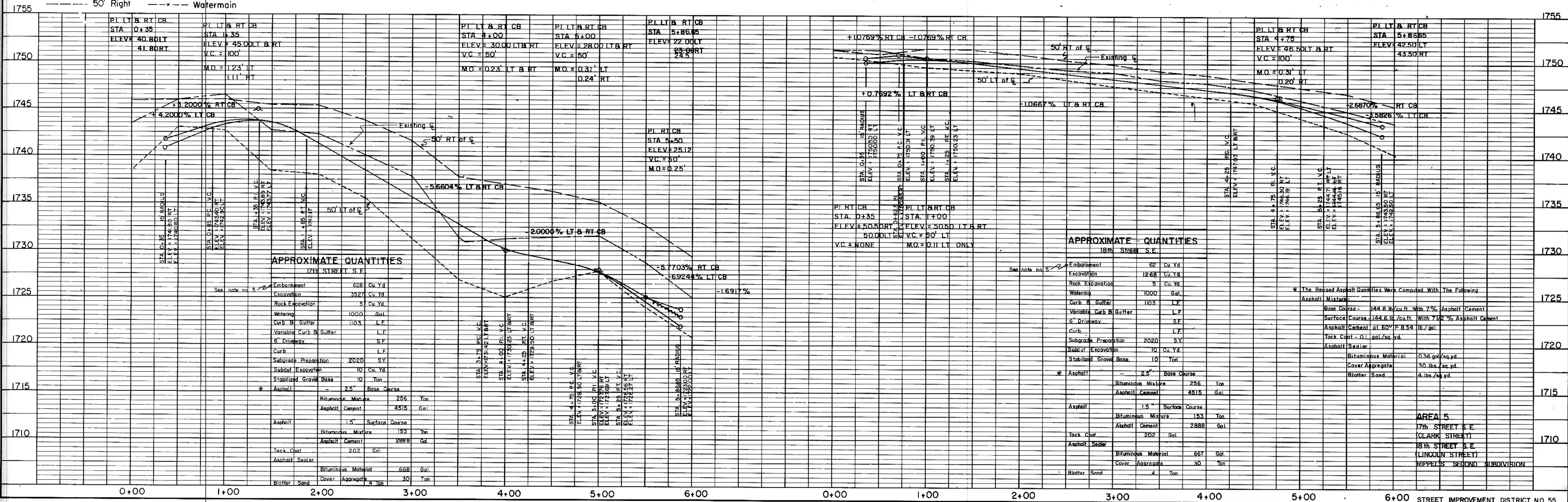


|           |      |
|-----------|------|
| PLAN      | DATE |
| NOTE BOOK | BY   |
| NO.       | DATE |

|           |      |
|-----------|------|
| PROFILE   | DATE |
| NOTE BOOK | BY   |
| NO.       | DATE |



- NOTES
1. Sewer and Water Improvements as shown on plans are existing as per date of street improvement plans. Existing Sewer and Water as per Consolidated Water and Sewer Improvement District No. 23.
  2. All curb and gutter radii are 15 feet at face of curb unless otherwise stated.
  3. Proposed grades are to top of curb.
  4. City Engineer shall confirm location of variable curb and gutter for driveways prior to construction of said curb.
  5. Embankment quantities include an assumed 25% shrinkage factor.



APPROXIMATE QUANTITIES

17th Street S.E.

|                        |      |                |
|------------------------|------|----------------|
| Embankment             | 628  | Cu. Yd.        |
| Excavation             | 3527 | Cu. Yd.        |
| Rock Excavation        | 5    | Cu. Yd.        |
| Watering               | 1000 | Gal.           |
| Curb & Gutter          | 1103 | L.F.           |
| Variable Curb & Gutter |      | L.F.           |
| 6" Driveway            |      | S.F.           |
| Curb                   |      | L.F.           |
| Subgrade Preparation   | 2020 | S.Y.           |
| Subcut Excavation      | 10   | Cu. Yd.        |
| Stabilized Gravel Base | 10   | Ton            |
| Asphalt                | 2.5" | Base Course    |
| Bituminous Mixture     | 256  | Ton            |
| Asphalt Cement         | 4515 | Gal.           |
| Asphalt                | 1.5" | Surface Course |
| Bituminous Mixture     | 153  | Ton            |
| Asphalt Cement         | 2888 | Gal.           |
| Tack Coat              | 202  | Gal.           |
| Asphalt Sealer         |      |                |
| Bituminous Material    | 668  | Gal.           |
| Cover Aggregate        | 30   | Ton            |
| Blotter Sand           |      |                |

APPROXIMATE QUANTITIES

18th Street S.E.

|                        |      |                |
|------------------------|------|----------------|
| Embankment             | 82   | Cu. Yd.        |
| Excavation             | 1268 | Cu. Yd.        |
| Rock Excavation        | 5    | Cu. Yd.        |
| Watering               | 1000 | Gal.           |
| Curb & Gutter          | 1103 | L.F.           |
| Variable Curb & Gutter |      | L.F.           |
| 6" Driveway            |      | S.F.           |
| Curb                   |      | L.F.           |
| Subgrade Preparation   | 2020 | S.Y.           |
| Subcut Excavation      | 10   | Cu. Yd.        |
| Stabilized Gravel Base | 10   | Ton            |
| Asphalt                | 2.5" | Base Course    |
| Bituminous Mixture     | 256  | Ton            |
| Asphalt Cement         | 4515 | Gal.           |
| Asphalt                | 1.5" | Surface Course |
| Bituminous Mixture     | 153  | Ton            |
| Asphalt Cement         | 2888 | Gal.           |
| Tack Coat              | 202  | Gal.           |
| Asphalt Sealer         |      |                |
| Bituminous Material    | 667  | Gal.           |
| Cover Aggregate        | 30   | Ton            |
| Blotter Sand           |      |                |

\* The Revised Asphalt Quantities Were Computed With The Following Asphalt Mixture:

|                         |   |
|-------------------------|---|
| Base Course             | 144.8 lb/cu. ft. With 7% Asphalt Cement   |
| Surface Course          | 144.6 lb/cu. ft. With 7.2% Asphalt Cement |
| Asphalt Cement at 60° F | 8.54 lb/gal.                              |
| Tack Coat               | 0.1 gal/sq. yd.                           |
| Asphalt Sealer          |   |
| Bituminous Material     | 0.36 gal/sq. yd.                          |
| Cover Aggregate         | 30 lbs./sq. yd.                           |
| Blotter Sand            | 4 lbs./sq. yd.                            |

AREA 5  
17th STREET S.E.  
(CLARK STREET)  
18th STREET S.E.  
(LINCOLN STREET)  
RIPPERS' SECOND SUBDIVISION