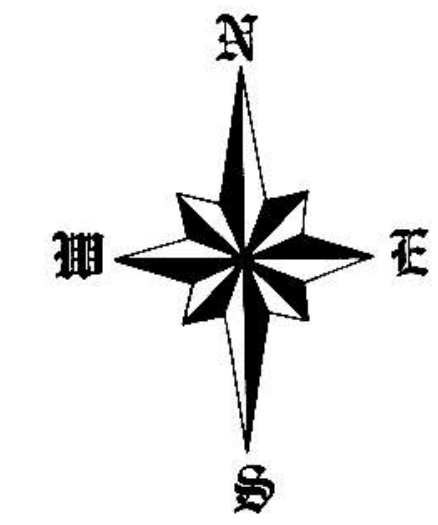


STREET IMPROVEMENT DISTRICT NO. 55

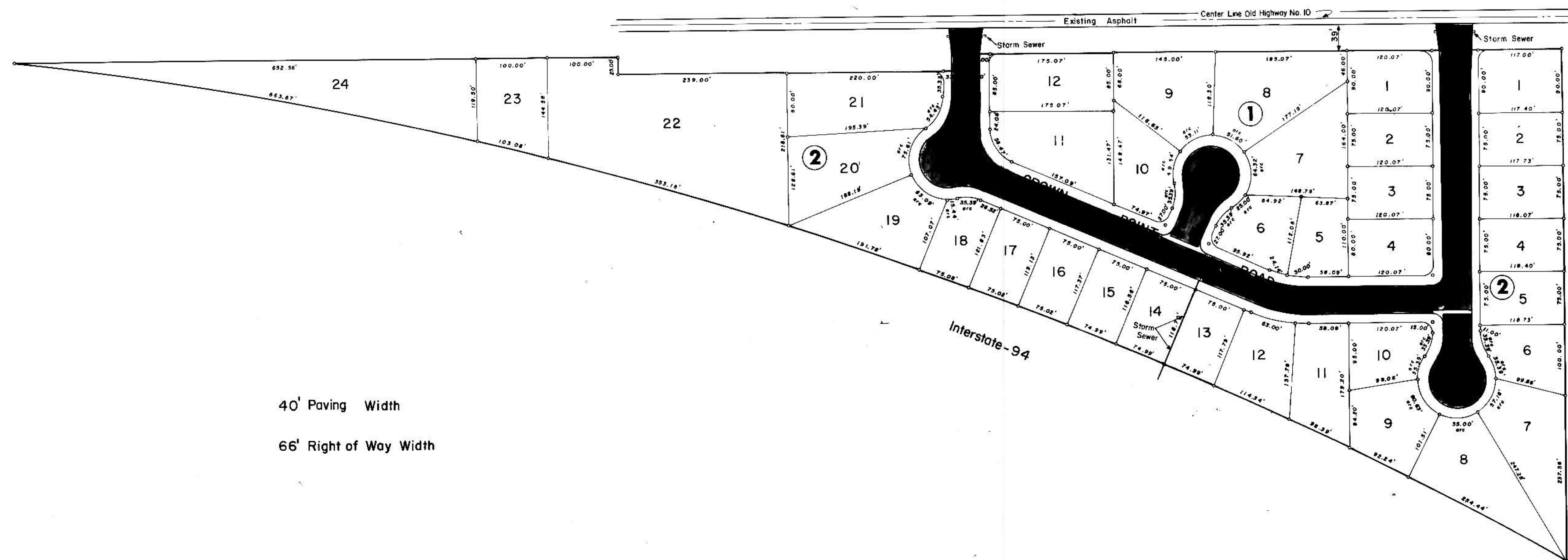
PROJECT LAYOUT

AREA NO. 8

REPLAT OF CROWN POINT SUBDIVISION



Scale: 1"=100'
December, 1977



40' Paving Width

66' Right of Way Width

CIVIL ENGINEERING LAND PLANNING LAND SURVEYING

SWENSON, HAGEN & CO. P.C.

Consulting Engineers

PO BOX 1135, 909 BASIN AVENUE
BISMARCK, NORTH DAKOTA 58501
701-223-2600