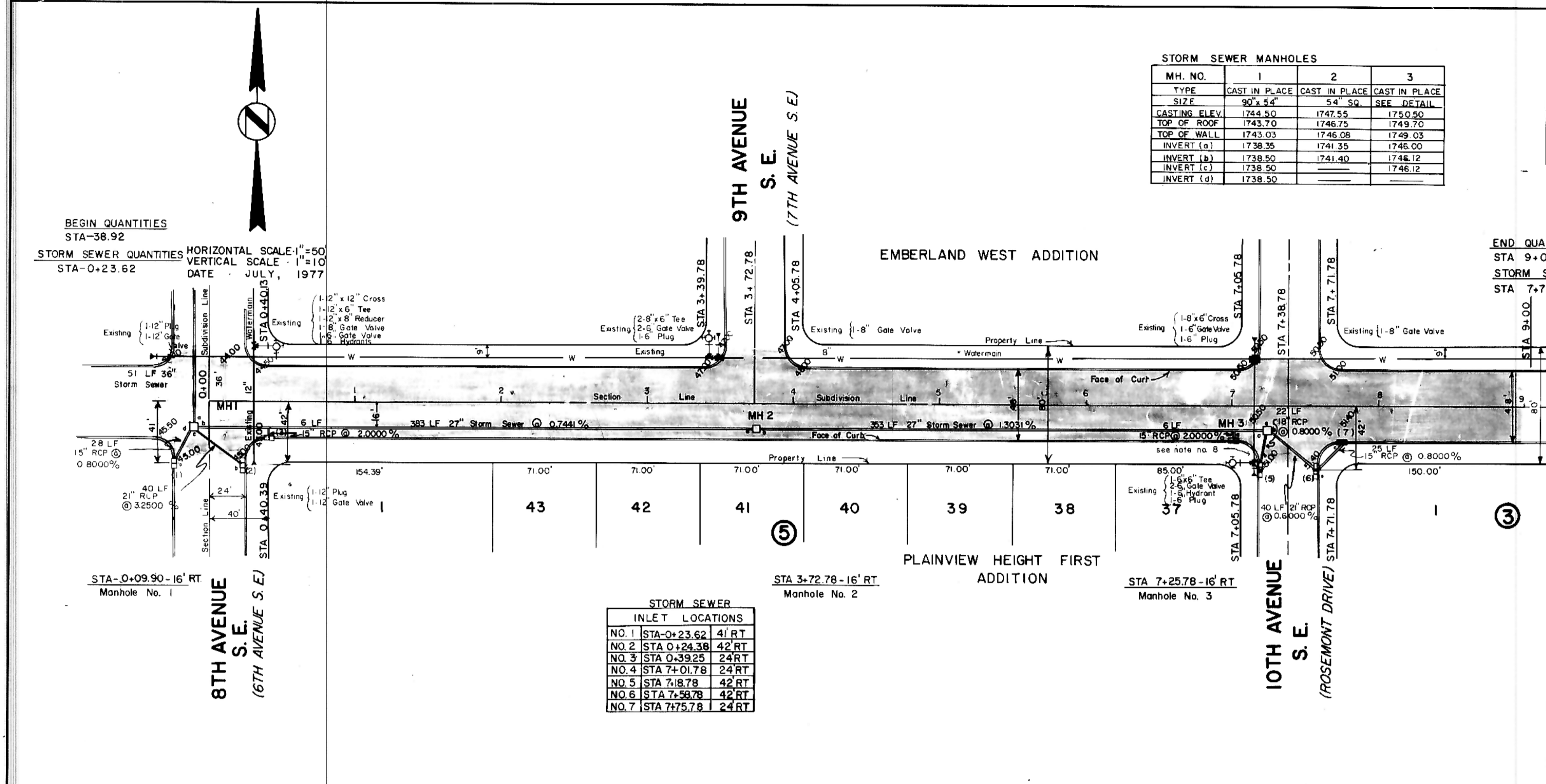


PLAN
 SURVEIL: _____
 KOTTID: _____
 NOTE BOOK: _____
 RT. OF WAY CHECKED: _____
 No. _____

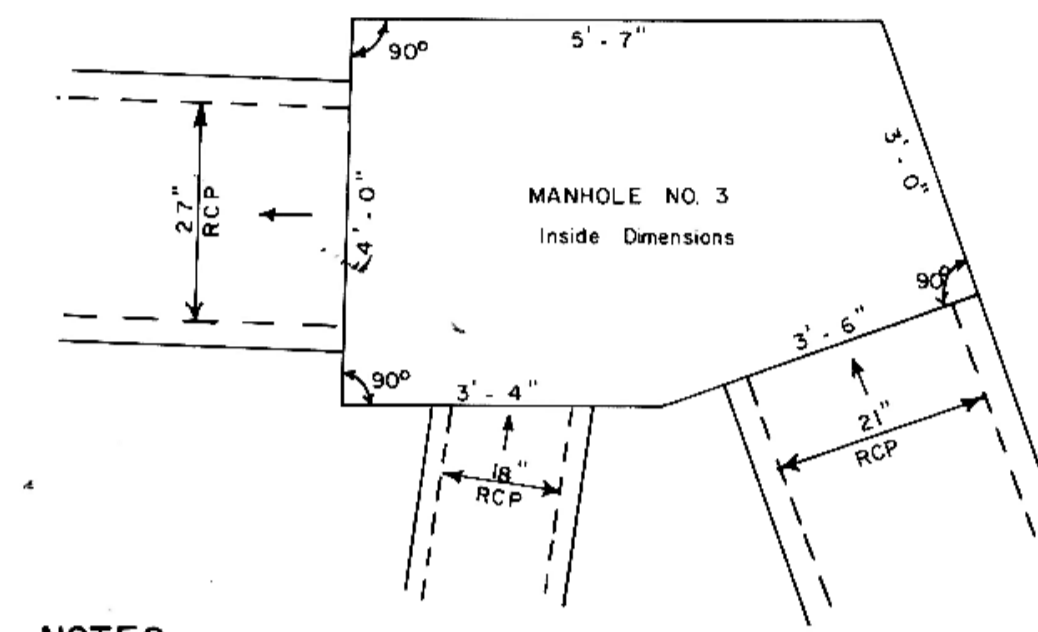
PROFILE
 SURVEIL: _____
 KOTTID: _____
 NOTE BOOK: _____
 RT. OF WAY CHECKED: _____
 No. _____



STORM SEWER MANHOLES			
MH. NO.	1	2	3
TYPE	CAST IN PLACE	CAST IN PLACE	CAST IN PLACE
SIZE	90" x 54"	54" x 50"	SEE DETAIL
CASTING ELEV.	1744.50	1747.55	1750.50
TOP OF ROOF	1743.70	1746.75	1749.70
TOP OF WALL	1743.03	1746.08	1749.03
INVERT (a)	1738.35	1741.35	1745.00
INVERT (b)	1738.50	1741.40	1745.12
INVERT (c)	1738.50	1741.40	1745.12
INVERT (d)	1738.50	1741.40	1745.12

STORM SEWER INLETS						
INLETS NO.	1	2	3	4	5	6
TYPE	B	C	B	C	C	B
CURB ELEV.	1745.00	1745.00	1745.00	1750.50	1751.00	1751.40
GUTTER ELEV.	1744.35	1744.35	1744.35	1749.85	1750.35	1750.75
TOP OF ROOF	1743.81	1743.81	1743.81	1749.31	1749.81	1750.21
INVERT (a)	1738.78	1739.80	1739.00	1746.00	1746.30	1746.50
INVERT (b)						
LENGTH PC. SEC.						

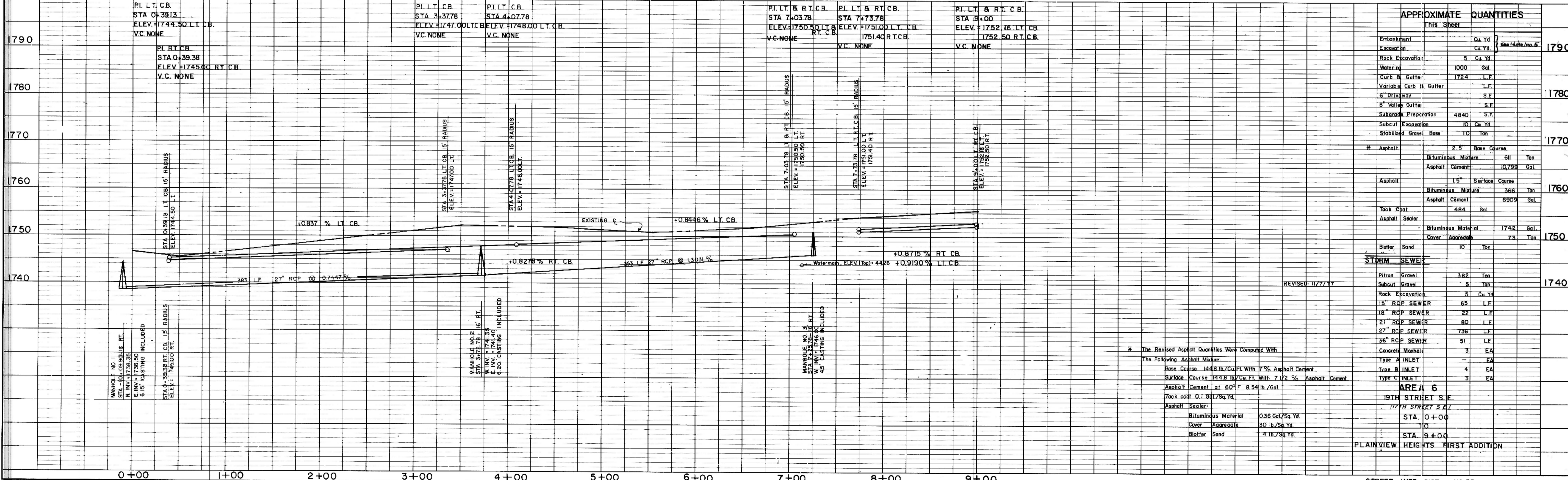
MH NO.	SCHEMATIC (Arrows indicate main flow)	Inside Dimensions A	Dimensions B
1.		7'-6"	4'-6"
2.		4'-6"	4'-6"
3.	SEE DETAIL		



LEGEND	
---	EXISTING
---	50' LT
---	50' RT
---	EXISTING WATERMAIN
---	HYDRANTS
---	GATE VALVES
---	TEES
---	PLUG
---	SANITARY SEWER
---	SAN. SEWER MH
---	PROPOSED
---	TYPE A INLET
---	TYPE B INLET
---	TYPE C INLET
---	STORM SEWER
---	STORM SEWER MH

- NOTES:
- Sewer and Water Improvements as shown on plans are existing as per date of street improvement plans. Existing Sewer and Water as per "Consolidated Water and Sewer Improvement District No. 23."
 - All curb and gutter radii are 15 feet at face of curb unless otherwise stated.
 - Proposed grades are to top of curb unless otherwise stated.
 - City Engineer shall confirm location of variable curb and gutter for driveways prior to construction of said curb.
 - Streets have been graded to within five tenths of a foot of the proposed grades and final grading shall be considered as a one lump sum item for Area No. 6.
 - Stationing for inlets refers to face of curb and center of inlet.
 - Backfill shall be Class B.
 - Contractor to uncover existing watermain and verify elevation.

STORM SEWER INLET LOCATIONS	
NO. 1	STA 0+23.62 4' RT
NO. 2	STA 0+24.38 42' RT
NO. 3	STA 0+39.25 24' RT
NO. 4	STA 7+01.78 24' RT
NO. 5	STA 7+8.78 42' RT
NO. 6	STA 7+58.78 42' RT
NO. 7	STA 7+75.78 24' RT



APPROXIMATE QUANTITIES		1790
This Sheet	See Other Sheets	
Embankment	Cu. Yd.	
Excavation	Cu. Yd.	
Rock Excavation	5 Cu. Yd.	
Watering	1000 Gal.	
Curb & Gutter	1724 L.F.	
Variable Curb & Gutter	L.F.	
6" Driveway	S.F.	
8" Valley Gutter	S.F.	
Subgrade Preparation	4840 S.Y.	
Subcut Excavation	10 Cu. Yd.	
Stabilized Gravel Base	10 Ton	
Asphalt	2.5" Base Course	
Bituminous Mixture	611 Ton	
Asphalt Cement	10,799 Gal.	
Asphalt	1.5" Surface Course	
Bituminous Mixture	368 Ton	
Asphalt Cement	6909 Gal.	
Tack Coat	484 Gal.	
Asphalt Sealer	1742 Gal.	
Bituminous Material	1742 Gal.	
Cover Aggregate	73 Ton	
Blotter Sand	10 Ton	
STORM SEWER		
Pitrun Gravel	382 Ton	
Subcut Gravel	5 Ton	
Rock Excavation	5 Cu. Yd.	
15" RCP SEWER	65 L.F.	
18" RCP SEWER	22 L.F.	
21" RCP SEWER	80 L.F.	
27" RCP SEWER	736 L.F.	
36" RCP SEWER	51 L.F.	
Concrete Manholes	3 EA	
Type A INLET	4 EA	
Type B INLET	4 EA	
Type C INLET	3 EA	
* The Revised Asphalt Quantities Were Computed With The Following Asphalt Mixtures:		
Base Course	144 lb./Cu. Ft. With 7% Asphalt Cement	
Surface Course	145 lb./Cu. Ft. With 7 1/2% Asphalt Cement	
Asphalt Cement	at 60°F 8.54 lb./Gal.	
Tack Coat	0.1 Gal./Sq. Yd.	
Asphalt Sealer:		
Bituminous Material	0.36 Gal./Sq. Yd.	
Cover Aggregate	30 lb./Sq. Yd.	
Blotter Sand	4 lb./Sq. Yd.	
AREA 6		
19TH STREET S.E.		
17TH STREET S.E.		
STA. 0+00		
STA. 9+00		
PLAINVIEW HEIGHTS FIRST ADDITION		