

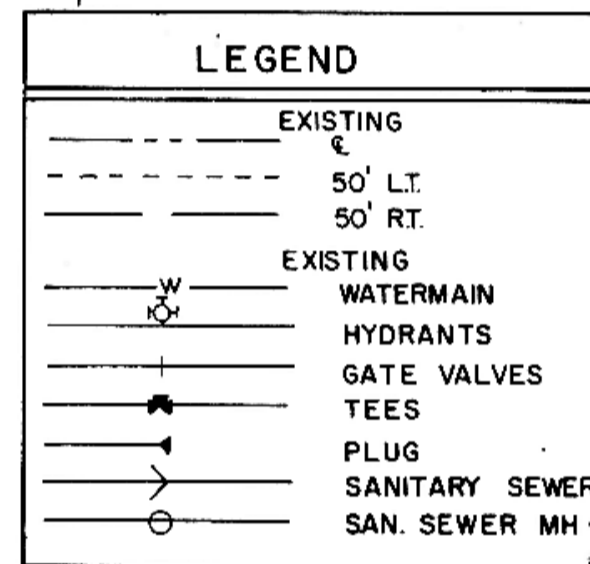
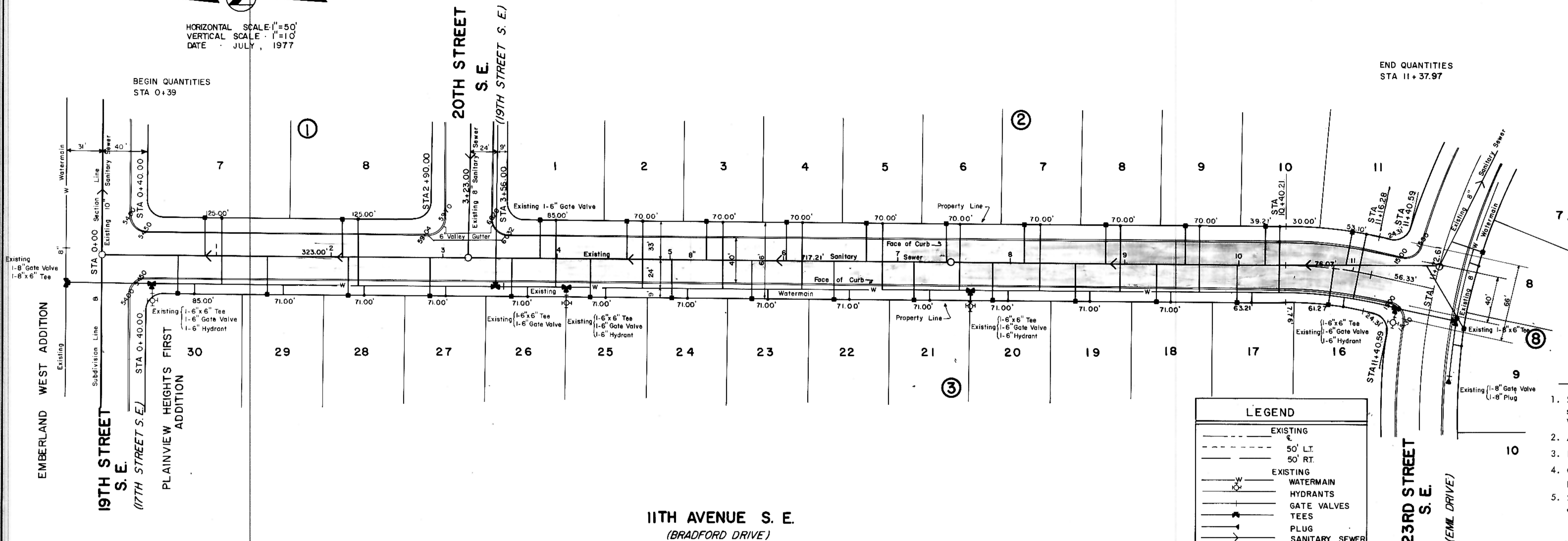
HORIZONTAL SCALE 1"=50'
 VERTICAL SCALE 1"=10'
 DATE JULY, 1977

BEGIN QUANTITIES
 STA 0+39

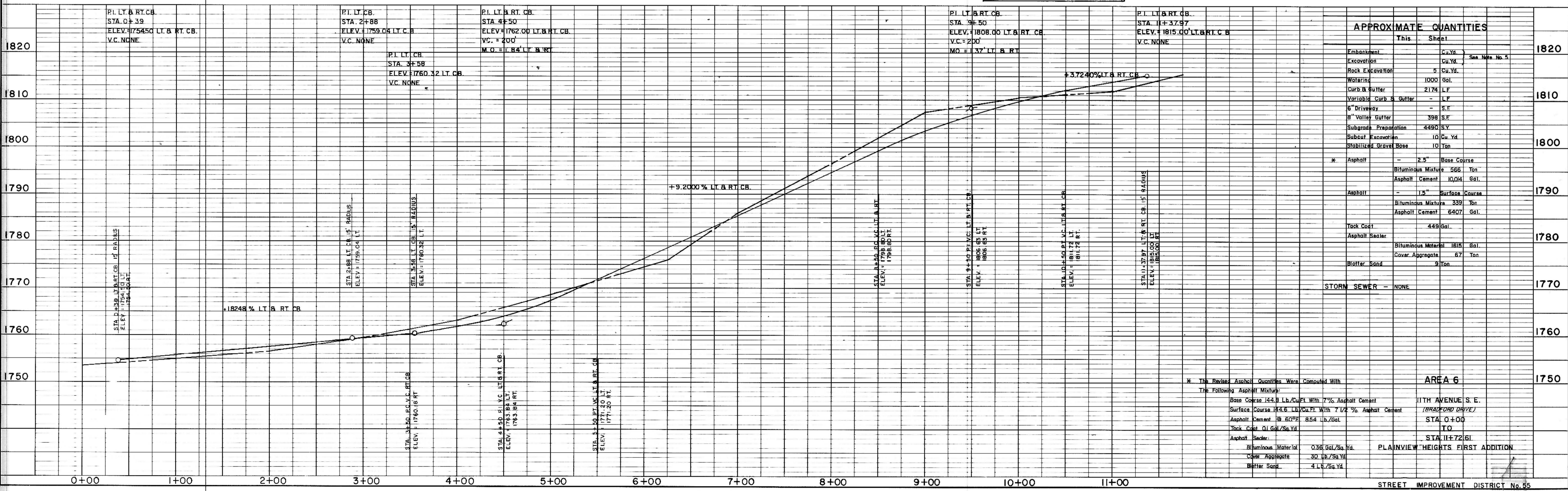
END QUANTITIES
 STA 11+37.97

PLAN
 SURVEIL
 NOTE BOOK
 NO. OF WAY CHECKED

PROFILE
 SURVEIL
 NOTE BOOK
 NO. OF VERTICAL CURVES CHECKED



- NOTES:
- Sewer and Water Improvements as shown on plans are existing as per date of street improvement plans. Existing Sewer and Water as per "Consolidated Water and Sewer Improvement District No. 23."
 - All curb and gutter radii are 15 feet at face of curb unless otherwise stated.
 - Proposed grades are to top of curb unless otherwise stated.
 - City Engineer shall confirm location of variable curb and gutter for driveways prior to construction of said curb.
 - Streets have been graded to within five tenths of a foot of the proposed grades and final grading shall be considered as a one lump sum item for Area No. 6.



APPROXIMATE QUANTITIES		
This	Sheet	
Embankment	0 Cu. Yd.	1820
Excavation	5 Cu. Yd.	
Rock Excavation	5 Cu. Yd.	
Watering	1000 Gal.	
Curb & Gutter	2174 L.F.	1810
Variable Curb & Gutter	1 L.F.	
6" Driveway	5 S.F.	
8" Valley Gutter	398 S.F.	
Subgrade Preparation	4490 S.Y.	
Subcut Excavation	10 Cu. Yd.	1800
Stabilized Gravel Base	10 Ton	
* Asphalt	2.5" Base Course	
	Bituminous Mixture 566 Ton	
	Asphalt Cement 10,014 Gal.	
Asphalt	1.5" Surface Course	1790
	Bituminous Mixture 339 Ton	
	Asphalt Cement 6407 Gal.	
Tack Coat	449 Gal.	
Asphalt Sealer	1618 Gal.	1780
	Cover Aggregate 67 Ton	
Blotter Sand	9 Ton	
STORM SEWER	NONE	1770

* The Revised Asphalt Quantities Were Computed With The Following Asphalt Mixtures:

Course	Material	Quantity
Base Course	144.8 Lb./Cu.Ft. With 7% Asphalt Cement	
Surface Course	143.6 Lb./Cu.Ft. With 7 1/2% Asphalt Cement	
Asphalt Cement	8.54 lb./Gal.	
Tack Coat	0.1 Gal./Sq. Yd.	
Asphalt Sealer	0.36 Gal./Sq. Yd.	
Cover Aggregate	30 lb./Sq. Yd.	
Blotter Sand	4 Lb./Sq. Yd.	

AREA 6
 I11TH AVENUE S.E.
 (BRADFORD DRIVE)
 STA 0+00 TO 11+37.97

K&M PLATE 1, PLAN-PROFILE
 KEUFEL & ESSER CO.
 46 7024 MADE IN U.S.A.

STREET IMPROVEMENT DISTRICT No. 55
 MANDAN, NORTH DAKOTA
 SHEET NO. 6-3
 DATE REVISED-MARCH, 1978