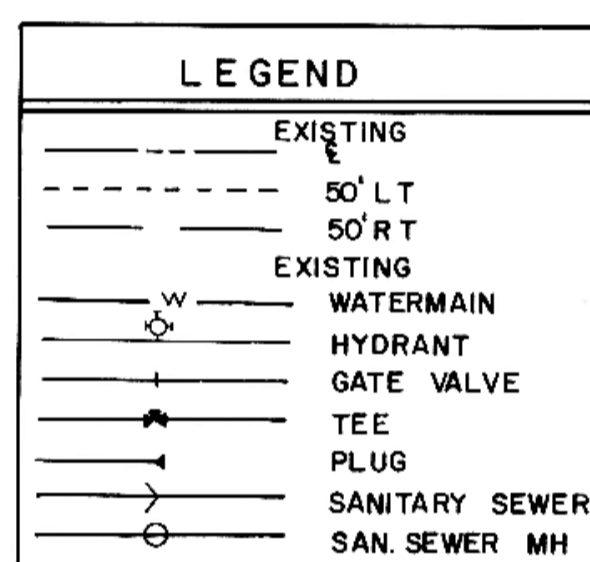
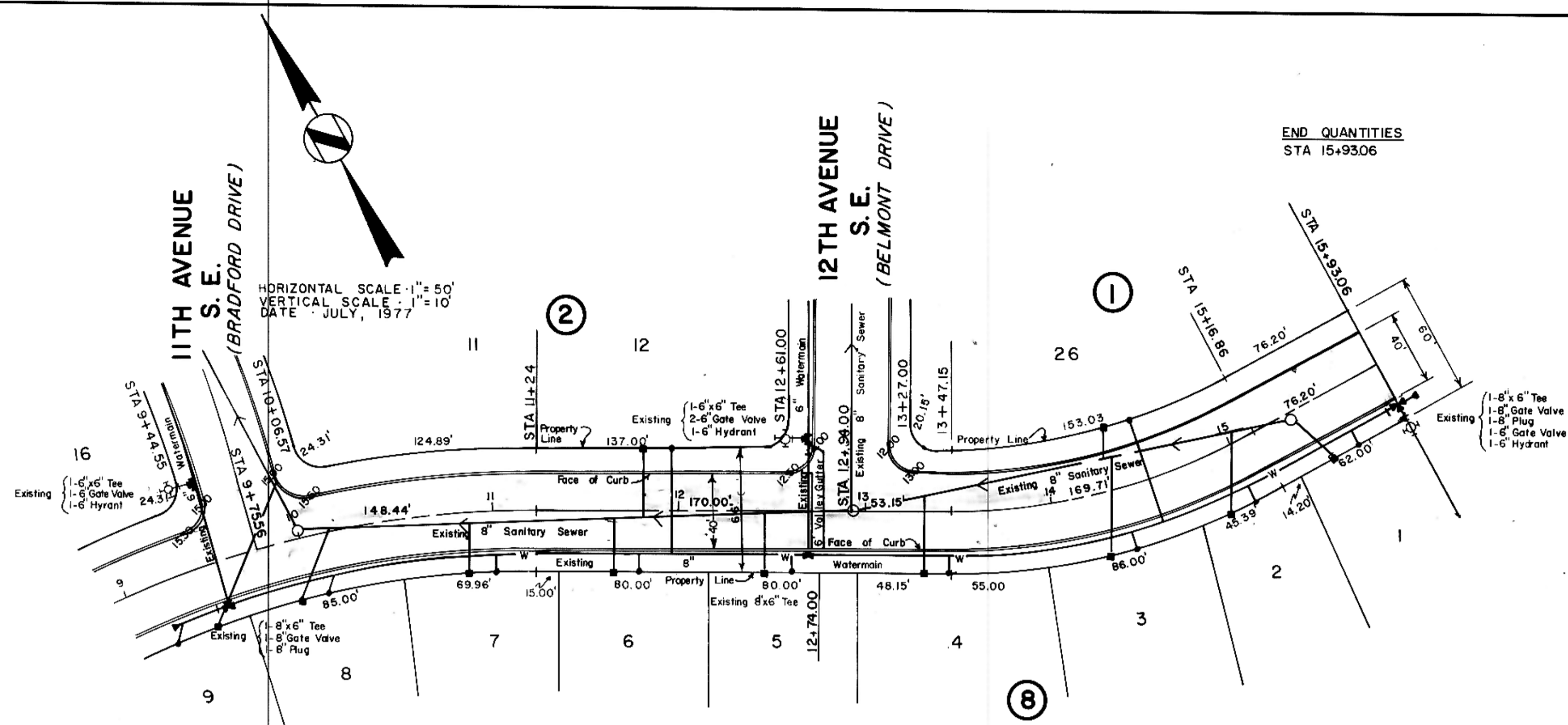


PLAN  
 NOTE BOOK  
 No.

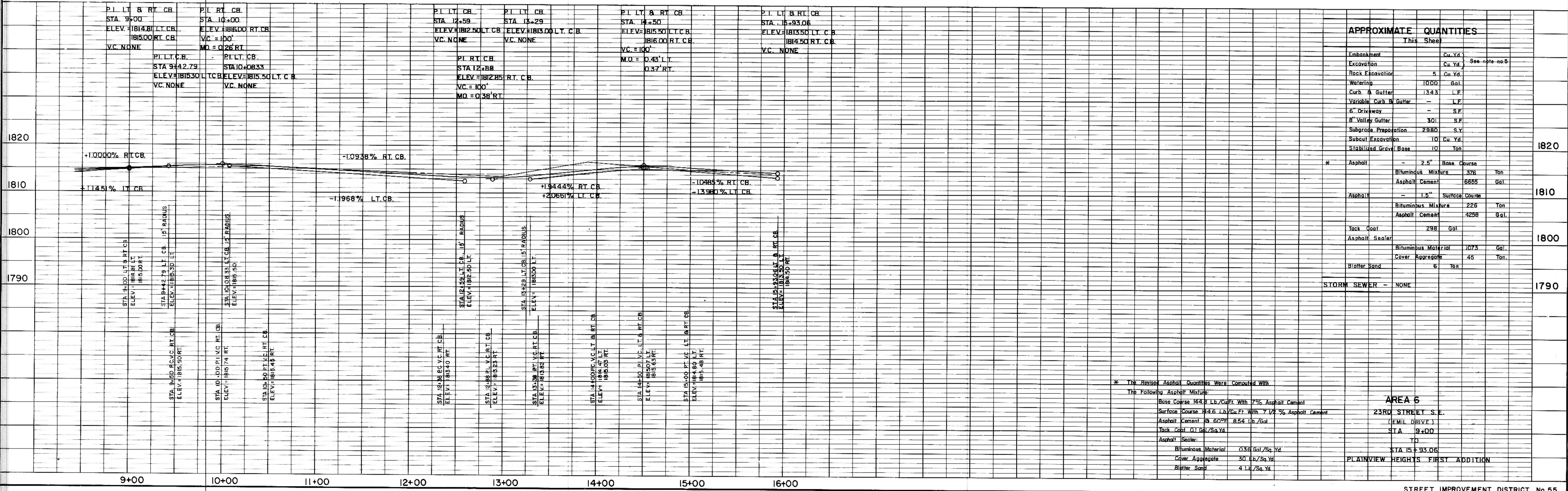
PROFILE  
 NOTE BOOK  
 No.



NOTES:

- Sewer and Water Improvements as shown on plans are existing as per date of street improvement plans. Existing Sewer and Water as per "Consolidated Water and Sewer Improvement District No. 23."
- All curb and gutter radii are 15 feet at face of curb unless otherwise stated.
- Proposed grades are to top of curb unless otherwise stated.
- City Engineer shall confirm location of variable curb and gutter for driveways prior to construction of said curb.
- Streets have been graded to within five tenths of a foot of the proposed grades and final grading shall be considered as a one lump sum item for Area No. 6.

23RD STREET S.E.  
 (EMIL DRIVE)



APPROXIMATE QUANTITIES

|                        | This Sheet |                         |
|------------------------|------------|-------------------------|
| Embankment             | —          | Cu. Yd.                 |
| Excavation             | —          | Cu. Yd.                 |
| Rock Excavation        | 5          | Cu. Yd.                 |
| Watering               | 10000      | Gal.                    |
| Curb & Gutter          | 1343       | L.F.                    |
| Variable Curb & Gutter | —          | L.F.                    |
| 4" Driveway            | —          | S.F.                    |
| 8" Valley Gutter       | 301        | S.F.                    |
| Subgrade Preparation   | 2880       | S.Y.                    |
| Subcut Excavation      | 10         | Cu. Yd.                 |
| Stabilized Gravel Base | 10         | Ton                     |
| * Asphalt              | —          | Base Course             |
|                        | —          | 2.5" Bituminous Mixture |
|                        | —          | Asphalt Cement          |
| Asphalt                | —          | 1.5" Surface Course     |
|                        | —          | Bituminous Mixture      |
|                        | —          | Asphalt Cement          |
| Tack Coat              | 298        | Gal.                    |
| Asphalt Sealer         | —          | Bituminous Material     |
|                        | —          | Cover Aggregate         |
|                        | —          | Blotter Sand            |
| STORM SEWER            | NONE       |                         |

\* The Revised Asphalt Quantities Were Computed With The Following Asphalt Mixture:  
 Base Course 143.8 Lb./Cu.Ft. With 7% Asphalt Cement  
 Surface Course 143.6 Lb./Cu.Ft. With 7 1/2% Asphalt Cement  
 Asphalt Cement @ 60°F 8.54 Lb./Gal.  
 Tack Coat 0.1 Gal./Sq.Yd.  
 Asphalt Sealer  
 Bituminous Material 0.32 Gal./Sq.Yd.  
 Cover Aggregate 30 Lb./Sq.Yd.  
 Blotter Sand 4 Lb./Sq.Yd.

AREA 6  
 23RD STREET S.E.  
 (EMIL DRIVE)  
 STA 9+00  
 TO  
 STA 15+93.06  
 PLAINVIEW HEIGHTS FIRST ADDITION