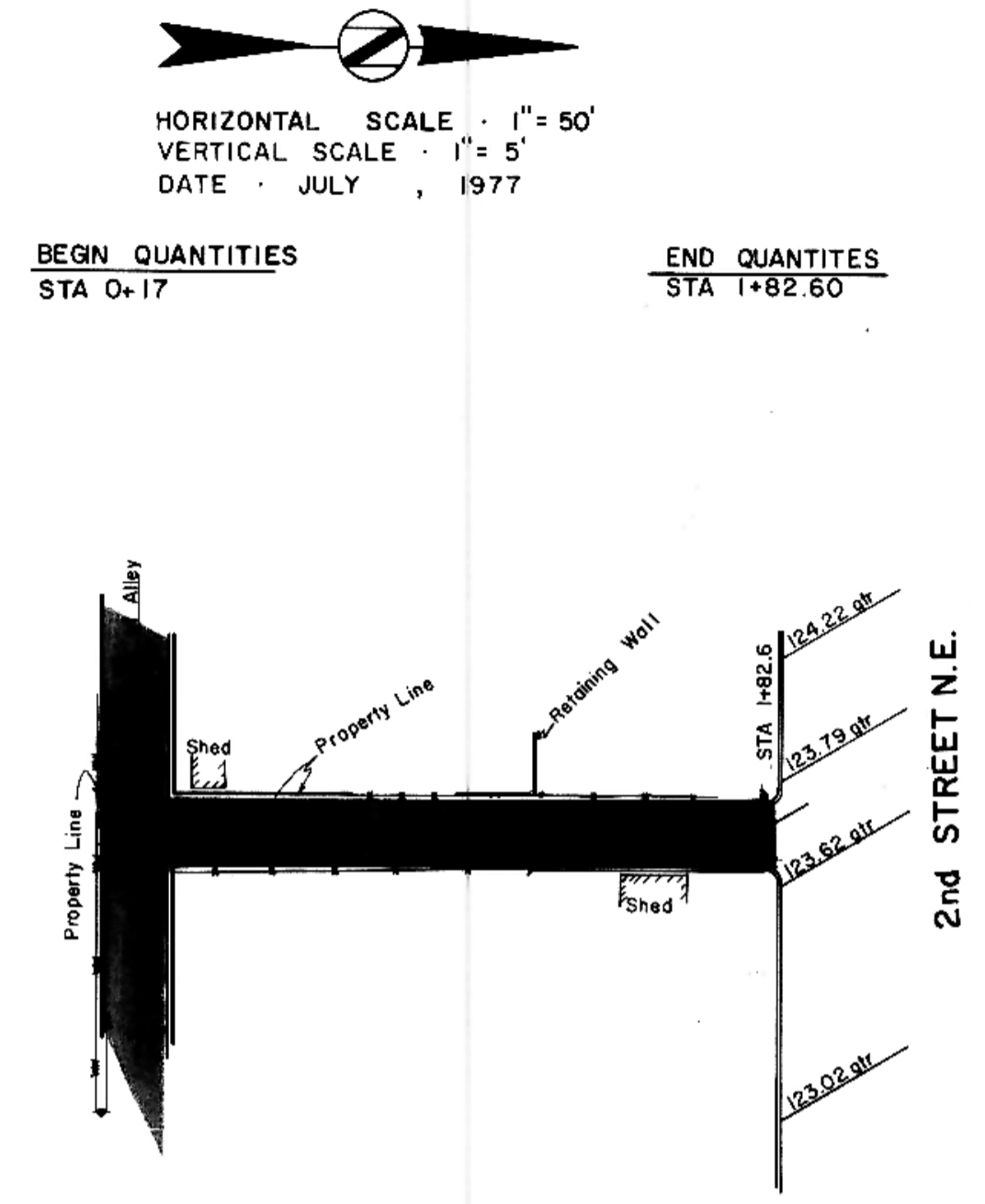
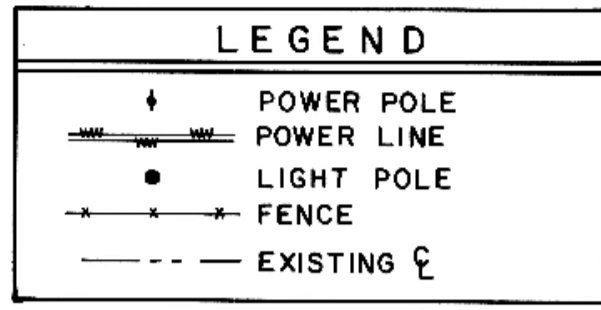
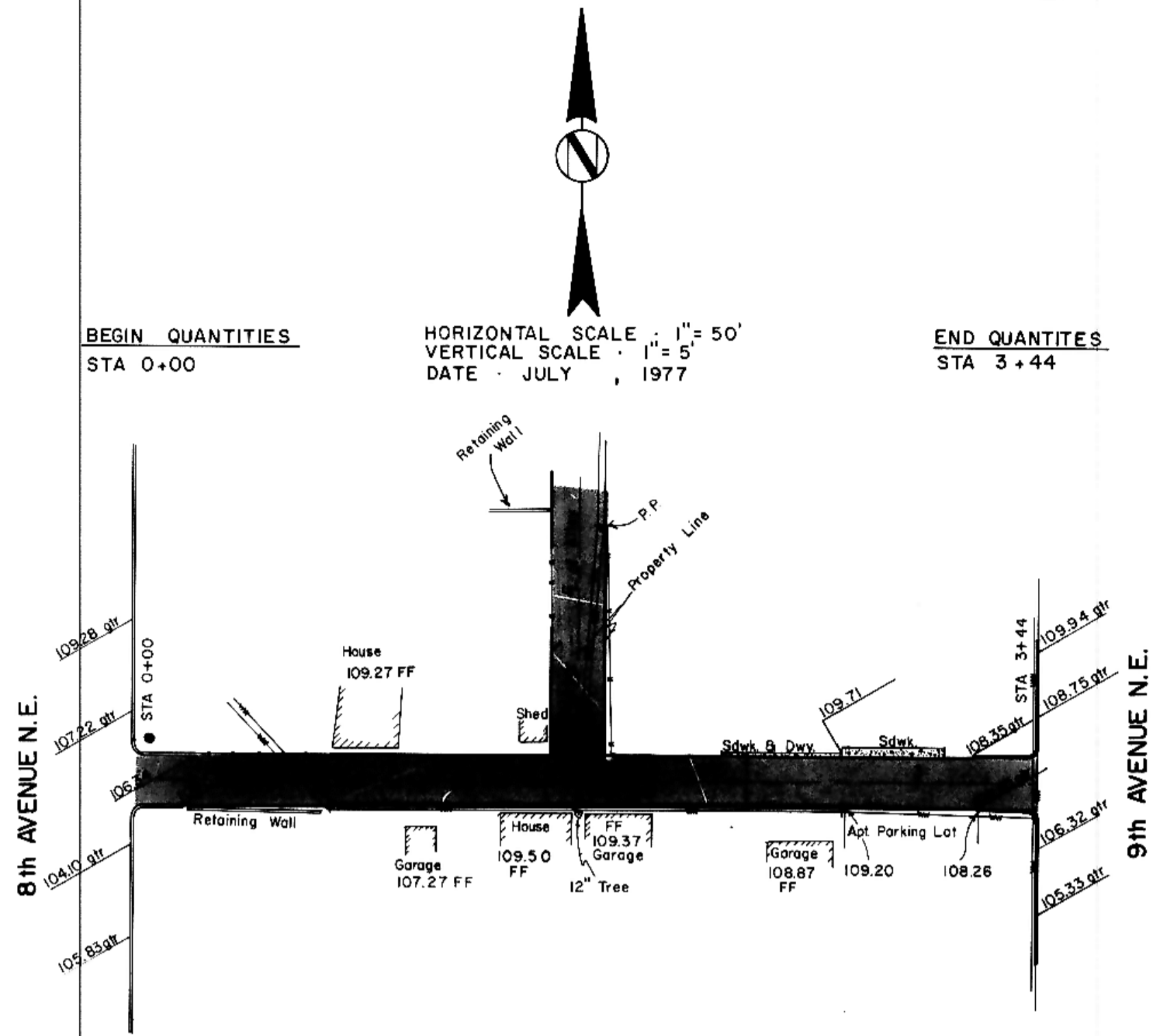
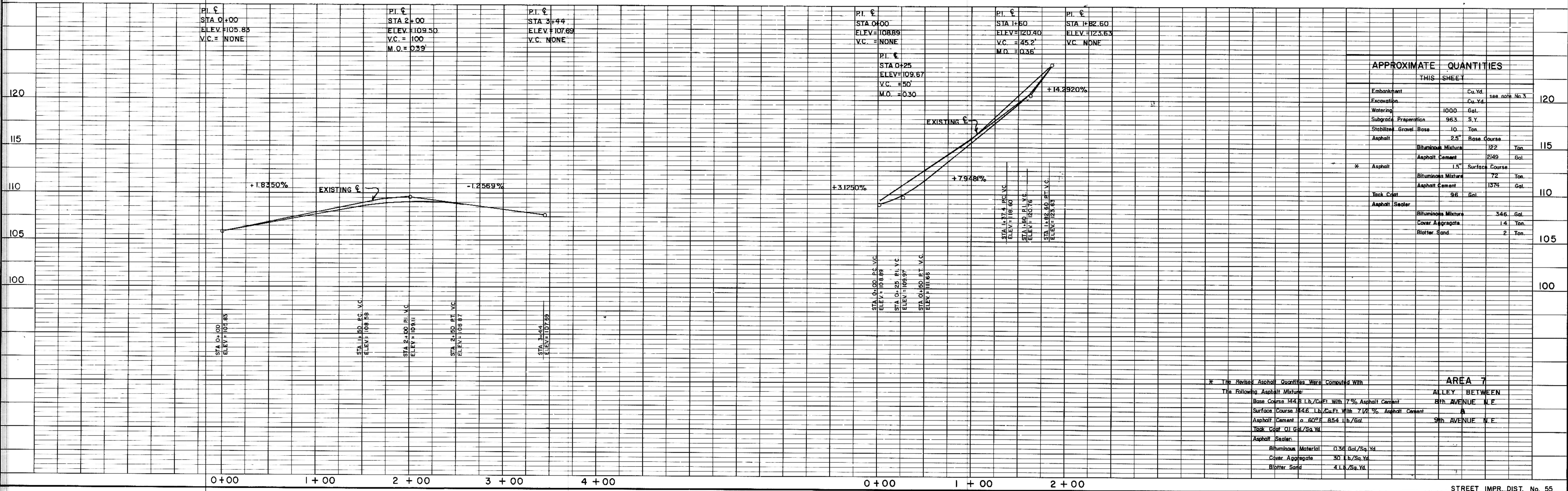


DATE: \_\_\_\_\_  
 BY: \_\_\_\_\_  
 SURVEYED: \_\_\_\_\_  
 PLOTTED: \_\_\_\_\_  
 NOTE BOOK: \_\_\_\_\_  
 NO. \_\_\_\_\_

DATE: \_\_\_\_\_  
 BY: \_\_\_\_\_  
 SURVEYED: \_\_\_\_\_  
 PLOTTED: \_\_\_\_\_  
 NOTE BOOK: \_\_\_\_\_  
 NO. \_\_\_\_\_



- NOTES:
1. An inverted crown shall be constructed with a cross slope of 3/8" per foot.
  2. Proposed grades are to the centerline of the paving.
  3. Grading of alley shall be considered as a one lump sum item.
  4. Elevations are referenced to top of hydrant on the corner of 1st Street NE and 8th Avenue NE. Elevation = 100



APPROXIMATE QUANTITIES			
THIS SHEET			
Embankment	Cu. Yd.		120
Excavation	Cu. Yd.	see note No. 3	
Watering	1000 Gal.		
Subgrade Preparation	963 S.Y.		
Stabilized Gravel Base	10 Ton		
Asphalt	2.5" Base Course		
Bituminous Mixture	182 Ton		115
Asphalt Cement	249 Gal		
Asphalt	1.5" Surface Course		
Bituminous Mixture	72 Ton		110
Asphalt Cement	1374 Gal		
Tank Coat	96 Gal		
Asphalt Sealer			
Bituminous Mixture	346 Gal		105
Cover Aggregate	14 Ton		
Blotter Sand	2 Ton		100

\* The Revised Asphalt Quantities Were Computed With The Following Asphalt Mixture:

AREA 7  
 ALLEY BETWEEN 8th AVENUE N.E. and 9th AVENUE N.E.

Base Course 144.8 Lb./Cu.Ft. With 7% Asphalt Cement  
 Surface Course 144.6 Lb./Cu.Ft. With 7.12% Asphalt Cement  
 Asphalt Cement @ 60°F 854 lb./Gal  
 Tank Coat 0.1 Gal/Sq. Yd.  
 Asphalt Sealer  
 Bituminous Material 0.36 Gal/Sq. Yd.  
 Cover Aggregate 30 lb./Sq. Yd.  
 Blotter Sand 4 L./Sq. Yd.