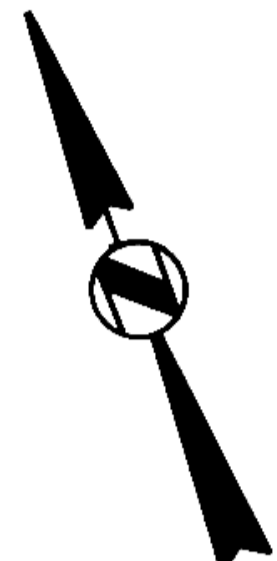
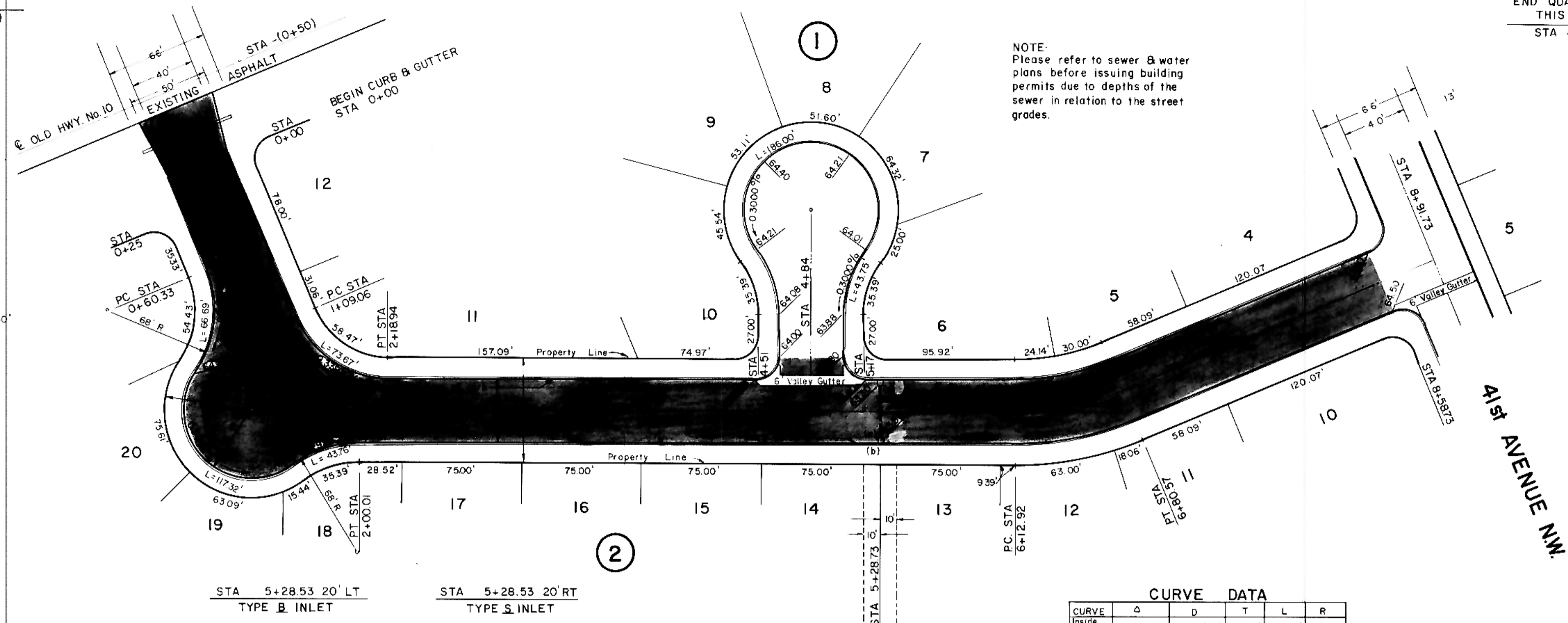


BEGIN QUANTITIES
THIS SHEET
STA - (0+39)

END QUANTITIES
THIS SHEET
STA 8+56.73



HORIZONTAL SCALE 1" = 50'
VERTICAL SCALE 1" = 5'
DATE: DECEMBER, 1977



NOTE:
Please refer to sewer & water plans before issuing building permits due to depths of the sewer in relation to the street grades.

- NOTES**
- Proposed Sewer and Water improvements for Crown Point Road are shown on plans for "Consolidated Sewer and Water Improvement District No. 25". Said Sewer and Water improvements shall be installed prior to any street improvements except earthwork and contractor shall be responsible for the preservation of sewer and water improvements during construction.
 - Proposed grades are to the top of the curb unless otherwise stated.
 - All curb and gutter radii are 15 feet at the face of curb unless otherwise stated.
 - All backfill on this sheet shall be Class "B".
 - Earthwork quantities include the removal of topsoil. Topsoil may be used as fill in the embankment area outside the right-of-way. Embankment quantities shown include an assumed 20% shrinkage factor.
 - The following is the asphalt mixture that was used to compute the quantities. This is not necessarily the design mix that will be used:
 Base Course 144.8 lb/cu. ft. with 7% asphalt cement.
 Surface Course 144.6 lb/cu. ft. with 7 1/2% asphalt cement.
 Asphalt Cement at 60° F. = 8.54 lbs./gal.
 Tack Coat 0.1 gal./sq. yd.
 Asphalt Sealer Bituminous Material 0.36 gal./sq. yd.
 Cover Aggregate 30 lbs./sq. yd.

PLAN

DATE	
BY	
REVISION	
NO.	

LEGEND

Existing	—
58' LT	- - - -
58' RT	- - - -

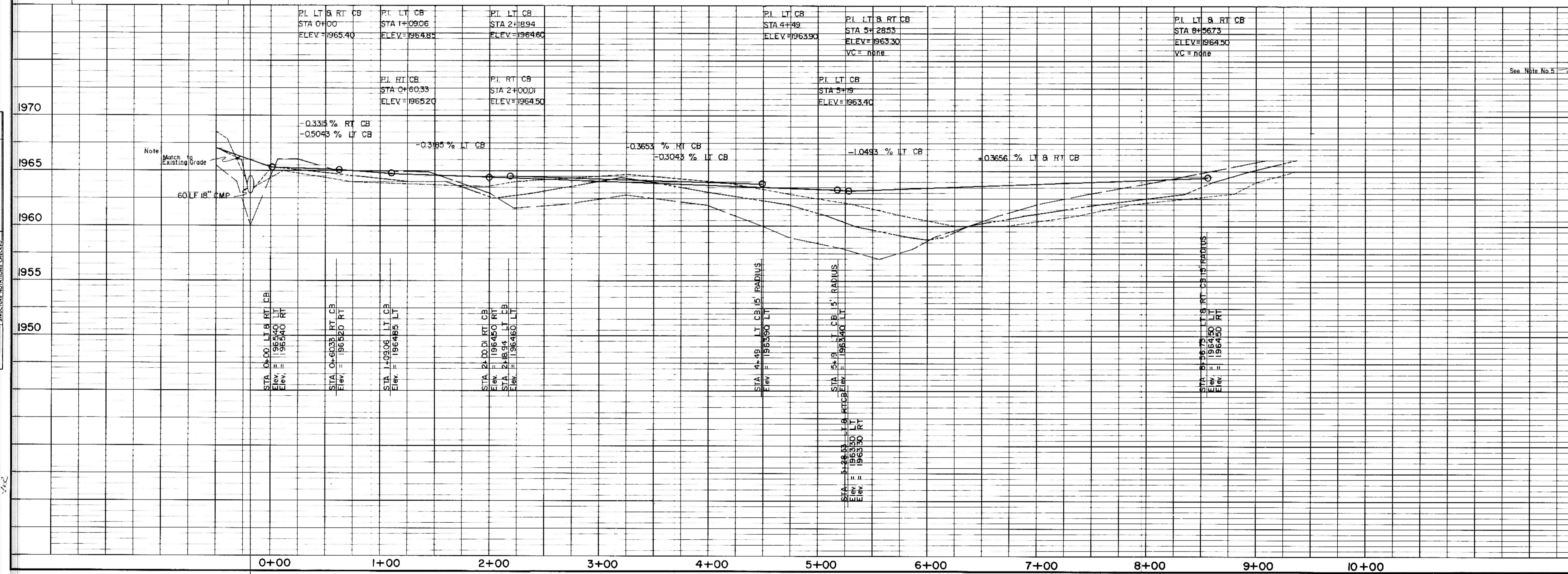
CURVE DATA

CURVE	Δ	D	T	L	R
Inside Curb	38° 40' 13"	3072'	59.48'	151.02'	
A	23° 00' 00"	344' 00' 00"	34.79'	67.65'	171.02'
Outside Curb	30° 20' 56"	3886'	75.78'	191.02'	

CROWN POINT ROAD NW.

PROFILE

DATE	
BY	
REVISION	
NO.	



**APPROXIMATE QUANTITIES
THIS SHEET**

Item	Quantity	Unit
Embankment	4480	CuYd
Excavation	712	CuYd
Rock Excavation	5	CuYd
Watering	1000	Gal
Curb & Gutter	1753	LF
Variable Curb & Gutter		
6" Driveway		
B Valley Gutter	380	SF
Subgrade Preparation	4002	SF
Subsoil Excavation	10	CuYd
Stabilized Gravel Base	10	Ton
Asphalt	2.5"	Base Course
Bituminous Mixture	505	Ton
Asphalt Cement	8910	Gal
Asphalt	2.0"	Surface Course
Bituminous Mixture	401	Ton
Asphalt Cement	7823	Gal
Tack Coat	400	Gal
Asphalt Sealer	1440	Gal
Bituminous Material	50	Ton
Cover Aggregate	8	Ton
Storm Sewer	50	LF
8" C.M.P.		

AREA 8
CROWN POINT ROAD NW
STA 0+00
TO
STA 8+56.73
REPLAT OF CROWN POINT SUBDIVISION