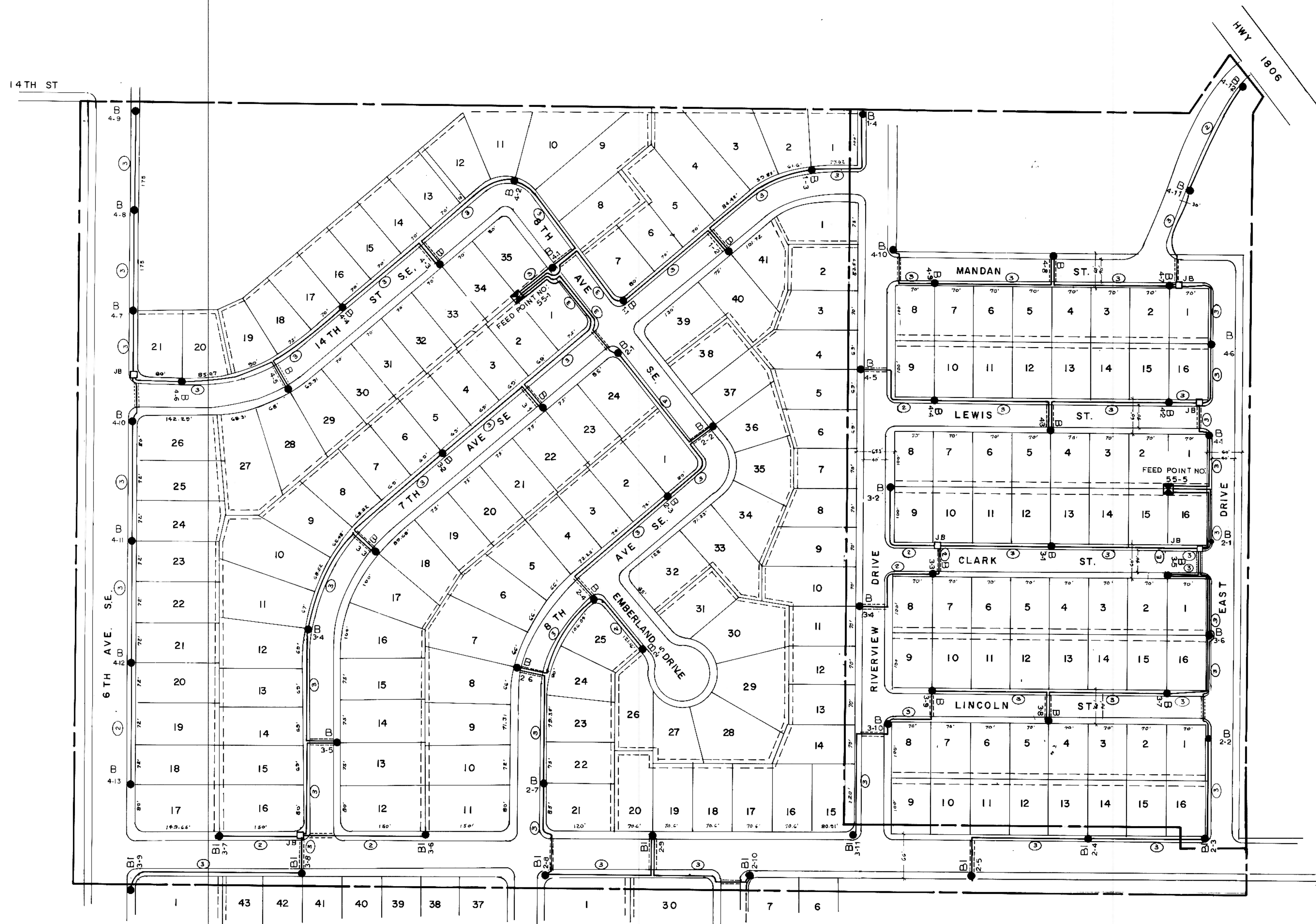
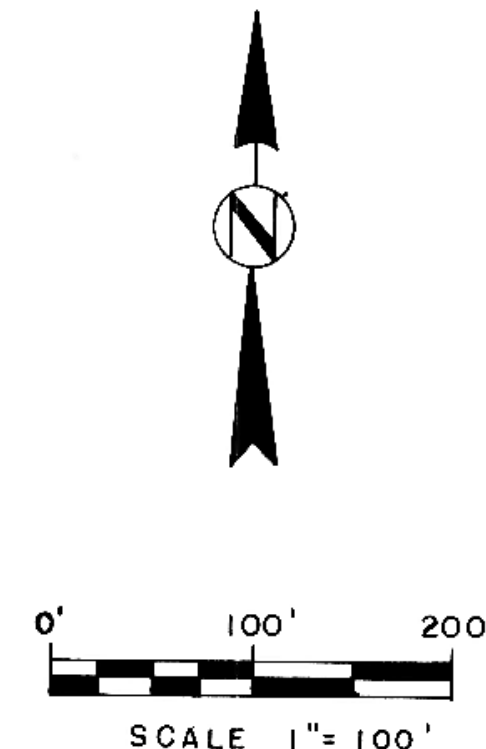


# UNIT 1      UNIT 5



EMBERLAND WEST ADDITION

RIPPEL'S SECOND SUBDIVISION



### LEGEND - SYMBOLS

- STREET LIGHT UNIT
- LIGHT UNIT EXISTING OR SHOWN ON ANOTHER SHEET
- JUNCTION BOX
- ⊠ FEEDPOINT
- CIRCUIT CONDUCTOR - UNDERGROUND
- CIRCUIT CONDUCTOR - IN CONDUIT
- ③ DESIGNATES NUMBER OF CONDUCTORS
- B ← STREET LIGHT TYPE
- | - | CIRCUIT NUMBER
- B → BRACKET ARM EXTENDS THIS DIRECTION

NOTE:  
LOT WIDTHS MUST BE VERIFIED. USE FOR STAKING INFO ONLY.

**SCHMIT, SMITH & RUSH**  
CONSULTING ENGINEERS  
MINOT      NORTH DAKOTA