

LEGEND	
EXISTING	
	50' LT
	50' RT
EXISTING	
	WATERMAIN
	HYDRANTS
	GATE VALVES
	TEE
	PLUG
	SANITARY SEWER
	SAN. SEWER MH
PROPOSED	
	TYPE A INLET
	TYPE B INLET
	TYPE C INLET
	STORM SEWER
	STORM SEW. MH

Note: Install a 1 1/2" - 30" barrel for adjusting the casting elevation for manhole no. 1

STORM SEWER MANHOLES			
MH. NO.	TYPE	CAST IN PLACE	CAST IN PLACE
1	1	2	3
CASTING ELEV.	1739.97	1726.21	1716.30
TOP OF ROOF	1737.86	1725.41	1715.26
TOP OF WALL	1737.19	1724.74	1714.59
INVERT (a)	1732.66	1720.20	1708.00
INVERT (b)	1732.66	1720.42	1698.78
INVERT (c)		1720.10	1696.38
INVERT (d)		1720.26	

MH. NO.	(Arrow indicate main line flow)	Inside Dimensions	Dimensions
		A	B
1		4'-6"	4'-6"
2		4'-6"	4'-6"
3		6'-0"	6'-0"

STORM SEWER INLETS				
INLET NO.	1	2	3	4
TYPE	A	A	A	A
CURB ELEV.	1725.55	1725.55	1716.50	1716.50
GUTTER ELEV.	1724.90	1724.90	1715.85	1715.85
TOP OF ROOF	1724.36	1724.36	1715.31	1715.31
INVERT (a)	1720.53	1720.53	1698.85	1698.20
LENGTH P.C. SEC.	4'-0"	4'-0"	12'-5"	13'-8"

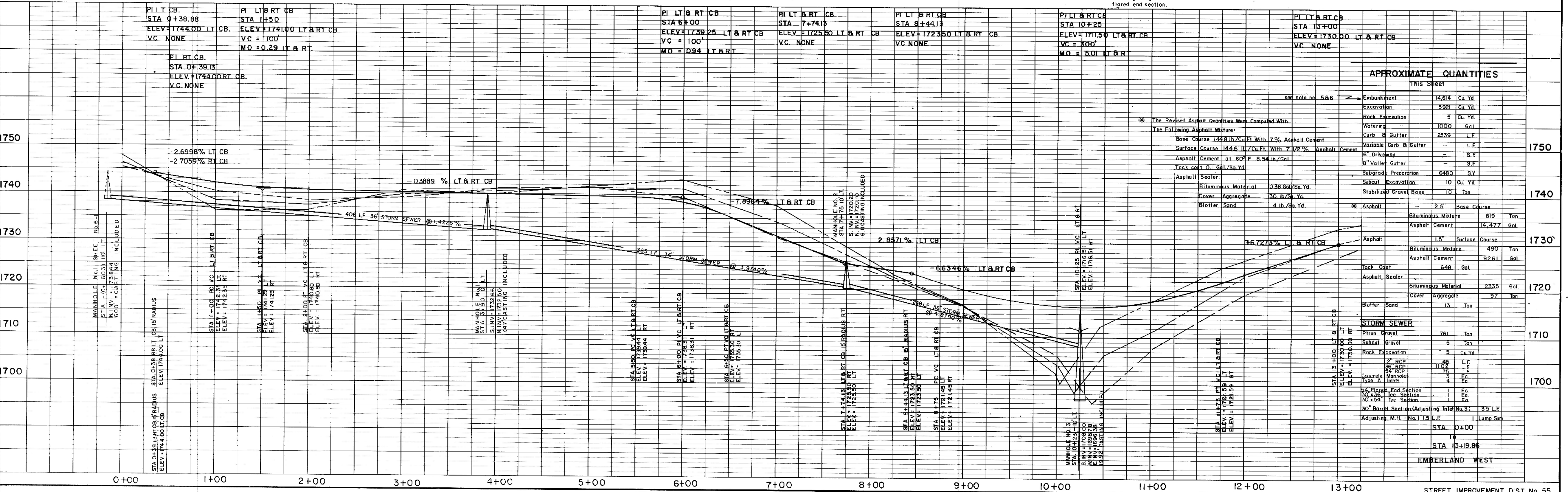
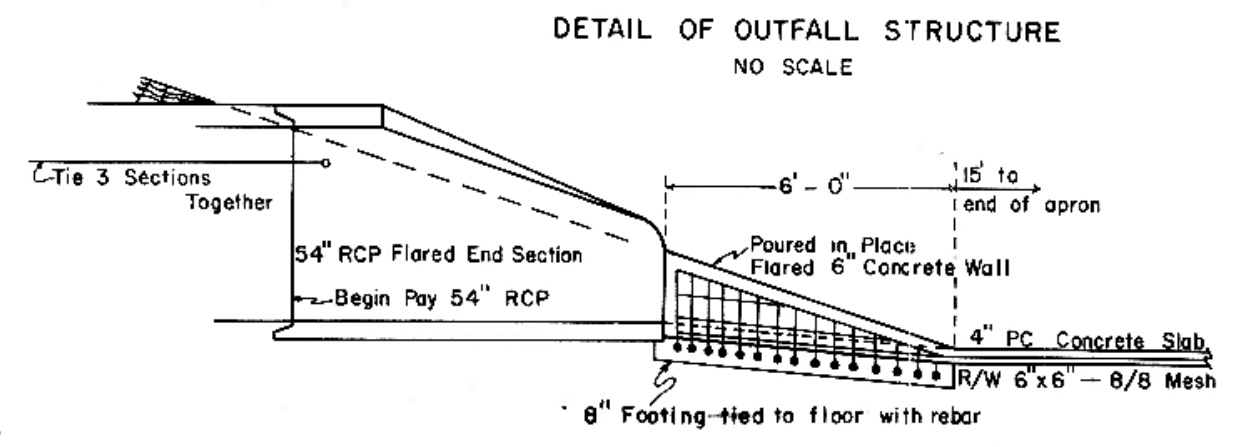
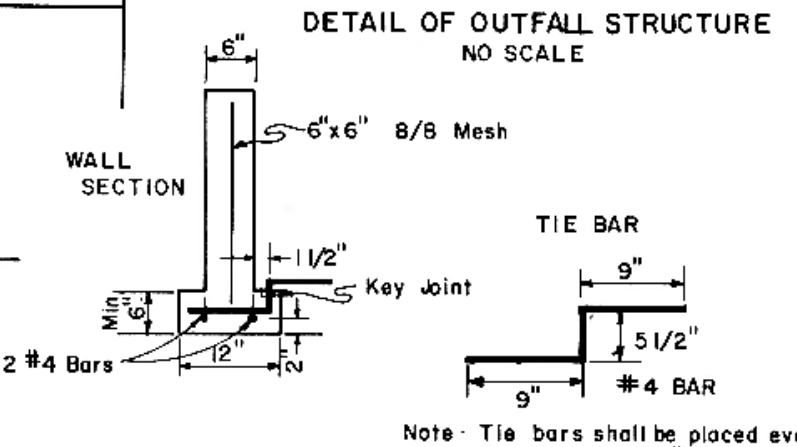
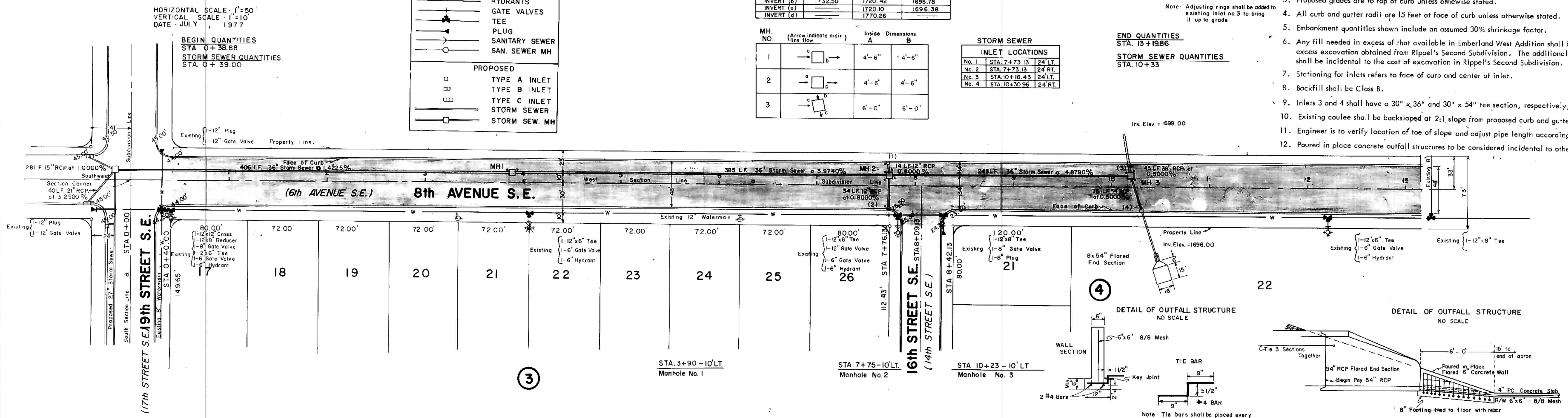
Note: Adjusting rings shall be added to existing inlet no. 3 to bring it up to grade.

INLET LOCATIONS	
No. 1	STA. 7+73.13 24' LT.
No. 2	STA. 7+73.13 24' RT.
No. 3	STA. 10+18.43 24' LT.
No. 4	STA. 10+30.96 24' RT.

END QUANTITIES  
STA. 13+19.86

STORM SEWER QUANTITIES  
STA. 10+33

- NOTES:
- Proposed Sewer and Water Improvements on 8th Avenue SE are shown on plans for "Consolidated Sewer and Water Improvement District No. 25." Said Sewer and Water Improvements shall be installed prior to any street improvements and contractor shall be responsible for the preservation of said Sewer and Water Improvements during Construction.
  - Sewer and Water Improvements as shown on plans are existing as per date of street improvement plans. Existing Sewer and Water as per "Consolidated Water and Sewer Improvement District No. 23."
  - Proposed grades are to top of curb unless otherwise stated.
  - All curb and gutter radii are 15 feet at face of curb unless otherwise stated.
  - Embankment quantities shown include an assumed 30% shrinkage factor.
  - Any fill needed in excess of that available in Emberland West Addition shall be obtained from excess excavation obtained from Rippe's Second Subdivision. The additional haul distance shall be incidental to the cost of excavation in Rippe's Second Subdivision.
  - Stationing for inlets refers to face of curb and center of inlet.
  - Backfill shall be Class B.
  - Inlets 3 and 4 shall have a 30" x 36" and 30" x 54" tee section, respectively, for inlet bases.
  - Existing coulee shall be backslotted at 2:1 slope from proposed curb and gutter.
  - Engineer is to verify location of toe of slope and adjust pipe length accordingly.
  - Poured in place concrete outfall structures to be considered incidental to other items.



APPROXIMATE QUANTITIES		This Sheet	
Embankment	14.614	Cu. Yd.	
Excavation	5.921	Cu. Yd.	
Rock Excavation	5	Cu. Yd.	
Watering	10.000	Gal.	
Curb & Gutter	2839	L.F.	
Variable Curb & Gutter	-	L.F.	
8" Driveway	-	S.F.	
8" Valley Gutter	-	S.F.	
Subgrade Preparation	6480	S.Y.	
Subcut Excavation	10	Cu. Yd.	
Stabilized Gravel Base	10	Ton	
Asphalt	2	5' Base Course	
Biluminous Mixture	819	Ton	
Asphalt Cement	14,477	Gal.	
Asphalt	1.6	1.5" Surface Course	
Biluminous Mixture	490	Ton	
Asphalt Cement	9261	Gal.	
Lock Coat	638	Gal.	
Asphalt Sealer	-		
Biluminous Material	2335	Gal.	
Cover Aggregate	97	Ton	
Ballast Sand	13	Ton	
<b>STORM SEWER</b>			
Birim. Gravel	761	Ton	
Subcut Gravel	5	Ton	
Rock Excavation	5	Cu. Yd.	
12" RCP	1102	L.F.	
6" RCP	75	L.F.	
Concrete Manholes	3	EA	
Type A Inlets	4	EA	
6' Flared End Section	1	EA	
30" x 36" Tee Section	1	EA	
30" x 54" Tee Section	1	EA	
30" Barrel Section (Adjusting Inlet No. 3)	3.5	L.F.	
Adjusting M.H. No. 1	1	Lump Sum	
STA. 0+00			
STA. 13+19.86			

PLAN  
DATE  
BY  
CHECKED  
DATE  
BY

PROFILE  
DATE  
BY  
CHECKED  
DATE  
BY