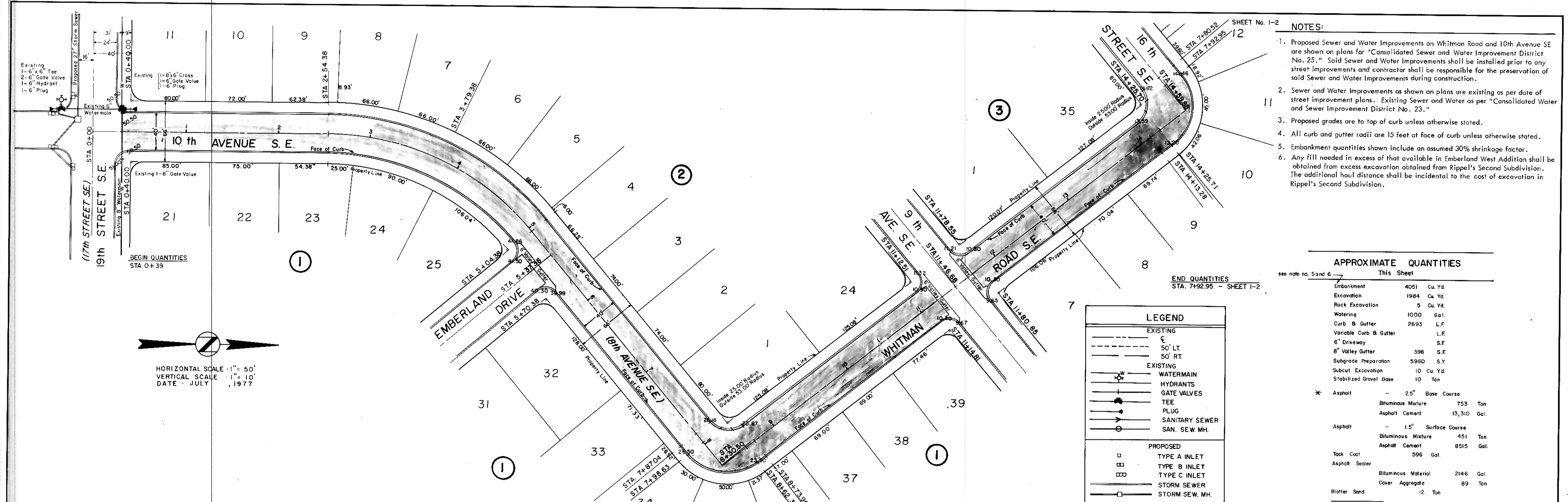


DATE: \_\_\_\_\_  
 BY: \_\_\_\_\_  
 SUPERVISOR: \_\_\_\_\_  
 CHECKER: \_\_\_\_\_  
 DATE: \_\_\_\_\_  
 NO. \_\_\_\_\_

DATE: \_\_\_\_\_  
 BY: \_\_\_\_\_  
 SUPERVISOR: \_\_\_\_\_  
 CHECKER: \_\_\_\_\_  
 DATE: \_\_\_\_\_  
 NO. \_\_\_\_\_



HORIZONTAL SCALE - 1" = 50'  
 VERTICAL SCALE - 1" = 10'  
 DATE - JULY 1977

**LEGEND**

EXISTING  
 C  
 50' LT  
 50' RT

EXISTING  
 WATERMAIN  
 HYDRANTS  
 GATE VALVES  
 TEE  
 PLUG  
 SANITARY SEWER  
 SAN. SEW. MH.

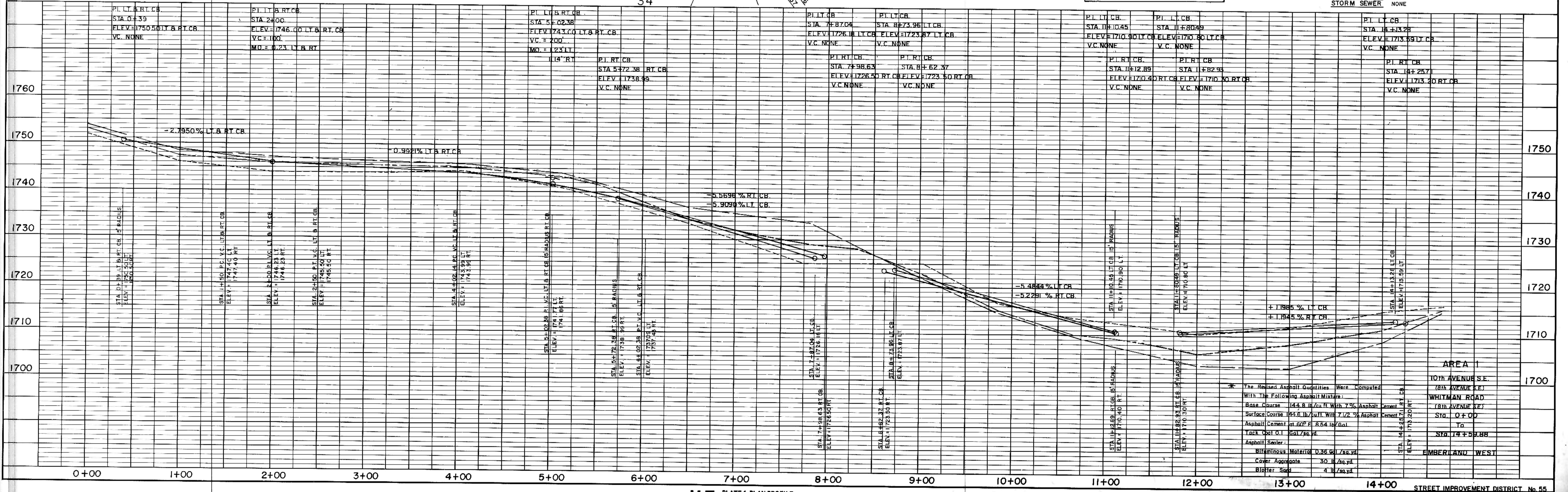
PROPOSED  
 TYPE A INLET  
 TYPE B INLET  
 TYPE C INLET  
 STORM SEWER  
 STORM SEW. MH.

- NOTES:**
- Proposed Sewer and Water Improvements on Whitman Road and 10th Avenue SE are shown on plans for "Consolidated Sewer and Water Improvement District No. 25." Said Sewer and Water Improvements shall be installed prior to any street improvements and contractor shall be responsible for the preservation of said Sewer and Water Improvements during construction.
  - Sewer and Water Improvements as shown on plans are existing as per date of street improvement plans. Existing Sewer and Water as per "Consolidated Sewer and Water Improvement District No. 23."
  - Proposed grades are to top of curb unless otherwise stated.
  - All curb and gutter radii are 15 feet at face of curb unless otherwise stated.
  - Embankment quantities shown include an assumed 30% shrinkage factor.
  - Any fill needed in excess of that available in Emberland West Addition shall be obtained from excess excavation obtained from Rippe's Second Subdivision. The additional haul distance shall be incidental to the cost of excavation in Rippe's Second Subdivision.

**APPROXIMATE QUANTITIES**  
 This Sheet  
 see note no. 5 and 6

Embankment	4051	Cu. Yd.
Excavation	1984	Cu. Yd.
Rock Excavation	5	Cu. Yd.
Watering	1000	Gal.
Curb & Gutter	2693	L.F.
Variable Curb & Gutter		L.F.
6" Driveway		S.F.
8" Valley Gutter	396	S.F.
Subgrade Preparation	5960	S.Y.
Subcut Excavation	10	Cu. Yd.
Stabilized Gravel Base	10	Ton
* Asphalt - 2.5" Base Course		
Bituminous Mixture	753	Ton
Asphalt Cement	13,310	Gal.
Asphalt - 1.5" Surface Course		
Bituminous Mixture	451	Ton
Asphalt Cement	8515	Gal.
Tack Coat	596	Gal.
Asphalt Sealer		
Bituminous Material	2146	Gal.
Cover Aggregate	89	Ton
Blotter Sand	12	Ton

**STORM SEWER** NONE



**AREA 1**  
 10th AVENUE S.E.  
 (8th AVENUE S.E.)  
 WHITMAN ROAD  
 (8th AVENUE S.E.)  
 STA. 0+00  
 STA. 14+50.88  
 EMBERLAND WEST

\* The Revised Asphalt Quantities Were Computed With the Following Asphalt Mixture:  
 Base Course 14.8 lb./Cu. Ft. With 7% Asphalt Cement  
 Surface Course 14.8 lb./Cu. Ft. With 7% Asphalt Cement  
 Asphalt Cement at 60° F. 8.54 lb./Gal.  
 Tack Coat 0.1 Gal./Sq. Yd.  
 Asphalt Sealer:  
 Bituminous Material 0.35 Gal./Sq. Yd.  
 Cover Aggregate 30 lb./Sq. Yd.  
 Blotter Sand 4 lb./Sq. Yd.

**K&E** PLATE 1, PLAN-PROFILE  
 KRUEFFEL & ESSER CO.  
 487024 MADE IN U.S.A.

STREET IMPROVEMENT DISTRICT No. 55  
 MANDAN, NORTH DAKOTA  
 SHEET No. 1-3  
 DATE REVISED: February, 1978