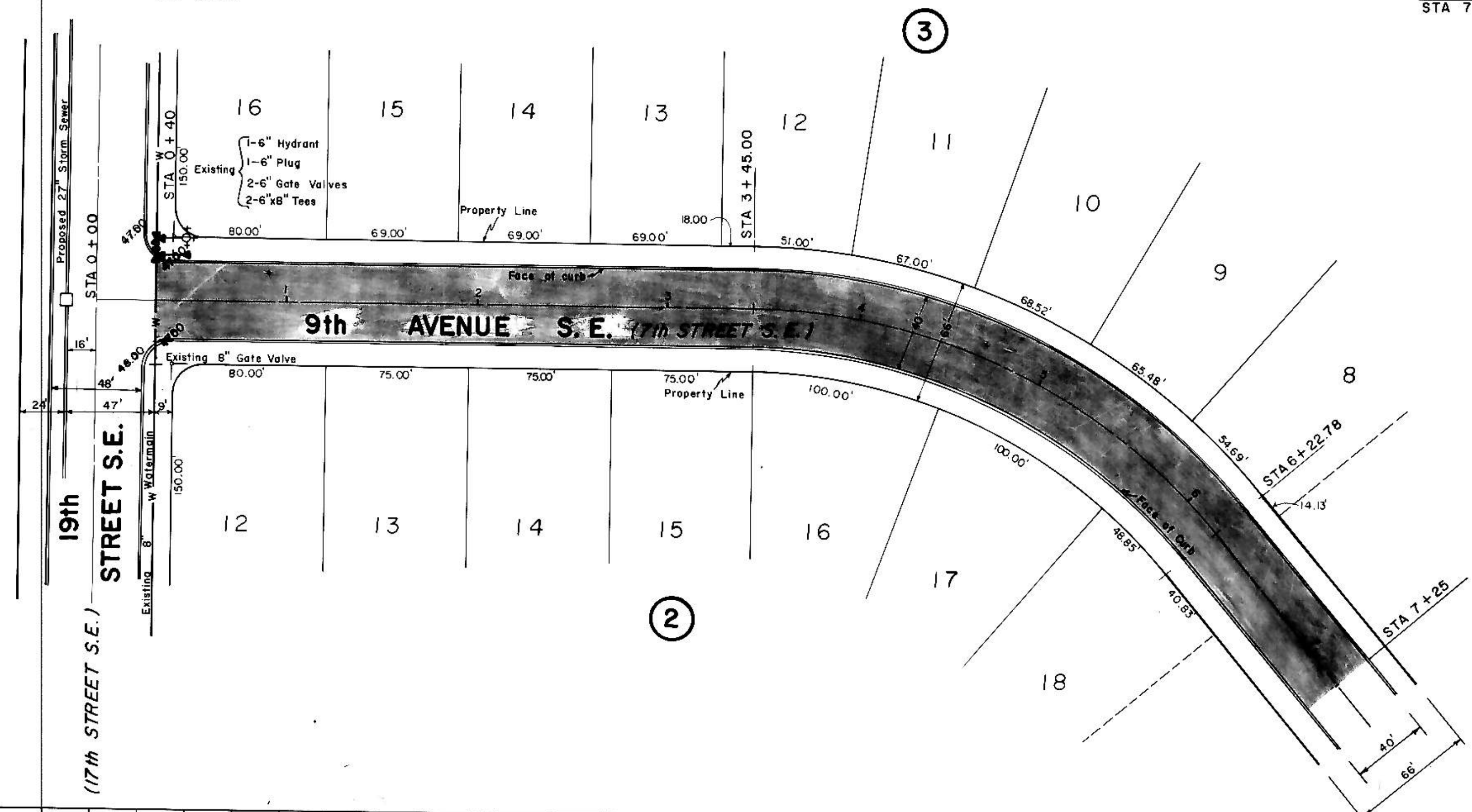


HORIZONTAL SCALE: 1"=50'
 VERTICAL SCALE: 1"=10'
 DATE: JULY 1, 1977

BEGIN QUANTITIES
 STA 0+39

END QUANTITIES
 STA 7+25



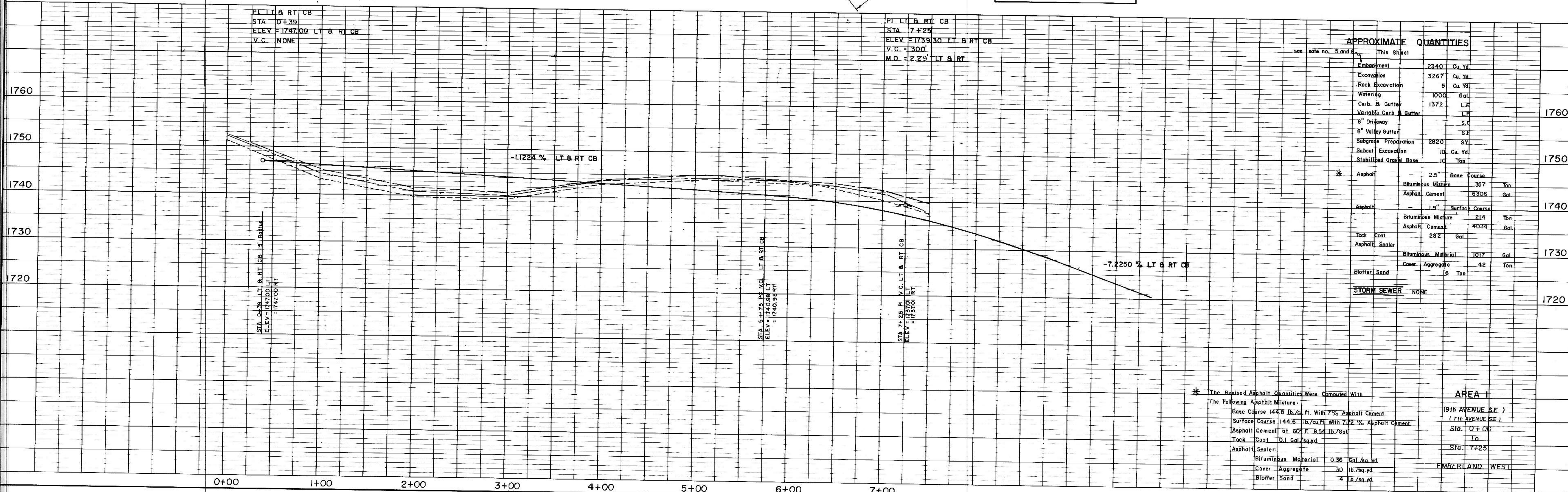
LEGEND	
EXISTING	
---	50' LT
---	50' RT
EXISTING	
W	WATERMAIN
H	HYDRANTS
G	GATE VALVE
T	TEE
P	PLUG
S	SANITARY SEWER
M	SAN. SEWER MH
PROPOSED	
□	TYPE A INLET
▣	TYPE B INLET
▢	TYPE C INLET
---	STORM SEWER
---	STORM SEW. MH

NOTES:

- Proposed Sewer and Water Improvements on 9th Avenue SE are shown on plans for "Consolidated Sewer and Water Improvement District No. 25." Said Sewer and Water Improvements shall be installed prior to any street improvements and contractor shall be responsible for the preservation of said Sewer and Water Improvements during construction.
- Sewer and Water Improvements as shown on plans are existing as per date of street improvement plans. Existing Sewer and Water as per "Consolidated Water and Sewer Improvement District No. 23."
- Proposed grades are to top of curb unless otherwise stated.
- All curb and gutter radii are 15 feet or face of curb unless otherwise stated.
- Embankment quantities shown include an assumed 30% shrinkage factor.
- Any fill needed in excess of that available in Emberland West Addition shall be obtained from excess excavation obtained from Rippe's Second Subdivision. The additional haul distance shall be incidental to the cost of excavation in Rippe's Second Subdivision.

PLAN
 DATE: _____
 BY: _____
 CHECKED: _____
 APPROVED: _____

PROFILE
 DATE: _____
 BY: _____
 CHECKED: _____
 APPROVED: _____



APPROXIMATE QUANTITIES	
Embankment	2240 Cu. Yd.
Excavation	3267 Cu. Yd.
Rock Excavation	5 Cu. Yd.
Watering	1000 Gal.
Curb & Gutter	1372 LF
Variable Curb & Gutter	LF
8" Driveway	S.F.
8" Valley Gutter	S.F.
Subgrade Preparation	2820 S.F.
Subsoil Excavation	10 Cu. Yd.
Stabilized Gravel Base	10 Ton
Asphalt	2.5" Base Course 357 Ton
Asphalt	Asphalt Cement 6306 Gal.
Asphalt	1.5" Surface Course 214 Ton
Asphalt	Asphalt Cement 4034 Gal.
Tack Coat	282 Gal.
Asphalt	Asphalt Sealer 1017 Gal.
Asphalt	Bituminous Material 42 Ton
Blotter Sand	5 Ton
STORM SEWER	NONE

* The Revised Asphalt Quantities Were Computed With The Following Asphalt Mixture:
 Base Course 144.8 lb./cu. ft. With 7% Asphalt Cement
 Surface Course 144.8 lb./cu. ft. With 7.2% Asphalt Cement
 Asphalt Cement at 60°F. 8.54 lb./gal.
 Tack Coat .01 gal./sq. yd.
 Asphalt Sealer
 Bituminous Material 0.36 gal./sq. yd.
 Cover Aggregate 30 lb./sq. yd.
 Blotter Sand 4 lb./sq. yd.

AREA I
 (9th AVENUE SE.)
 (7th AVENUE SE.)
 Sta. 0+00
 To
 Sta. 7+25
 EMBERLAND WEST