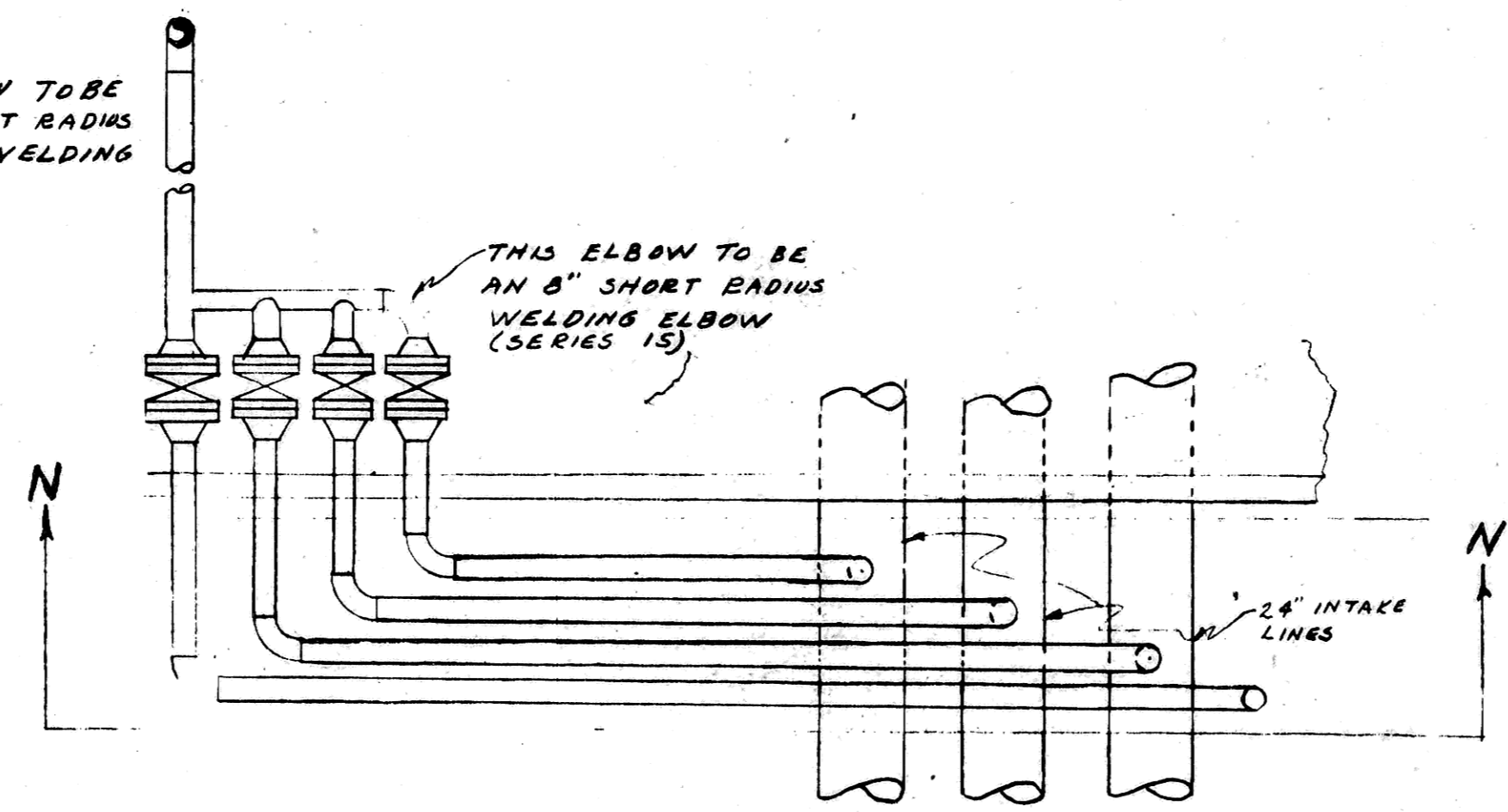
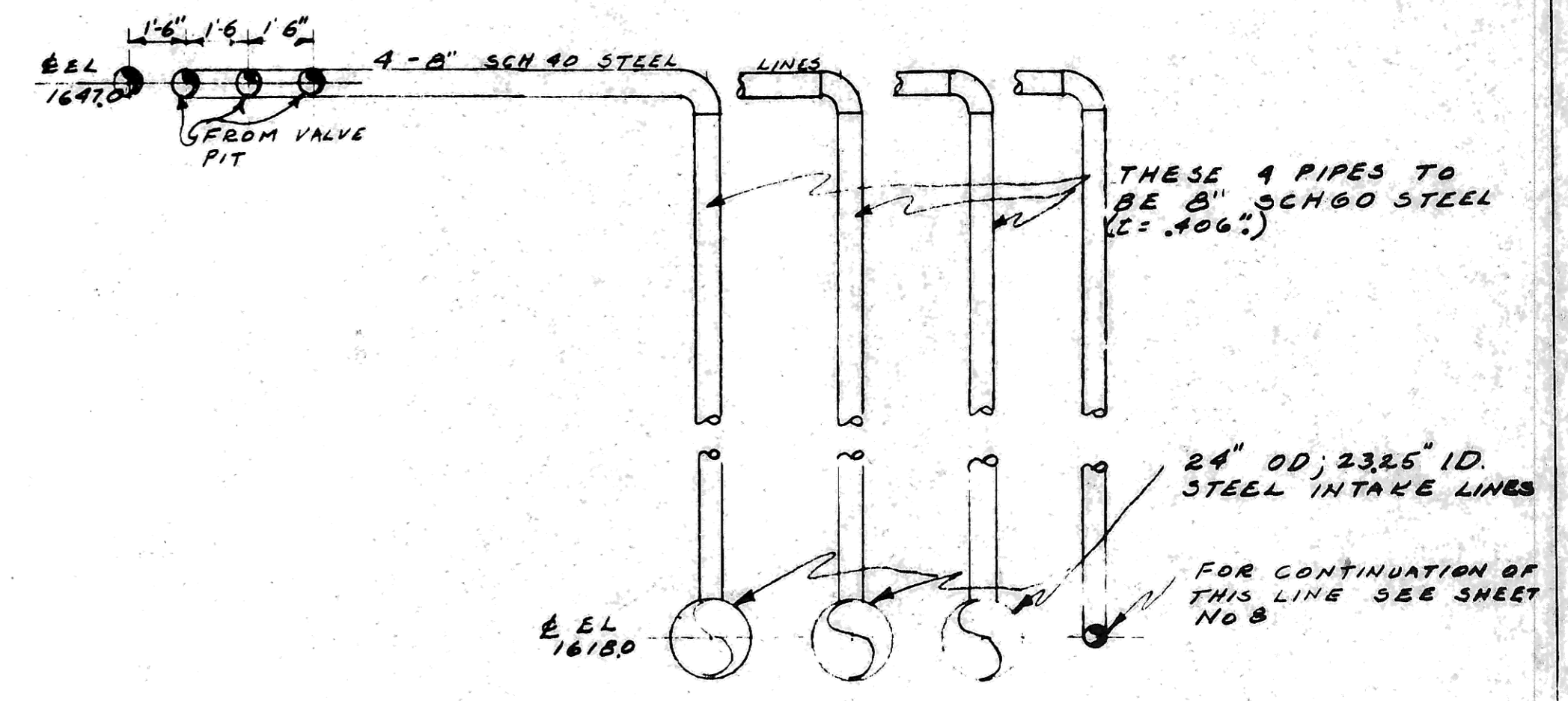


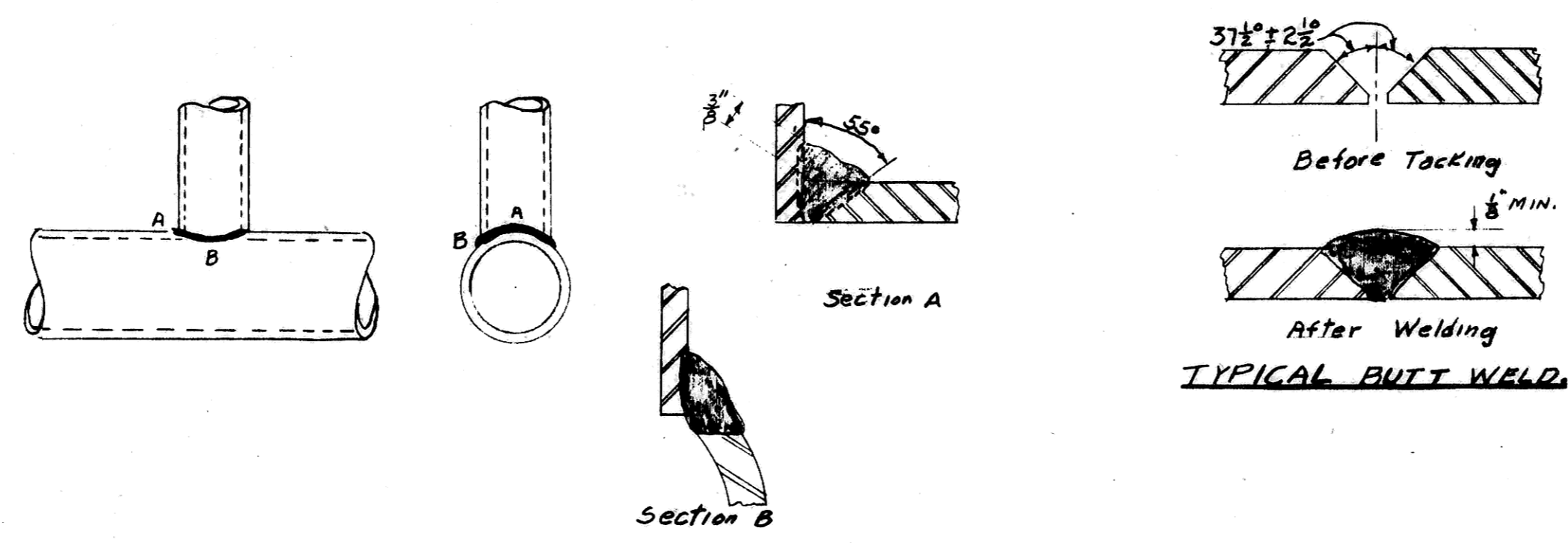
**PLAN ABOVE GRADE**  
SCALE 1/4"=1'



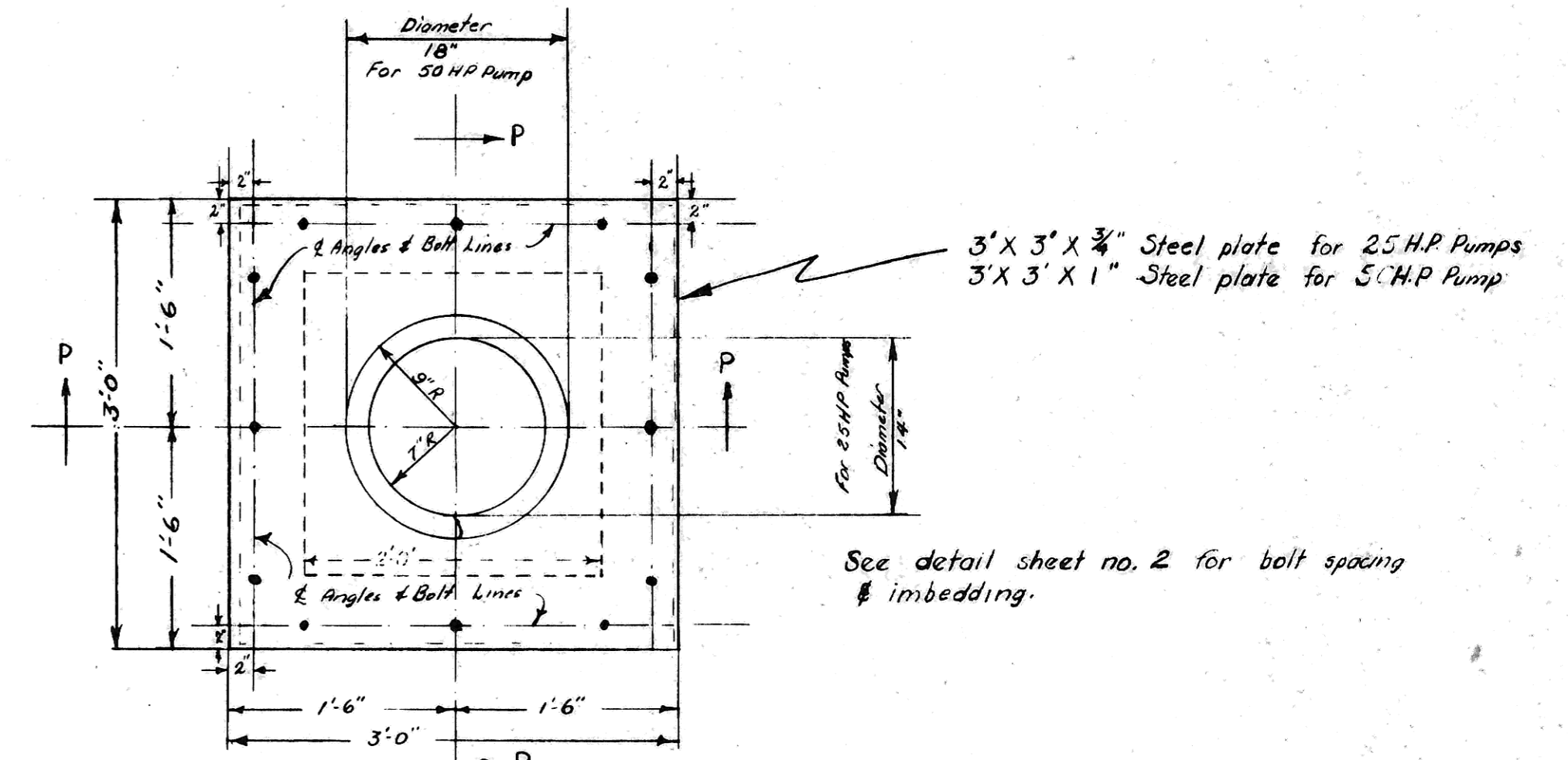
**PLAN BELOW GRADE**  
NOT TO SCALE



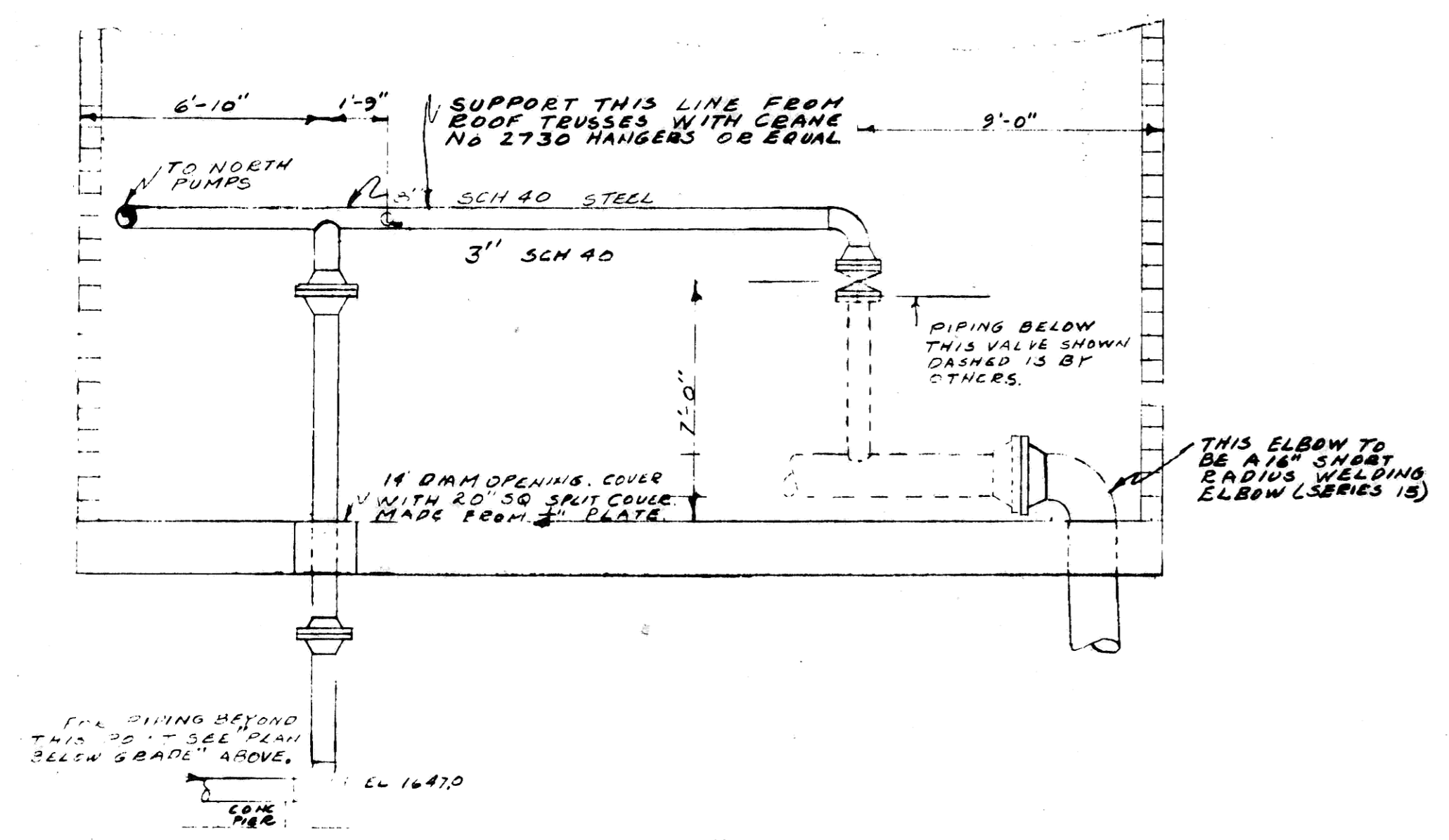
**SECTION "N-N"**  
NOT TO SCALE



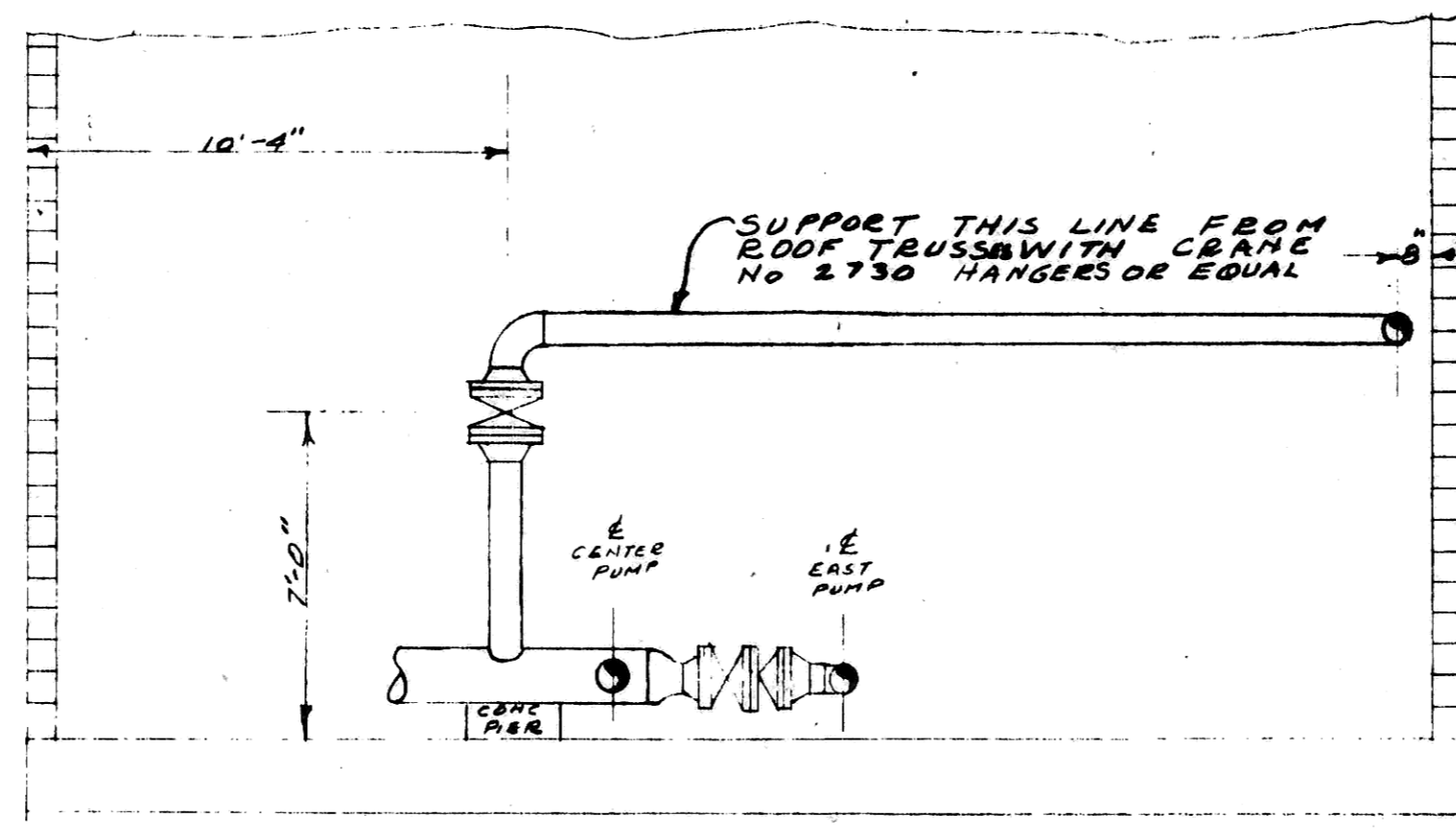
**TYPICAL 90° BRANCH WELD DETAIL**



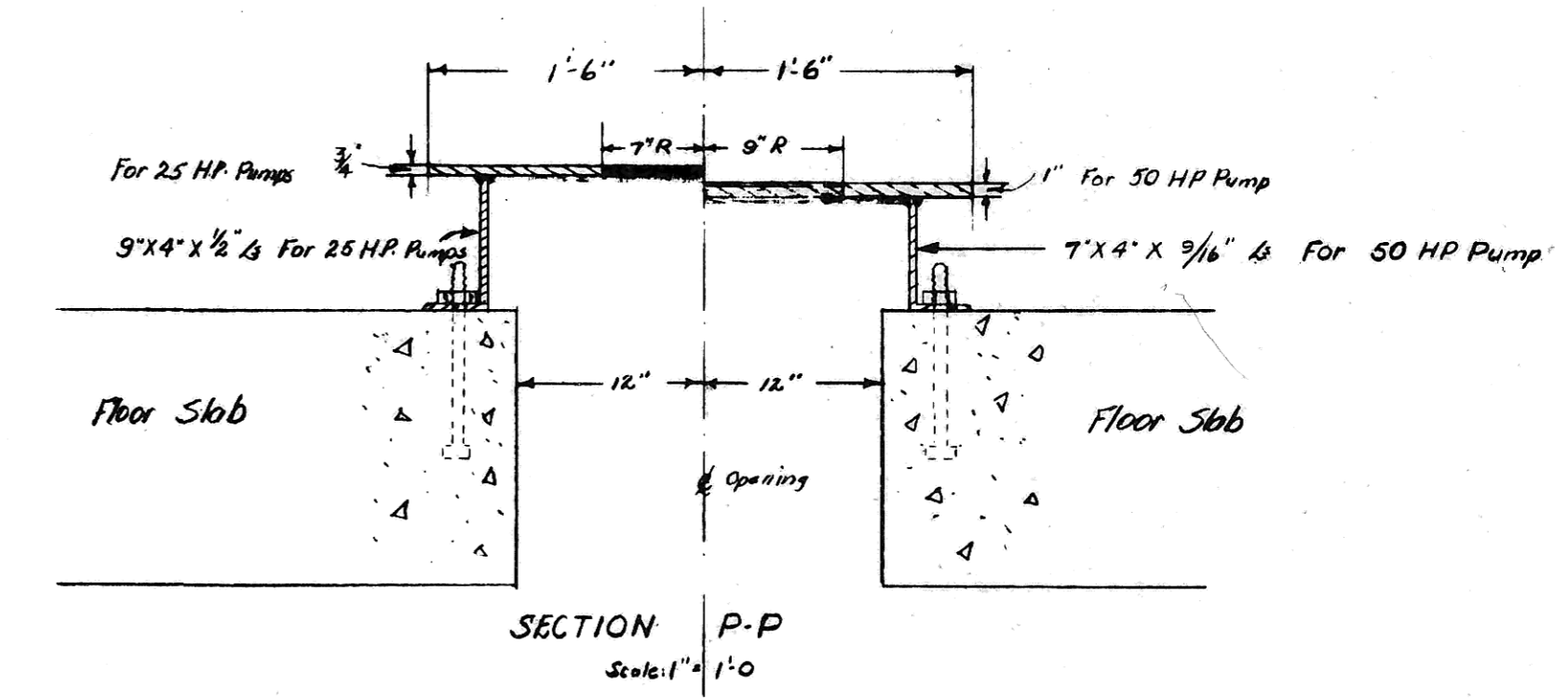
**PLAN VIEW - PUMP BASE-NORTH PUMPS**  
SCALE: 1"=1'-0"



**SECTION "M-M"**  
SCALE 1/4"=1'



**SECTION "L-L"**  
SCALE 1/4"=1'



**SECTION P-P**  
Scale: 1"=1'-0"

ALL FLANGES TO BE 150° WELDING NECK EXCEPT AS NOTED.  
ALL 150° WELDING NECK STEEL FLANGES BUTTINGS AGAINST G.I. VALVES OR CHECK VALVES ARE TO BE FLAT FACED WITH FULL FACE GASKET.  
ALL ELBOWS ARE TO BE SERIES 15 LONG RADIUS WELDING ELBOWS EXCEPT AS NOTED.

Job: WATER WORKS IMPROVEMENTS, 1953  
PHASE II

File No. \_\_\_\_\_ Date: \_\_\_\_\_  
Revised: \_\_\_\_\_

SHEET NO. 6 OF 9 SHEETS

Scale: \_\_\_\_\_

DRAWN BY: **GEORGE J. TOLLEY**  
REGISTERED PROFESSIONAL ENGINEER  
NORTH DAKOTA

CHECKED BY: \_\_\_\_\_

**PIPING & NORTH PUMP BASE DETAILS**

George J. Tolley  
N. P. E. No. 185

Consulting Engineer  
Mandan, North Dakota