

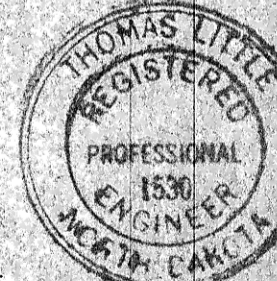
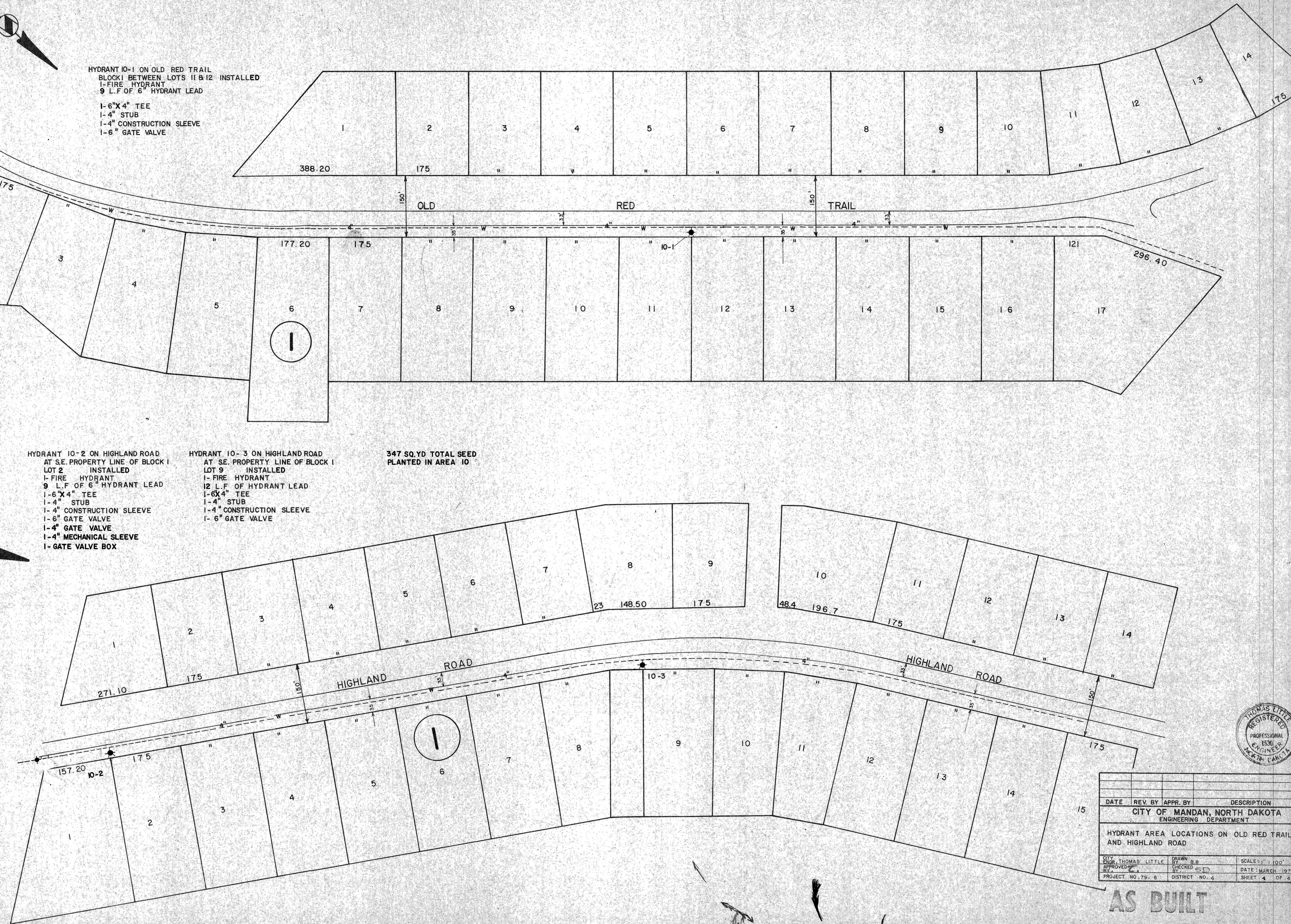
SCALE 1" = 100'

HYDRANT 10-1 ON OLD RED TRAIL  
 BLOCK I BETWEEN LOTS 11 & 12 INSTALLED  
 1-FIRE HYDRANT  
 9 L.F. OF 6" HYDRANT LEAD  
 1-6"X4" TEE  
 1-4" STUB  
 1-4" CONSTRUCTION SLEEVE  
 1-6" GATE VALVE

HYDRANT 10-2 ON HIGHLAND ROAD  
 AT S.E. PROPERTY LINE OF BLOCK I  
 LOT 2 INSTALLED  
 1-FIRE HYDRANT  
 9 L.F. OF 6" HYDRANT LEAD  
 1-6"X4" TEE  
 1-4" STUB  
 1-4" CONSTRUCTION SLEEVE  
 1-6" GATE VALVE  
 1-4" GATE VALVE  
 1-4" MECHANICAL SLEEVE  
 1-GATE VALVE BOX

HYDRANT 10-3 ON HIGHLAND ROAD  
 AT S.E. PROPERTY LINE OF BLOCK I  
 LOT 9 INSTALLED  
 1-FIRE HYDRANT  
 12 L.F. OF HYDRANT LEAD  
 1-6"X4" TEE  
 1-4" STUB  
 1-4" CONSTRUCTION SLEEVE  
 1-6" GATE VALVE

347 SQ.YD TOTAL SEED  
 PLANTED IN AREA 10



DATE	REV. BY	APPR. BY	DESCRIPTION
			CITY OF MANDAN, NORTH DAKOTA ENGINEERING DEPARTMENT
HYDRANT AREA LOCATIONS ON OLD RED TRAIL AND HIGHLAND ROAD			
CITY ENGR. THOMAS LITTLE	DRAWN BY B.B.	SCALE: 1" = 100'	
APPROVED BY	CHECKED BY	DATE: MARCH 1979	
PROJECT NO. 79-6	DISTRICT NO. 6	SHEET 4	OF 4

AS BUILT