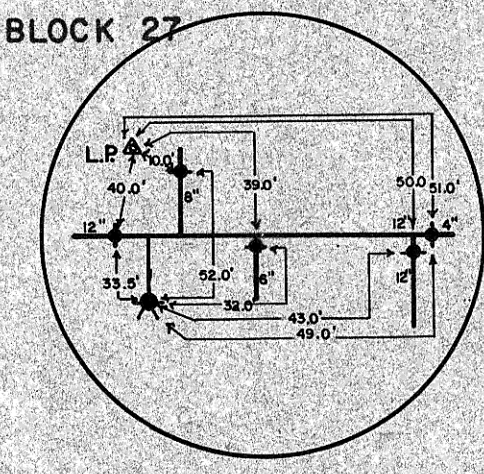
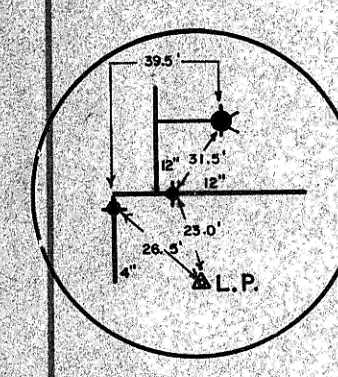
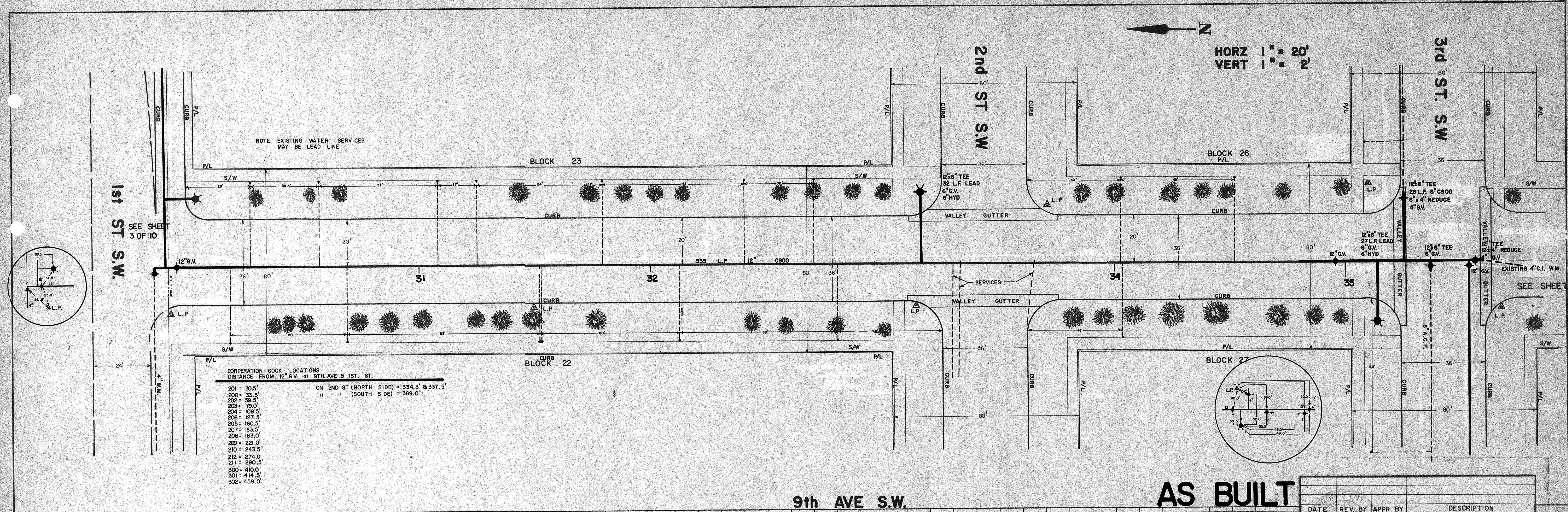


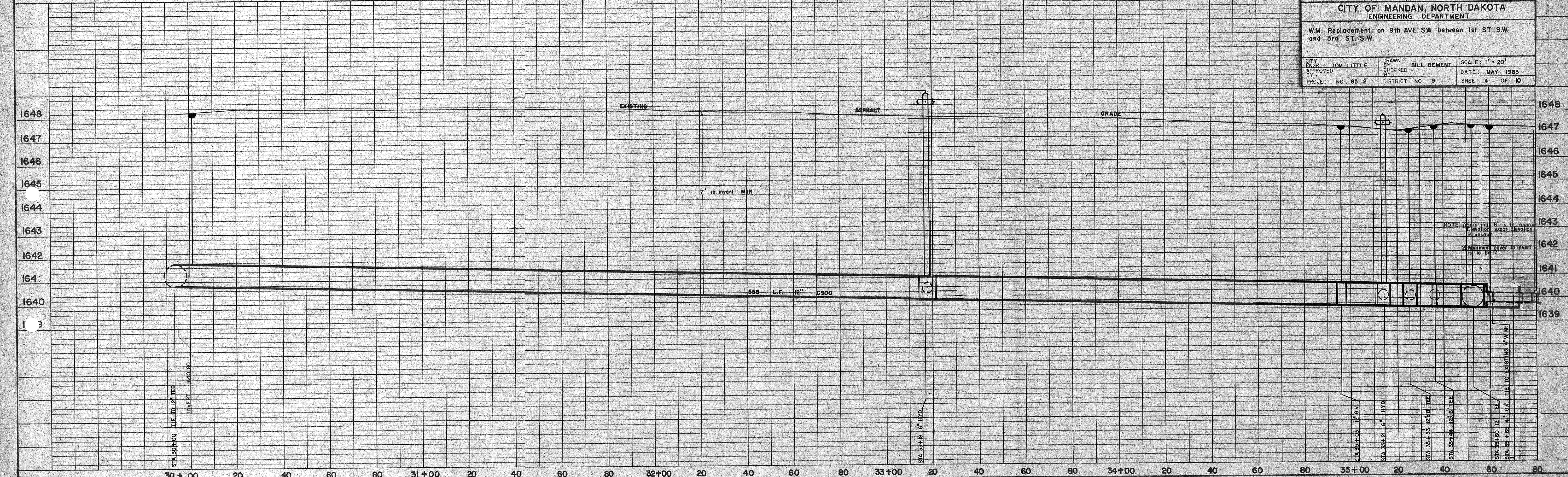


HORZ 1" = 20'  
VERT 1" = 2'



9th AVE S.W.

AS BUILT



DATE	REV. BY	APPR. BY	DESCRIPTION
			CITY OF MANDAN, NORTH DAKOTA ENGINEERING DEPARTMENT
W.M. Replacement on 9th AVE S.W. between 1st ST. S.W. and 3rd ST. S.W.			
CITY ENGR. TOM LITTLE	DRAWN BY BILL BEMENT	CHECKED BY	SCALE: 1" = 20'
APPROVED BY		DATE: MAY 1985	
PROJECT NO. 85-2	DISTRICT NO. 9	SHEET 4 OF 10	

DATE: 5/19/85  
SCALE: 1" = 20'  
SHEET 4 OF 10  
PROJECT NO. 85-2  
DISTRICT NO. 9

DATE: 5/19/85  
SCALE: 1" = 20'  
SHEET 4 OF 10  
PROJECT NO. 85-2  
DISTRICT NO. 9