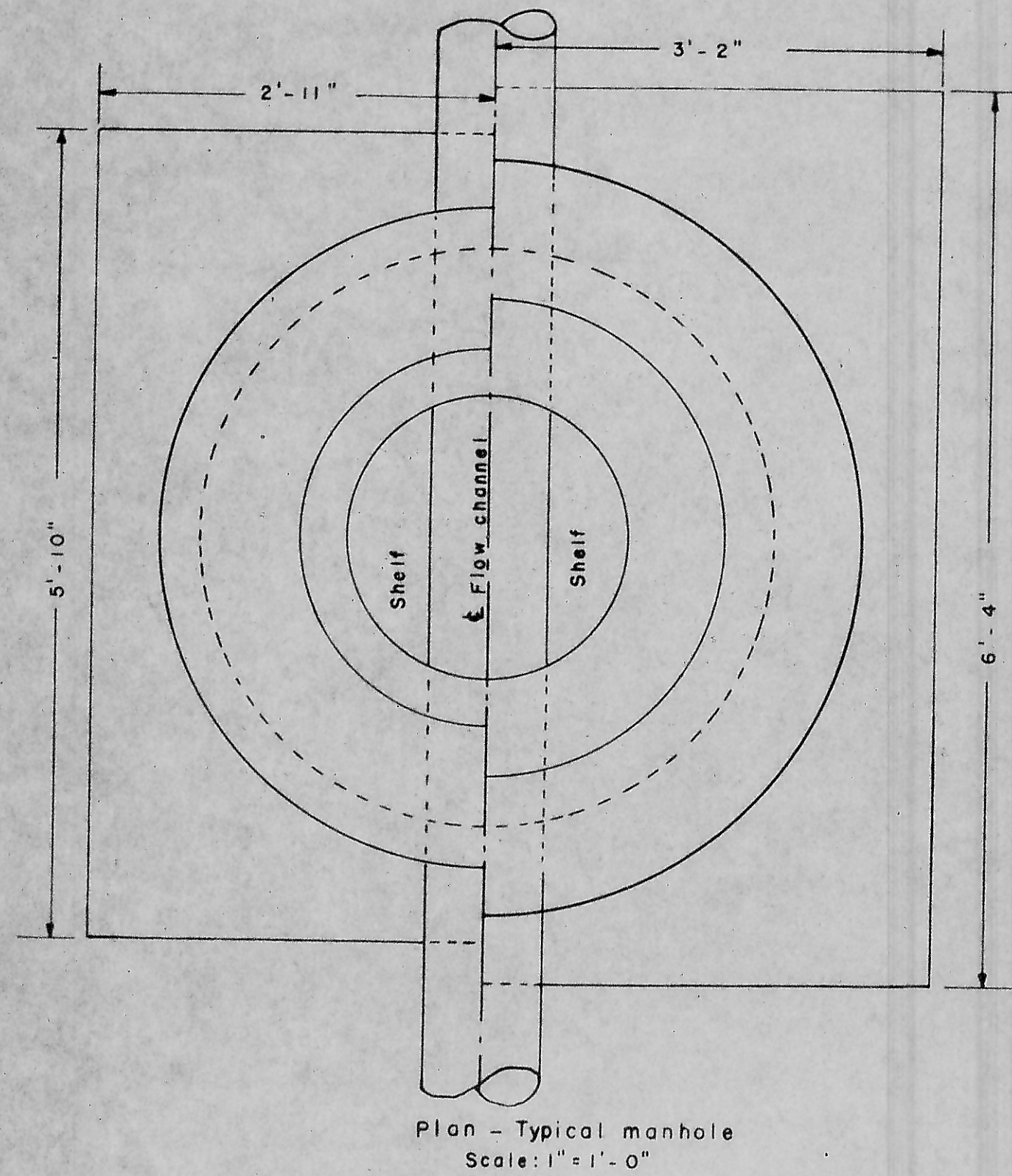
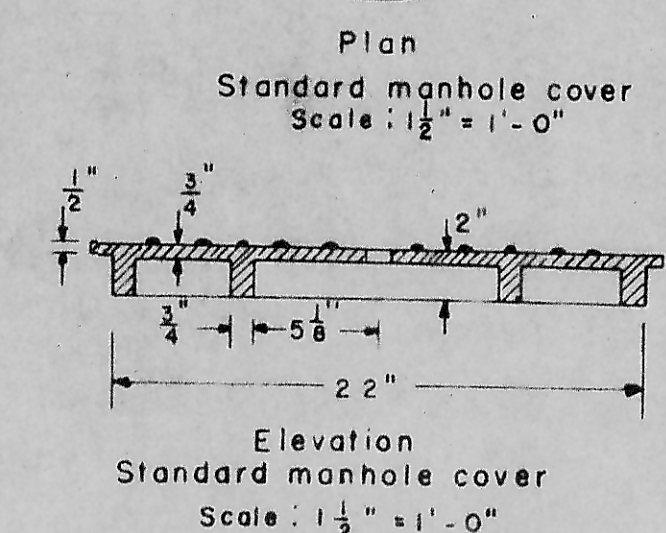
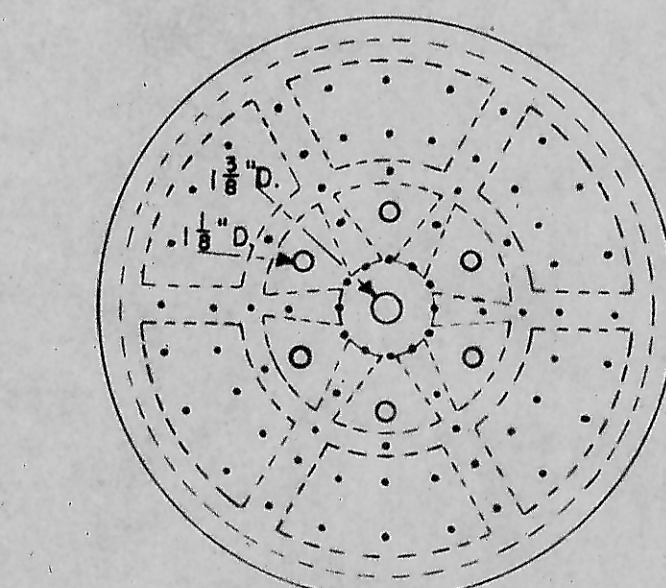
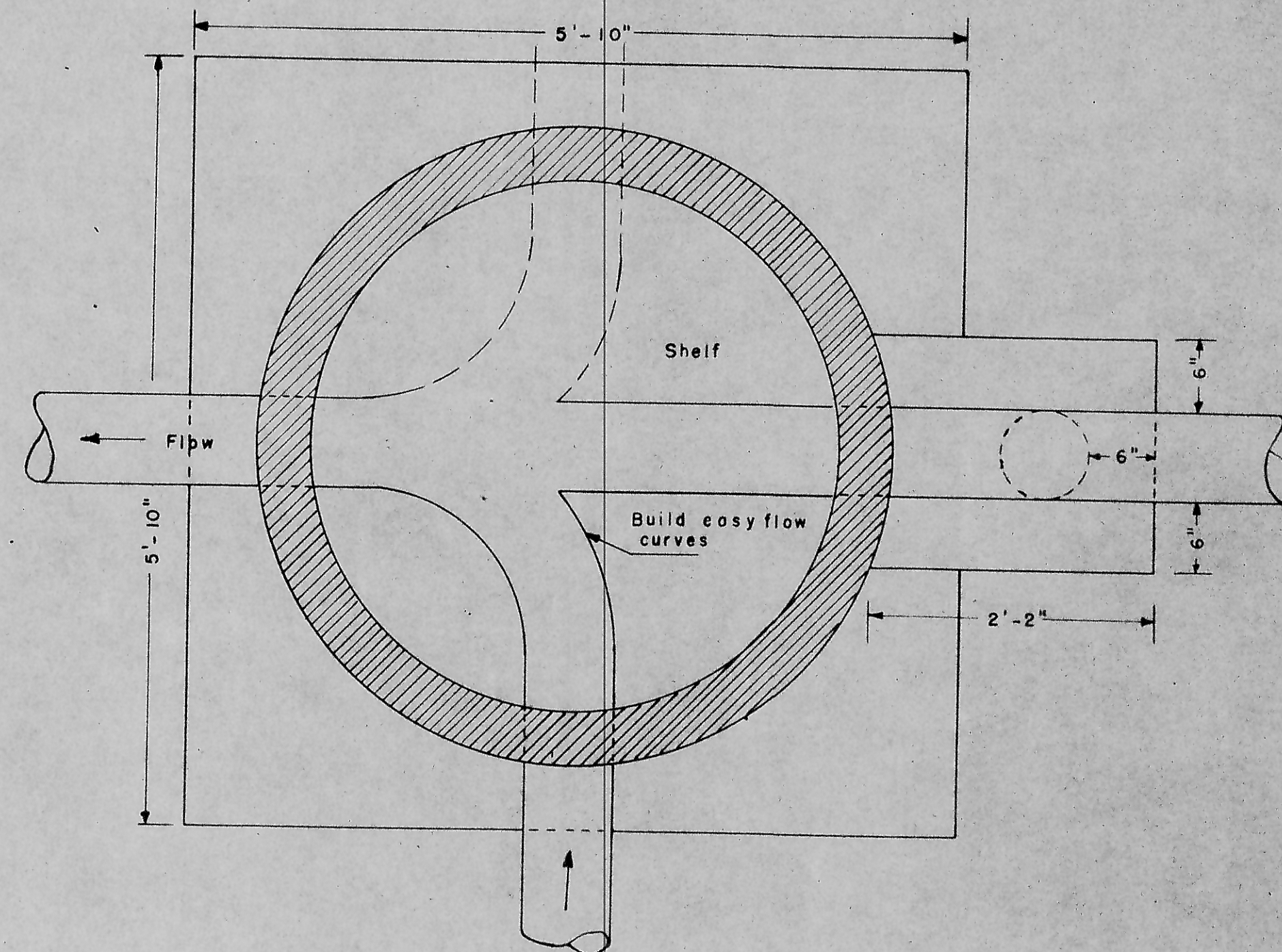
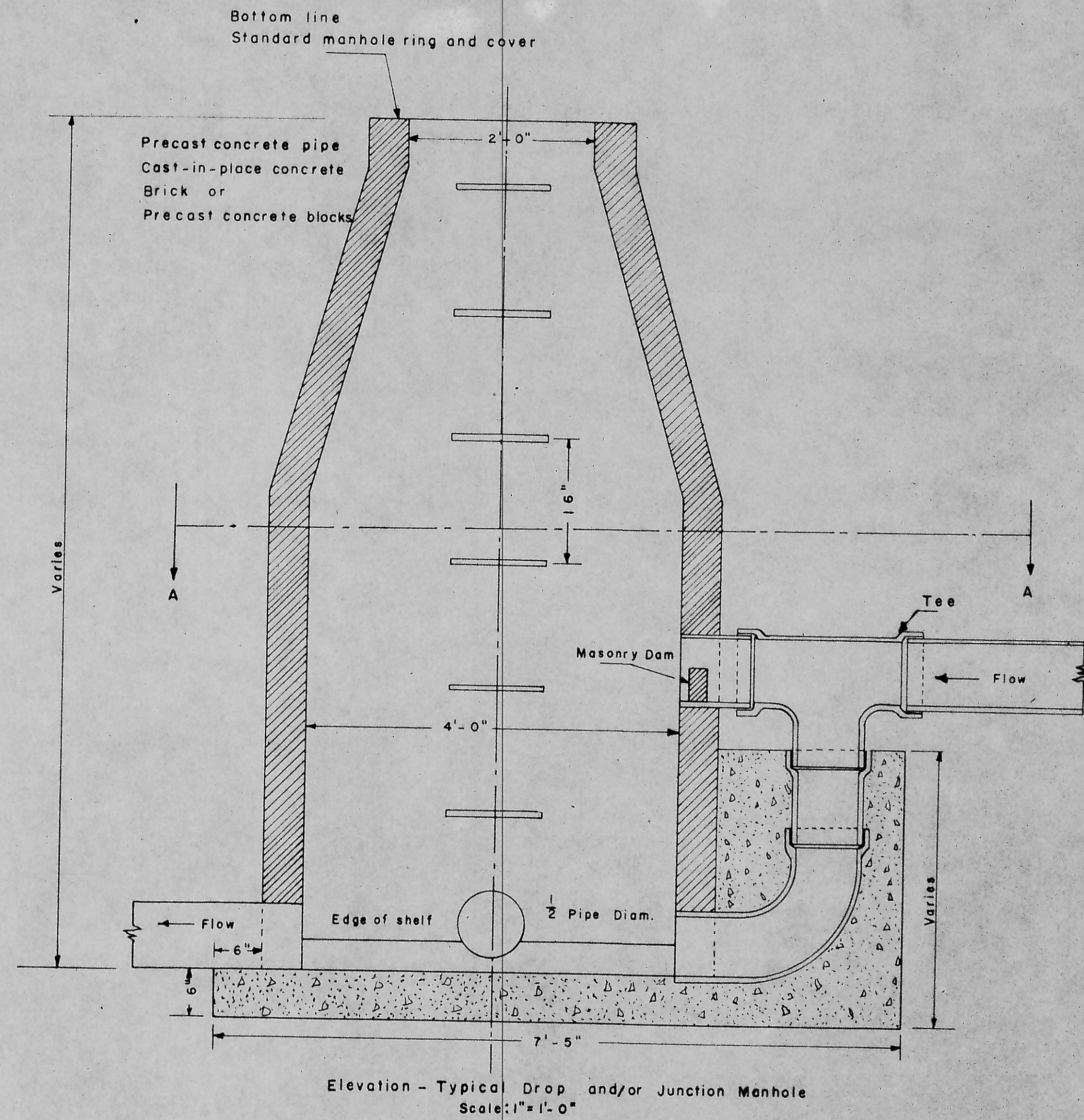


Plan Standard manhole ring  
Scale: 1 1/2" = 1'-0"



Plan - Typical manhole  
Scale: 1" = 1'-0"



Section A-A Typical Drop and/or Junction Manhole  
Scale: 1" = 1'-0"

MANDAN, NORTH DAKOTA  
SANITARY SEWER DISTRICT NO. 8  
MANHOLE DETAILS

Scale: As shown

Drawn by: wjm

Checked by: J.H.

SHEET NO. 4

George J. Toman



Consulting Engineer  
Mandan, No. Dak.