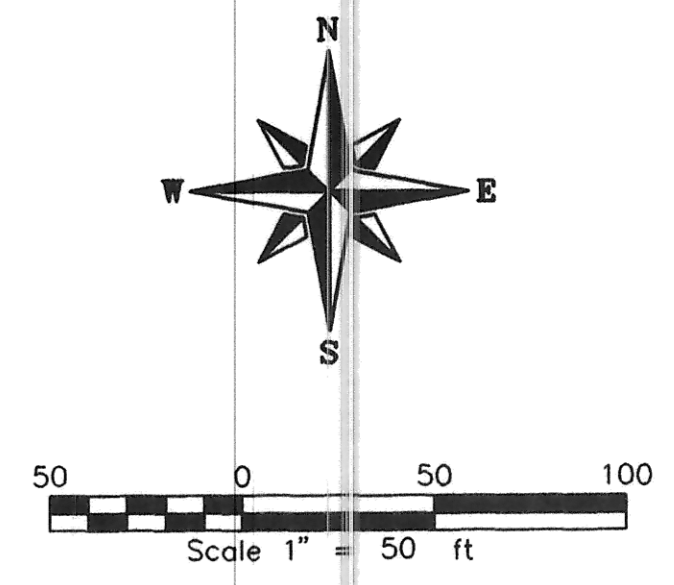
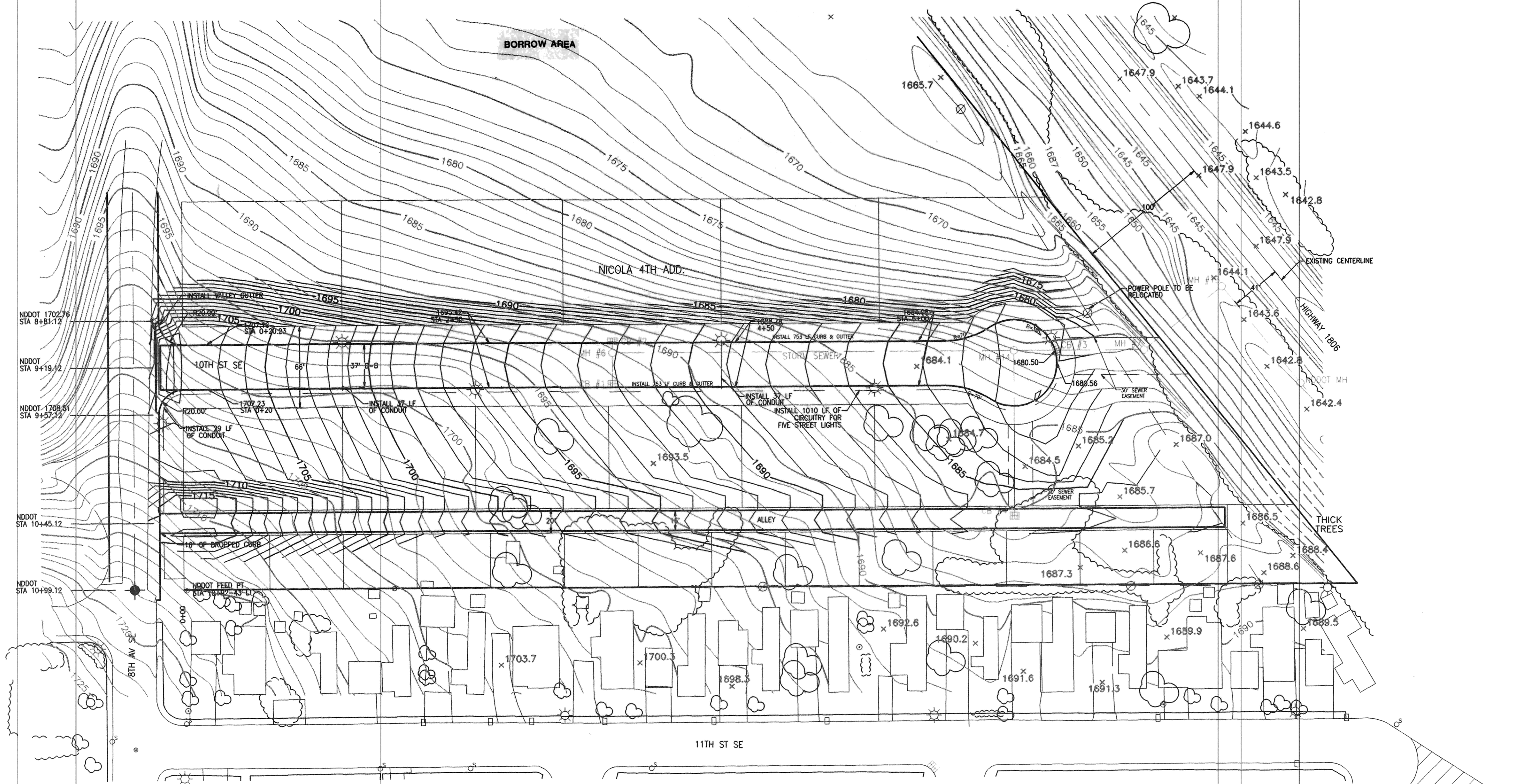


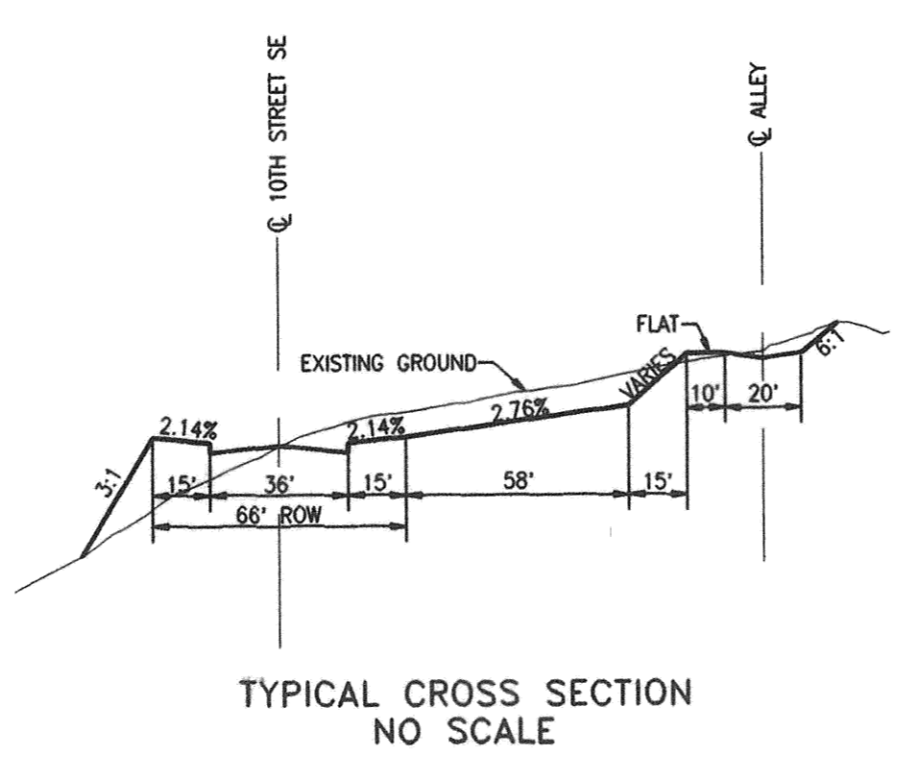
SITE GRADING PLAN 10TH STREET SE & ALLEY



NOTE: TREE REMOVAL INCIDENTAL TO SITE GRADING

LEGEND

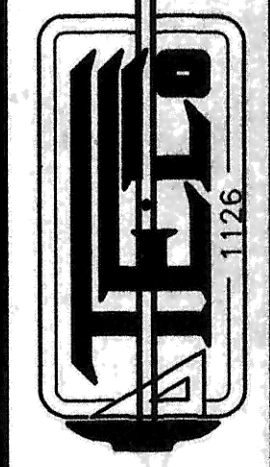
	PAVED ROAD
	BUILDING
	UTILITY POLE
	LIGHT POLE
	MANHOLE, CATCH BASIN
	SIGN, FLAGPOLE
	BOUNDARY
	POWER
	SANITARY SEWER
	NEW ROAD
	EXISTING INDEX CONTOUR
	EXISTING INTERMEDIATE CONTOUR



CAUTION
LOCATE ALL BURIED UTILITIES BEFORE DIGGING
OVERHEAD POWER



TOMAN ENGINEERING COMPANY
 CONSULTING CIVIL & ENVIRONMENTAL ENGINEERS
 900 2ND ST. N.W. • MINNAPOLIS, NORTH DAKOTA 58503 • 701-683-1443



PROJECT: SITE GRADING PLAN
 DISTRICT NO. 96 - AREA "A"
 CITY PROJECT NO. 96-9

NO.	DATE	BY	REVISIONS
1	2/19/09	AR	AS-BUILT

TITLE: 10TH STREET SE & ALLEY
 SHEET NUMBER
4
 OF 11 SHEETS

WORKBOOK: C:\1125\112555 - PLOT DATE: 07/02/09 - PLOT TIME: 10:32:38 TOMAN.PS