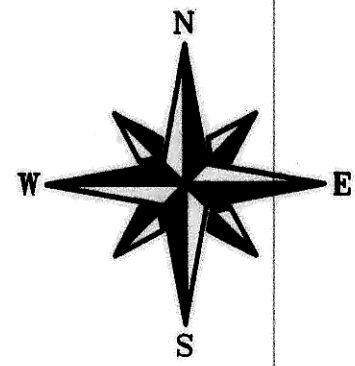
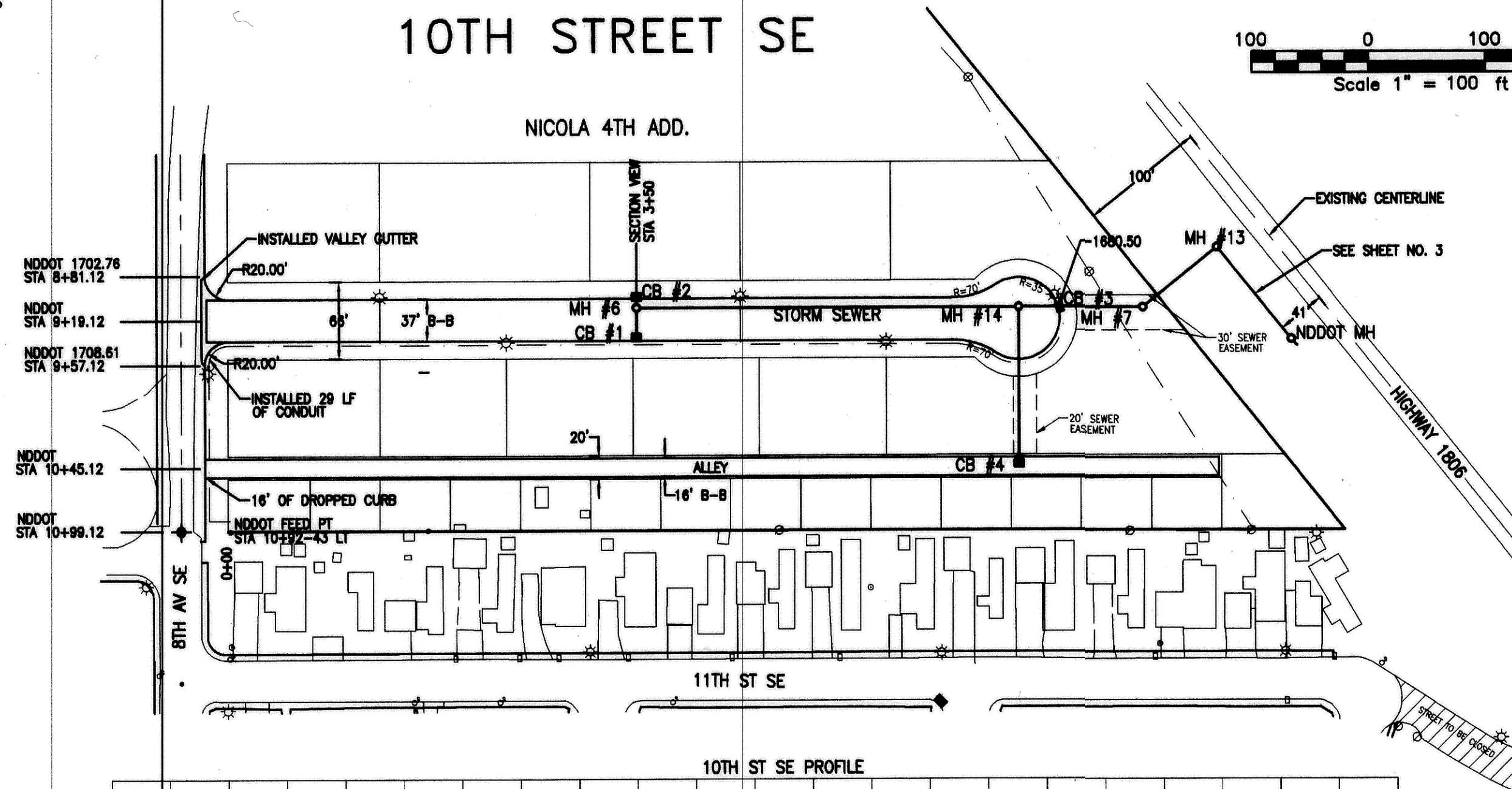
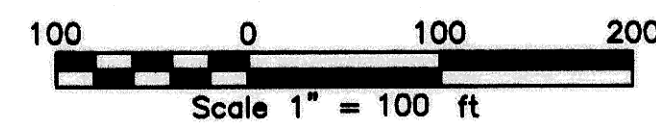


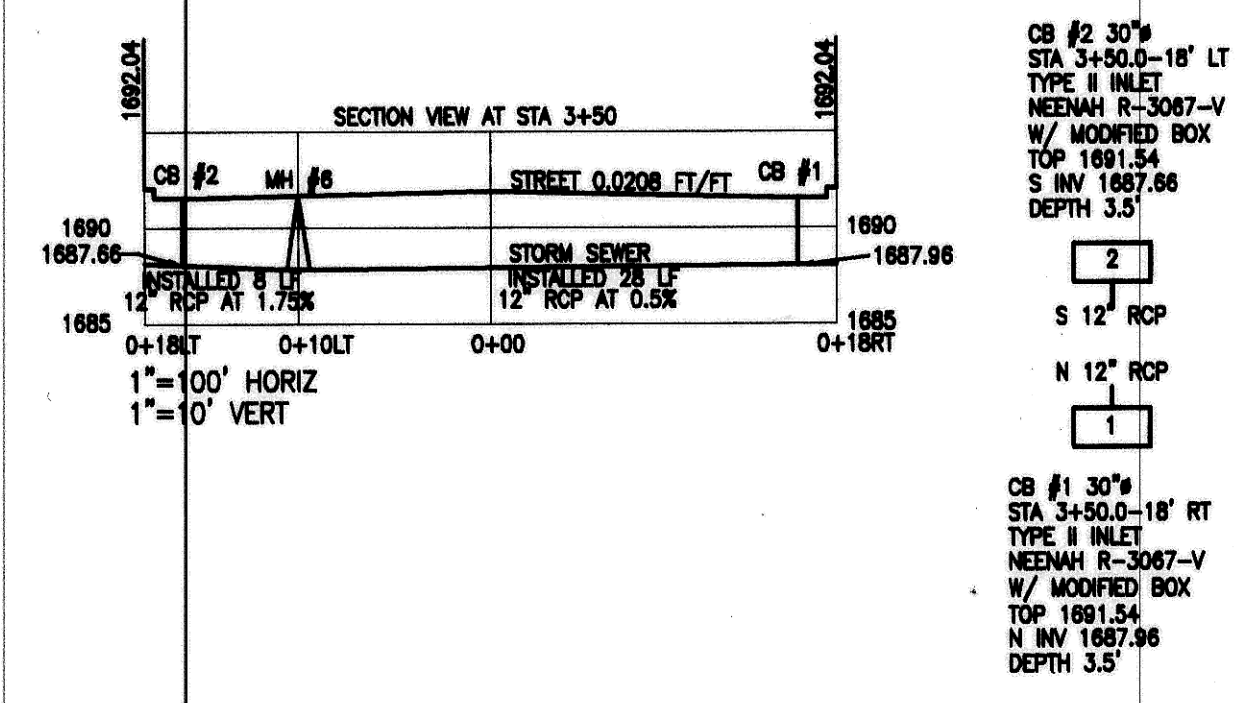
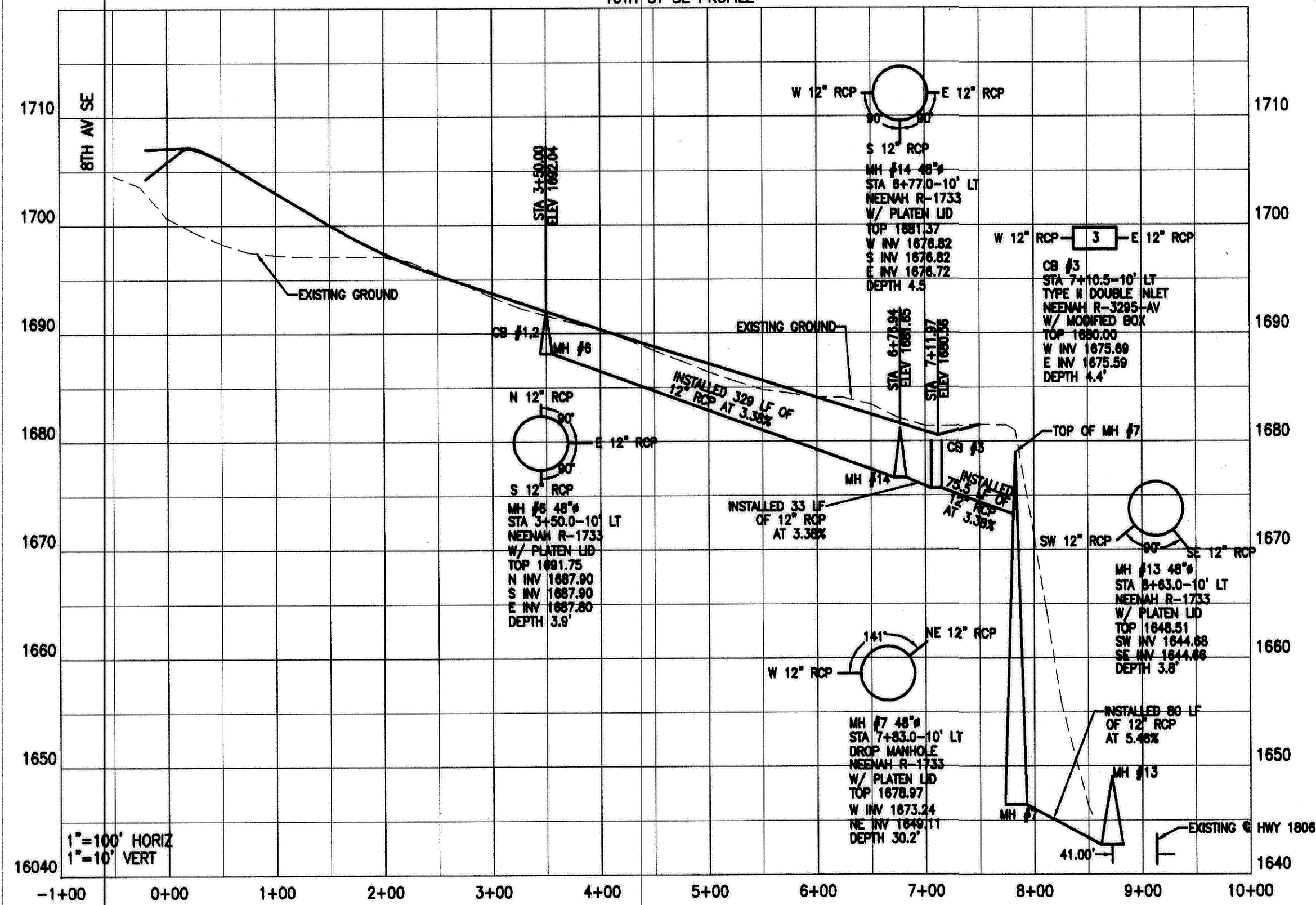
STORM SEWER PLANS 10TH STREET SE & ALLEY



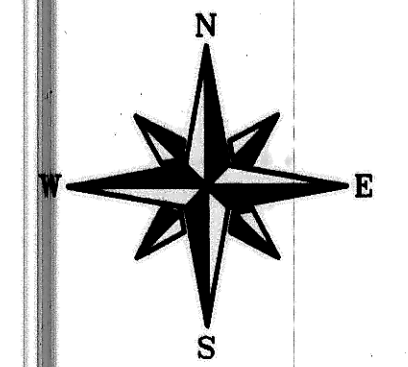
10TH STREET SE



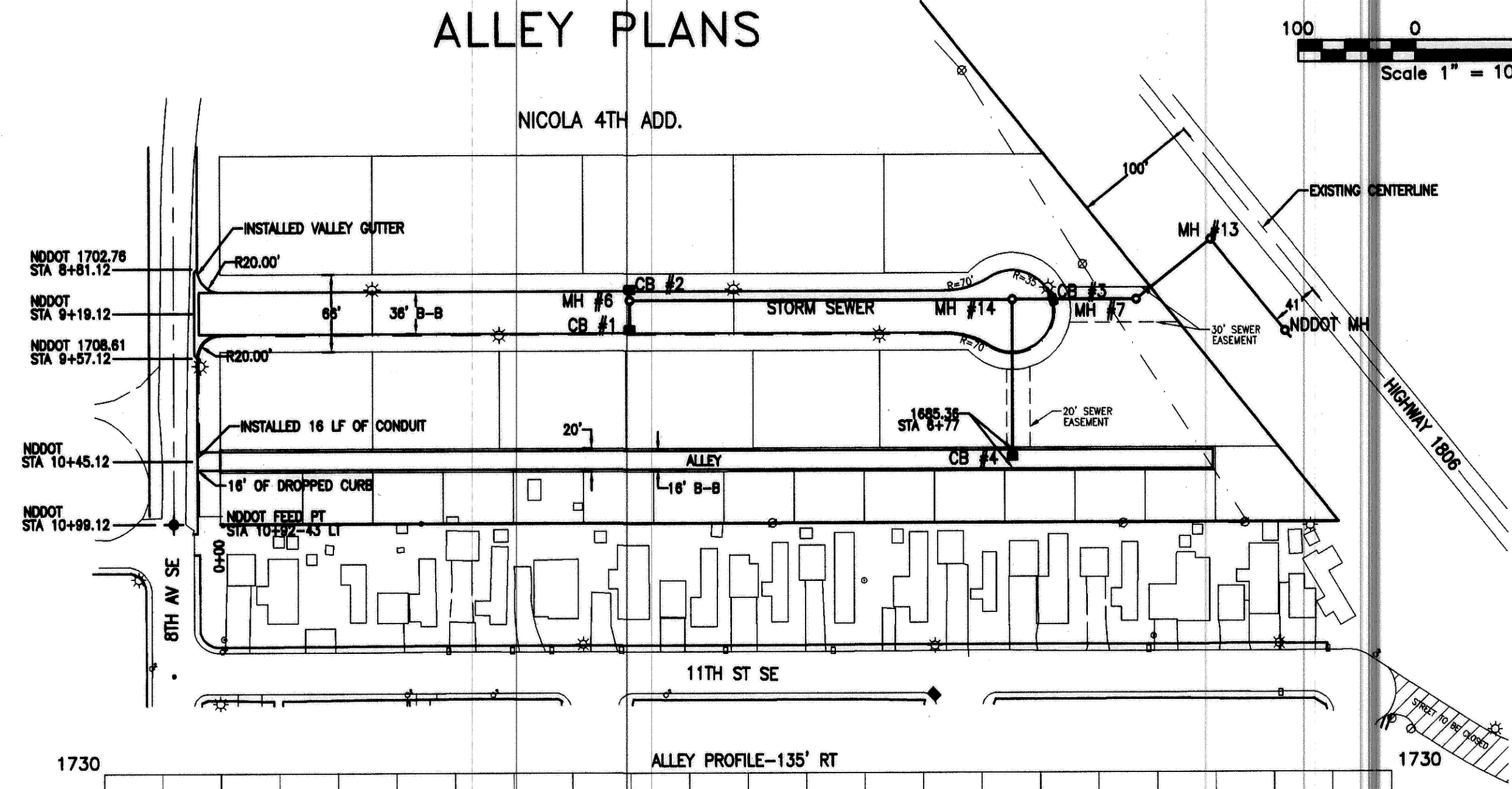
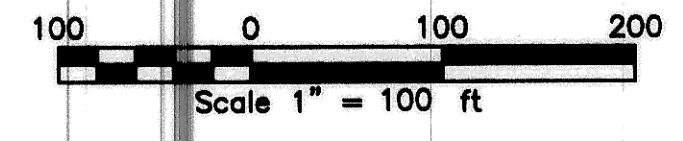
10TH ST SE PROFILE



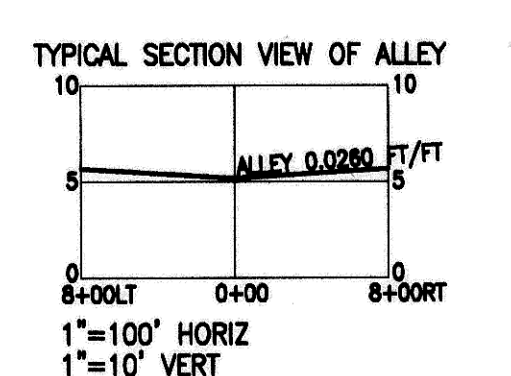
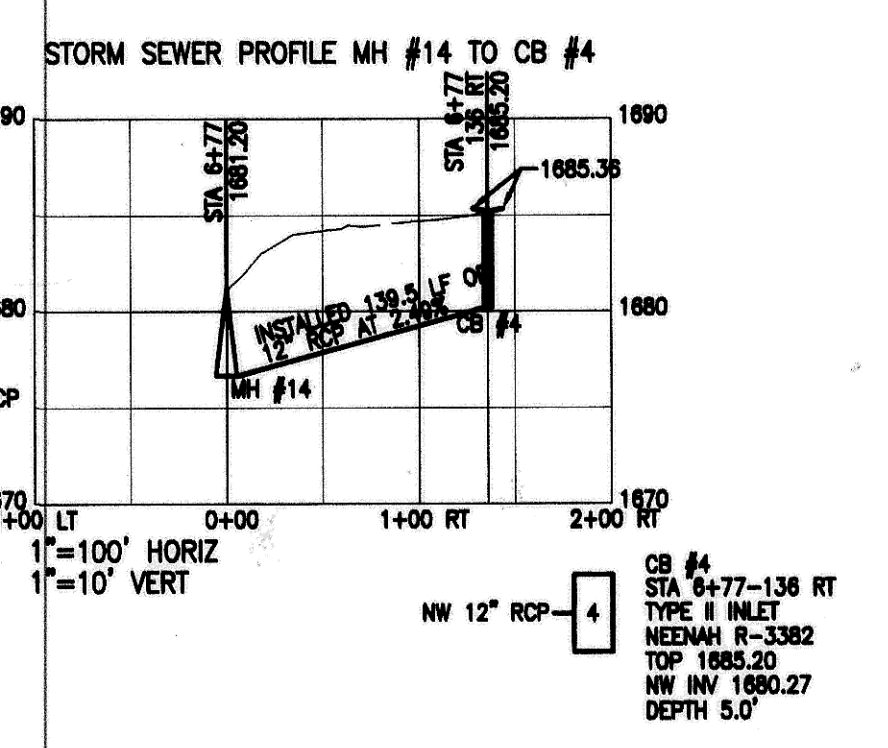
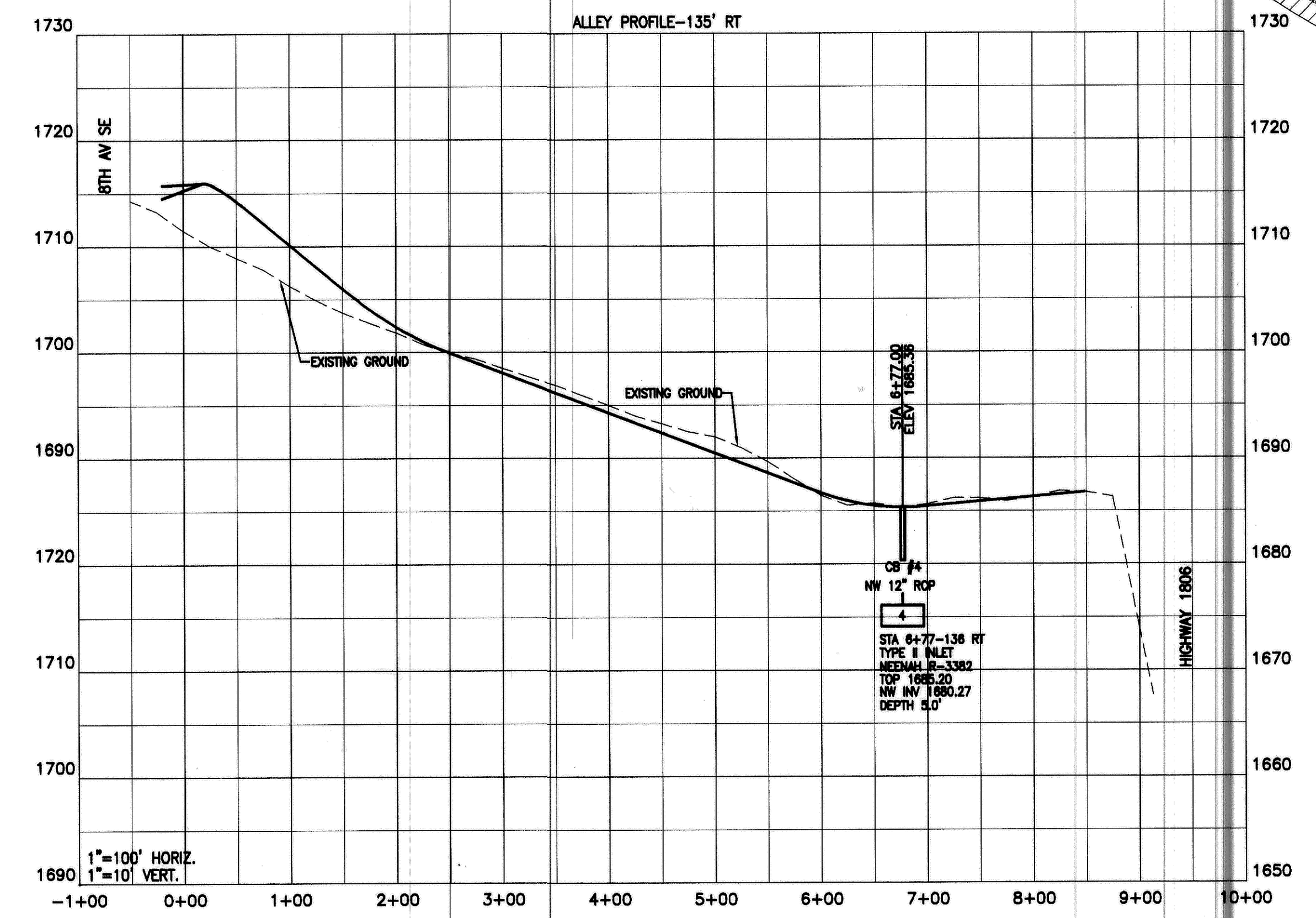
- LEGEND**
- PAVED ROAD
 - BUILDING
 - UTILITY POLE
 - LIGHT POLE
 - MANHOLE, CATCH BASIN
 - SIGN, FLAGPOLE
 - BOUNDARY
 - POWER
 - SANITARY SEWER
 - NEW ROAD



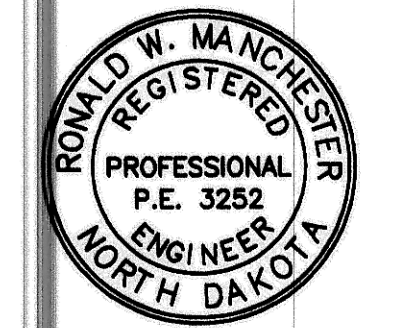
ALLEY PLANS



ALLEY PROFILE-135' RT



CAUTION
LOCATE ALL BURIED
UTILITIES BEFORE DIGGING
OVERHEAD POWER



TOMAN ENGINEERING COMPANY
CONSULTING CIVIL & ENVIRONMENTAL ENGINEERS
1001 10th St. S.E. • Bismarck, North Dakota 58103 • 701-223-4444

PROJECT: STORM SEWER
DISTRICT NO. 40 - AREA "A"
CITY PROJECT NO. 96-9

NO.	DATE	BY	REVISIONS
1	2/99	AR	AS-BUILT

TITLE: 10TH STREET SE & ALLEY

SHEET NUMBER
6
OF 11 SHEETS