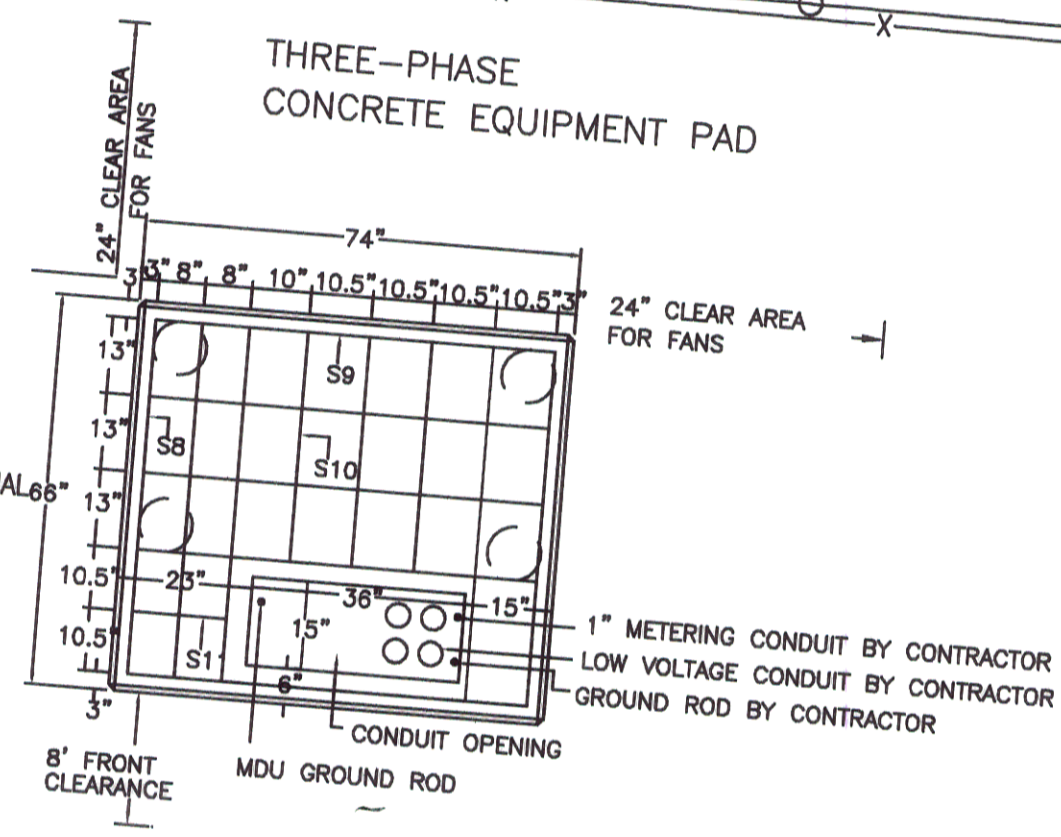
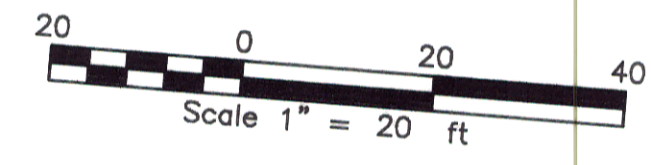
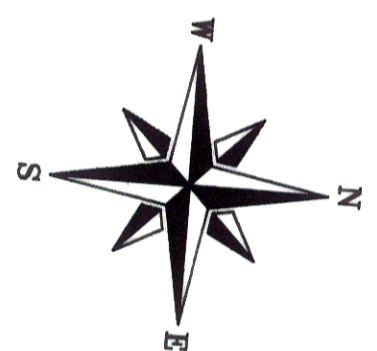
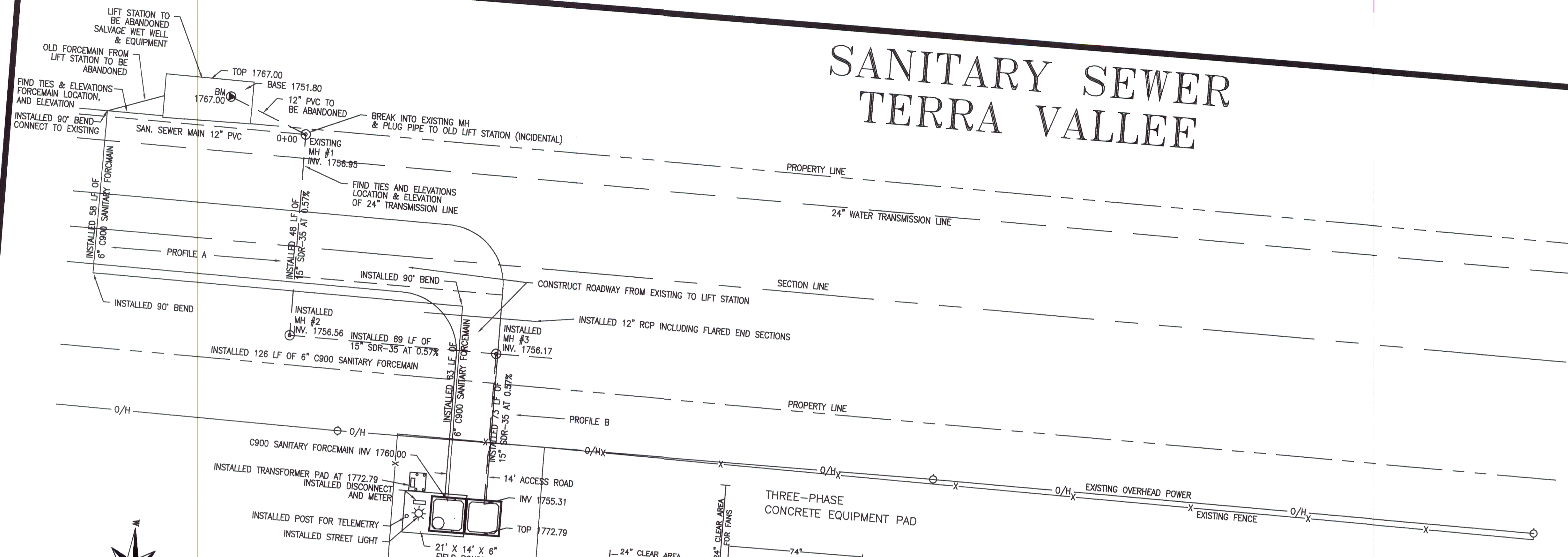
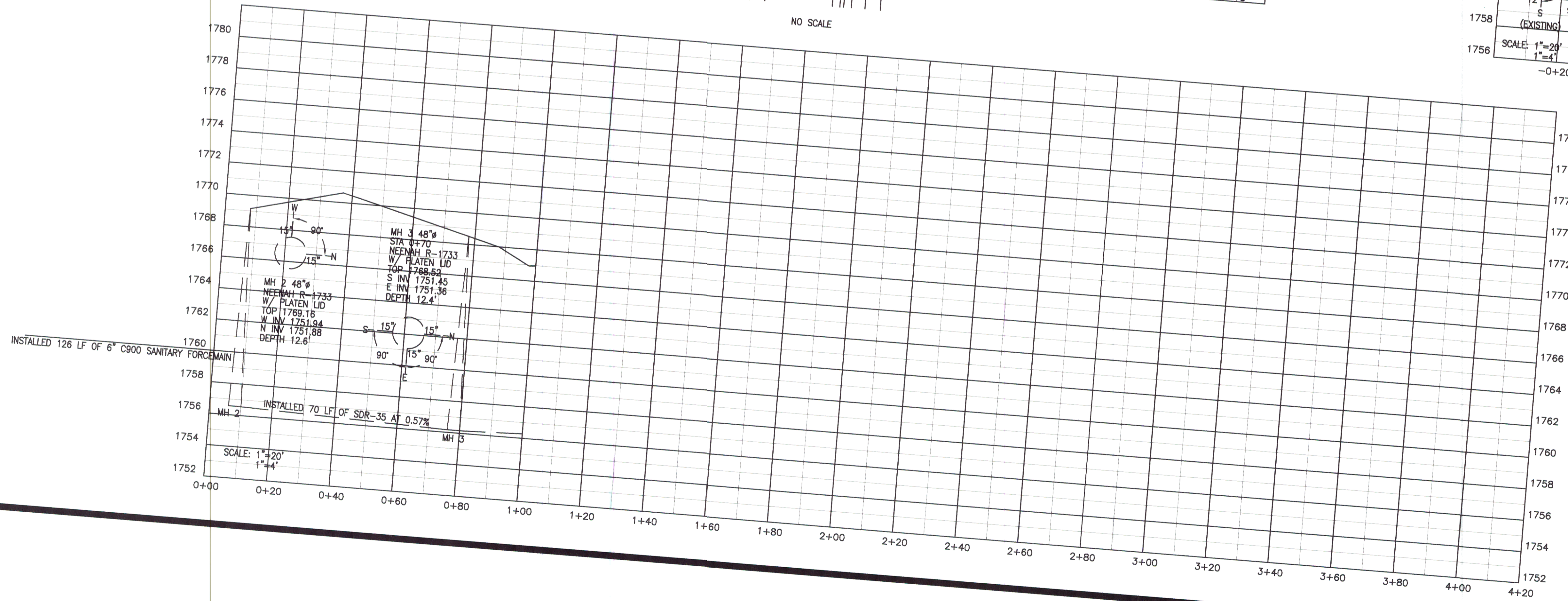
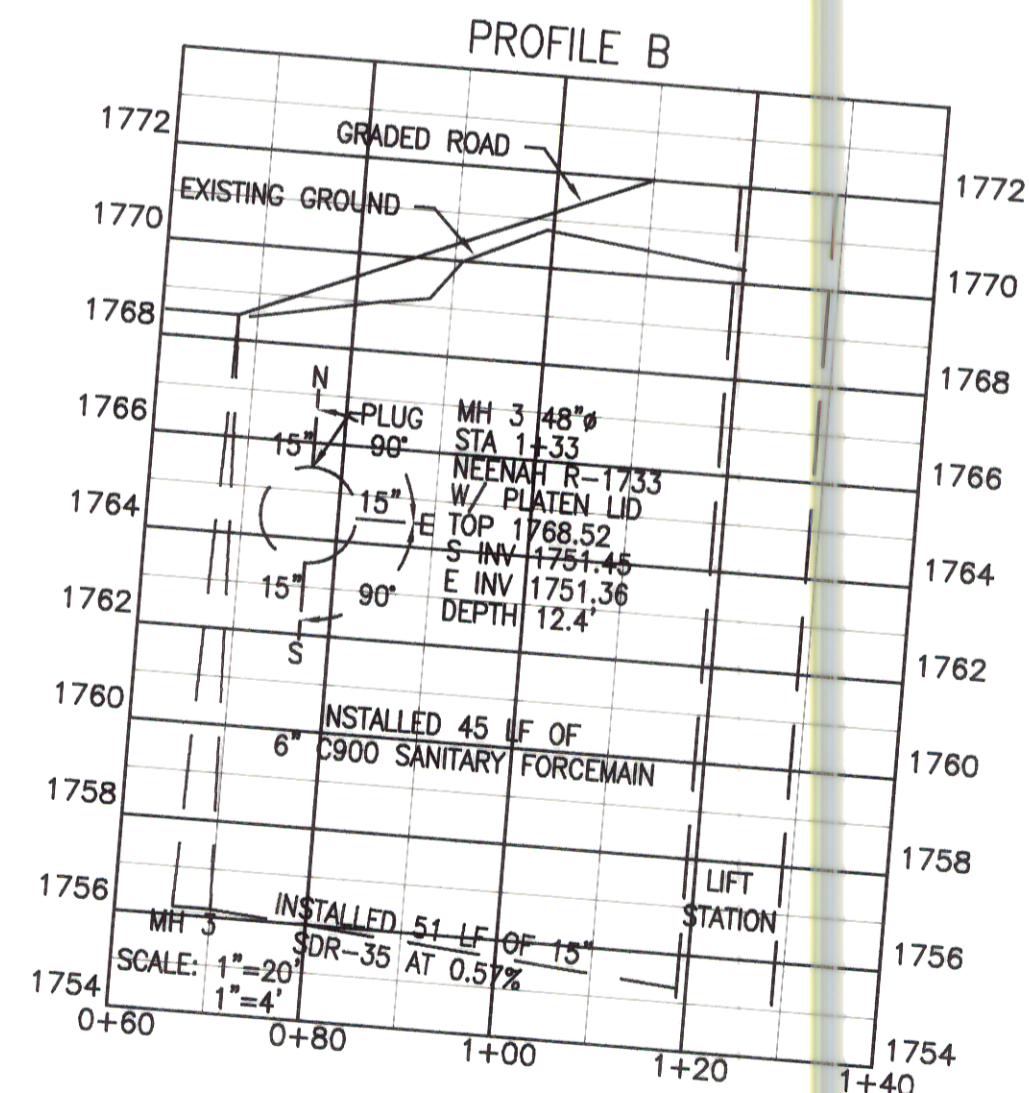
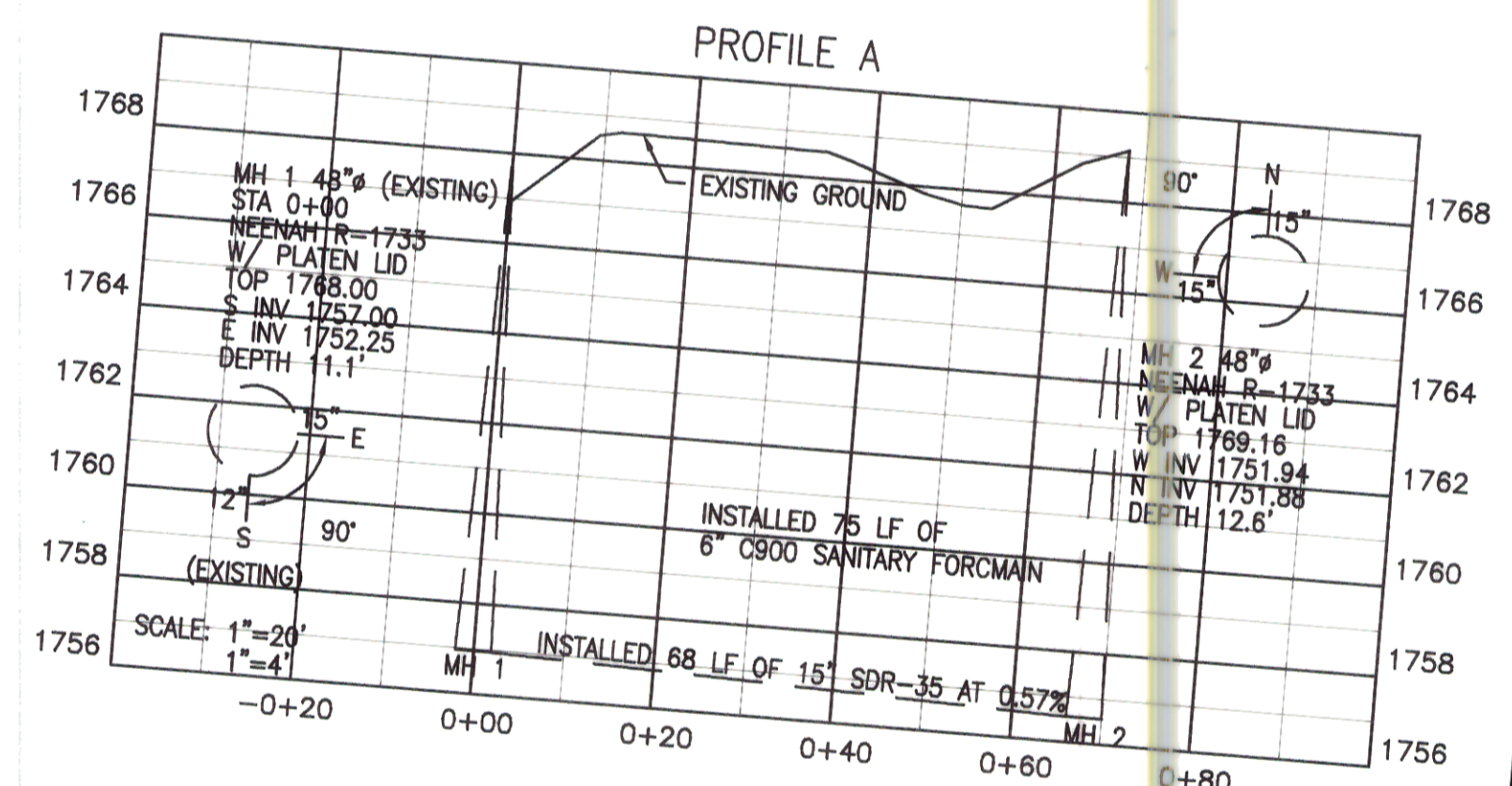


SANITARY SEWER TERRA VALLEE

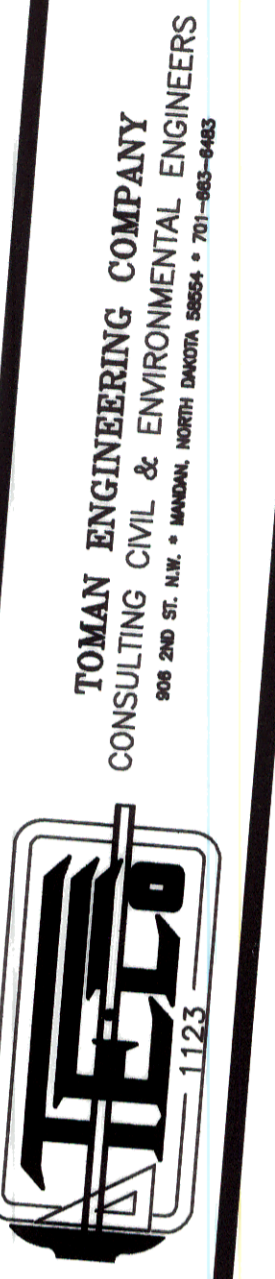


- LOCATION**
1. A TRANSFORMER SHOULD BE LOCATED AWAY FROM TRAFFIC AREAS OR PROTECTED WITH SUITABLE BARRIER SUCH AS CONCRETE FILLED PIPE, PROVIDED BY CONTRACTOR.
 2. CONSIDER OVERHEAD CLEARANCE WHEN LOCATING PAD
 3. COMPACT SOIL TO AVOID TILTING AND SETTLING. COLUMNS REQUIRED EXCEPT ON FIRM GROUND.
- NOTES:**
1. REINFORCING STEEL MUST BE SECURED WITH TIE WIRE AT ALL INTERSECTIONS.
 2. ALL EXPOSED EDGES AND CORNERS TO HAVE 1" CHAMFER.
 3. 1.117 CUBIC YARDS OF CONCRETE.
 4. LOW VOLTAGE CONDUIT BY CONTRACTOR MUST BE INSTALLED WITHIN 14" AREA NOTED.
 5. ENTIRE PAD MUST BE 5' FROM ANY BUILDING.

MARK	QUANTITY	SIZE	LENGTH
S8	5	1/2"	62'
S9	5	1/2"	70'
S10	3	1/2"	41'
S11	1	1/2"	18'



CAUTION
LOCATE ALL BURIED UTILITIES BEFORE DIGGING
OVERHEAD POWER



PROJECT: TERRA VALLEE SANITARY SEWER
DISTRICT NO. 40 - AREA "C"
CITY PROJECT NO. 96-9

NO.	AS-BUILTS	REVISIONS	BY	DATE	APPROVED BY	DATE
1			AR	2/99		

SHEET NUMBER

9