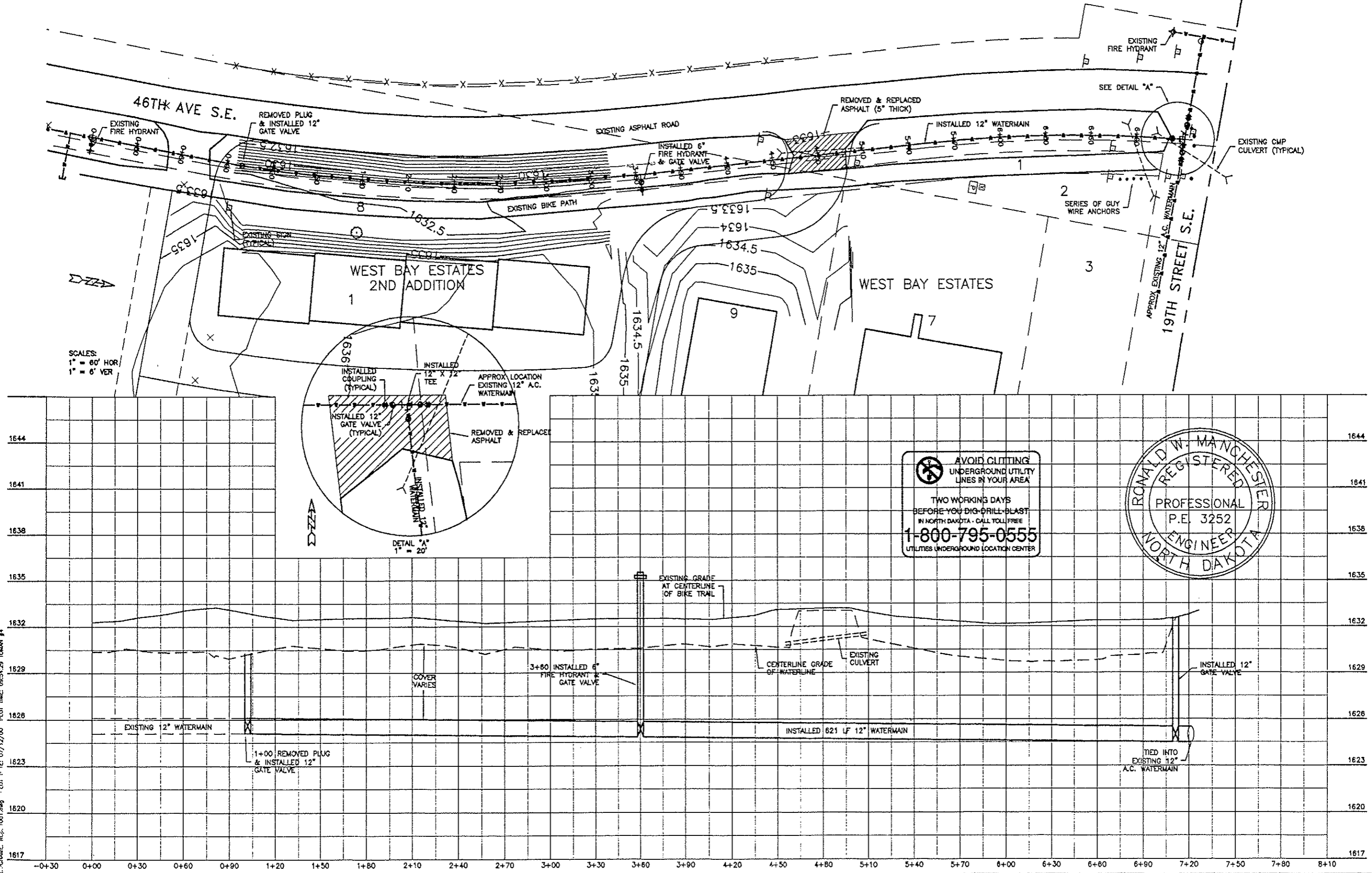
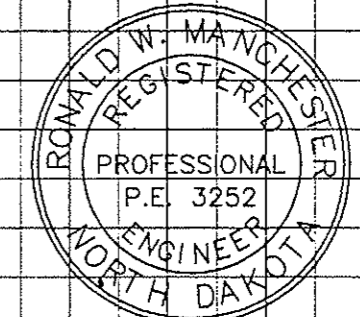


# AS BUILT 46TH AVENUE S.E. PLAN & PROFILE



**AVOID CLIPPING UNDERGROUND UTILITY LINES IN YOUR AREA**

TWO WORKING DAYS BEFORE YOU DIG-DRILL-BLAST IN NORTH DAKOTA - CALL TOLL FREE 1-800-795-0555 UTILITIES UNDERGROUND LOCATION CENTER

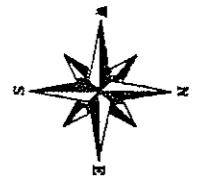
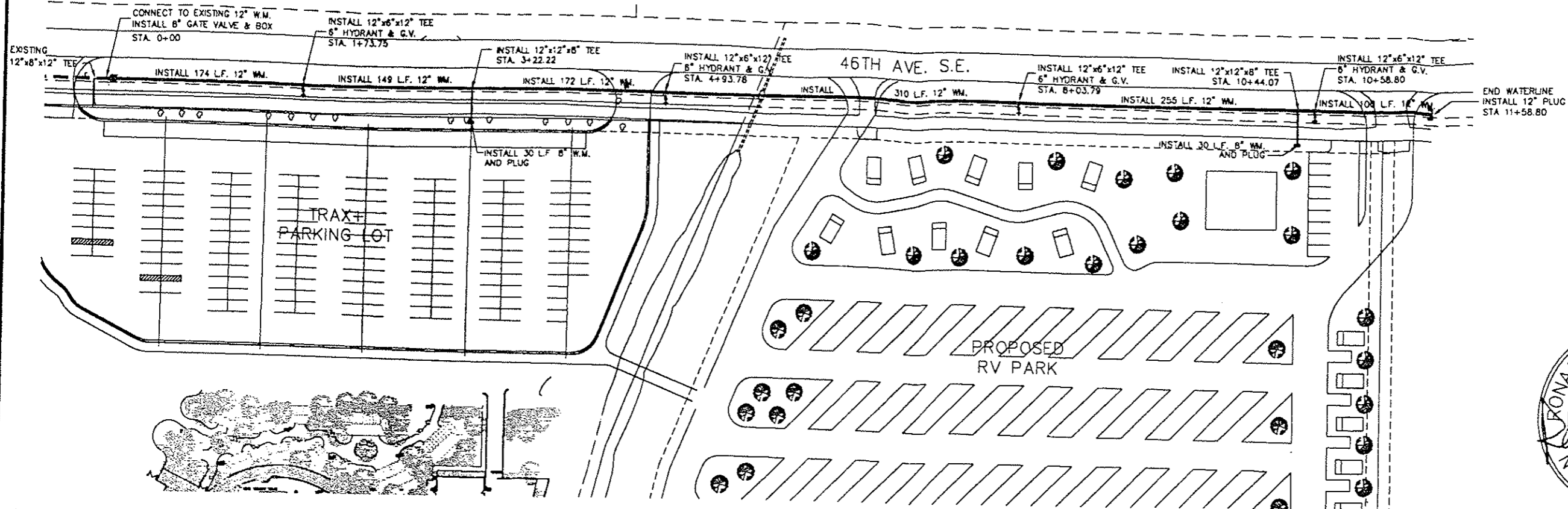


TOMAN ENGINEERING COMPANY  
CONSULTING CIVIL & ENVIRONMENTAL ENGINEERS  
808 2ND ST. N.W. (701) 885-0465

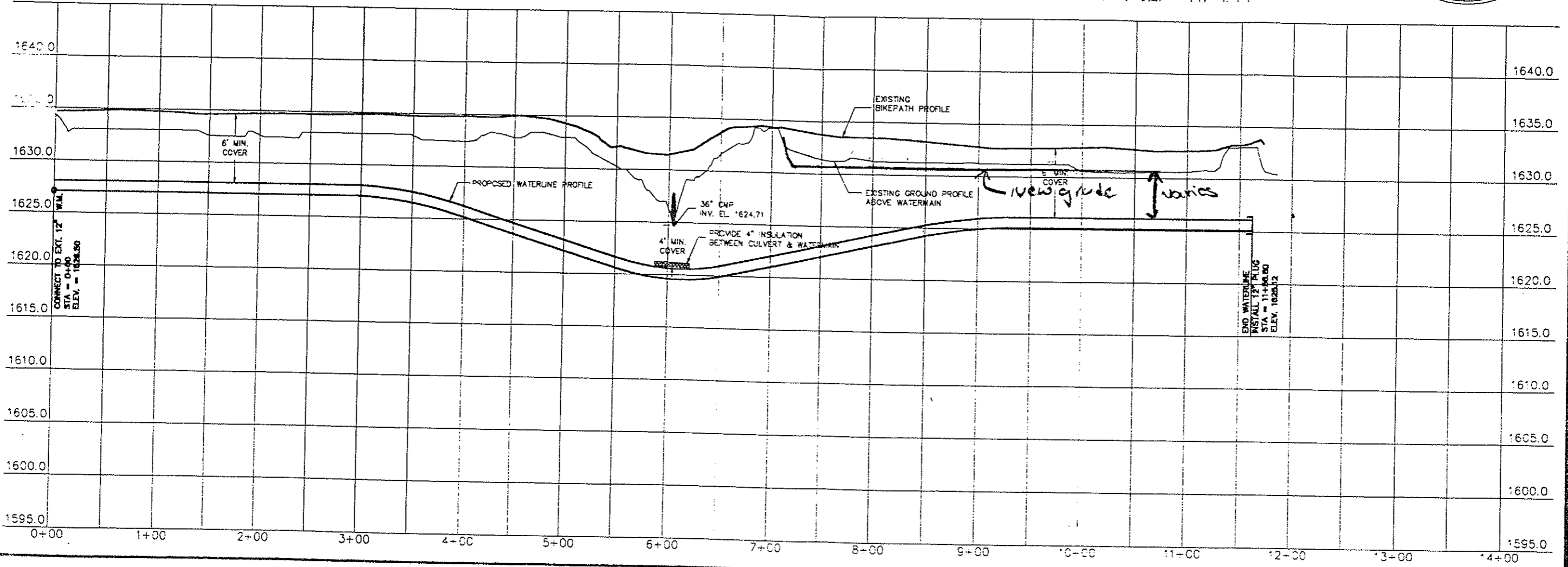
PROJECT: WATERMAIN IMPROVEMENT DIST. NO. 12  
46TH AVE S.E. SOUTH OF 19TH ST. S.E.  
PLAN & PROFILE SHEET

NO.	DATE	BY	REVISIONS
1	01/12/00	RTM	ISSUE FOR PERMITS
2	09/19/00	RTM	REVISED PER COMMENTS

SHEET NUMBER  
**2**  
OF 3 SHEETS



SCALES:  
1" = 100' HOR  
1" = 10' VER



TOMAN ENGINEERING COMPANY  
CONSULTING CIVIL ENGINEERS  
200 2ND ST. S.E. • MANDAN, NORTH DAKOTA 58544 • 701-462-3443

PROJECT: 46TH AVE. & MCKENZIE DRIVE WATERLINE MANDAN, NORTH DAKOTA

NO.	REVISIONS	DATE	BY	AR
1	CHANGED WATERLINE PROFILE	10/17/12	RM	AR

TITLE: SHEET NUMBER 1

8