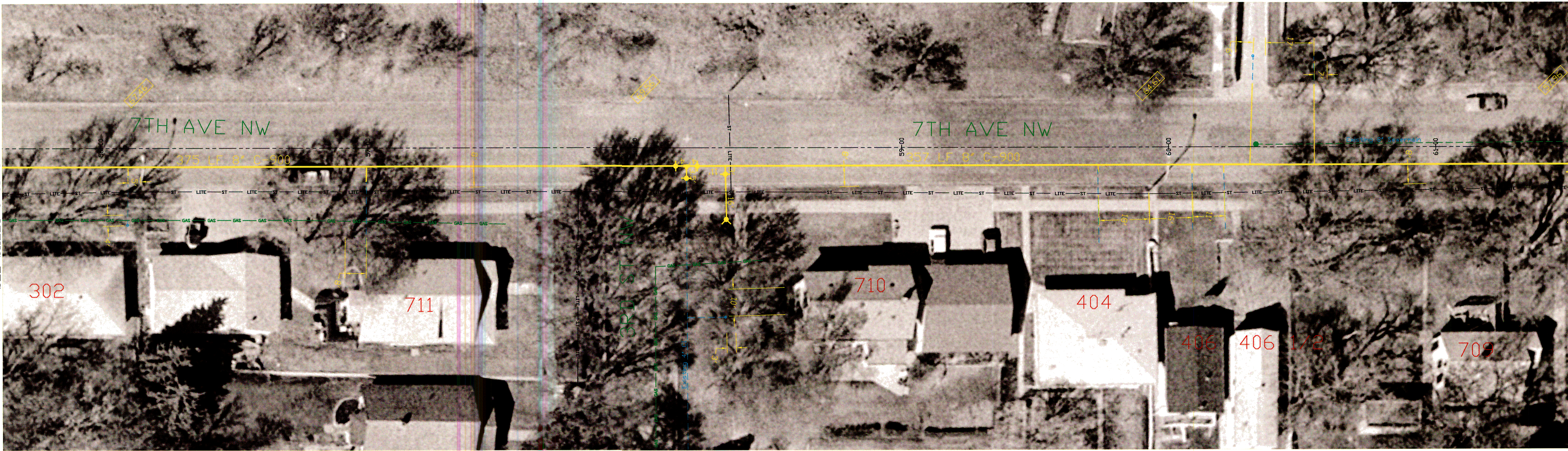
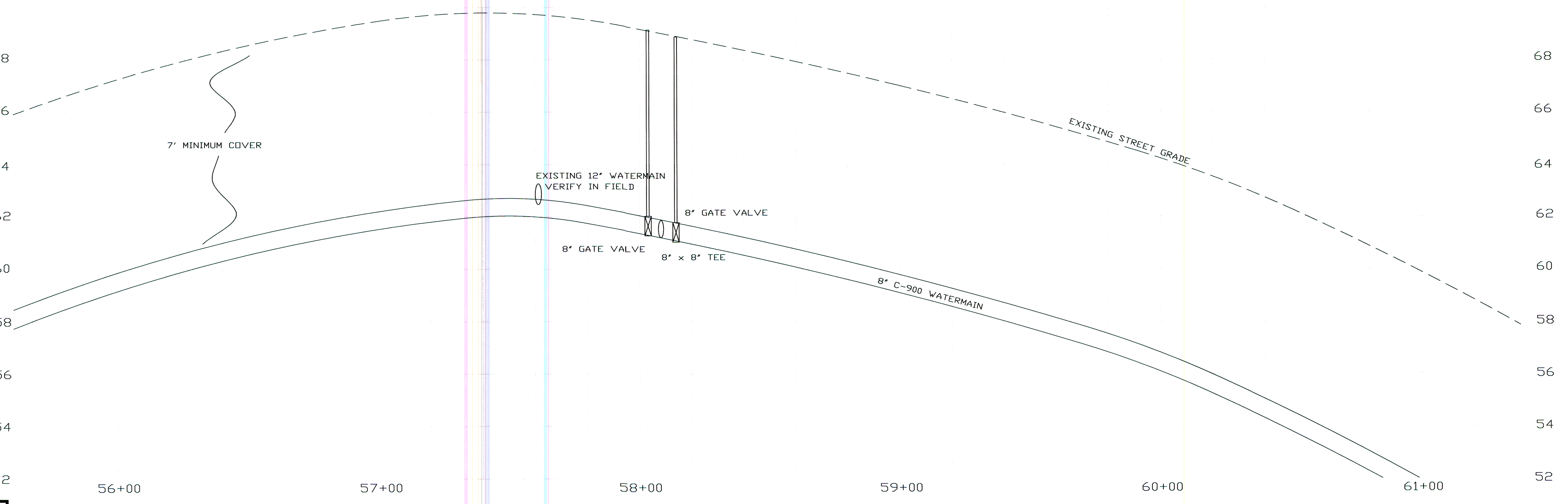
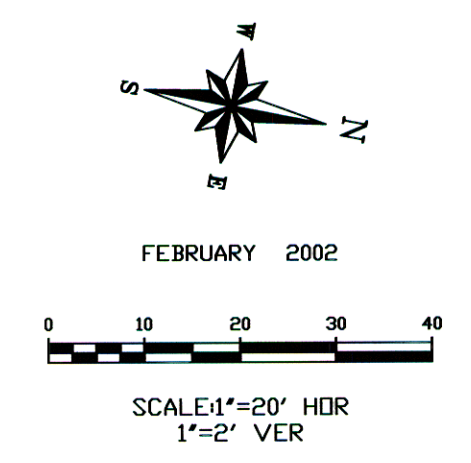


SEE SHEET 5 OF 8

SEE SHEET 7 OF 8



--- Warning --- All utilities are to be located before digging.  
Overhead utilities may be present.



City of Mandan		Description	Date	Drawn By	Checked By
		Asphalt	10/02	jlw	jlw
<b>Watermain Replacement Project 2002-03</b>					
7TH AVE NW - FROM 2ND ST TO 4TH ST					
City Eng. T LITTLE	Drawn By: J L W				
Approved By: T R L	Checked By: T R L				
Project No. 2002-03	Date: 2/5/2002				
District No. N/A	Scale: AS SHOWN				