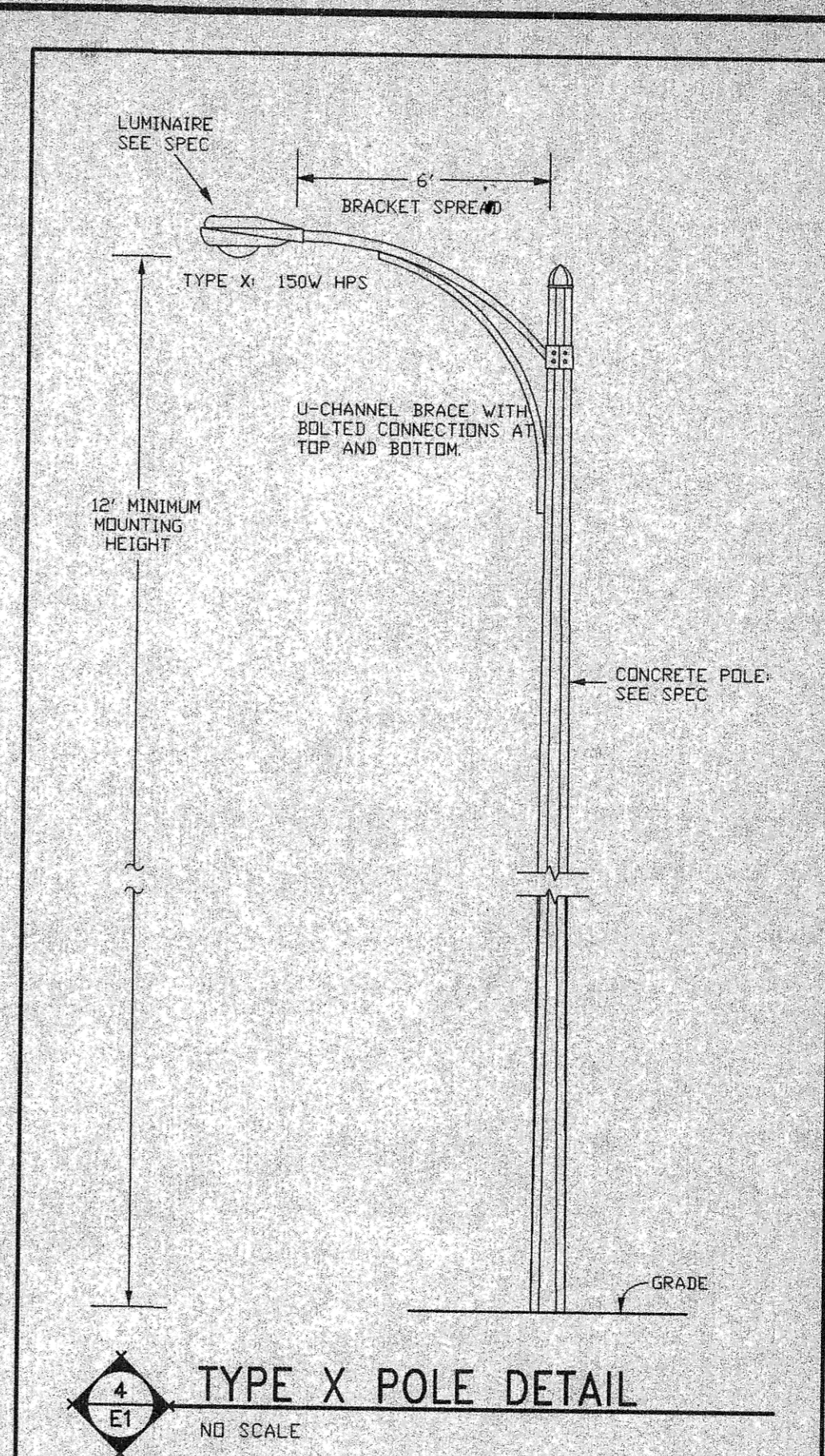
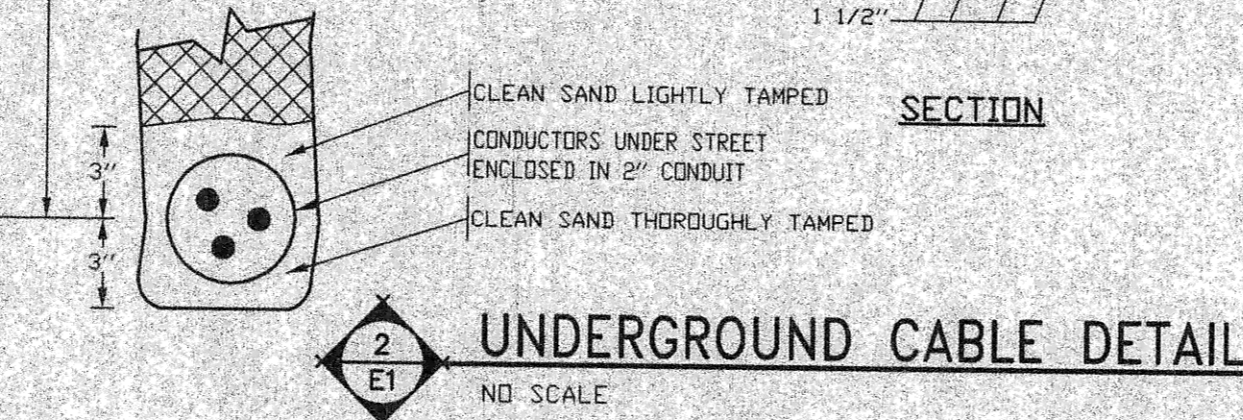
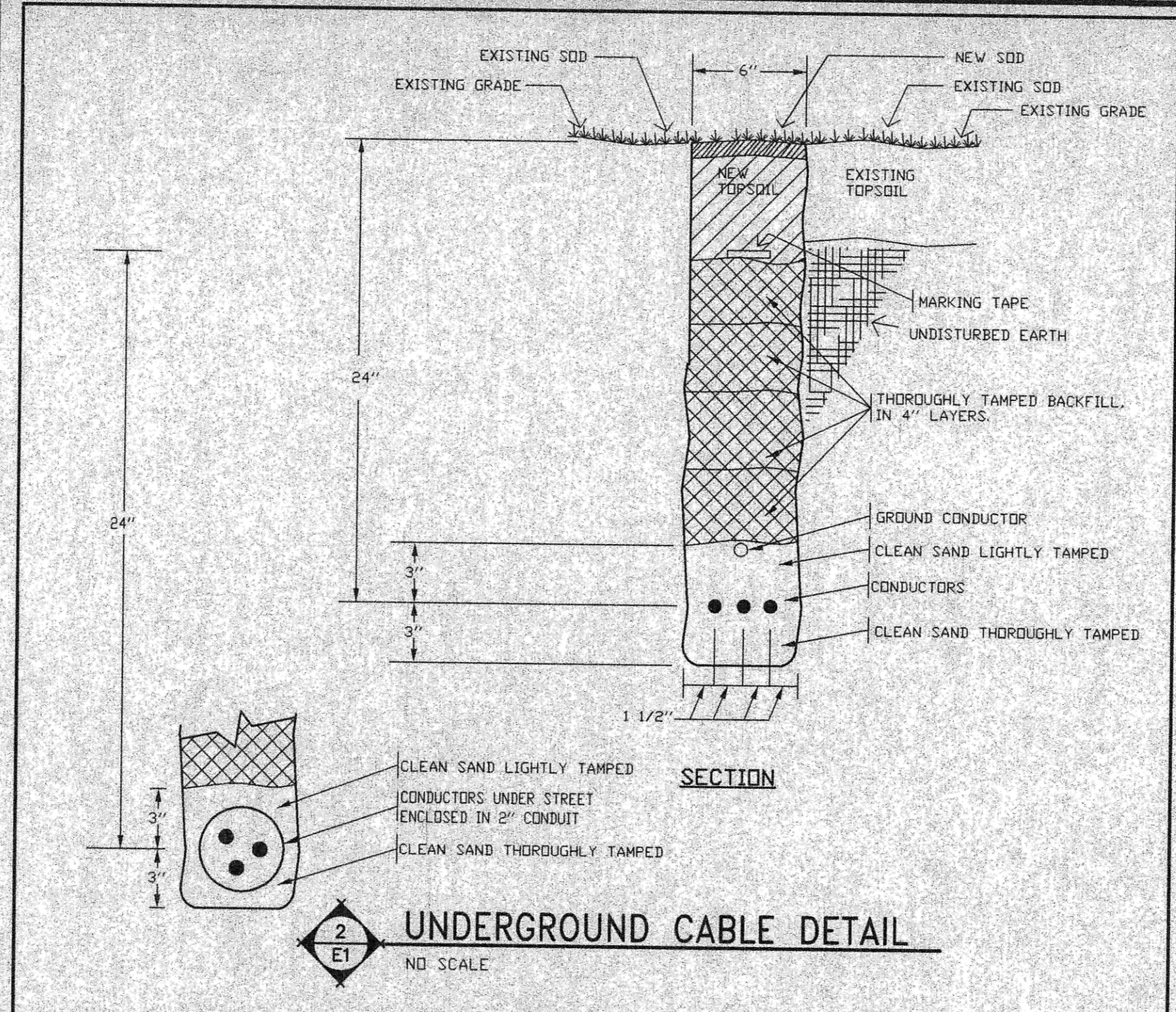
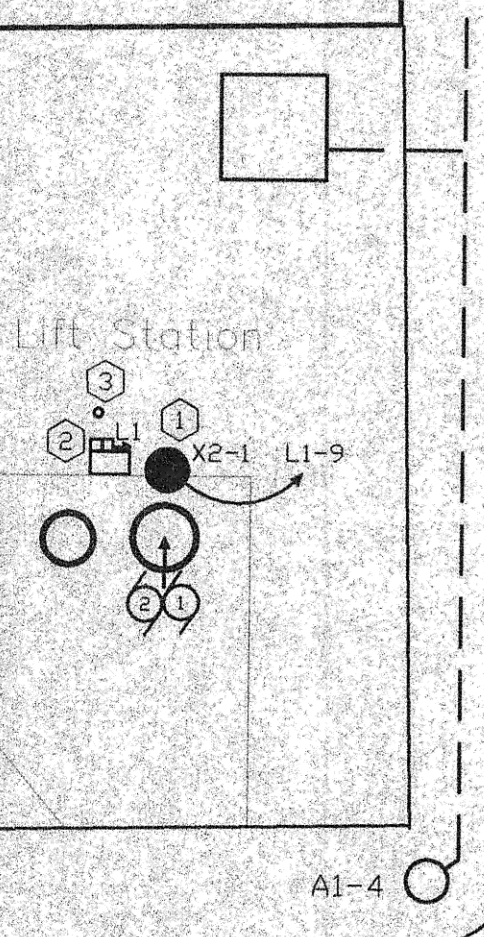


Addition Line

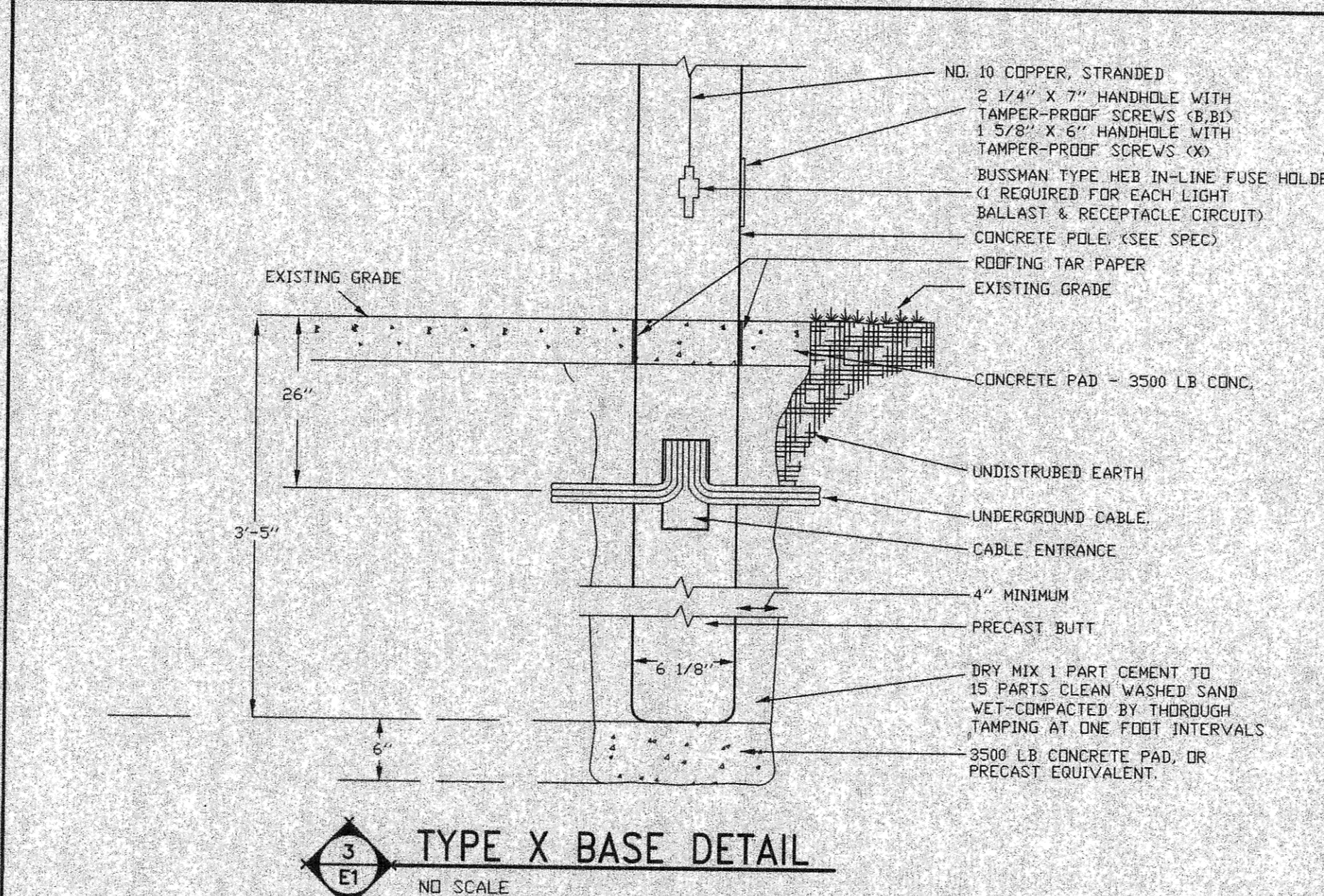
BAY SHORE BEND SE

10' UTILITY ESMT.

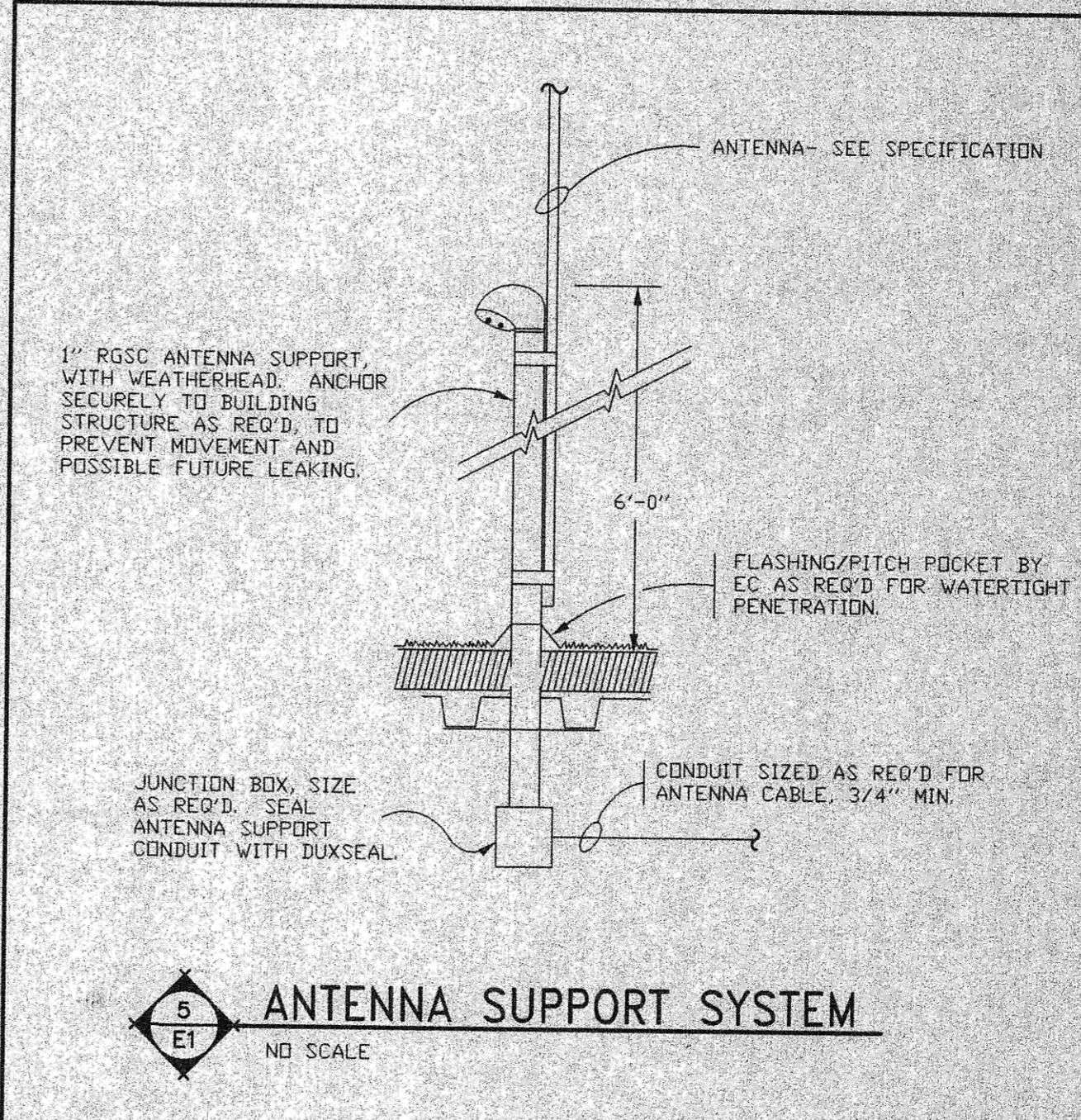
LAKEWOOD DR SE



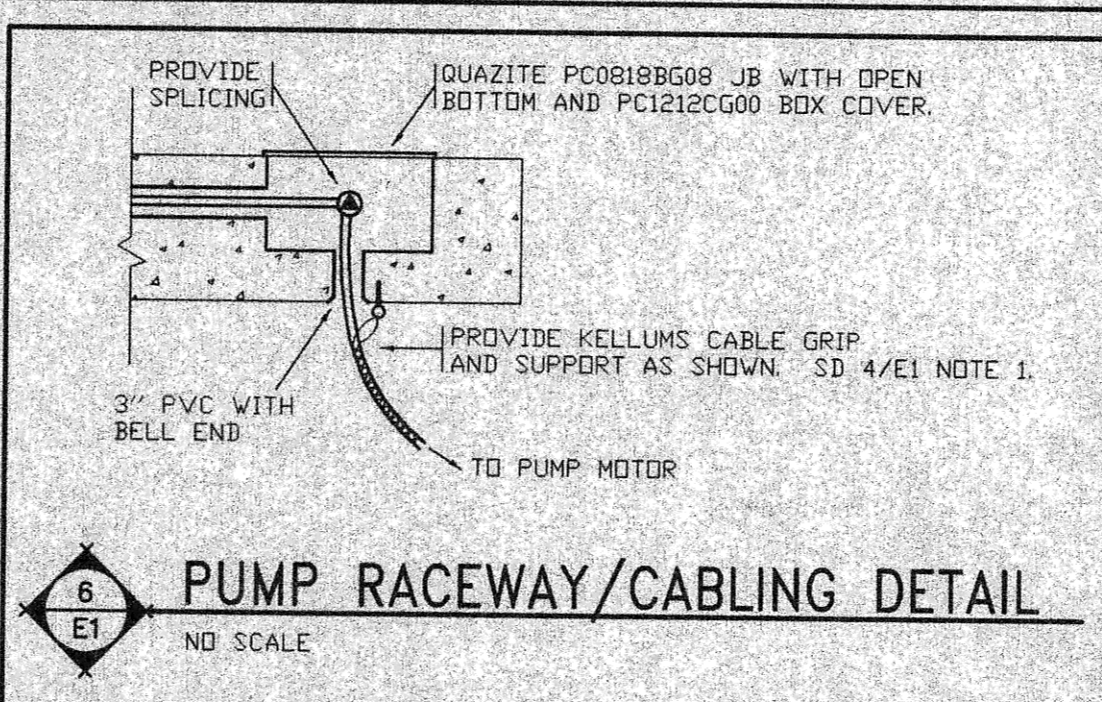
TYPE X POLE DETAIL



TYPE X BASE DETAIL



ANTENNA SUPPORT SYSTEM



PUMP RACEWAY/CABLING DETAIL

ELECTRICAL PLAN

- NOTES: DETAIL 1/E1
1 PLACE POLE SUCH THAT LUMINAIRE IS DIRECTLY ABOVE LIFT STATION MANHOLE.
2 CONTROL PANEL CABINET, MOUNT RTU PANEL, BREAKER PANEL, AND IRRIGATION CONTROL PANEL ON BACK OF CONTROL PANEL.
3 RTU ANTENNA SEE SPECIFICATION.

- SYMBOLS & LEGEND
EXISTING STREET LIGHT
NEW STREET LIGHT UNIT
FEEDPOINT - EXISTING
EXISTING JUNCTION BOX
JUNCTION BOX - NEW
UNDERGROUND CONDUCTOR (DIRECT BURIAL)
UNDERGROUND CONDUCTOR (CONDUIT ENCASED)
NUMBER OF CONDUCTORS (PLUS GROUND CONDUCTOR)
EXISTING UNDERGROUND CIRCUITRY

WARRANTY/ DISCLAIMER
The design represented in these plans are in accordance with established practices of civil engineering.
SAFETY NOTICE TO CONTRACTOR
In accordance with generally accepted construction practices the contractor will be solely and completely responsible for conditions of the job site, including safety of all persons and property during performance of the work.
NOTICE TO CONTRACTOR
The location of existing underground utilities are shown in an approximate way only and have not been independently verified by the owner or its representatives.

03561
SWENSON, HAGEN & CO. P.C.
Lakewood Harbor 2nd Addition SEWER IMPROVEMENTS-LIFT STATION ADDITION
SEWER IMPROVEMENT PROJECT 2003-09
DISTRICT # 27 SHEET E1 OF 2
MANDAN, ND JUNE 25, 2003
DESIGN: JJB DRAFT: JJB

Record Drawing