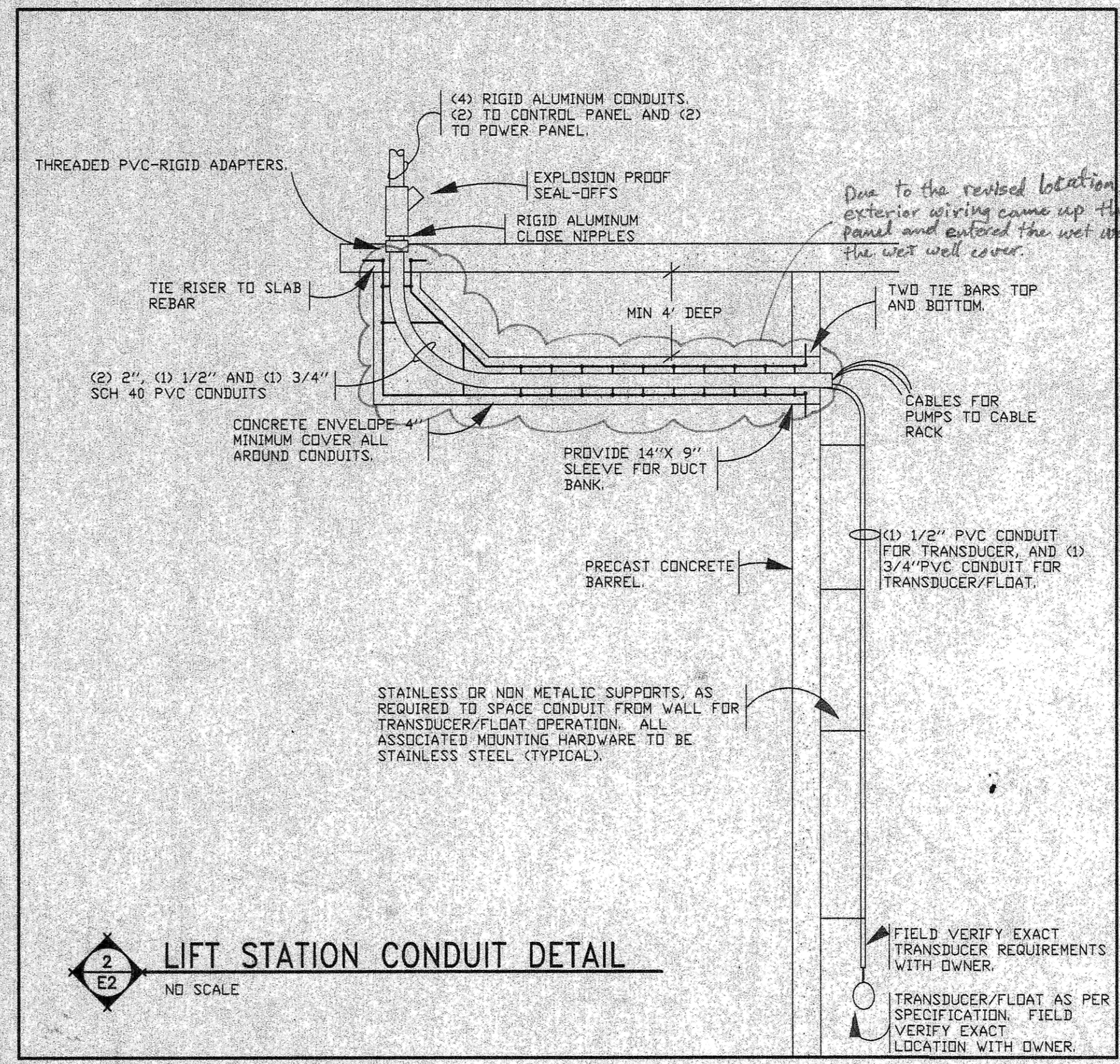
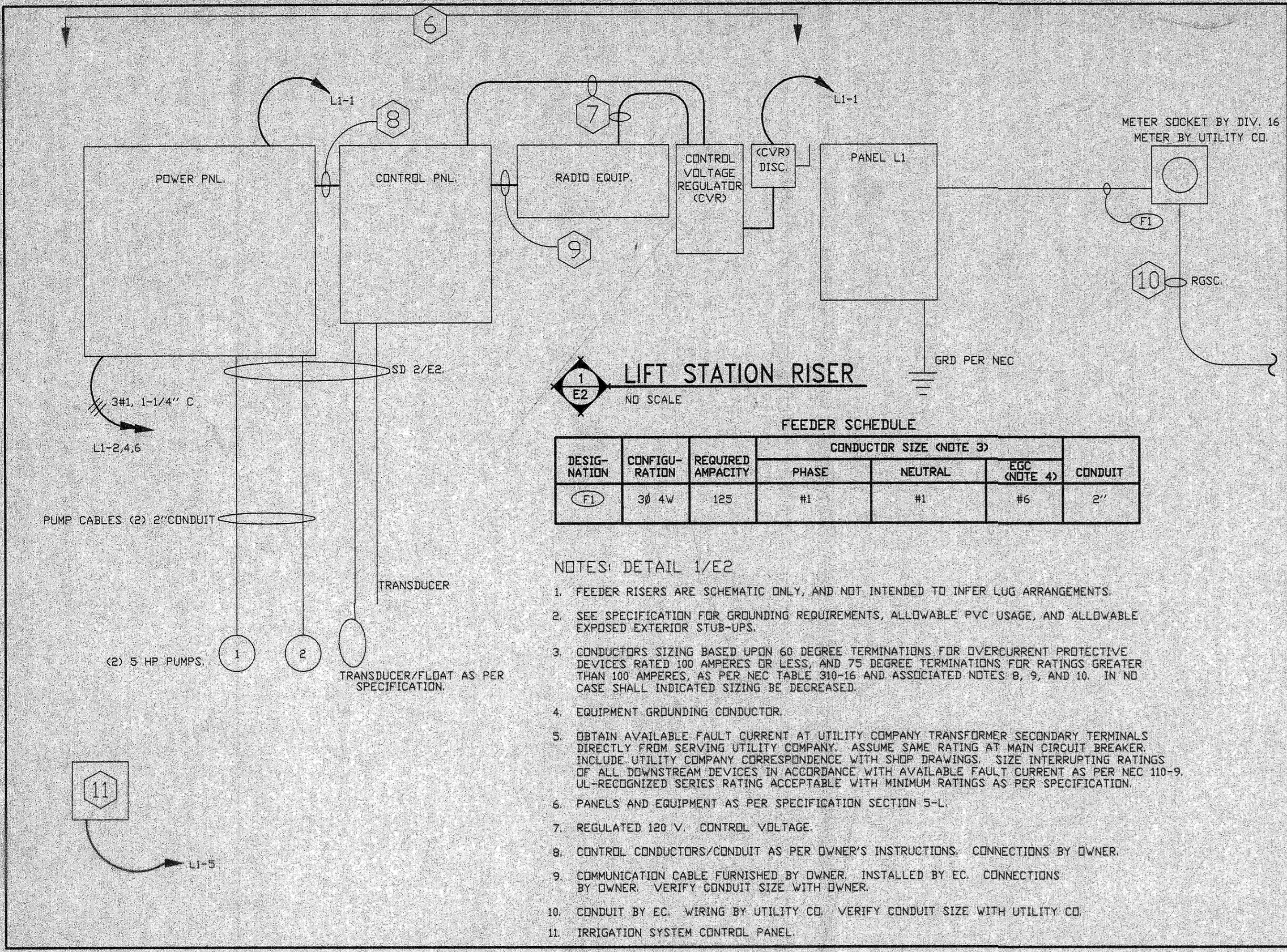


WARRANTY/ DISCLAIMER
 The designs represented in these plans are in accordance with established practices of civil engineering. However, neither Swenson, Hagen & Co. nor its personnel can or do warranty these plans as constructed except in the specific cases where Swenson, Hagen & Co. personnel inspect and control the physical construction on a full time basis.

SAFETY NOTICE TO CONTRACTOR
 In accordance with generally accepted construction practices the contractor will be solely and completely responsible for conditions of the job site, including safety of all persons and property during performance of the work. This requirement will apply continuously and not be limited to normal business hours.

NOTICE TO CONTRACTOR
 The location of existing underground utilities are shown in an approximate way only and have not been independently verified by the owner or its representatives. The Contractor shall determine the exact location of all existing utilities before commencing work, and agree to be fully responsible for any and all damages which might be occasioned by the Contractor's failure to exactly locate and preserve any and all underground utilities. Underground locates shall be requested by using the "One Call" number 1-800-795-0555.



MOTOR & EQUIPMENT SCHEDULE

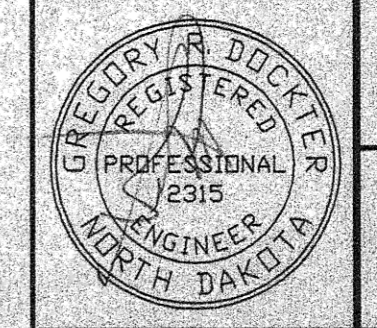
DESIG.	EQUIPMENT SERVED	CHARACTERISTICS			DISCONNECT (BY EC)	CONTROLLER (BY GC)	CONTROL INITIATING DEVICE			NOTE
		HP	VOLT	PHASE			DEVICE	FURN	MTD	
1	P-1	5	208	3	INCLUDED WITH STARTER	CONTROL PANEL	GC	GC	EC	1
2	P-2	5	208	3	INCLUDED WITH STARTER	CONTROL PANEL	GC	GC	EC	1

NOTES:
 1. PUMP SUBMERGED IN MANHOLE.

PANEL H SCHEDULE
 120/208 VOLTS 3Ø 4W 225 A. MLD SURFACE MOUNTED
 SIEMENS SENTRON SERIES NEMA 3R/12 RATED

CIRCUIT DESCRIPTION	POLES	AMPS	CKT	#	CKT	AMPS	POLES	CIRCUIT DESCRIPTION
CONTROL POWER	1	20	1	A	2	45	3	PUMPS
RECEPTACLES	1	20	3	B	4	-	-	PUMPS
IRRIGATION	1	20	5	C	6	-	-	PUMPS
SPARE	1	20	7	A	8	-	-	SPACE
SPARE	1	20	9	B	10	-	-	SPACE
SPARE				C	12	-	-	SPACE
SPARE				A	14	-	-	SPACE
SPARE				B	16	-	-	SPACE
LIGHTING	1	20	17	C	18	-	-	SPACE

03561



SWENSON, HAGEN & CO. P.C.
 PLANNING CIVIL ENGINEERING SURVEYING
 SITE DESIGN CONSTRUCTION MANAGEMENT
 909 BASIN AVE. P.O. BOX 1168 (701) 225-8600
 BISMARCK, N.D. 58504 FAX (701) 225-8606
 E-mail: sheng@shgata.com

Lakewood Harbor 2nd Addition
 SEWER IMPROVEMENTS-LIFT STATION ADDITION

SEWER IMPROVEMENT PROJECT 2003-09
 DISTRICT # 27 SHEET E2 OF 2
 MANDAN, ND JUNE 25, 2003

DESIGN: JJB DRAFT: JJB

Record Drawing