

SCALE 1" = 50'  
Overall Schematic  
NOT FOR CONSTRUCTION

# CONSTRUCTION PLANS FOR WATER & SEWER IMPROVEMENTS IN MEADOWS FIRST ADDITION Mandan, North Dakota

### DESIGN ENGINEER'S CERTIFICATE

I, GREGORY J. FESER, A REGISTERED PROFESSIONAL ENGINEER IN THE STATE OF NORTH DAKOTA, HEREBY CERTIFY THAT THE PLANS FOR WATER & SANITARY SEWER IMPROVEMENT PROJECT NO. 2004-07, MANDAN, NORTH DAKOTA WERE PREPARED UNDER MY SUPERVISION AND ARE COMPLETE AND CORRECT TO THE BEST OF MY KNOWLEDGE AND BELIEF.



*Gregory J. Feser*  
GREGORY J. FESER, P.E.  
REGISTERED PROFESSIONAL ENGINEER  
NORTH DAKOTA REGISTRATION NO. 4680

### APPROVAL OF CITY ENGINEER

I, THOMAS LITTLE, CITY ENGINEER FOR THE CITY OF MANDAN, NORTH DAKOTA, HEREBY APPROVE THESE PLANS FOR WATER & SANITARY SEWER IMPROVEMENT PROJECT NO. 2004-07, MANDAN, NORTH DAKOTA AS SHOWN ON THE ACCOMPANYING PLANS.

*Thomas Little*  
THOMAS LITTLE, P.E.  
REGISTERED PROFESSIONAL ENGINEER  
CITY ENGINEER  
MANDAN, NORTH DAKOTA

### DEVELOPER

MITZEL BUILDERS, INC.

### OWNER

CITY OF MANDAN PUBLIC WORKS

### DESIGN ENGINEER

SWENSON, HAGEN & CO.

### SHEET INDEX

TITLE PAGE	SHEET 1
34th AVE. NW	SHEET 2
LEWIS ROAD	SHEET 3

### WARRANTY / DISCLAIMER

The designs represented in these plans are in accordance with established practices of civil engineering. However, neither Swenson, Hagen & Co. nor its personnel can or do warranty these plans as constructed except in the specific cases where Swenson, Hagen & Co personnel inspect and control the physical construction on a full time basis.

### SAFETY NOTICE TO CONTRACTOR

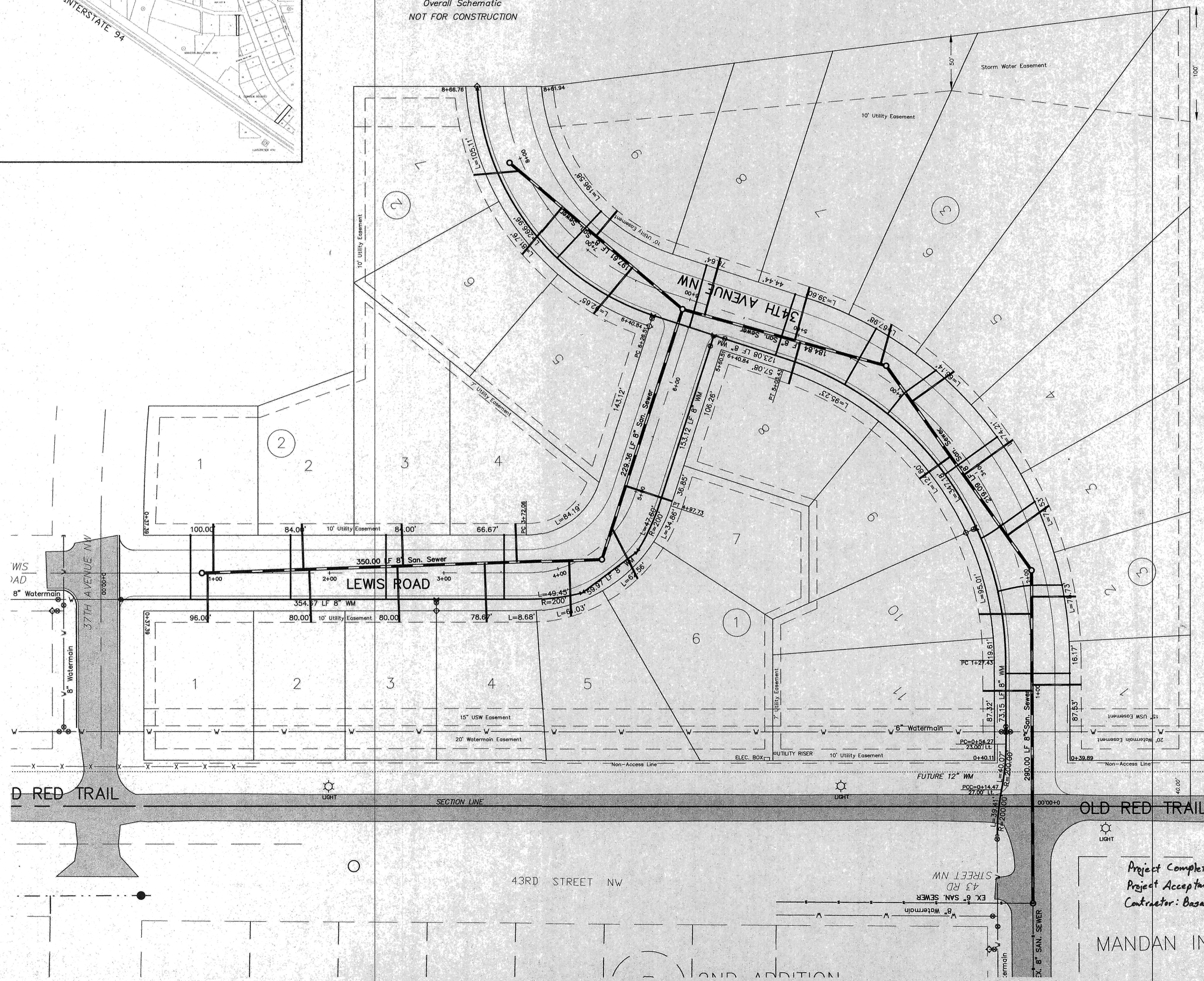
In accordance with generally accepted construction practices the Contractor will be solely and completely responsible for conditions of the job site, including safety of all persons and property during performance of the work. This requirement will apply continuously and not be limited to normal business hours.

### UTILITY NOTICE TO CONTRACTOR

The location of existing underground utilities are shown in an approximate way only and have not been independently verified by the Owner or its representatives. The Contractor shall determine the exact location of all existing utilities before commencing work, and agrees to be fully responsible for any and all damages which might be occasioned by the Contractor's failure to exactly locate and preserve any and all underground utilities. Underground locates can be made by using the "One Call" number 1-800-795-0555.

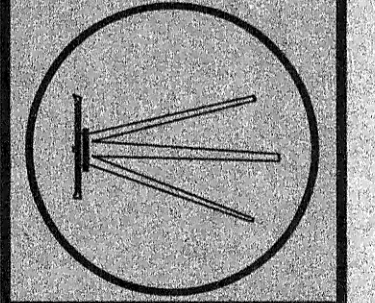
Project Completion: July 2004  
Project Acceptance: July 20, 2004  
Contractor: Basaraba Excavating

MANDAN INDUS



WATER & SANITARY SEWER  
IMPROVEMENT PROJECT NO. 2004-07

SWENSON, HAGEN & CO. P.C.  
PLANNING CIVIL ENGINEERING SURVEYING  
SITE DESIGN CONSTRUCTION MANAGEMENT  
809 BASIN AVE P.O. BOX 1135  
BISMARCK, N.D. 58504  
(701) 223-2800  
FAX (701) 223-2606  
sheng@swensonhagen.com



DRAWN BY: JLG  
CHECK BY: GJF  
DATE: 4-21-04  
FILE DESC:  
COMPUTER FILE:  
SURVEY FILE:

SHEET  
1 OF 3

Record Drawing