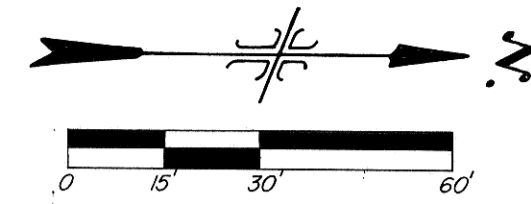


NOTE: 499 L.F. Existing 10" Sanitary Sewer to be televised prior to construction to establish location of existing service lines.

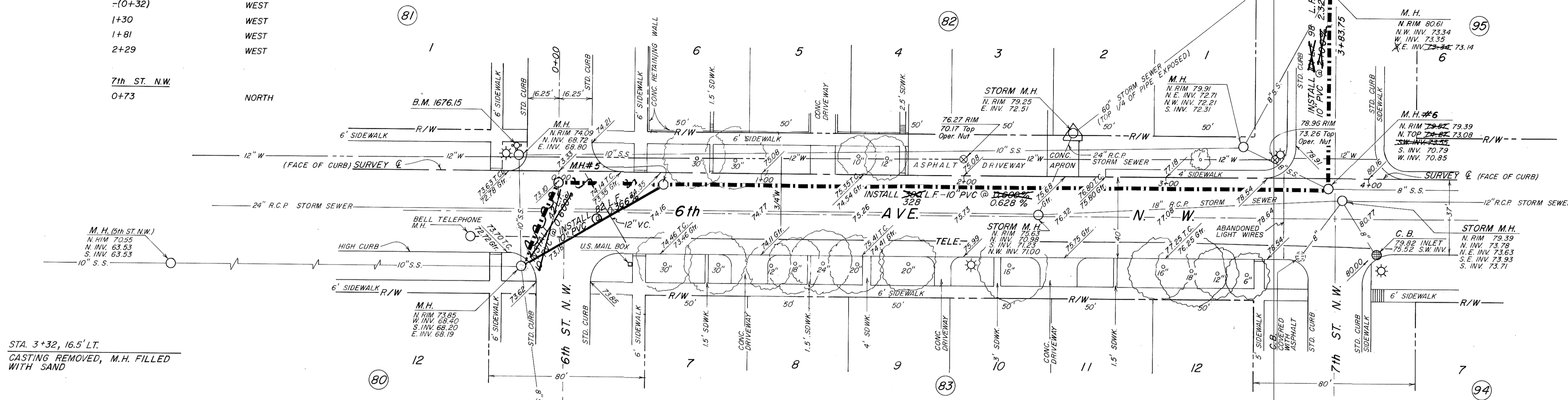
NOTE: Contractor to field verify location of all underground utilities prior to construction.



SEWER SERVICE LOCATIONS

6th AVE		
-(0+32)	WEST	
1+30	WEST	
1+81	WEST	
2+29	WEST	
7th ST. N.W.		
0+73	NORTH	

FIRST NORTHERN PACIFIC ADDITION



SUMMARY OF QUANTITIES	
10" PVC SEWER	508 L.F.
MANHOLES	1 EA.
ASPHALT REMOVAL	876 S.Y.
REPLACE ASPHALT	876 S.Y.
DROP MANHOLE	1 EA.
REMOVE & REPLACE C.B.G.	8 L.F.
RECONNECT SEWER SERVICES	5 EA.
4" SEWER SERVICE PIPE	112 L.F.
TELEVISION 10" PIPE	499 L.F.
CLEAN 10" SEWER	499 L.F.

REMOVE AND REPLACE ASPHALT			
70' X 9' =	70 SY.	14.5' X 12' =	19.3 SY.
44' X 6' =	29.3 SY.	15' X 11' =	18.3 SY.
19' X 8' =	16.9 SY.	14' X 7' =	10.9 SY.
25' X 8' =	22.2 SY.		
44' X 12' =	58.7 SY.		
37' X 14' =	57.6 SY.		
96' X 15' =	160 SY.		
88' X 18' =	176 SY.		
20' X 17' =	37.8 SY.		
44' X 15' =	73.3 SY.		
104' X 10' =	115.6 SY.		
9' X 10' =	10 SY.		

STA. 3+32, 16.5' LT.
CASTING REMOVED, M.H. FILLED WITH SAND

STA. 0-20, 8' LT.
CASTING REMOVED, M.H. FILLED WITH SAND

EXIST. M.H. STA. 0-18, 47' RT.
BREAK NEW 10" PVC INTO MANHOLE, (INCIDENTAL TO PROJECT)

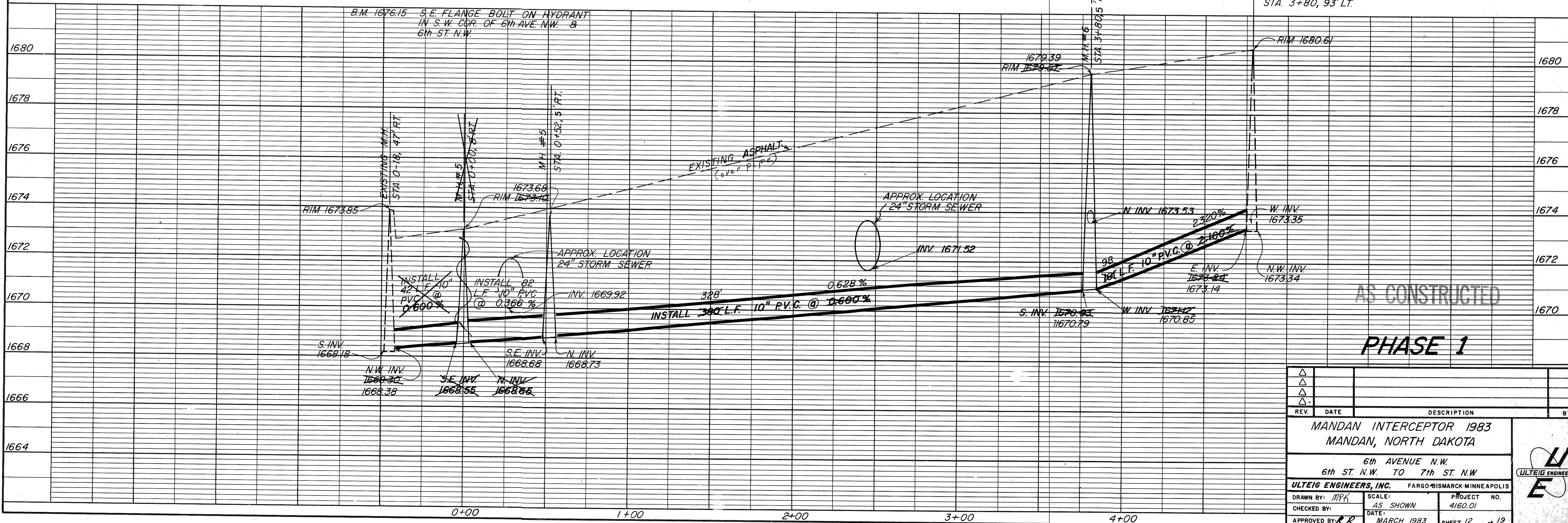
M.H.# 5 STA. 0+52, 5' RT.
INSTALL M.H.

REMOVE AND REPLACE ASPHALT
12' X 52' = 697 S.YDS.
9' X 18' = 18 SY.
9' X 18' = 18 SY.
9' X 6' = 6 SY.
9' X 6' = 6 SY.

REMOVE AND REPLACE CURB & GUTTER
BY M.H. STA. -(0+18), 47' RT. X L.F. 8
FOR SEWER SERVICES BOLT

M.H.# 6 STA. 3+80, 5' RT.
REMOVE EXISTING MANHOLE, SALVAGE TO BE DELIVERED TO CITY OF MANDAN (INCIDENTAL)
INSTALL NEW DROP M.H. PLUG 8" LINE TO SW. 6" PVC. DROP PIPE

EXIST. M.H. STA. 3+80, 93' LT.
BREAK NEW 10" PVC INTO M.H., PLUG 8" LINE TO SOUTHEAST AND INSTALL NEW INVERT (INCIDENTAL TO PROJECT) AND SHELF



AS CONSTRUCTED
PHASE 1

REV.	DATE	DESCRIPTION	BY

MANDAN INTERCEPTOR 1983
MANDAN, NORTH DAKOTA

6th AVENUE N.W.
6th ST. N.W. TO 7th ST. N.W.

ULTEIG ENGINEERS, INC. FARGO-BISMARCK-MINNEAPOLIS

DRAWN BY: MPK SCALE: AS SHOWN PROJECT NO. 4160.01
CHECKED BY: DATE: MARCH 1983 SHEET 12 of 19
APPROVED BY: CR