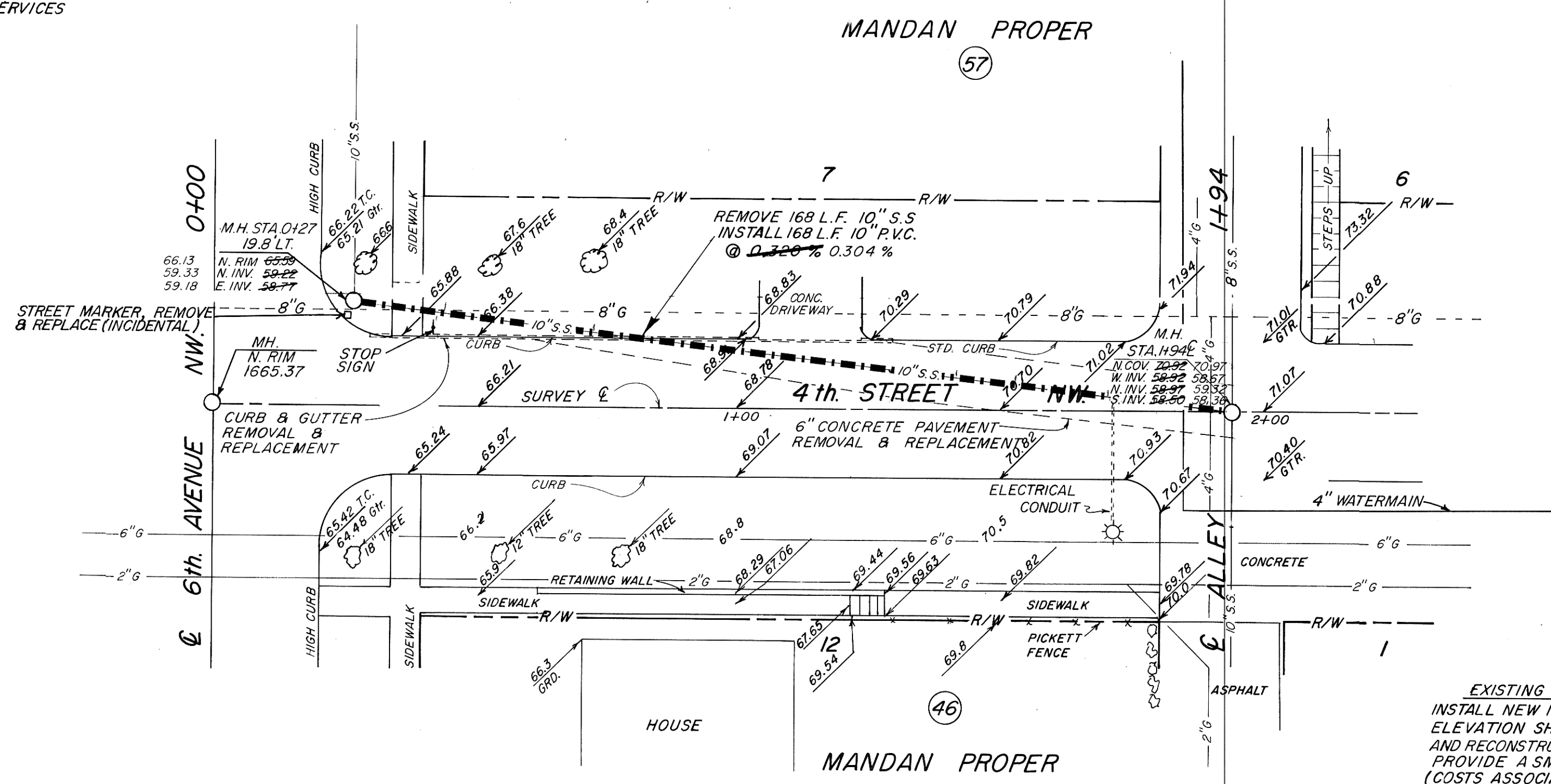
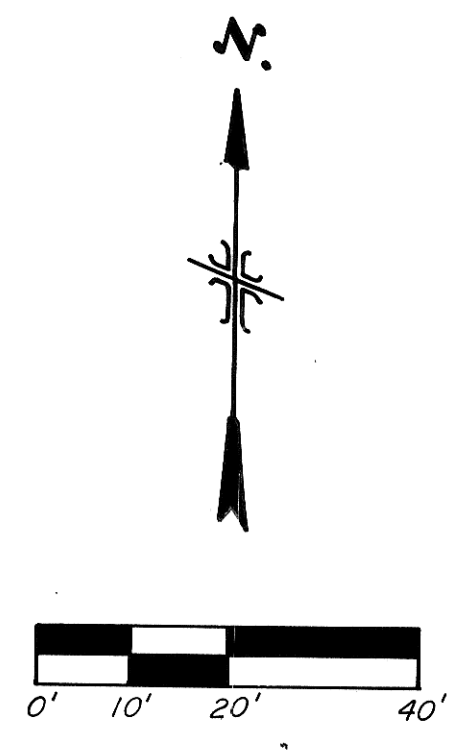


NOTE: Contractor to field verify location of all underground utilities prior to construction.

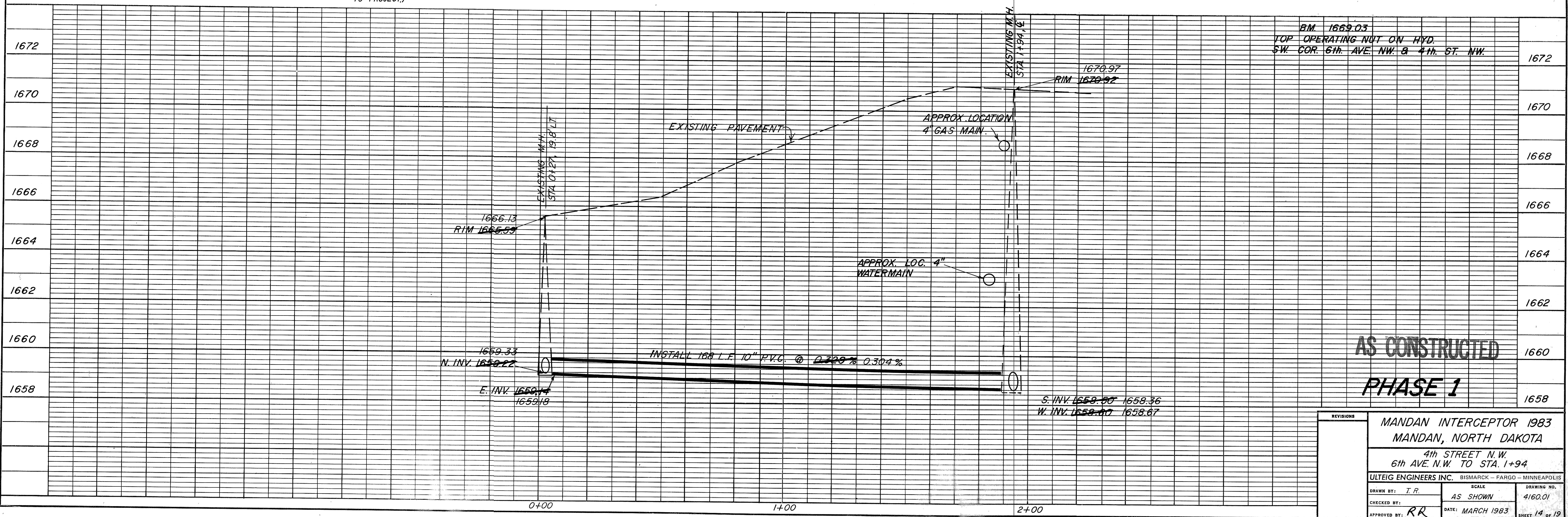
CONTRACTOR TO RECONNECT ALL EXISTING SEWER SERVICES ENCOUNTERED.



SUMMARY OF QUANTITIES		
10" P.V.C. SEWER	168 L.F.	168 LF
SEWER PIPE REMOVAL	168 L.F.	168 LF
REMOVE & REPLACE C & G	80 L.F.	60 S.F.
REMOVE & REPLACE SIDEWALK	22 S.F.	0
SODDING	60 S.F.	0
REMOVE & REPLACE 6" CONCRETE PAVEMENT	180 S.F.	129.5 S.F.
RECONNECT SEWER SERVICE	2 EA.	0
4" SEWER SERVICE PIPE	6 L.F.	0
REMOVE & REPLACE CONCRETE CURB	75 L.F.	0

EXISTING M.H. STA. 0427, 19.8' LT.
 INSTALL NEW 10" P.V.C. AT THE INVERT ELEVATION SHOWN. SEAL WITH GROUT AND RECONSTRUCT MANHOLE INVERT TO PROVIDE A SMOOTH FLOW LINE. RAISE MANHOLE FRAME WITH TWO ADJUSTING RINGS. (COSTS ASSOCIATED WITH THIS ARE INCIDENTAL TO PROJECT.)

EXISTING M.H. STA. 1+94, 0
 INSTALL NEW 10" P.V.C. AT THE INVERT ELEVATION SHOWN. SEAL WITH GROUT AND RECONSTRUCT MANHOLE INVERT TO PROVIDE A SMOOTH FLOW LINE. (COSTS ASSOCIATED WITH THIS ARE INCIDENTAL TO PROJECT.)



B.M. 1669.03
 TOP OPERATING NUT ON HYD.
 SW. COR. 6th AVE. NW & 4th ST. NW.

AS CONSTRUCTED
PHASE 1

REVISIONS		MANDAN INTERCEPTOR 1983 MANDAN, NORTH DAKOTA	
		4th STREET N.W. 6th AVE. N.W. TO STA. 1+94	
ULTEIG ENGINEERS INC. BISMARCK - FARGO - MINNEAPOLIS		SCALE	
DRAWN BY: T.R.	CHECKED BY: RR	DATE: MARCH 1983	DRAWING NO. 4160.01
APPROVED BY: RR		SHEET 14 OF 19	