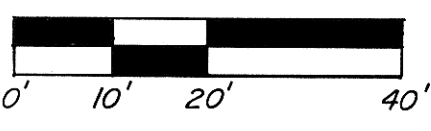
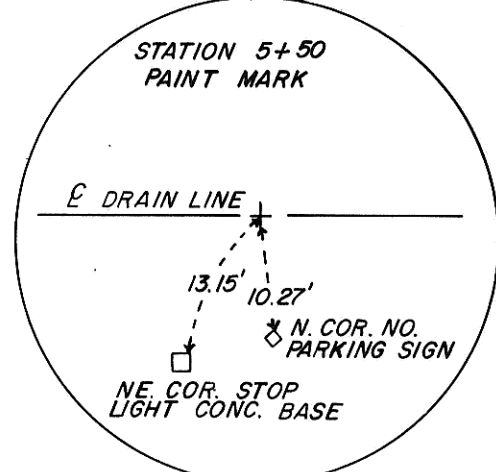
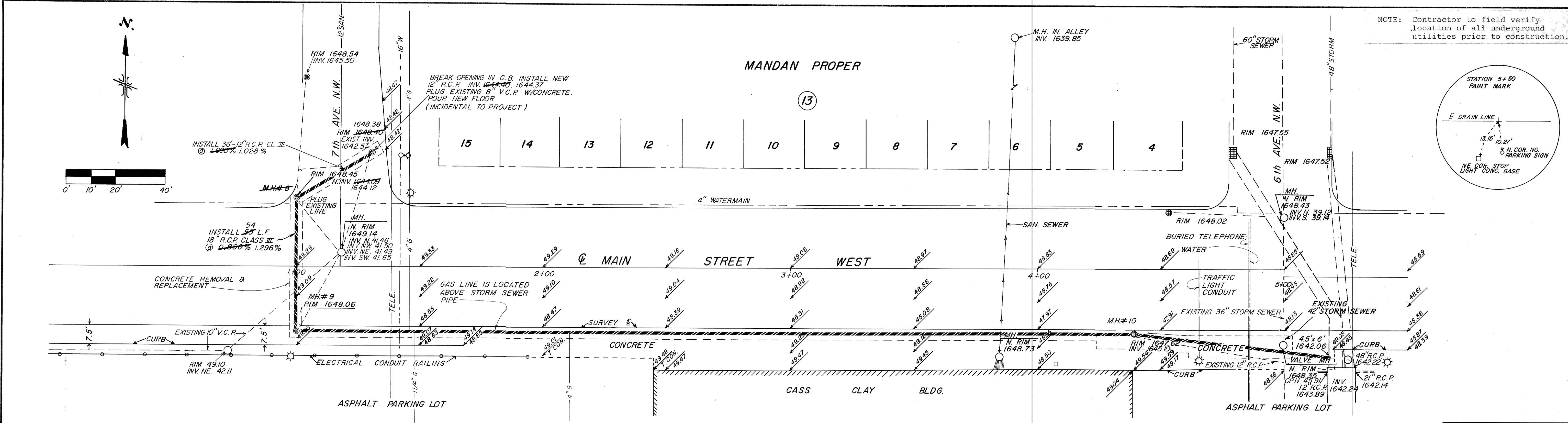


NOTE: Contractor to field verify location of all underground utilities prior to construction.



SUMMARY OF QUANTITIES	
24" R.C.P. CL. III	421 390 L.F.
18" R.C.P. CL. III	54 58 L.F.
12" R.C.P. CL. III	36 L.F.
MANHOLES TYPE A	1 Eo.
TYPE B	1 Eo.
TYPE C	1 Eo.
CONCRETE REMOVAL AND REPLACEMENT	331 SY.
GRAVEL AND SAND BACKFILL	444 380 TON

~~TYPE A STORM M.H. M.H. # 8 STA. 1+00, 52' LT. INSTALL NEW M.H. SALVAGE EXISTING C.B. & CASTING PLUG LINE TO SAN. SEWER W/CONCRETE.~~

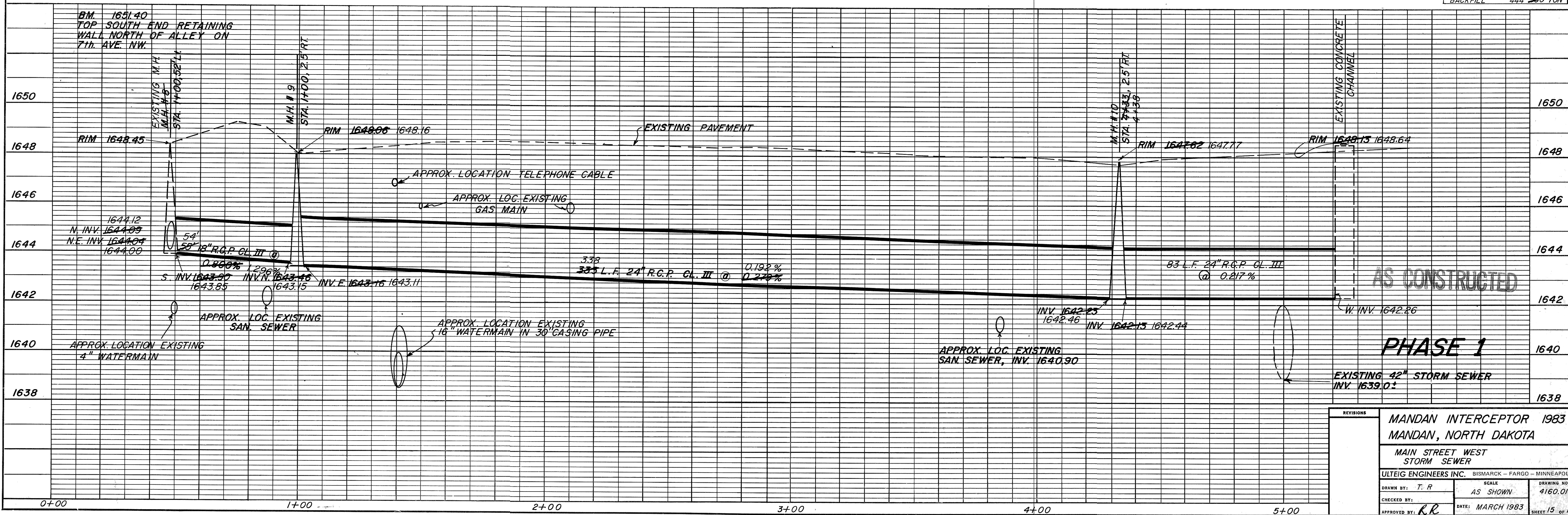
TYPE B STORM M.H. M.H. # 9 STA. 1+00, 2.5' RT. INSTALL NEW M.H. PLUG LINE TO SAN. SEWER W/CONCRETE.

STA. 1+00 E REMOVE AND SALVAGE EXISTING C.B. AND CASTING

STA. 1+00, 52' LT. UTILIZE EXISTING M.H.

TYPE A STORM M.H. M.H. # 10 STA. 4+33, 2.5' RT., STA. 4+38

INSTALL NEW M.H. SALVAGE EXISTING C.B. & CASTING ABANDON EXISTING 12" R.C.P. TO EAST. PLUG W/CONCRETE.



AS CONSTRUCTED

PHASE 1

REVISIONS	
MANDAN INTERCEPTOR 1983 MANDAN, NORTH DAKOTA	
MAIN STREET WEST STORM SEWER	
ULTEIG ENGINEERS INC. BISMARCK - FARGO - MINNEAPOLIS	
SCALE	DRAWING NO.
AS SHOWN	4160.01
CHECKED BY:	DATE: MARCH 1983
APPROVED BY: R.R.	SHEET 15 OF 19