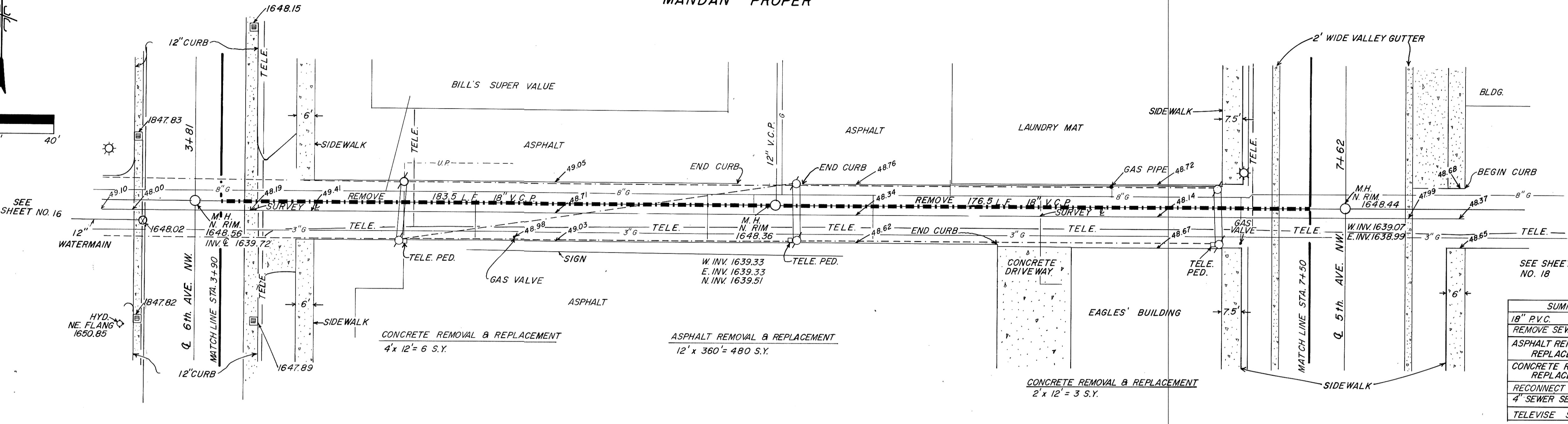
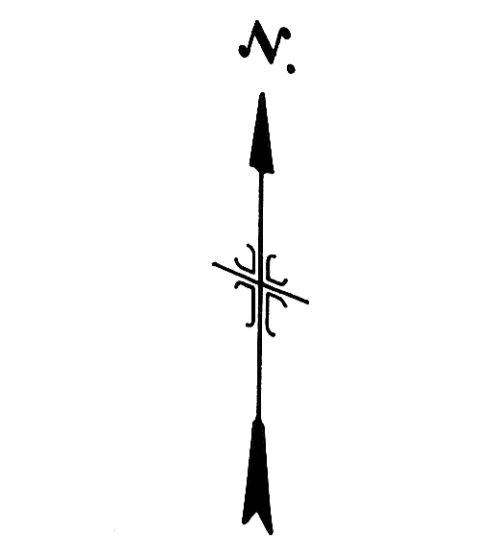


NOTE: CONTRACTOR SHALL TELEWISE THE EXISTING 18" V.C. PIPE TO DETERMINE SERVICE LINE SIZES AND LOCATIONS. THE SOUNDNESS OF THE PIPE MUST BE CHECKED TO DETERMINE STRUCTURAL CONDITION OF THE PIPE.

NOTE: Contractor to field verify location of all underground utilities prior to construction.

MANDAN PROPER



SUMMARY OF QUANTITIES	
18" P.V.C.	360 L.F.
REMOVE SEWER PIPE	360 L.F.
ASPHALT REMOVAL AND REPLACEMENT	480 S.Y.
CONCRETE REMOVAL AND REPLACEMENT	3 S.Y.
RECONNECT SEWER SERVICES	8 EA.
4" SEWER SERVICE PIPE	18 L.F.
TELEWISE SEWER	360 L.F.

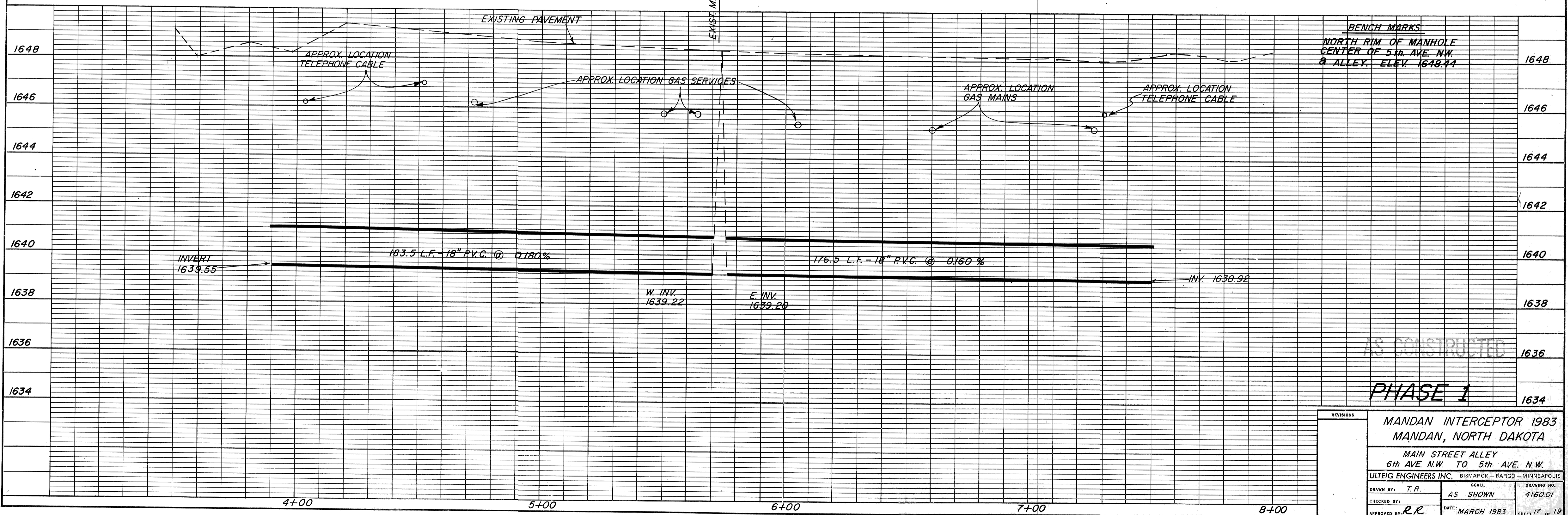
CONCRETE REMOVAL & REPLACEMENT
4 x 12' = 6 S.Y.

ASPHALT REMOVAL & REPLACEMENT
12' x 360' = 480 S.Y.

CONCRETE REMOVAL & REPLACEMENT
2' x 12' = 3 S.Y.

MANDAN PROPER

EXIST. M.H. STA. 5+73.5, 2.8' LT.
REMOVE EXISTING 18" V.C. SEWER AND INSTALL 18" P.V.C. SEWER. SEAL W/GROUT & FORM SMOOTH FLOW INVERT. (INCIDENTAL)



BENCH MARKS
NORTH RIM OF MANHOLE
CENTER OF 5th AVE. NW.
& ALLEY. ELEV. 1648.44

AS CONSTRUCTED

PHASE 1

REVISIONS			
MANDAN INTERCEPTOR 1983 MANDAN, NORTH DAKOTA			
MAIN STREET ALLEY 6th AVE. N.W. TO 5th AVE. N.W.			
ULTEIG ENGINEERS INC. BISMARCK - FARGO - MINNEAPOLIS			
DRAWN BY: T.R.	SCALE: AS SHOWN	DRAWING NO. 4160.01	
CHECKED BY:			
APPROVED BY: R.R.	DATE: MARCH 1983	SHEET 17 OF 19	