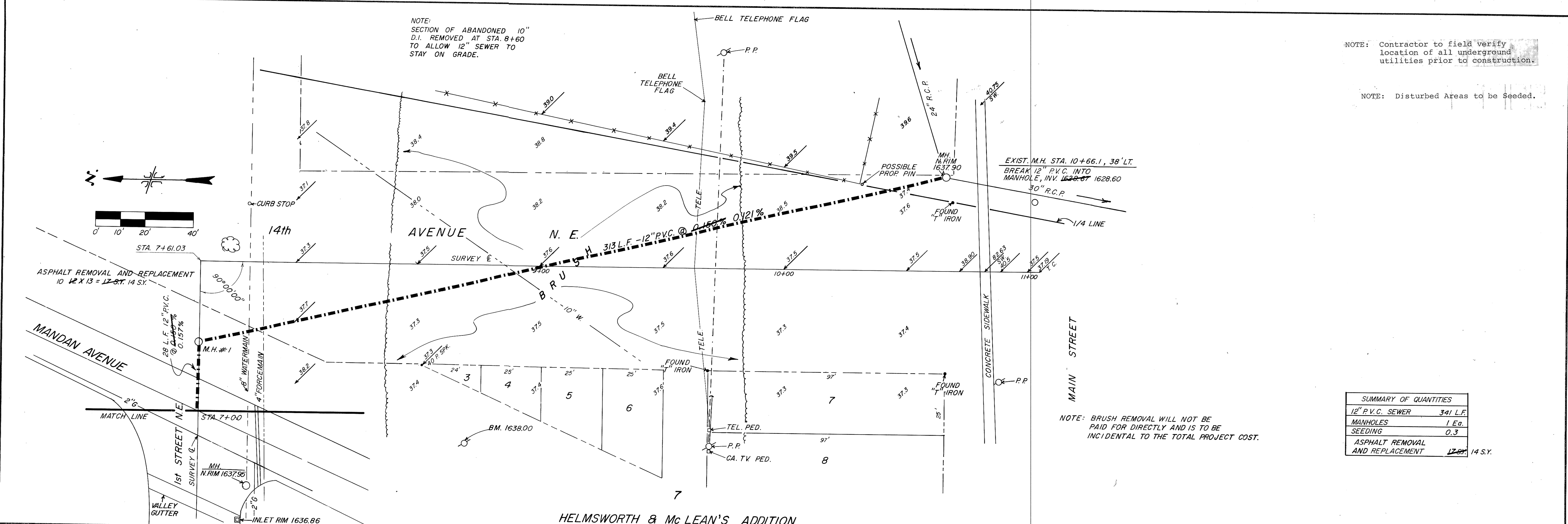


NOTE:  
SECTION OF ABANDONED 10"  
D.I. REMOVED AT STA. 8+60  
TO ALLOW 12" SEWER TO  
STAY ON GRADE.

NOTE: Contractor to field verify  
location of all underground  
utilities prior to construction.

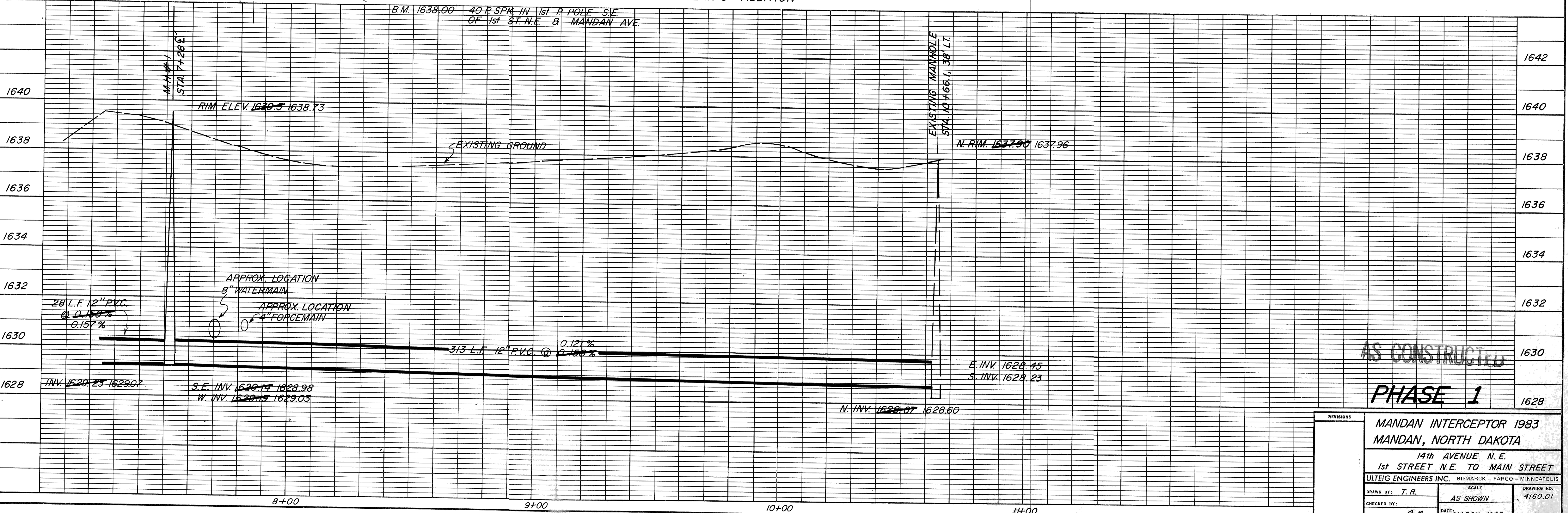
NOTE: Disturbed Areas to be Seeded.



SUMMARY OF QUANTITIES	
12" P.V.C. SEWER	341 L.F.
MANHOLES	1 Ea.
SEEDING	0.3
ASPHALT REMOVAL AND REPLACEMENT	1728' 14 S.Y.

NOTE: BRUSH REMOVAL WILL NOT BE PAID FOR DIRECTLY AND IS TO BE INCIDENTAL TO THE TOTAL PROJECT COST.

HELMSWORTH & McLEAN'S ADDITION



AS CONSTRUCTED  
**PHASE 1**

REVISIONS MANDAN INTERCEPTOR 1983 MANDAN, NORTH DAKOTA 14th AVENUE N.E. 1st STREET N.E. TO MAIN STREET ULTEIG ENGINEERS INC. BISMARCK - FARGO - MINNEAPOLIS		
DRAWN BY: T.R. CHECKED BY: APPROVED BY: R.R.	SCALE: AS SHOWN DATE: MARCH 1983	DRAWING NO.: 4160.01 SHEET 3 OF 19