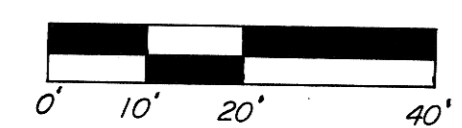


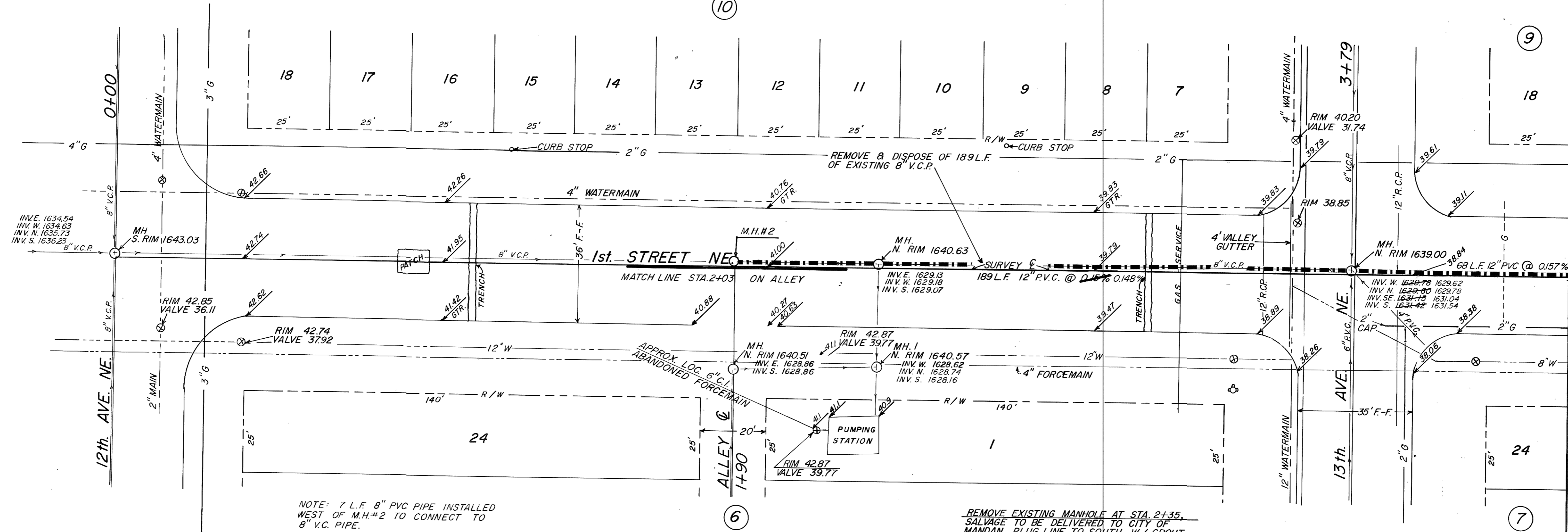
HELMSWORTH & McLEAN'S ADDITION

NOTE: Contractor to field verify location of all underground utilities prior to construction.



SUMMARY OF QUANTITIES	
12" PVC SEWER	259 L.F. 256 L.F.
ASPHALT REMOVAL	355 S.Y. 300 S.Y.
& REPLACEMENT	
VALLEY GUTTER REMOVAL	6 S.Y. 3 E.A.
& REPLACEMENT	
MANHOLES	1 E.A.
SEWER PIPE REMOVAL	19 L.F. 196 L.F.
RECONNECT SEWER SERVICE	5 E.A. 3 E.A.
4" SEWER SERVICE PIPE	20 L.F. 8 L.F.
8" PVC SEWER	7 L.F.

EXISTING MANHOLE, STA. 2+35, 31' RT. CASTING REMOVED, MANHOLE FILLED WITH SAND



EXIST. M.H., STA. 3+79  
BREAK NEW 12" PVC INTO EXISTING MANHOLE AT STATION 3+79, REMOVE CONCRETE AS NEEDED AND INSTALL NEW INVERT. (INCIDENTAL TO PROJECT)

SEWER SERVICE LOCATIONS	
3+17	SOUTH
2+81	NORTH
2+11	NORTH

REMOVE & REPLACE ASPHALT 12' x 26' = 312 S.Y.  
10' x 67' = 670 S.Y.  
10.5' x 194' = 2037 S.Y.

REMOVE & REPLACE VALLEY GUTTER 3' x 12' = 36 S.Y.

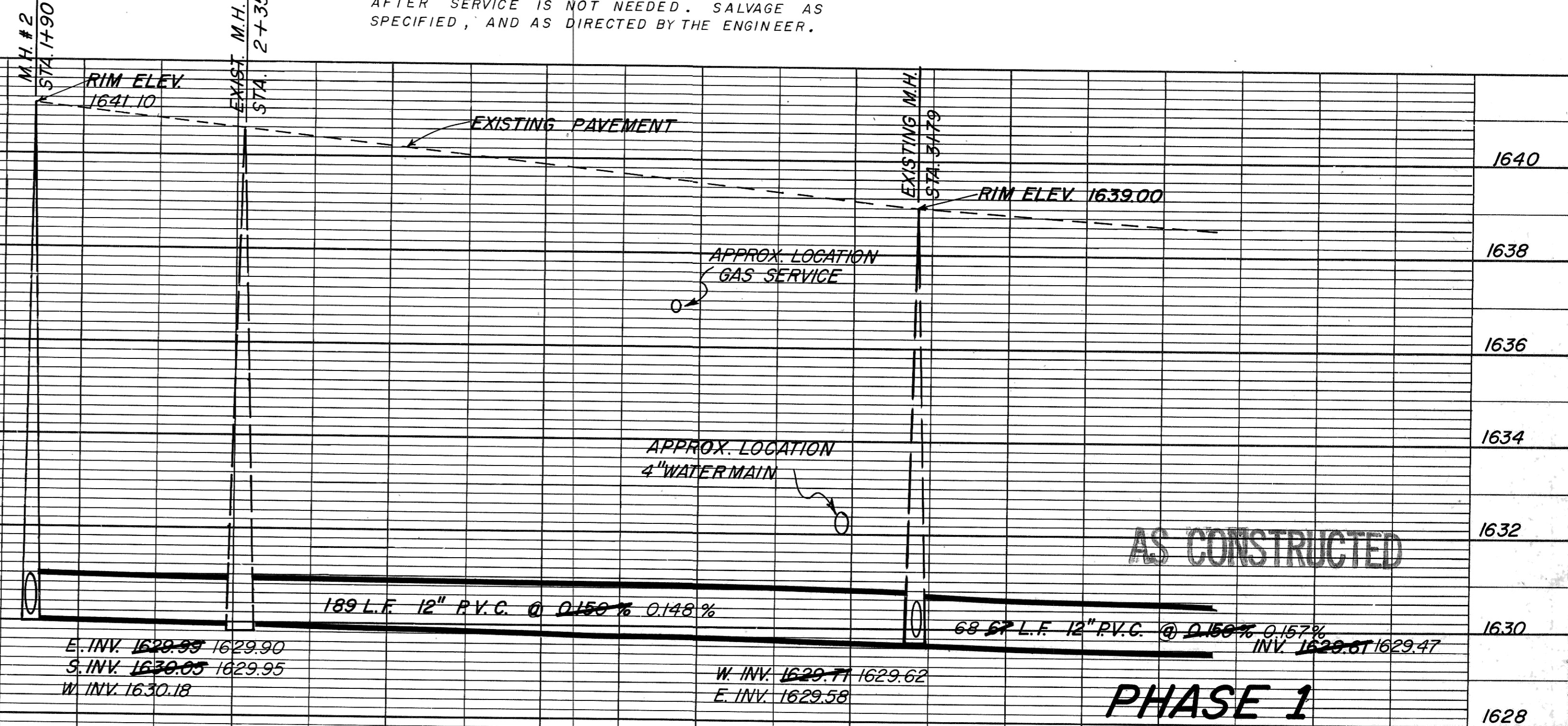
NOTE: 7 L.F. 8" PVC PIPE INSTALLED WEST OF M.H.#2 TO CONNECT TO 8" V.C.P.

REMOVE EXISTING MANHOLE AT STA. 2+35. SALVAGE TO BE DELIVERED TO CITY OF MANDAN. PLUG LINE TO SOUTH W/ GROUT (INCIDENTAL TO PROJECT)

DEMOLISH PUMPING STATION AT STA. 2+30, 45' RT. AFTER SERVICE IS NOT NEEDED. SALVAGE AS SPECIFIED, AND AS DIRECTED BY THE ENGINEER.

HELMSWORTH & McLEAN'S ADDITION

STATION	BENCH MARKS	AS CONSTRUCTED	PHASE 1
1640	NE FLANGE BOLT ON HYD. SW. COR. 1st ST. NE & 12th AVE. NE. 1644.67		
1638	TOP OF OPERATING NUT, HYD. SW. COR. 1st ST. NE & 13th AVE. NE. 1641.97		
1636			
1634			
1632			
1630			
1628			
1626			



REV.	DATE	DESCRIPTION	BY

MANDAN INTERCEPTOR 1983  
MANDAN, NORTH DAKOTA

1st STREET N.E. TO STA. 4+46

ULTEIG ENGINEERS, INC. FARGO-BISMARCK-MINNEAPOLIS

SCALE: AS SHOWN PROJECT NO. 4160.01

DRAWN BY: T.P. CHECKED BY: DATE: MARCH 1983 SHEET 5 of 19