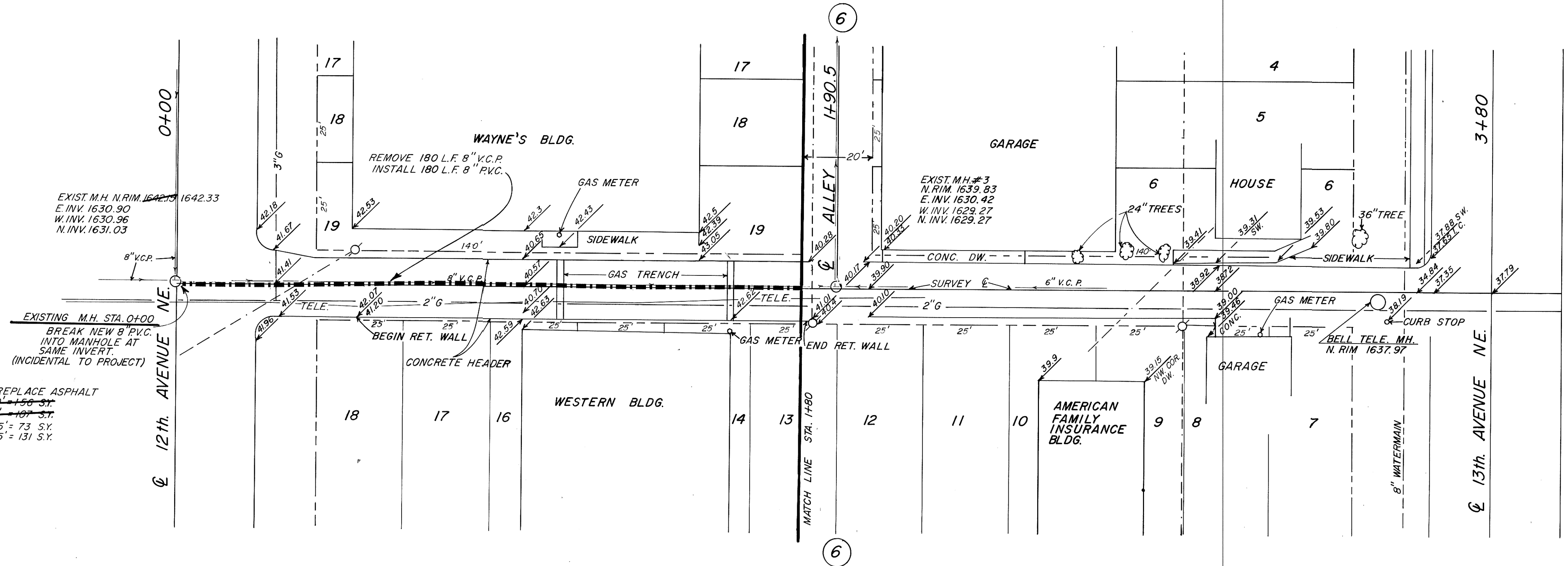
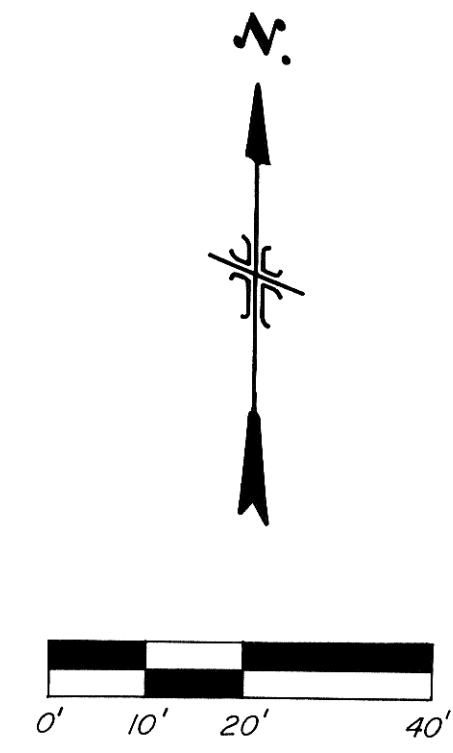


HELMSWORTH & McLEAN'S ADDITION

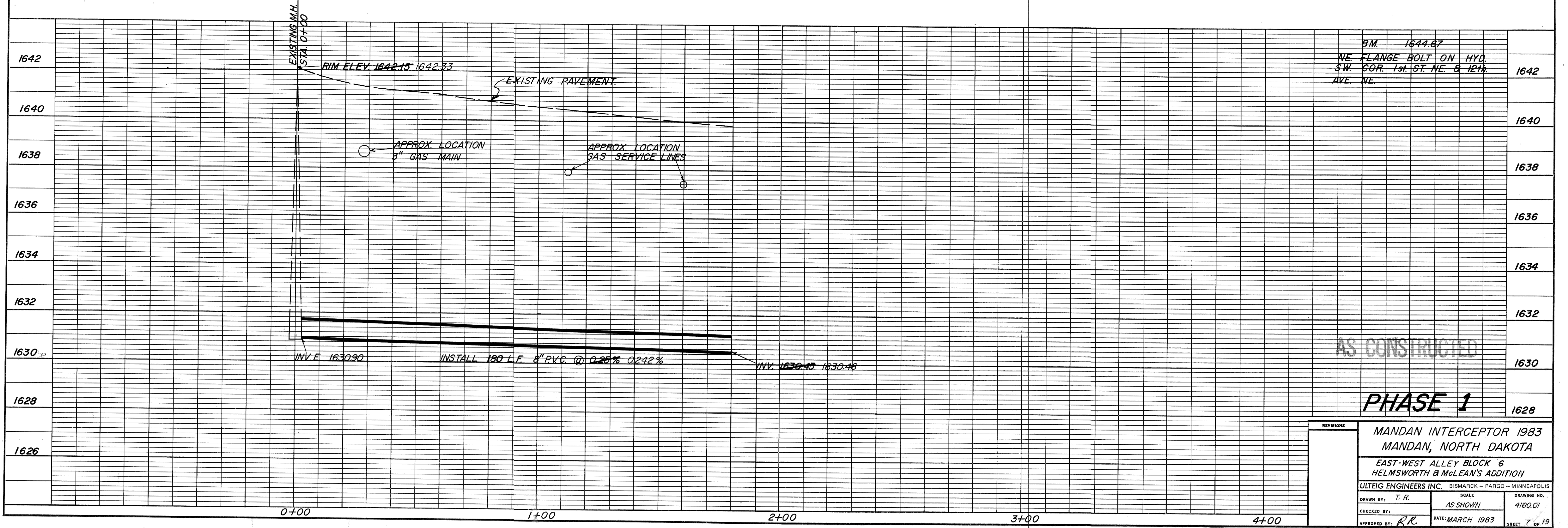
NOTE: Contractor to field verify location of all underground utilities prior to construction.

SUMMARY OF QUANTITIES	
8" PVC SEWER	180 L.F.
ASPHALT REMOVAL & REPLACEMENT	205 S.Y.
RECONNECT SEWER SERVICES	2 Ea. 5
REMOVE EXISTING SANITARY	180 L.F.
4" SEWER SERVICE PIPE	8 L.F. 21.5

SEWER SERVICE	LOCATIONS
0+59	SOUTH
0+71.5	NORTH
0+82	NORTH
1+07	SOUTH
1+36	SOUTH



HELMSWORTH & McLEAN'S ADDITION



AS CONSTRUCTED

PHASE 1

REVISIONS		MANDAN INTERCEPTOR 1983 MANDAN, NORTH DAKOTA	
		EAST-WEST ALLEY BLOCK 6 HELMSWORTH & McLEAN'S ADDITION	
ULTEIG ENGINEERS INC. BISMARCK - FARGO - MINNEAPOLIS			
DRAWN BY: T. R.	SCALE: AS SHOWN	DRAWING NO.: 4160.01	
CHECKED BY:	DATE: MARCH 1983	SHEET 7 OF 19	
APPROVED BY: RR			