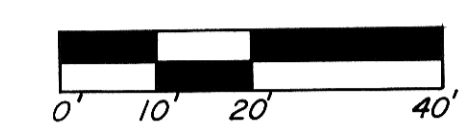
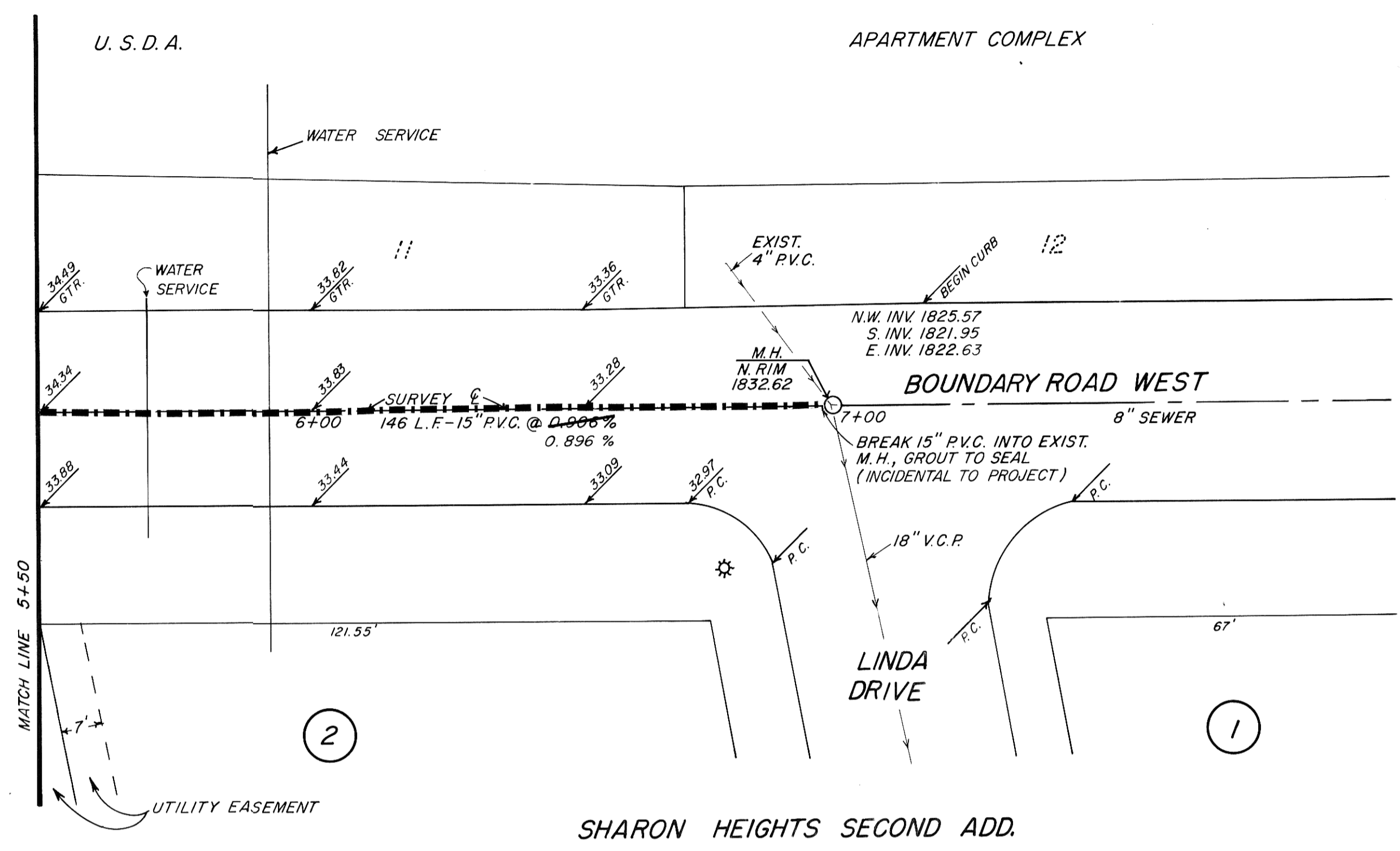
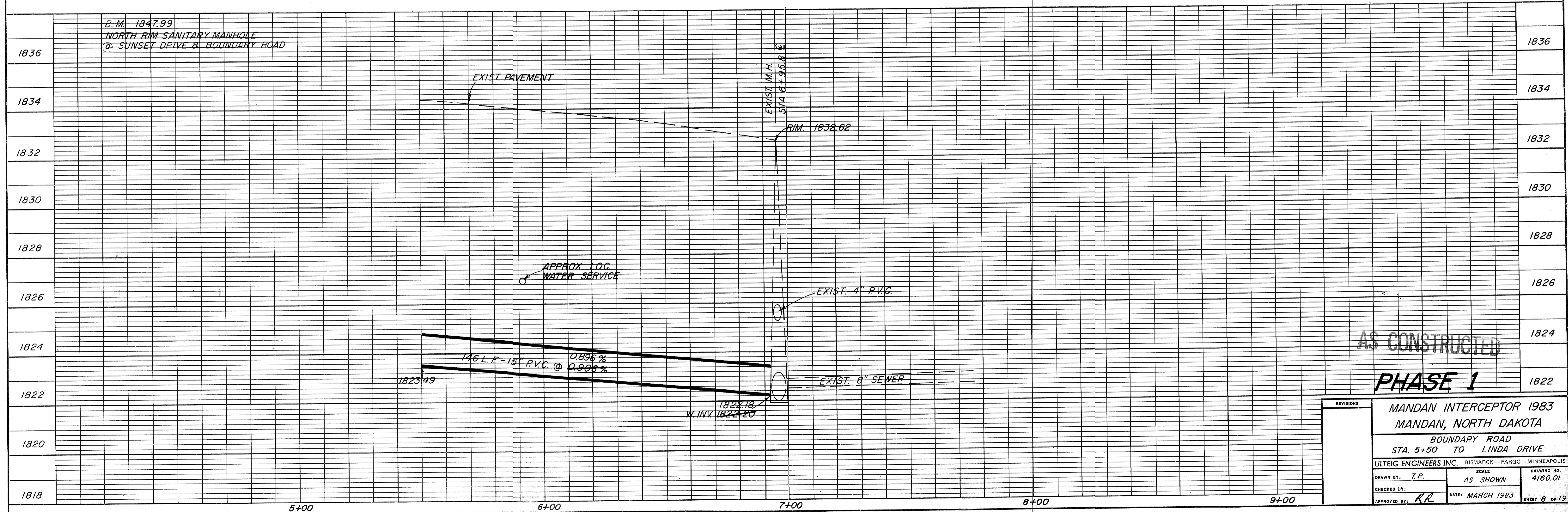


NOTE: Contractor to field verify location of all underground utilities prior to construction.



NOTE: REMOVE & REPLACE ASPHALT, 18' x 146' = 243 S.Y., 10.5' 170

SUMMARY OF QUANTITIES	
15" PVC SEWER	146 L.F.
ASPHALT REMOVAL & REPLACEMENT	243 S.Y.



AS CONSTRUCTED
PHASE 1

REVISIONS		
MANDAN INTERCEPTOR 1983		
MANDAN, NORTH DAKOTA		
BOUNDARY ROAD STA. 5+50 TO LINDA DRIVE		
ULTEIG ENGINEERS INC. BISMARCK - FARGO - MINNEAPOLIS		
DRAWN BY: T.R.	SCALE: AS SHOWN	DRAWING NO. 4160.01
CHECKED BY:	DATE: MARCH 1983	SHEET 8 OF 19
APPROVED BY: RR		