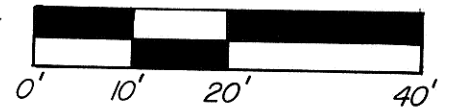


NOTE: Contractor to field verify location of all underground utilities prior to construction.

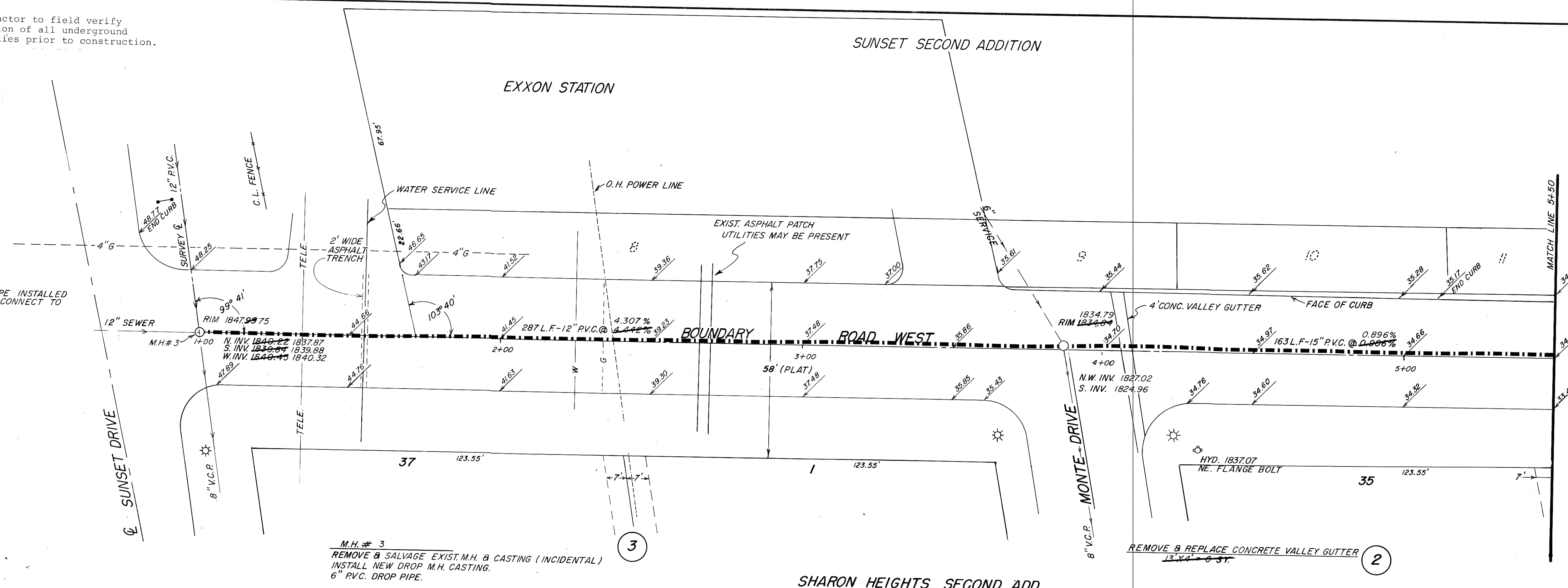
SUNSET SECOND ADDITION

EXXON STATION



NOTE: REMOVE & REPLACE EXIST. ASPHALT 10.5' X 163' = 272 S.Y. 190 S.Y. 10.5' X 287' = 303 S.Y. 335 S.Y.

NOTE: 3 L.F. 8" P.V.C. PIPE INSTALLED SOUTH OF M.H.#3 TO CONNECT TO 8" V.C. PIPE.



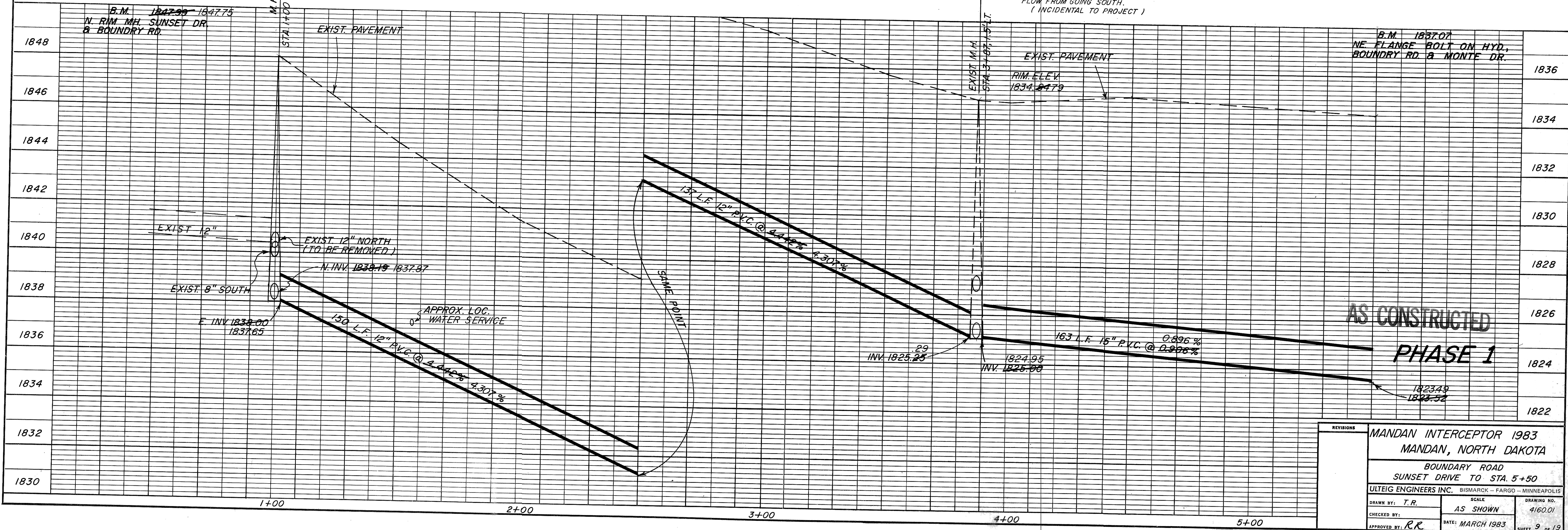
M.H.#3
REMOVE & SALVAGE EXIST. M.H. & CASTING (INCIDENTAL)
INSTALL NEW DROP M.H. CASTING.
6" P.V.C. DROP PIPE.

REMOVE & REPLACE CONCRETE VALLEY GUTTER
13' X 1'-6" ST.

EXIST. M.H. STA. 3+87, 1.5' LT.
BREAK NEW 15" P.V.C. INTO E. SIDE
AND 12" P.V.C. INTO W. SIDE. SEAL
W/GROUT. FORM SHELF TO PREVENT
FLOW FROM GOING SOUTH.
(INCIDENTAL TO PROJECT)

SUMMARY OF QUANTITIES	
12" PVC SEWER	287 L.F.
15" PVC SEWER	163 L.F.
ASPHALT REMOVAL AND REPLACEMENT	689 S.Y.
REMOVE AND REPLACE 6" CONCRETE VALLEY GUTTER	6 S.Y.
DROP MANHOLE	1 Ea.
8" PVC SEWER	3 L.F.
REMOVE SEWER PIPE	3 L.F.

SHARON HEIGHTS SECOND ADD.



AS CONSTRUCTED
PHASE 1

REVISIONS		MANDAN INTERCEPTOR 1983 MANDAN, NORTH DAKOTA	
		BOUNDARY ROAD SUNSET DRIVE TO STA. 5+50	
ULTEIG ENGINEERS INC. BISMARCK - FARGO - MINNEAPOLIS		SCALE	DRAWING NO.
DRAWN BY: T.R.	AS SHOWN	4160.01	
CHECKED BY:	DATE: MARCH 1983		
APPROVED BY: R.R.			SHEET 9 OF 19