

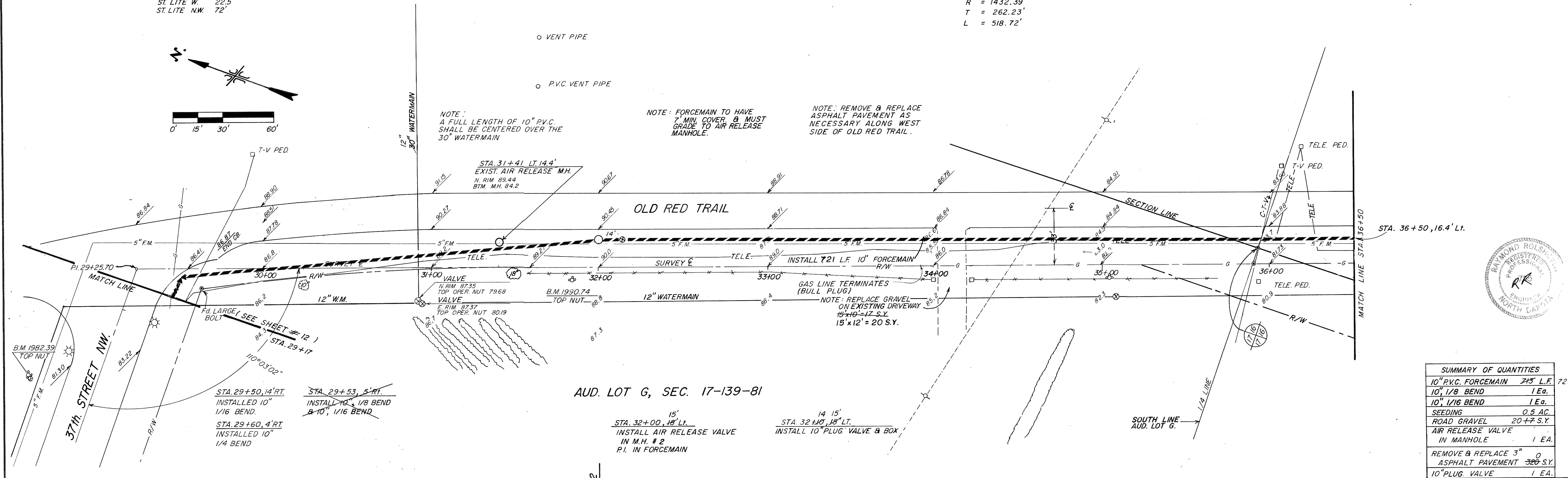
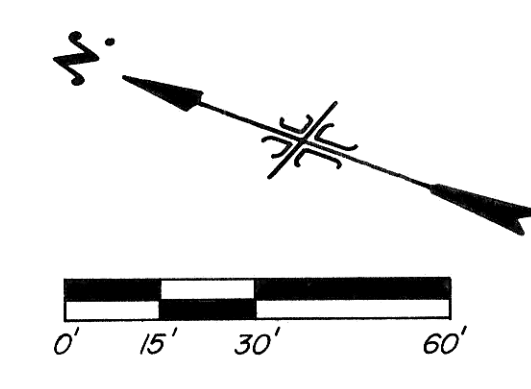
NOTE: Contractor to field verify location of all underground utilities prior to construction.

TIES FOR 1/16 BEND  
ST. LITE W. 33.5'  
ST. LITE NW. 83'

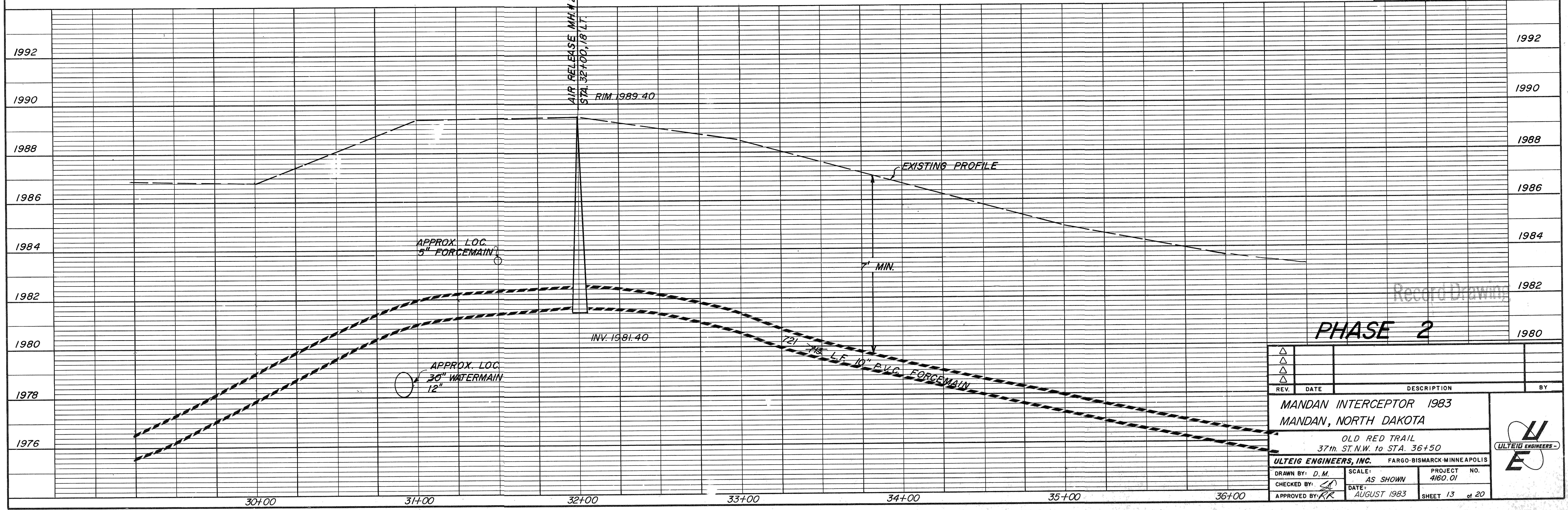
TIES FOR 1/8 BEND  
ST. LITE W. 22.5'  
ST. LITE NW. 72'

CURVE DATA @ OLD RED TRAIL

$\Delta = 20^{\circ}44'55''$   
 $D = 4^{\circ}00'00''$   
 $R = 1432.39'$   
 $T = 262.23'$   
 $L = 518.72'$



SUMMARY OF QUANTITIES	
10" P.V.C. FORCEMAIN	721 L.F.
10" 1/8 BEND	1 Ea.
10" 1/16 BEND	1 Ea.
SEEDING	0.5 AC.
ROAD GRAVEL	20 ± 7 S.Y.
AIR RELEASE VALVE IN MANHOLE	1 Ea.
REMOVE & REPLACE 3" ASPHALT PAVEMENT	320 S.Y.
10" PLUG VALVE	1 Ea.



PHASE 2

REV.	DATE	DESCRIPTION	BY

MANDAN INTERCEPTOR 1983  
MANDAN, NORTH DAKOTA

OLD RED TRAIL  
37th ST. N.W. to STA. 36+50

ULTEIG ENGINEERS, INC. FARGO-BISMARCK-MINNEAPOLIS

DRAWN BY: D.M. SCALE: AS SHOWN PROJECT NO. 4160.01  
CHECKED BY: [Signature] DATE: AUGUST 1983 SHEET 13 of 20  
APPROVED BY: [Signature]