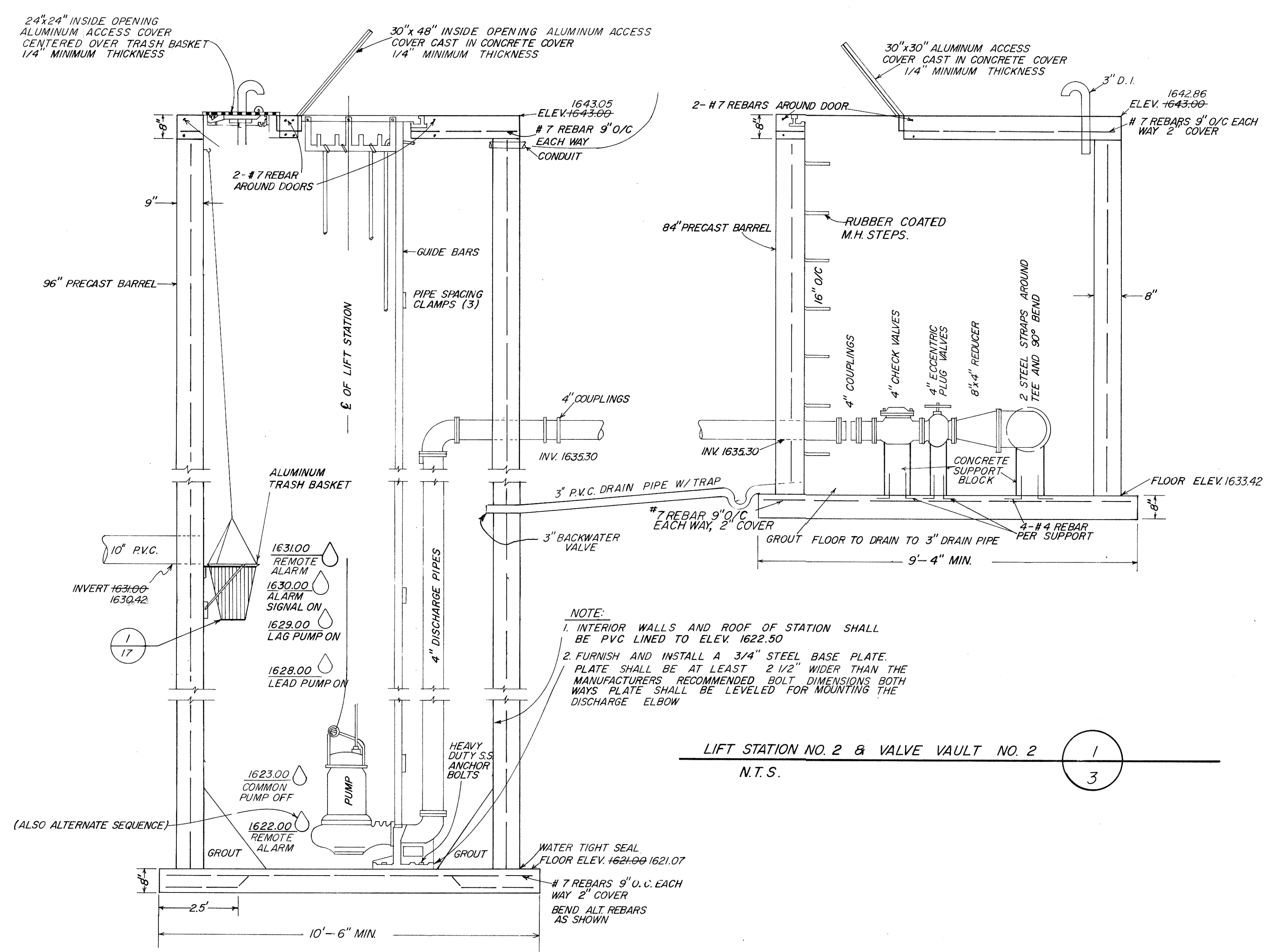


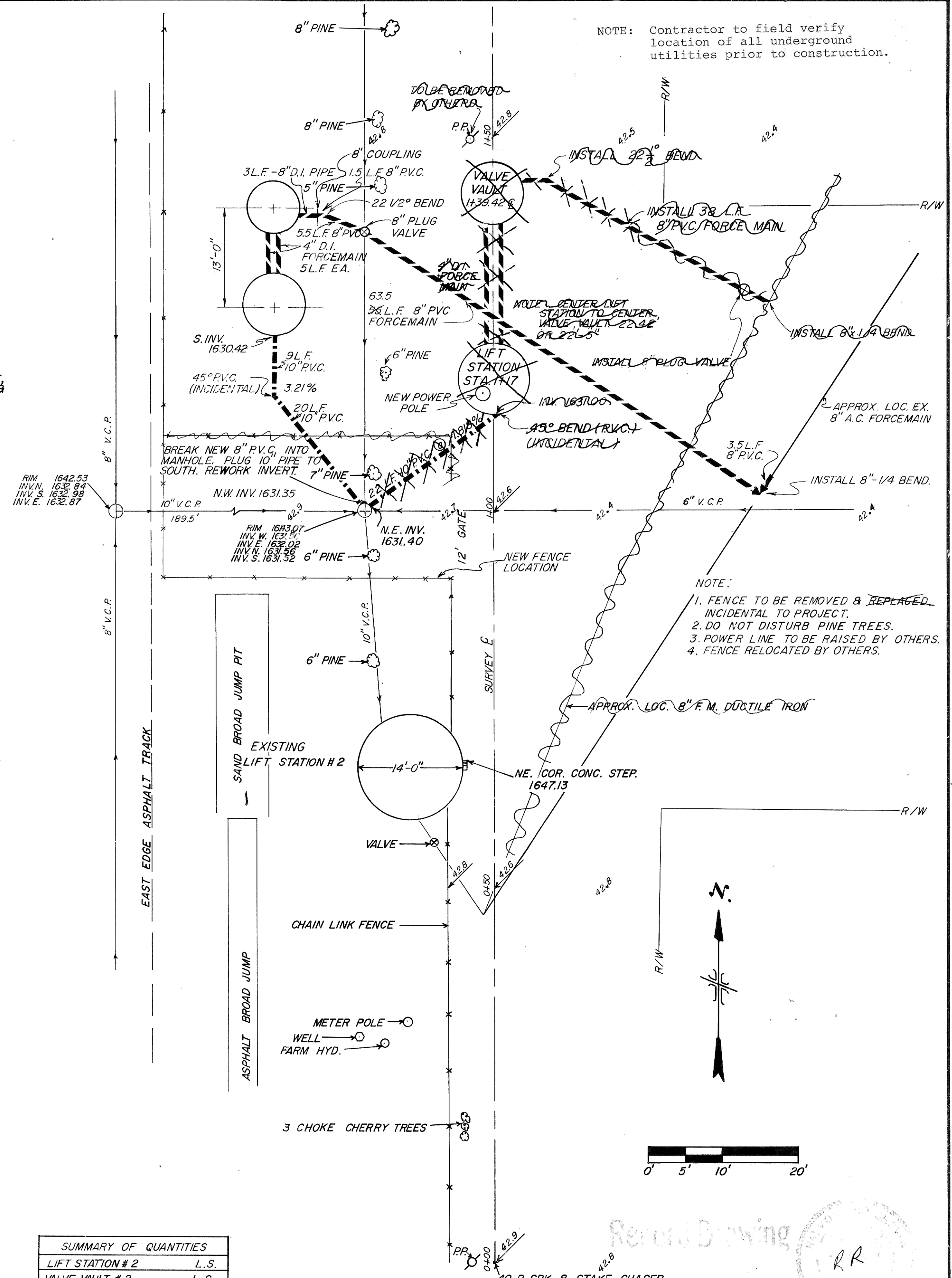
NOTE: STEEL STRAPS TO BE 1" WIDE BY 1/8" THICK.

NOTE: SUPPORT BLOCKS UNDER TEE, 90° BEND, CHECK VALVES, & ECCENTRIC PLUG VALVES. MINIMUM 7' x 7'



NOTE:
 1. INTERIOR WALLS AND ROOF OF STATION SHALL BE PVC LINED TO ELEV. 1622.50
 2. FURNISH AND INSTALL A 3/4" STEEL BASE PLATE. PLATE SHALL BE AT LEAST 2 1/2" WIDER THAN THE MANUFACTURERS RECOMMENDED BOLT DIMENSIONS BOTH WAYS PLATE SHALL BE LEVELED FOR MOUNTING THE DISCHARGE ELBOW

LIFT STATION NO. 2 & VALVE VAULT NO. 2
 N.T.S.



NOTE: Contractor to field verify location of all underground utilities prior to construction.

NOTE:
 1. FENCE TO BE REMOVED & REPLACED INCIDENTAL TO PROJECT.
 2. DO NOT DISTURB PINE TREES.
 3. POWER LINE TO BE RAISED BY OTHERS.
 4. FENCE RELOCATED BY OTHERS.

SUMMARY OF QUANTITIES	
LIFT STATION # 2	L.S.
VALVE VAULT # 2	L.S.
DEMOLISH EXISTING LIFT	L.S.
10" P.V.C. SEWER	29 22 L.F.
8" P.V.C. FORCEMAIN	74 38 L.F.
4" D.I. PIPE	10 30 L.F.
8" PLUG VALVE	1 Ea.
8" 1/4" BEND	1 Ea.
8" 22 1/2° BEND	1 Ea.
SEEDING	0.3 22 AC.
8" D.I. PIPE	3 L.F.

PHASE 2

REV.	DATE	DESCRIPTION	BY

MANDAN INTERCEPTOR 1983
 MANDAN, NORTH DAKOTA

LIFT STATION # 2

ULTEIG ENGINEERS, INC. CONSULTING ENGINEERS • ARCHITECT
 FARGO • BISMARCK • MINNEAPOLIS

DRAWN BY: T.R. SCALE: AS SHOWN PROJECT NO. 416201
 CHECKED BY: [Signature] DATE: AUGUST 1983 SHEET 3 of 20
 APPROVED BY: [Signature]