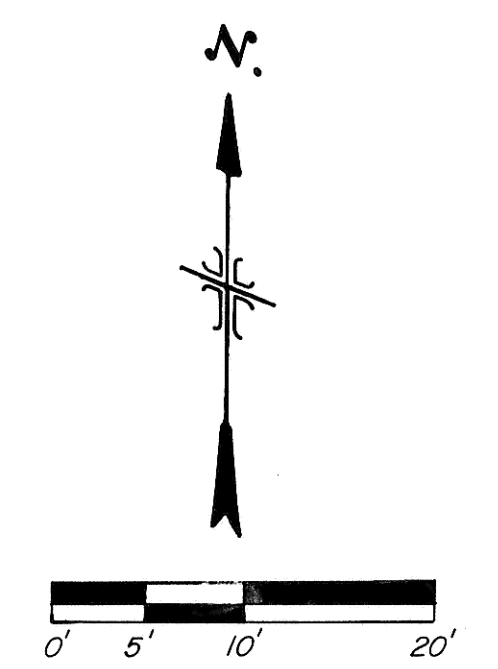
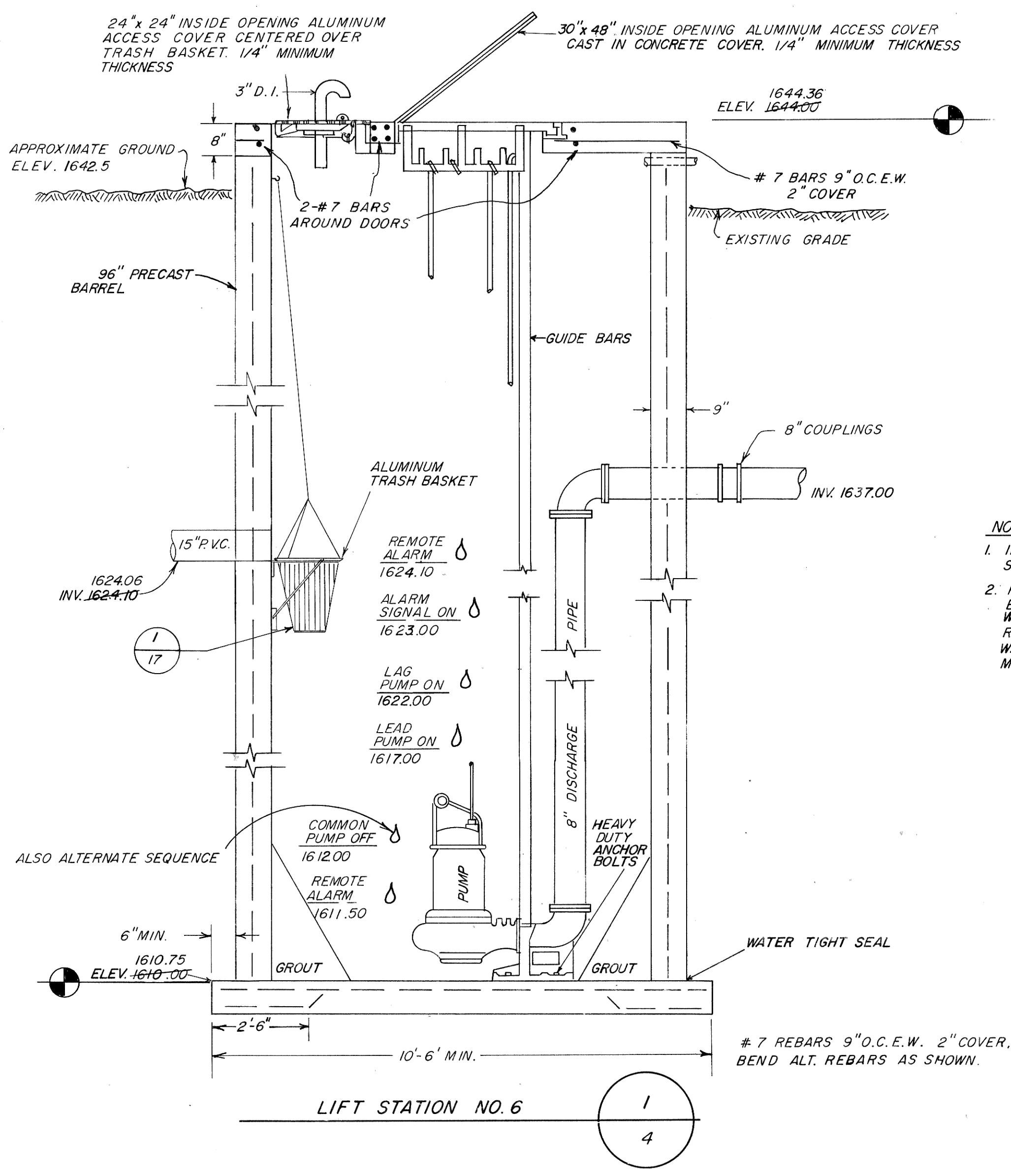


SUMMARY OF QUANTITIES	
LIFT STATION #6	L.S.
15" P.V.C. SEWER	93' L.F.
DEMOLISH EXISTING LIFT	L.S.
MANHOLE	1 EA.
8" 1/4 BEND	2 EA.
8" 1/8 BEND	2 EA.
GRAVEL BACKFILL	318 TON
8" D.I. FORCEMAIN	78' L.F.
ASPHALT REMOVAL	8' REPLACEMENT
CURB & GUTTER	59 S.Y.
REMOVAL & REPLACEMENT	25' L.F.
8" COUPLINGS	2 EA.

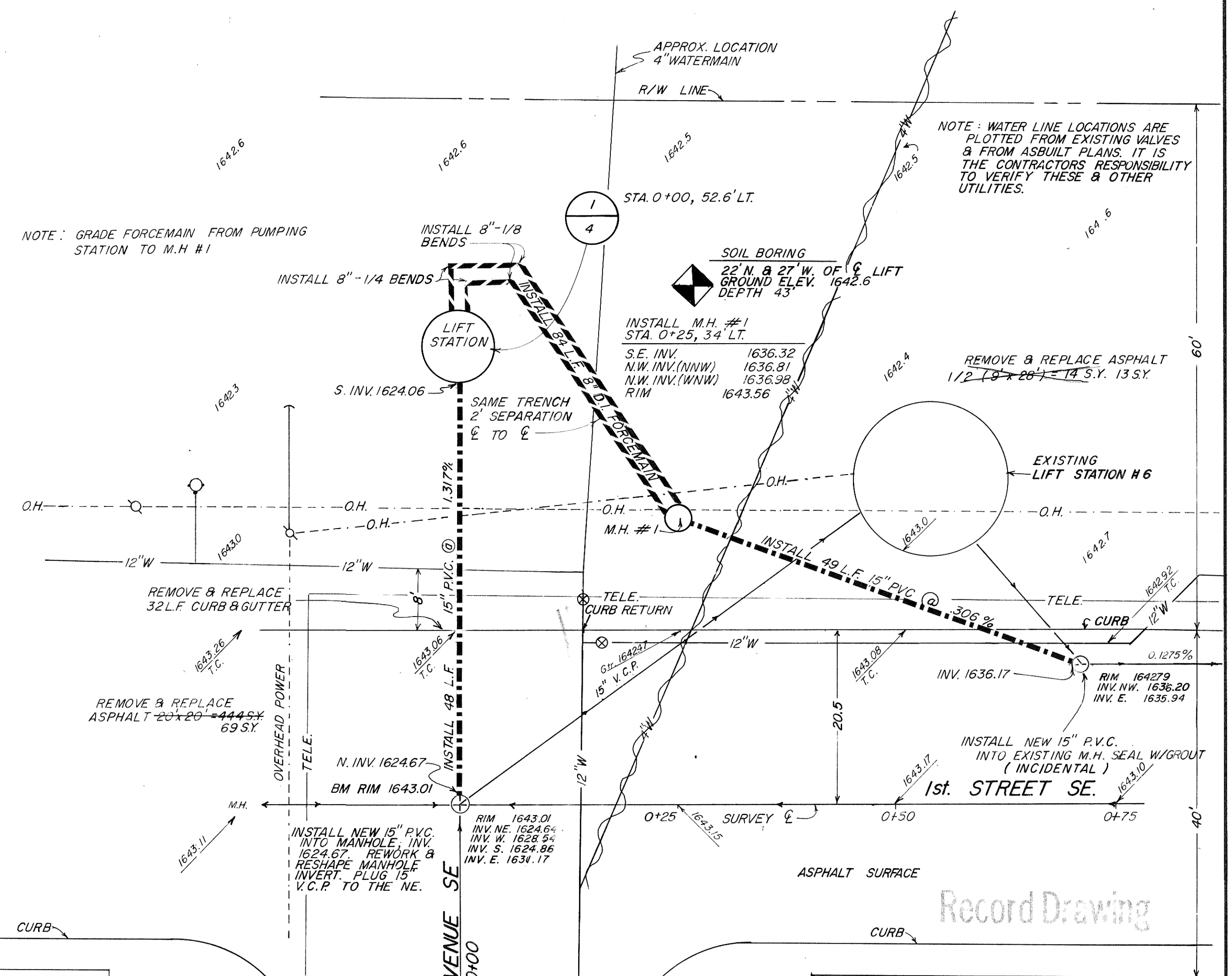


NOTE: Contractor to field verify location of all underground utilities prior to construction.

BURLINGTON NORTHERN RAILROAD PROPERTY



NOTE
 1. INTERIOR WALL AND ROOF OF STATION SHALL BE PVC LINED DOWN TO ELEV. 1611.50
 2. FURNISH AND INSTALL A 3/4" STEEL BASE PLATE. PLATE SHALL BE 2 1/2" WIDER THAN THE MANUFACTURER'S RECOMMENDED BOLT DIMENSIONS - BOTH WAYS. PLATE SHALL BE LEVELED FOR MOUNTING THE DISCHARGE ELBOW.



PHASE 2

REV	DATE	DESCRIPTION	BY

MANDAN INTERCEPTOR 1983
MANDAN, NORTH DAKOTA

LIFT STATION # 6

ULTEIG ENGINEERS, INC. CONSULTING ENGINEERS • ARCHITECT
 FARGO • BISMARCK • MINNEAPOLIS

DRAWN BY: T.R.	SCALE: AS SHOWN	PROJECT NO. 4160.01
CHECKED BY: SD	DATE: AUGUST 1983	SHEET 4 of 20
APPROVED BY: RR		

15122