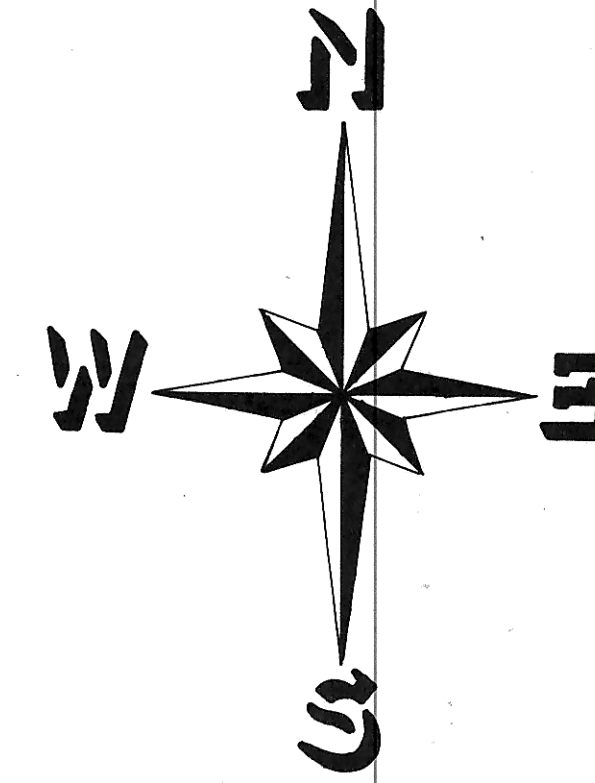
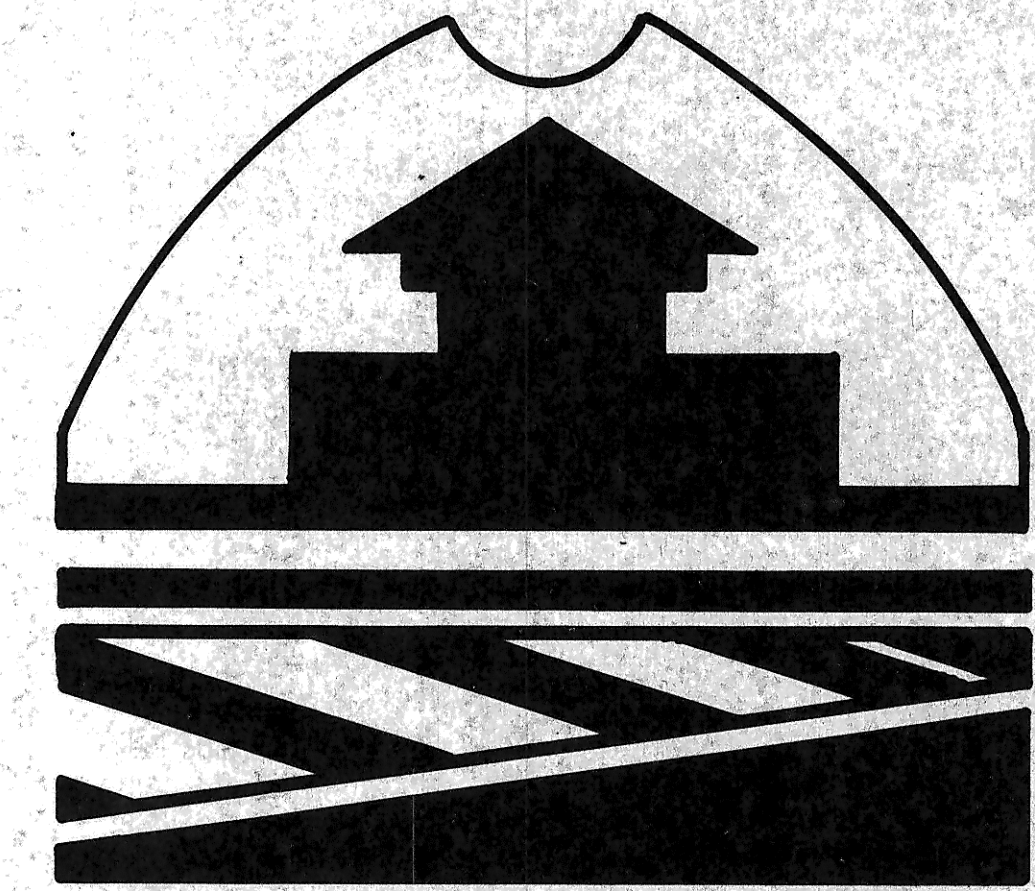


CITY OF MANDAN



AREA MAP

EXISTING	LEGEND	PROPOSED
--- S S ---	STORM SEWER	--- S S ---
--- S ---	SAN SEWER	--- S ---
--- W ---	WATER MAIN	--- W ---
○	HYDRANT	●
○	VALVE	●

ENGINEER'S CERTIFICATE

I, THOMAS R. LITTLE, A REGISTERED PROFESSIONAL ENGINEER, HEREBY CERTIFY THAT THE ATTACHED PLANS WERE PREPARED UNDER MY SUPERVISION AND ARE COMPLETE AND CORRECT TO THE BEST OF MY KNOWLEDGE AND BELIEF.

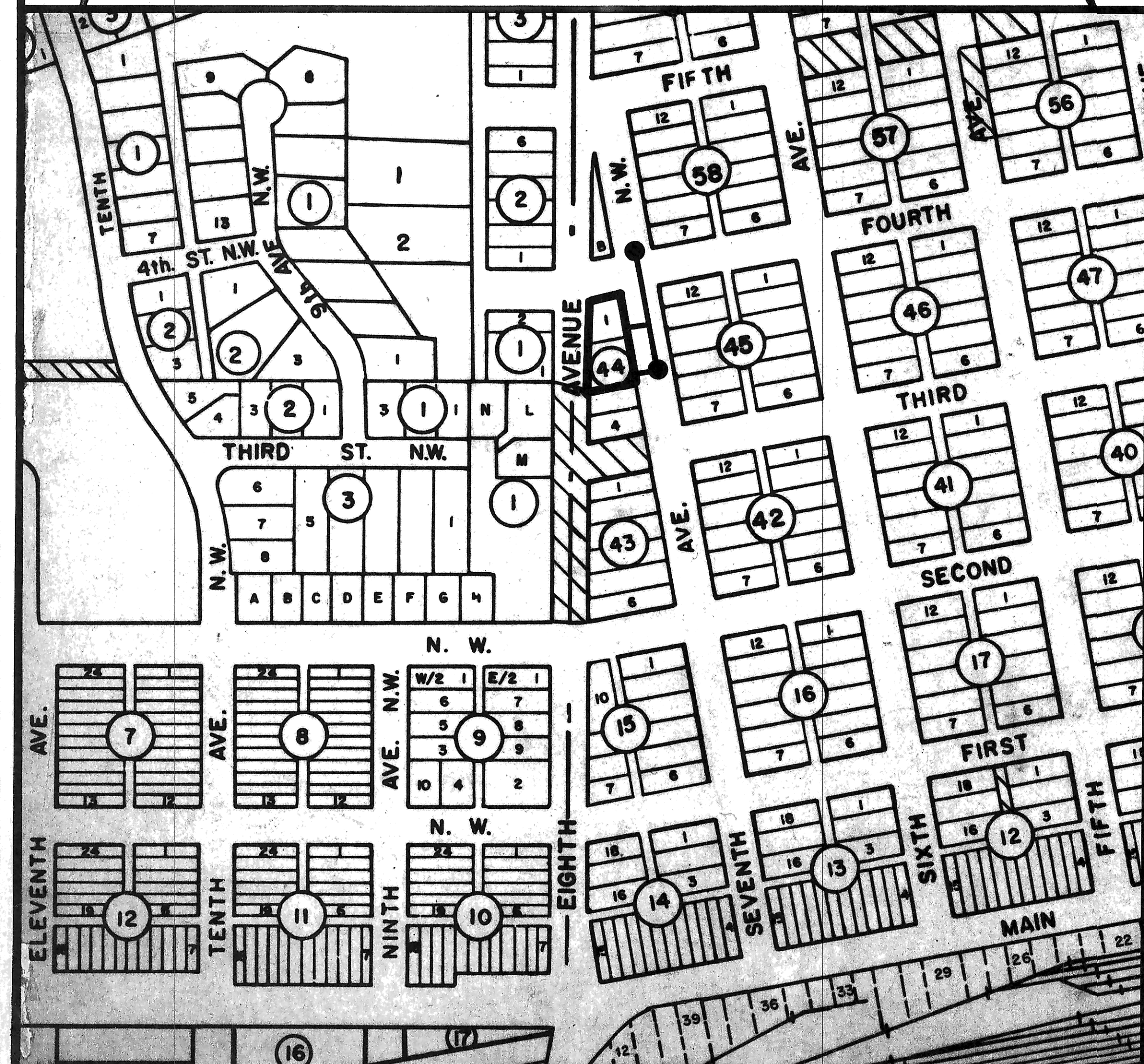
Thomas R. Little
 THOMAS R. LITTLE, P.E.
 CITY ENGINEER - MANDAN, N.D.

INDEX	
SHEET 1 OF 2	COVER SHEET
SHEET 2 OF 2	7th AVENUE N.W. BETWEEN 3rd and 4th STREET N.W.

SEWER IMPROVEMENT DISTRICT 18 PROJECT No. 84-2

8

AS BUILT



D 18
P 84-2