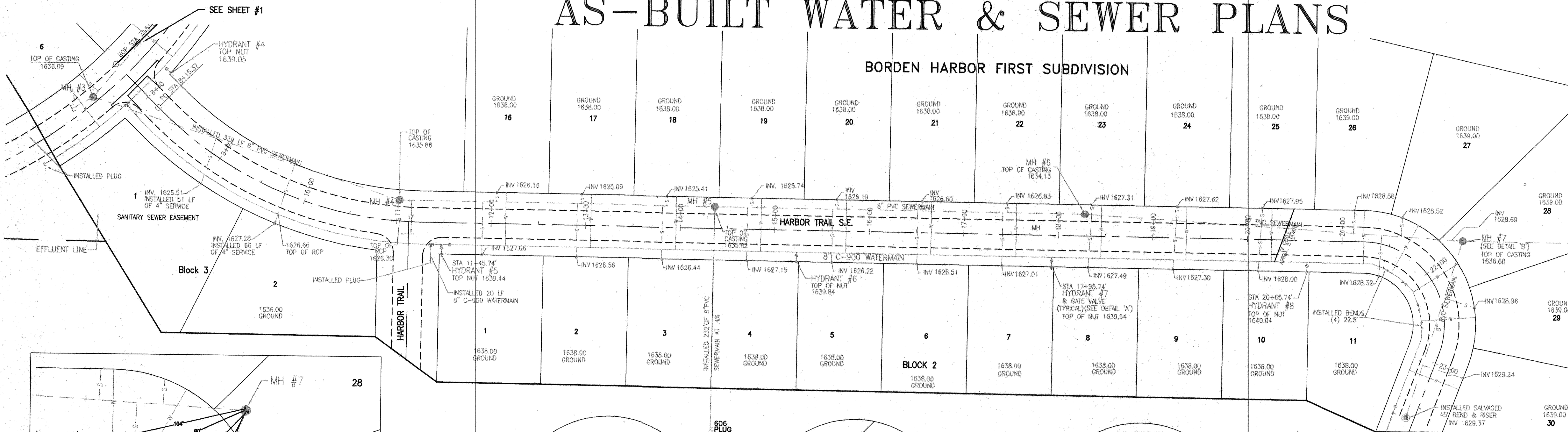
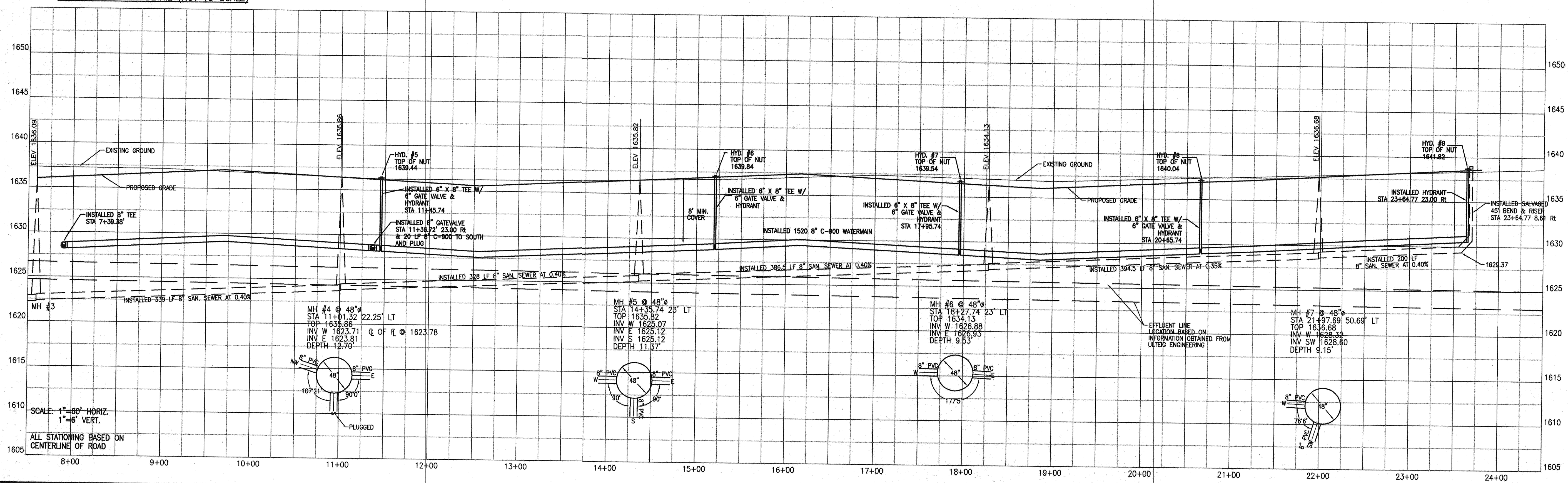
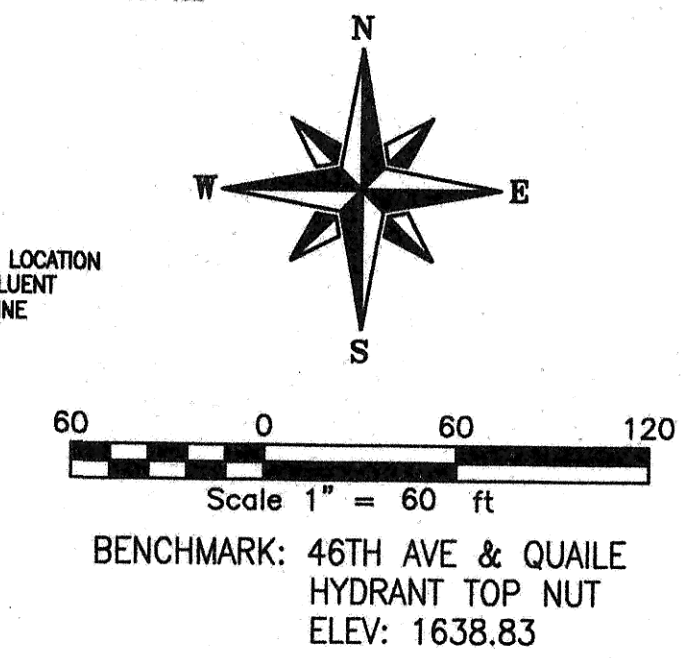
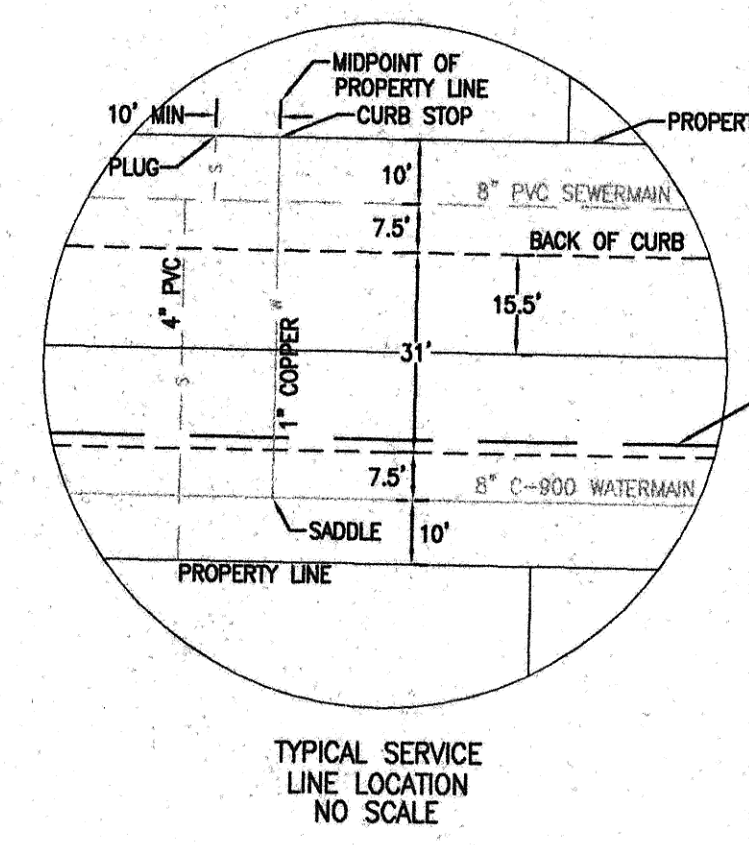
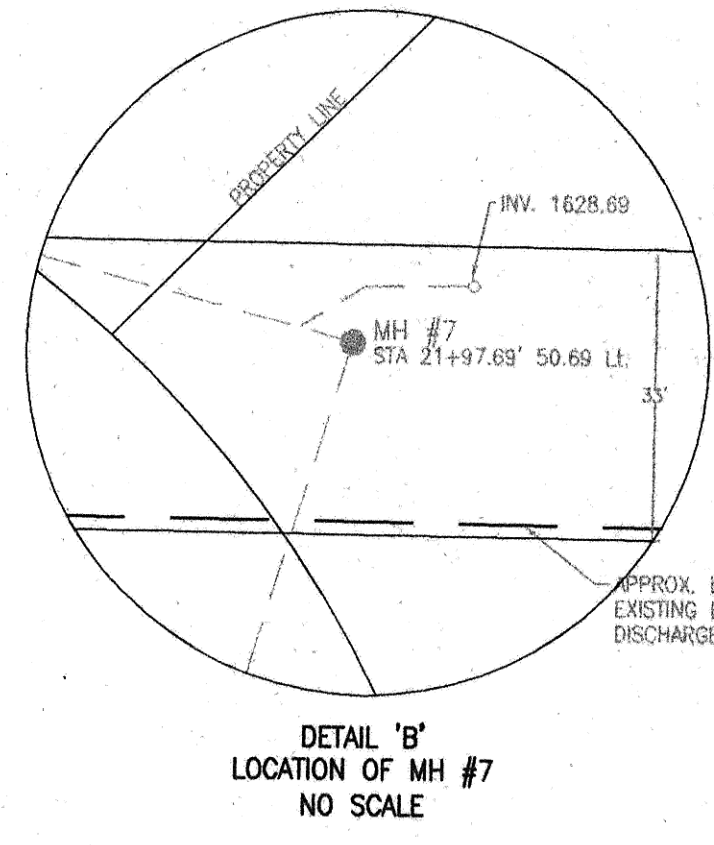
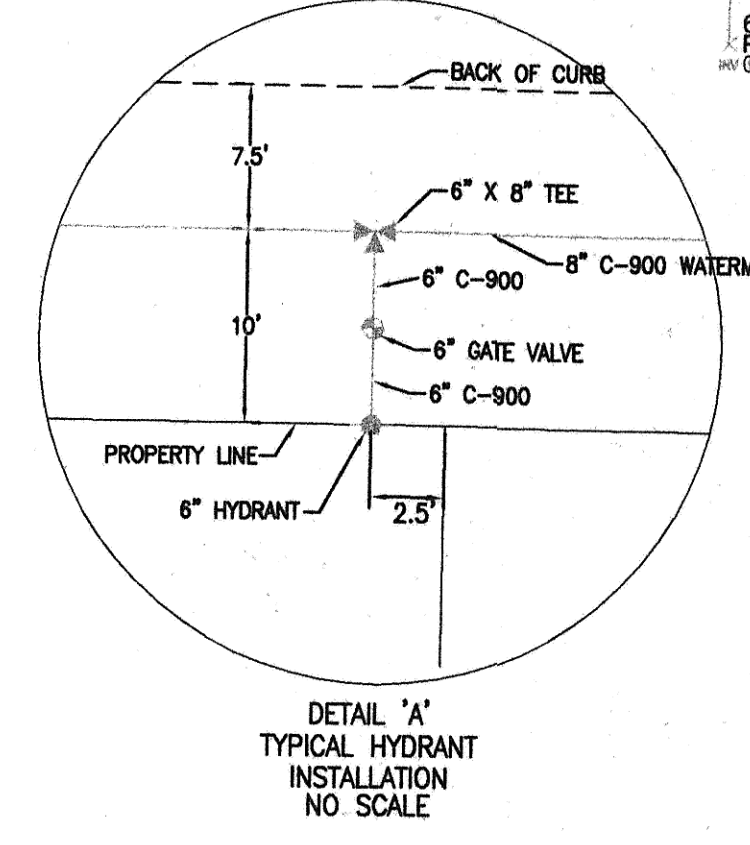
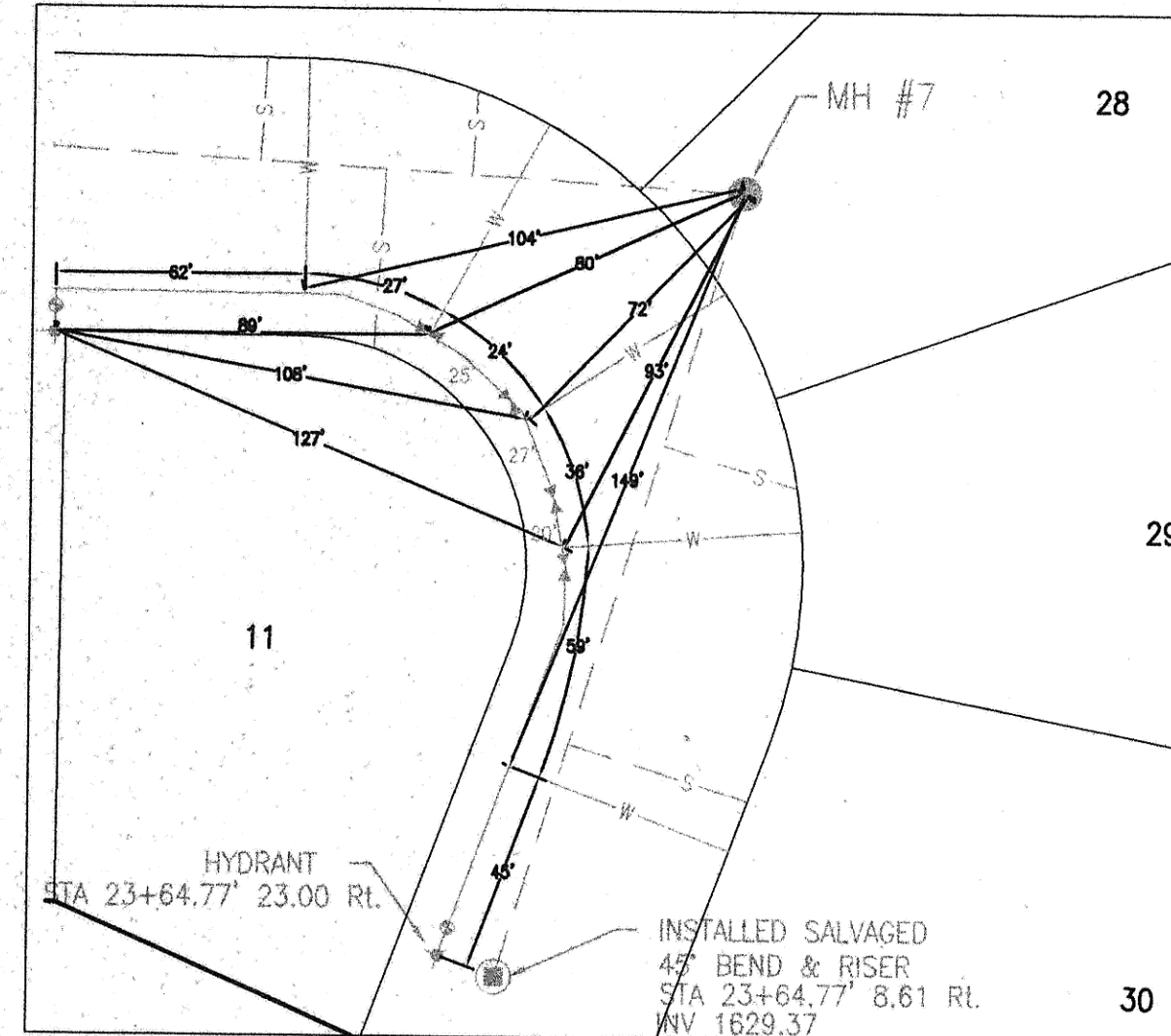


HARBOR TRAIL S.E. AS-BUILT WATER & SEWER PLANS

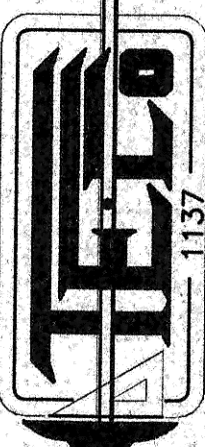
BORDEN HARBOR FIRST SUBDIVISION



- SYMBOL LEGEND**
- INSTALL WATER LINE CAP
 - ⊕ INSTALL GATE VALVE
 - INSTALL WATERMAIN
 - ⊕ INSTALL FIRE HYDRANT
 - ⊕ INSTALL TEE
 - ⊕ INSTALL SANITARY SEWER MANHOLE
 - INSTALL SANITARY SEWER LINE
 - ⊕ INSTALL CATCH BASIN
 - PROPOSED CURB & GUTTER
 - ⊕ EXISTING LIGHT POLE
 - ⊕ EXISTING POWER POLE
 - EXISTING OVERHEAD POWER LINE
 - ⊕ EXISTING MANHOLE
 - ⊕ EXISTING FIRE HYDRANT
 - ⊕ EXISTING CATCH BASIN
 - EXISTING 12" PVC STORM
 - EXISTING 8" RCP WATERMAIN
 - EXISTING 8" SANITARY SEWER
 - EXISTING 6" FORCE MAIN
 - ⊕ EXISTING 45° BEND & RISER
 - EXISTING CURB & CUTTER



TOMAN ENGINEERING COMPANY
CONSULTING CIVIL & ENVIRONMENTAL ENGINEERS
909 5th St. N.E. • WASHDC, NORTH DAKOTA 58501 • 701-462-2403



PROJECT: BORDEN HARBOR WATER & SEWER CITY PROJECT NO. 97-10 HARBOR TRAIL SE

NO.	DATE	BY	REVISIONS
1	7/97	CEC	RECORD DRAWINGS

TITLE: BORDEN HARBOR WATER & SEWER CITY PROJECT NO. 97-10
SHEET NUMBER 3
OF 4 SHEETS