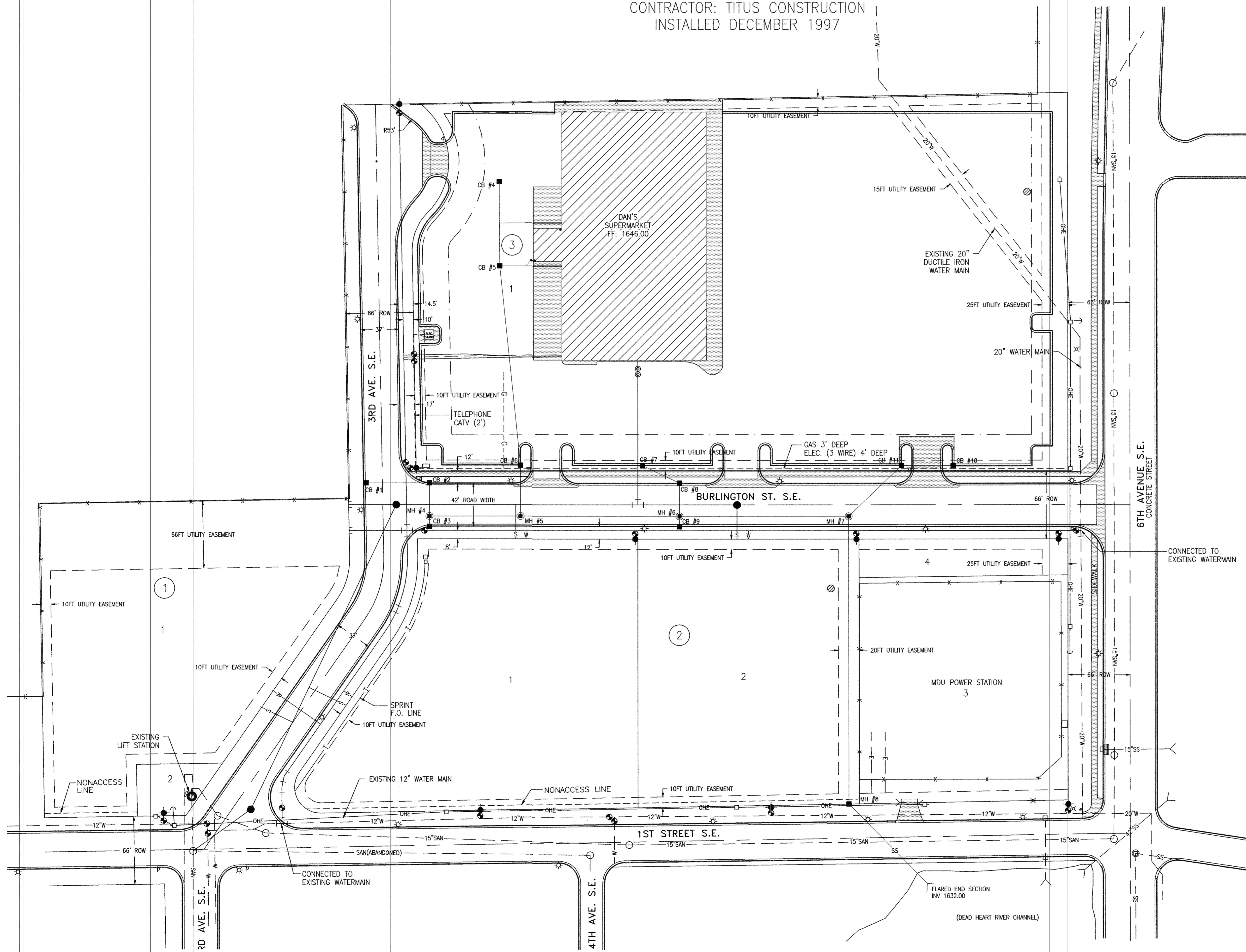


DAN'S SUPERMARKET STORM SEWER PLAN

CONTRACTOR: TITUS CONSTRUCTION
INSTALLED DECEMBER 1997

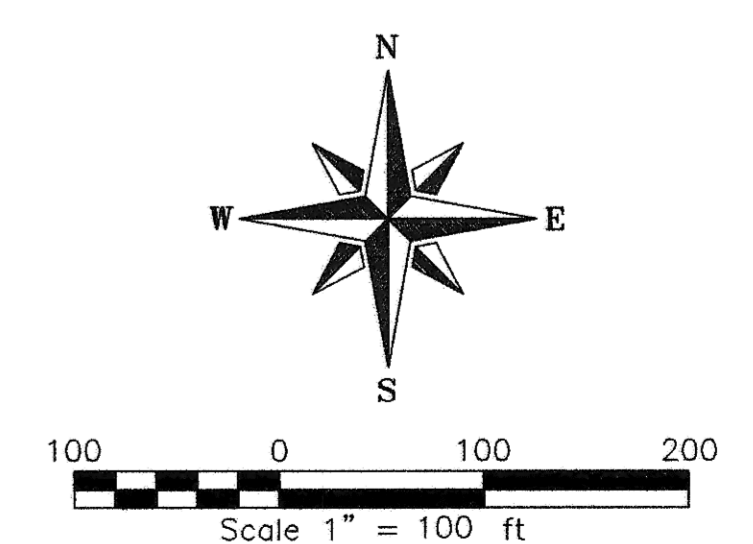


EXISTING FEATURES LEGEND

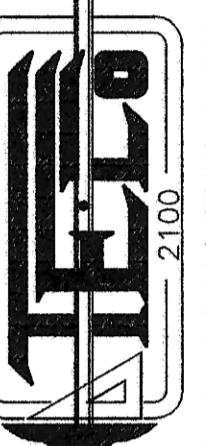
- ⊕ FIRE HYDRANT
- ⊙ GATE VALVE
- ⊗ CURB STOP
- ⊘ BEND
- ⊕ TEE
- ⊗ CROSS
- ⊘ REDUCER
- ⊙ SLEEVE
- ⊕ WATER GATE VALVE
- ⊙ SANITARY MANHOLE
- ⊙ CURB INLET
- ⊙ BEEHIVE CATCH BASIN
- ⊙ STORM MANHOLE
- ⊙ POWER POLE
- ⊙ STREET LIGHT
- ⊙ ELECTRICAL JUNCTION BOX
- ⊙ TELEPHONE PEDESTAL
- ⊙ MONITOR WELL
- W — WATER MAIN
- SS — SANITARY SEWER MAIN
- S — STORM SEWER MAIN
- E — UNDERGROUND ELECTRIC
- T — UNDERGROUND TELEPHONE
- G — GAS LINE
- C — CURB & GUTTER (CONCRETE)
- X — FENCE
- [] — SIDEWALK OR DRIVEWAY (CONCRETE)
- 4 — SIGN/POST
- ⊕ — GUY WIRE & ANCHOR
- C — CULVERT
- OHE — OVERHEAD POWERLINE

PROPOSED FEATURES LEGEND

- ⊕ FIRE HYDRANT
- ⊙ GATE VALVE
- ⊕ WATER MAIN TEE
- ⊙ SANITARY MANHOLE
- ⊙ PLUG
- ⊙ CATCH BASIN
- ⊙ STORM MANHOLE
- ⊙ SANITARY SERVICE
- ⊙ WATER SERVICE



TOMAN ENGINEERING COMPANY
CONSULTING CIVIL & ENVIRONMENTAL ENGINEERS
902 2ND ST. N.W. • WASHINGTON, NORTH CAROLINA 27601 • 703-443-1448



DAN'S SUPERMARKET
GRADING PLAN &
STORM SEWER PLANS

PROJECT:

BY	DATE	REVISIONS
AR	2/7/99	AS-BUILT DRAWINGS
AR	10/7/97	

TITLE: DAN'S SUPERMARKET

SHEET NUMBER
1
OF 4 SHEETS