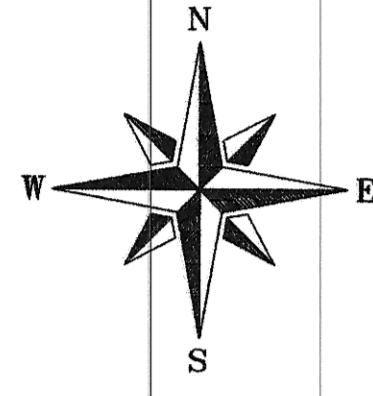
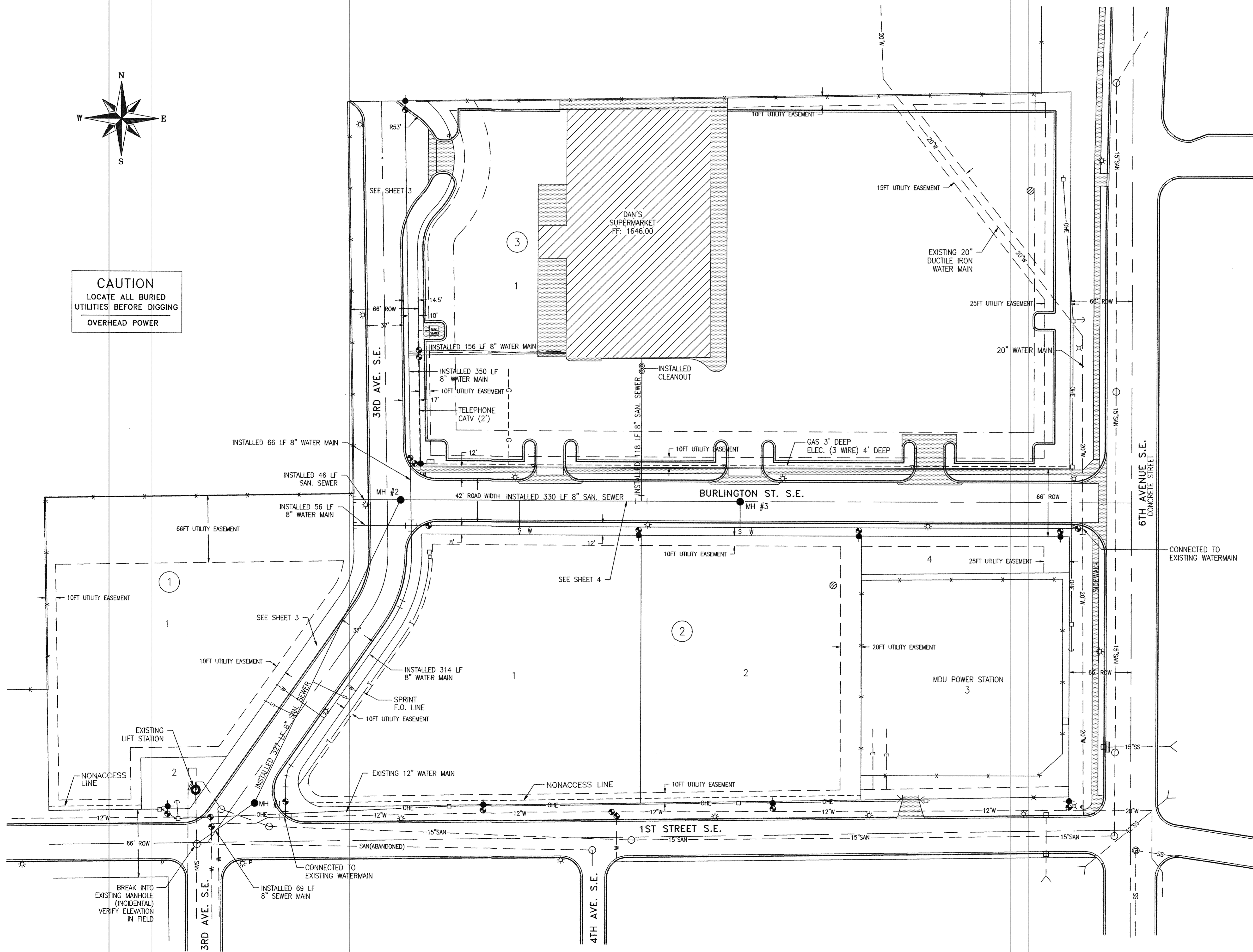


DAN'S SUPERMARKET PROJECT LAYOUT



CAUTION
LOCATE ALL BURIED
UTILITIES BEFORE DIGGING
OVERHEAD POWER



EXISTING FEATURES LEGEND

- ⊕ FIRE HYDRANT
- ⊙ GATE VALVE
- ⊗ CURB STOP
- ⊗ BEND
- ⊗ TEE
- ⊗ CROSS
- ⊗ REDUCER
- ⊗ SLEEVE
- ⊗ WATER GATE VALVE
- ⊗ SANITARY MANHOLE
- ⊗ CURB INLET
- ⊗ BEEHIVE CATCH BASIN
- ⊗ STORM MANHOLE
- ⊗ POWER POLE
- ⊗ STREET LIGHT
- ⊗ ELECTRICAL JUNCTION BOX
- ⊗ TELEPHONE PEDESTAL
- ⊗ MONITOR WELL
- W — WATER MAIN
- SS — SANITARY SEWER MAIN
- S — STORM SEWER MAIN
- E — UNDERGROUND ELECTRIC
- T — UNDERGROUND TELEPHONE
- G — GAS LINE
- C & G — CURB & GUTTER (CONCRETE)
- X — FENCE
- S — SIDEWALK OR DRIVEWAY (CONCRETE)
- ⊕ SIGN/POST
- ⊕ GUY WIRE & ANCHOR
- ⊕ CULVERT
- OHE — OVERHEAD POWERLINE

PROPOSED FEATURES LEGEND

- ⊕ FIRE HYDRANT
- ⊙ GATE VALVE
- ⊗ WATER MAIN TEE
- ⊗ SANITARY MANHOLE
- ⊗ PLUG
- ⊗ CATCH BASIN
- ⊗ STORM MANHOLE
- ⊗ SANITARY SERVICE
- ⊗ WATER SERVICE



TOMAN ENGINEERING COMPANY
CONSULTING CIVIL & ENVIRONMENTAL ENGINEERS
906 2ND ST. N.W. *MANDAN, NORTH DAKOTA 58554
(701) 663-6483

DAN'S SUPERMARKET
PROJECT LAYOUT

PROJECT:

NO.	REVISIONS	DATE	BY	DATE	ISSUE NO.	DATE
1	AS-BUILT DRAWINGS	2/99	AR	8/19/97	97-17	8/19/97

SHEET NUMBER

2
OF 5 SHEETS